



**District
Mission:**

**To ignite a
passion for
learning.**

**Board
Priorities:**

Ensure all students stay on or above grade level each year and graduate prepared to successfully implement a plan for college or career.

Every day, we are college or career ready.

Provide all students with engaging learning opportunities.

Rigor and engagement are everywhere.

Create a space that is safe, inclusive and welcoming for all.

Diversity and culture make us better.

Plan and execute the capital and human capital investments that will make our district better.

We plan for the future.

Lake County School District Board of Education
March 26, 2019 5:00 pm Special Meeting
Location: Lake County District Office, 328 West 5th Street-Room 11

1. 5:00 Call to order
2. 5:01 Pledge of Allegiance
3. 5:02 Roll Call
4. 5:03 Preview Agenda
5. 5:04 Public Participation

Members of the public who wish to address the board on non-agenda items are welcome to do so at this time. Please sign up on the clipboard at the front. We ask you to please observe the following guidelines:

- Confine your comments to matters that are germane to the business of the School District.
- Recognize that students often attend or view our meetings. Speaker's remarks, therefore, should be suitable for an audience that includes kindergarten through twelfth grade students.
- Understand that the board cannot discuss specific personnel matters or specific students in a public forum.

6. 5:10 Action Item
 - a. Calendar Committee Recommendation
 - b. Second Reading and Adoption of Policies GP-7 and SP-4C-3
7. 5:30 Bond Finances-Dan O'Connell
8. 8:00 Agenda planning:
 - a. Oversight Calendar: WPE update
 - b. Health & Wellness Update
 - c. Policy Review GP-10 through GP-14 and BRS-1 through BRS-5E
9. Informational Items
 - a. LCSD Budget Reports
10. Next Meeting:
 - a. March 28, 2019 Walk Through @ LCIS 8:15 am
 - b. April 9, 2019 Regular Meeting 7:00 pm @ District Office
 - c. April 23, 2019 Work Session 6:30 pm @ District Office
 - d. May 14, 2019 Regular Meeting 7:00 pm @ District Office
 - e. May 23, 2019 Members may attend Class Day @ High School 1:00 pm
 - f. May 25, 2019 Members may attend Graduation @ High School 10:00 am
 - g. May 28, 2019 Work Session 6:30 pm @ District Office

Estimated duration of meeting is 2.5 to 3 hours **Updated 3/18/2019

A few welcoming notes:

The board's meeting time is dedicated to its strategic mission and top priorities. • The "consent agenda" has items which have either been discussed prior or are highly routine. By not discussing these issues, we are able to spend time on our most important priorities. • "Public participation" is an opportunity to present brief comments or pose questions to the board for consideration or follow-up. Each person is asked to focus comments to five minutes. The boundaries are designed to help keep the strategic meeting focused and in no way limits conversations beyond the board meeting. • Your insights are needed and welcomed and the board encourages you to request a meeting with any board member, should you have something to discuss. • If you are interested in helping the district's achievement effort, please talk with any member of the leadership team or call the district office at 719-486-6800. Opportunities abound. Your participation is highly desired.

Follow Up to Board of Education from the Calendar Committee & Staff Recommendations 3-12-2019

The following information is provided as additional background to respond to Board of Education questions and comments about the calendar committee and staff recommendations presented 3-12-2019.

The Board of Education engaged in a “Stars and Steps” exercise to respond to the recommendations. The following ideas were shared:

Stars – things we like about the recommendations

- *Slow implementation and a respectful process to our stakeholders*
- *The committee presenting a solution that can use the calendar to support academics*
- *The timeline for the work to take place during 2019-20*
- *The recommendation will allow the committee to complete their work now, which respects their time*
- *It is a brave recommendation*
- *It is an innovative recommendation*
- *It is aligned with our core values*
- *It is in the best interest of students, first and foremost*
- *It is respectful of student voice*
- *The district is being responsive to the recommendation of the committee*
- *It is a structure that expands the time available to support student academic growth and enrichment*

Steps – questions we have or areas where we would like to see additional effort applied (includes staff responses to each)

- *Can you articulate why you think we need to wait a year to implement the four-day calendar?*

The one-year delay that the committee is recommending is a recognition of two things we learned during the stakeholder input process: (1) our stakeholders indicated that, while many of them are open to a four-day schedule or even excited about it, not all of them are ready for this change; and (2) many parents, in particular, are concerned about Friday childcare options. Even though the total number of school days in Calendar B does not change from the current calendar (164 days), the change in distribution of the days--with Fridays off--is viewed by some as disruptive and challenging, at least without a promise of Friday programming. This is understandable.

We believe a year delay in implementation will both give our stakeholders time to learn about and adjust to a coming calendar change, and also give the district and its partners time to create and fund Friday programs. The creation of high-quality Friday programs, and a design process that allows for stakeholder input about what students and families want to see on Fridays, will take time. Our partners also need time to prepare for this change if we hope that they will come alongside us to offer programs. Finally, waiting one year also allows time to seek new and outside funding to support Friday programs. If such funding can be secured by 2020, it will reduce the amount of district reserve funding required to support these programs (see below).

- *Why didn't the committee recommend Calendar A?*

While Calendar A received slightly more support than Calendar B overall in our final survey (Phase III), Calendar B received more support in our community focus groups (Phase II). Calendar B also received more support than Calendar A in our final survey (Phase III) among students and staff. As a committee, we share a vision for a calendar that can better support students, educators, families and ultimately the community as a whole. The vast majority of our committee believes that Calendar B will ultimately better serve student and staff outcomes, because it mitigates summer learning loss by shortening the summer break; provides great consistency; provides opportunities to extend learning for students on the “5th day;” will likely allow for greater teacher recruitment and retention; and because it will result in better pacing for students and staff. In this sense, it was less that the

committee did *not* recommend Calendar A, and more that it felt strongly about a positive recommendation *for* Calendar B.

- *The option recommended by the committee (to adopt the current calendar for one year, then to adopt Calendar B) was not an option presented to our stakeholders. It feels like a new option.*

It is true that when we presented the options to stakeholders we envisioned the implementation of a new calendar in 2019-20. However, we learned through all of our stakeholder interaction that this timeline was ultimately too aggressive if we truly wanted to bring our community along with us in this decision. We therefore chose to recommend a slower implementation, which was an organic option that arose out of the stakeholder input process. So, it is true that the timeline presented is new, and we will have to explain this to the community in our communication. What is steadfast and unchanged is the calendar that is ultimately being recommended. We are recommending Calendar B be implemented in 2020-21 and beyond as designed and as presented to stakeholders. We have no intention of surprising stakeholders with a new calendar model; we rather only hope to slow the process down to support a successful implementation. We will be sure to be clear about this evolution in our final communication.

In addition to the timeline change, the other thing about this recommendation that feels “new” is sticking with our current calendar for the intervening year. For the 2019-20 school year, the committee had extensive discussion about whether the district should adopt Calendar A for one year, or simply keep our current calendar. In the end, the committee recommended keeping the current calendar for one more year for a few reasons:

First, the current calendar has 42% four-day school weeks, whereas Calendar A has mostly five-day school weeks. It seemed inconsistent to swing from almost half four-day weeks (2018-19), to mostly five-day weeks (2019-20), and then back to all four-day weeks with Calendar B in 2020-21. Keeping our current calendar for one more year also allows us to pilot new models for our Friday or “5th day” programming that will be a part of the Calendar B implementation.

Second, the current calendar has a one-week spring break in March, as does Calendar B. Calendar A has a February and an April break. It likewise did not seem to make sense to ask our community to change the spring break pattern for one year only.

Finally, in our initial Phase I survey, nearly 90% of respondents rated our current calendar as a 3 or higher on a 5-point scale. This led us to conclude that there was not significant unhappiness with the current calendar, and that while in the long term it can be improved, keeping it for one more year would be logical.

- *We said that a new calendar would be budget neutral, but staff is now recommending the support of Friday programs, if necessary, from the district’s reserves. That’s not budget neutral. Why the change?*

Budget neutrality was a guiding principle of the calendar process. This came from two directions: First, many districts have tried to use the calendar to actually save money in their operating budgets. They have traditionally done so by reducing hours and pay for hourly employees such as bus drivers and cooks. We were not willing to do this. So we did not seek to reduce our operating expenses through the calendar. Second, we were clear and remain clear that a new calendar should not take operating funds from other district priorities such as raising staff salaries. This would seem to defeat the purpose of moving our overall work forward, as it would simply “rob Peter to pay Paul.” So we did not seek to increase our operating expenses through the calendar, either.

The staff recommendation regarding providing backfill funding for Friday programs for four years (1 planning year and 3 years of implementation) is not technically budget neutral as it *does* recommend the commitment of district funds. However, it is neutral to the operating budget as it recommends setting aside unrestricted reserve funds (rather than operating funds) for this purpose and for a finite period of time.

Again, like the timeline issue addressed above, the need we perceive to commit to Friday programs was an organic option that arose out of the stakeholder input process. Once we heard and experienced parent anxiety about Fridays, and once we realized the missed opportunity for academics and enrichment by not committing to Friday programs, the committee pivoted to the solution presented. As staff, it is incumbent upon us to be sure that the district can live up to its commitments financially, which is where the recommendation to allocate funds from the unrestricted reserve came from. We will be sure to be clear about this evolution in our final communication.

- *We have some input for the development of Friday programs. Specifically:*
 - *We'd like to see these programs be responsive to the desires of the whole community.*
 - *We'd like to see these programs used as a lever to pursue new opportunities that we don't currently provide.*
 - *We'd like to be sure that Friday programs balance opportunity with rest and pacing. We don't want to see Fridays take away from the chance for students and staff to rest and recover each week. We also want them to be used strategically to enhance our overall program and support of students.*

Thank you for this input and we will be sure to incorporate it into the program design process!

Finally, the Board asked for some detail about the operating reserve commitment we think might be required over the next four years to support Friday programs, and why we think that is a reasonable commitment.

We have developed a draft budget for what we would consider robust Friday programs for the four-year period (1 planning year, 3 implementation years). These programs would serve many students at West Park and LCIS, in particular, where we think the demand will be the highest. Our budget takes into account grant funding we are conservatively confident in being able to apply to this effort, such as GOL! and 21st Century. It also assumes that we reallocate funds we currently spend on summer school to Friday programs, and that we collect a minimal amount of tuition from a "sliding scale" tuition program for part of the day that would always have a free or no-cost option. The expenditures that would not be covered by existing or anticipated funding sources are therefore roughly as follows:

Planning Year	\$28,309
Year 1	\$138,499
Year 2	\$138,499
Year 3	\$138,499
	\$443,806

I would therefore suggest that the board should consider a total investment of \$425,000-450,000 from the district's unrestricted reserves as a maximum needed over the next four years. The district's unrestricted reserves currently total \$2,792,520 (\$2,567,529 in the operating reserve and \$225,000 in the insurance reserve), meaning that a \$450,000 investment would be 16% of the total or 17.5% of just the operating reserve, assuming the reserves stay static. If outside new funds are secured to support Friday programs, the district's investment potential will go down commensurately.

We have been building our reserves strategically using one-time funds for several years, primarily to support capital projects. Recently, some new grant programs have been made available, and we have leveraged them to secure funding to address capital projects that otherwise would have relied on transfers from the reserves. For instance, we secured a \$497,000 safety and security disbursement grant for several safety projects that otherwise would have relied on reserve funding at least in part. This has taken some of the pressure off of anticipated usage of the reserves.

We also anticipate that we may once again receive one-time small rural funds for FY20. These have been set aside on an annual basis by the legislature to support small rural districts with one-time expenses. We typically receive \$350,000 or so. If we receive these funds again, they will likewise go back into our reserves, increasing them from the amount shown above.

For all of the reasons described, we believe that the proposal to backstop funding for Friday programs in this time-bound manner is both reasonable financially. It also provides a potential lever to improve student outcomes, meaning that it is an investment that is in line with the Board's goals and core values. Finally, much of this investment will actually translate directly back into income potential for LCSD employees who wish to work on some or all Fridays. In this way, it is actually contributing to improved outcomes for staff as well as students.

If the Board supports this proposal, the mechanism would be a use of beginning fund balance resolution. I would like to discuss the mechanics of this at the Board's March 26 meeting.

Policy Type: Governance Process

Agenda Planning

To accomplish its stated objectives, the Board will follow an annual agenda which includes continuing review, monitoring and refinement of *Strategic Policies* and continually improves board performance through board education and enriched input and deliberation.

Accordingly:

1. The monthly planning of the agenda will be developed by the Board President and Superintendent. This agenda will be based on the Oversight Calendar, Workshop Calendar and On-boarding Calendar, all of which can be found in policies SP4-C1-3.
2. Agenda planning will include:
 - a. Monitoring of district performance in accordance with the Strategic Plan and Oversight Calendar.
 - b. Consultations with selected groups and persons that will be determined and arranged by the Superintendent and the Board President with input from the Board.
 - c. Governance education, including orientation of new Board members in the Board's governance process and periodic Board discussion of process improvement.
 - d. Education related to *Strategic Policies* (e.g. presentations by futurists, demographers, advocacy groups, staff, etc.).
3. Throughout the year the Board will attend to consent agenda items as expeditiously as possible. An item may be removed from the consent agenda only upon approval of a majority of the Board.

Monitoring of *Governance Process*, *Board-Superintendent Relationship* and *Staff/Superintendent Guidelines* policies will be included on the agenda four times a year for review and discussion.

Policy Type: Strategic Policies

On Boarding Road Map Calendar

Month/Year	Activity	Who facilitates	
November 2019	Election	The Public	
	At meeting, welcome	Board president	
December 2019	Board basic orientation	Board president	Include acronyms; quick start guide.
	Roles	Board president	
January 2020	At work session, red line scenarios	Board president	
February 2020	At work session, constituent service	Katie Baldassar	
March 2020	At work session, legal training	Caplan and Ernst	
April 2020	At work session, financial	Keith Moffet	
May 2020	At work session, discussion of unwritten expectations	Board president	
June 2020	Board retreat		

Month/Year	Activity	Who facilitates	
September 2020	CASB fall gathering		
December 2020	CASB winter gathering		
January 2021	School finance workshop	CASB	

Lake County School District

BEST update and tax analysis

March 11, 2019



RBC Capital Markets

STRICTLY PRIVATE AND CONFIDENTIAL

BEST Update

- BEST funds projects from two different sources- Cash grants and lease purchase grants.

- Cash projects tend to be smaller (less than \$10 million) and harder to collateralize
 - Recently, cash grants have totaled \$60-\$75 M per year.
 - If the district receives a cash grant they issue their own bonds for the match
 - District can choose structure of bonds and retain any premium

- Lease purchase projects are often new facilities and easier to collateralize
 - If the district receives a cash grant the district sells bonds directly to the State and the State issues COPS on their behalf
 - District must issue a level structure and no premium is generated
 - Series 2012 BEST match was “Lease Purchase”

 - BEST is nearing its capacity for lease purchase grants
 - Current capacity will only allow for \$80 million in additional lease purchase projects

 - 2019 proposed Legislation would allow for an additional capacity of approximately \$170 million in lease purchase projects

Tax Impact and BEST Update

- As of January 1, 2019, the District has \$8,651,156 of outstanding bonds
 - Only remaining bond issue is a BEST matching money bond from 2012 bond election
 - District’s Net Debt Capacity equals \$30.6 million

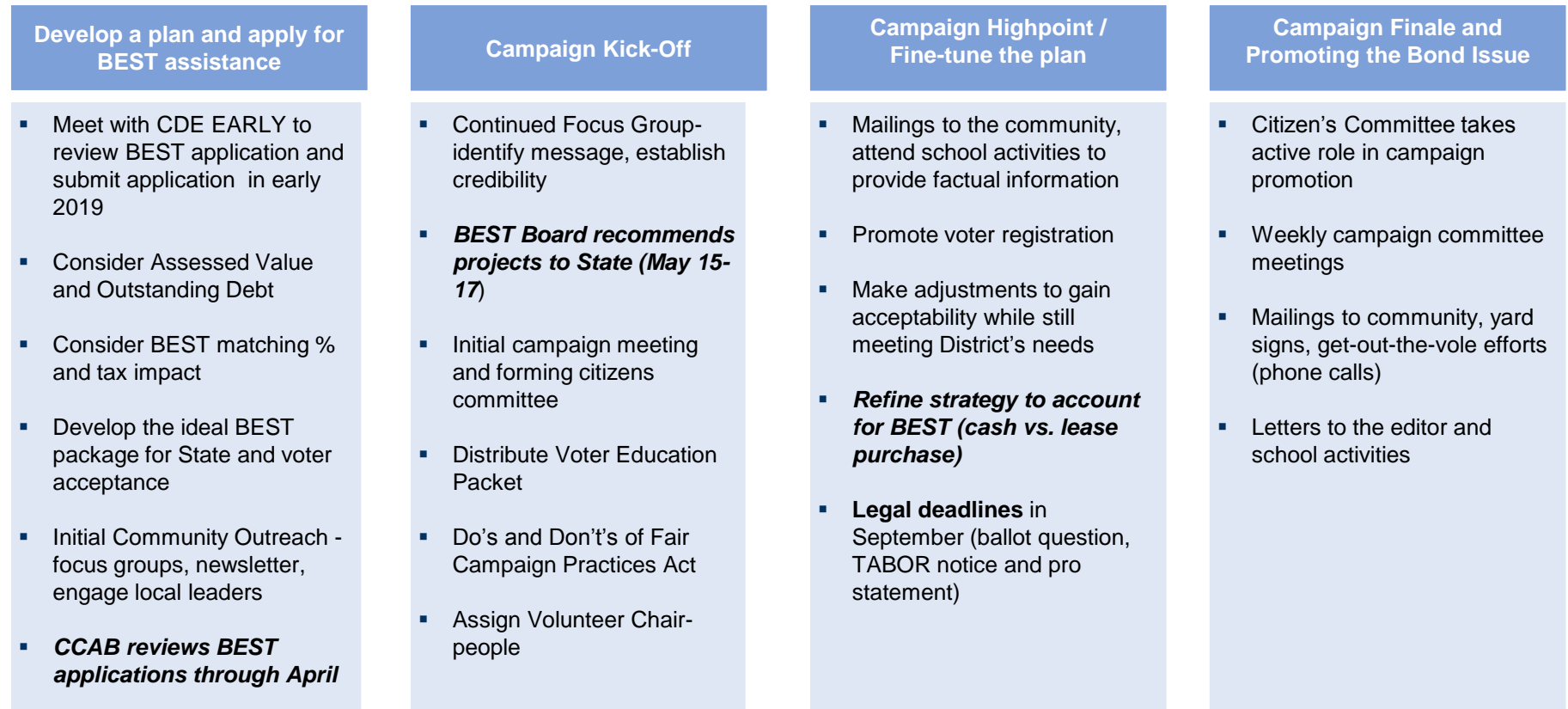
- As of January 1, 2019, the District has \$667,000 Mill levy override dollars
 - District’s remaining override capacity equals \$2.18 million
 - The District’s Current BEST match is 48%
 - A \$35 million project would require a \$16.8 million BEST match

Sample Tax impact Scenario					
Project Amount	Debt Service	\$100,000 of Home Market Value Assessed at	Mills	Cost/Yr.	Cost/Mo.
\$16,800,000	\$1,200,000	\$7,200	6.11	\$44.02	\$3.67
Mill Levy Override	\$1,000,000	\$7,200	5.10	\$36.69	\$3.06
Commercial					
Project Amount	Debt Service	\$100,000 of Commercial Market Value Assessed at	Mills	Cost/Yr.	Cost/Mo.
\$16,800,000	\$1,200,000	\$29,000	6.11	\$177.32	\$14.78
Mill levy Override	\$1,000,000	\$29,000	5.10	\$147.77	\$12.31

- Other considerations- ½ of districts assessed value is Climax mine, Districts likelihood of receiving another large lease purchase grant

An Integrated Approach Incorporating BEST

RBCCM will provide hands-on assistance to the Campaign Committee throughout this process



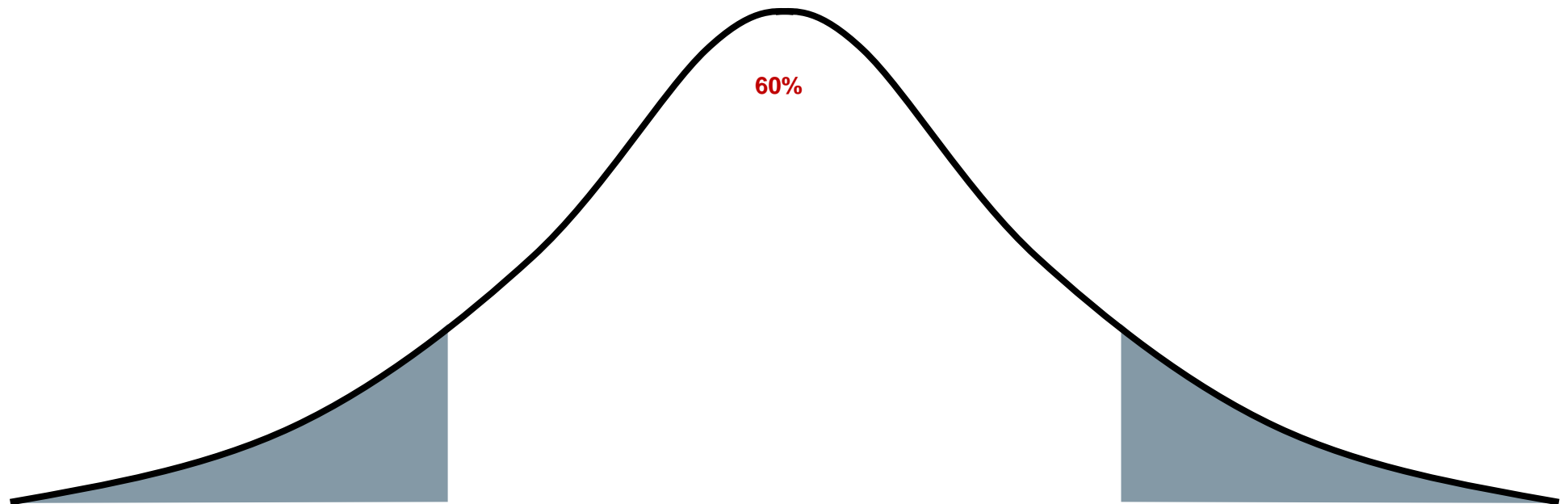
General Overview of 2019 vs. 2020 Voter Dynamics

2019 Off-Year Election

- Lower voter participation
- Generally, less “schools-friendly” demographic
 - Older, home-owning republican types, and more likely to be tax sensitive
- Easier to target and influence your smaller voter base
 - Requires motivated volunteers
- No state-wide issues, less “clutter”

2020 Presidential-Year Election

- Higher voter participation
- More “schools-friendly” demographic profile.
 - Younger voters, more likely to have school-age children, and less likely to be highly tax sensitive
- Must be grass roots campaign, with more financial resources to “cut through” the clutter
- Targeting “friendlier” voters doesn’t change, but hope higher turnout does most of the work
- Must compete with “clutter” of all types



Disclaimers of RBC Capital Markets

RBC Capital Markets, LLC (“RBCCM”), seeks to serve as an underwriter on a future transaction and not as a financial advisor or municipal advisor. The information provided is for discussion purposes only in anticipation of being engaged to serve as an underwriter. The primary role of an underwriter is to purchase securities with a view to distribution in an arm’s-length commercial transaction with the issuer. The underwriter has financial and other interests that differ from those of the Issuer. RBCCM is not recommending an action to you as the municipal entity or obligated person. RBCCM is not acting as an advisor to you and does not owe a fiduciary duty pursuant to Section 15B of the Exchange Act to you with respect to the information and material contained in this communication. RBCCM is acting for its own interests. You should discuss any information and material contained in this communication with any and all internal or external advisors and experts that you deem appropriate before acting on this information or material.

Disclaimer:

This presentation was prepared exclusively for the benefit of and internal use by the recipient for the purpose of considering the transaction or transactions contemplated herein. This presentation is confidential and proprietary to RBC Capital Markets, LLC (“RBCCM”) and may not be disclosed, reproduced, distributed or used for any other purpose by the recipient without RBCCM’s express written consent.

By acceptance of these materials, and notwithstanding any other express or implied agreement, arrangement, or understanding to the contrary, RBCCM, its affiliates and the recipient agree that the recipient (and its employees, representatives, and other agents) may disclose to any and all persons, without limitation of any kind from the commencement of discussions, the tax treatment, structure or strategy of the transaction and any fact that may be relevant to understanding such treatment, structure or strategy, and all materials of any kind (including opinions or other tax analyses) that are provided to the recipient relating to such tax treatment, structure, or strategy.

The information and any analyses contained in this presentation are taken from, or based upon, information obtained from the recipient or from publicly available sources, the completeness and accuracy of which has not been independently verified, and cannot be assured by RBCCM. The information and any analyses in these materials reflect prevailing conditions and RBCCM’s views as of this date, all of which are subject to change.

To the extent projections and financial analyses are set forth herein, they may be based on estimated financial performance prepared by or in consultation with the recipient and are intended only to suggest reasonable ranges of results. The printed presentation is incomplete without reference to the oral presentation or other written materials that supplement it.

IRS Circular 230 Disclosure: RBCCM and its affiliates do not provide tax advice and nothing contained herein should be construed as tax advice. Any discussion of U.S. tax matters contained herein (including any attachments) (i) was not intended or written to be used, and cannot be used, by you for the purpose of avoiding tax penalties; and (ii) was written in connection with the promotion or marketing of the matters addressed herein. Accordingly, you should seek advice based upon your particular circumstances from an independent tax advisor.

ACCOUNT REFERENCE SHEET BY OBJECT

01's	All salaries
02's	Health, dental, life, vision insurances, PERA and Medicare benefits
03's	Legal, audit and consulting services
04's	Disposal, snow removal and repairs and maintenance services
05's	Student transportation, all insurances, telephone, postage, advertising, printing and binding, tuition, and travel and registration
06's	General supplies, natural gas and heating expenses, fuel, food, books and periodicals
07's	Equipment
08's	Dues and fees, interest and indirect costs, reserves
52-58	Transfers, allocations and leases

For 02/01/19 - 02/28/19

Expenditure Summary Report

FJEXS01A

Periods 08 - 08

MONTHLY BUDGET STATUS REPORT

BUDGET STATUS(Copy)

Account No/Description	Adjusted Budget	Y-T-D Encumb	Period Expended	Y-T-D Expended	Available Balance	Percent Used
10 GENERAL FUND						
01 SALARIES	5,514,603.00	.00	476,483.08	3,659,315.14	1,855,287.86	66.36
02 BENEFITS	2,202,621.00	.00	176,820.79	1,369,644.71	832,976.29	62.18
03 PROF/TECH SERVICES	727,230.00	7,704.00	102,774.29	497,123.81	222,402.19	69.42
04 PURCHASED SERVICES	140,129.00	.00	16,860.78	81,565.81	58,563.19	58.21
05 OTHER SERVICES	863,502.00	.00	-3,892.12	436,031.83	427,470.17	50.50
06 SUPPLIES	688,958.00	12,160.19	64,870.49	484,059.79	192,738.02	72.02
07 EQUIPMENT	29,100.00	.00	364.41	7,472.07	21,627.93	25.68
08 OTHER OBJECTS	2,951,679.00	.00	1,457.58	19,352.80	2,932,326.20	.66
52	175,000.00	.00	36,592.00	130,342.00	44,658.00	74.48
58	319,104.00	.00	26,592.00	209,637.92	109,466.08	65.70
10 GENERAL FUND	13,611,926.00	19,864.19	898,923.30	6,894,545.88	6,697,515.93	50.80
19 COLO. PRESCHOOL PROGRAM						
01 SALARIES	185,750.00	.00	15,441.70	134,717.17	51,032.83	72.53
02 BENEFITS	90,370.00	.00	6,664.52	61,064.64	29,305.36	67.57
04 PURCHASED SERVICES	6,000.00	.00	904.20	3,664.45	2,335.55	61.07
05 OTHER SERVICES	2,229.00	.00	.00	134.02	2,094.98	6.01
06 SUPPLIES	49,169.00	186.78	5,733.43	52,081.96	-3,099.74	106.30
08 OTHER OBJECTS	45,114.00	.00	.00	.00	45,114.00	.00
19 COLO. PRESCHOOL PROGRAM	378,632.00	186.78	28,743.85	251,662.24	126,782.98	66.52
21 FOOD SERVICE FUND						
01 SALARIES	291,200.00	.00	26,413.66	176,517.78	114,682.22	60.62
02 BENEFITS	114,145.00	.00	11,836.44	77,731.71	36,413.29	68.10
05 OTHER SERVICES	2,500.00	.00	132.77	778.02	1,721.98	31.12
06 SUPPLIES	329,500.00	.00	29,536.96	181,446.49	148,053.51	55.07
21 FOOD SERVICE FUND	737,345.00	.00	67,919.83	436,474.00	300,871.00	59.20
22 DESIGNATED PURPOSE GRANTS						
01 SALARIES	1,371,498.00	.00	75,414.92	628,043.94	743,454.06	45.79
02 BENEFITS	523,663.00	.00	24,672.30	204,102.75	319,560.25	38.98
03 PROF/TECH SERVICES	484,897.00	2,385.00	45,131.80	220,278.35	262,233.65	45.92
05 OTHER SERVICES	198,499.00	.00	1,753.79	36,375.96	162,123.04	18.33
06 SUPPLIES	168,868.00	934.34	25,092.39	56,967.93	110,965.73	34.29
07 EQUIPMENT	.00	.00	.00	.00	.00	.00
08 OTHER OBJECTS	4,283.00	.00	.00	.00	4,283.00	.00
22 DESIGNATED PURPOSE GRANTS	2,751,708.00	3,319.34	172,065.20	1,145,768.93	1,602,619.73	41.76
26 THE CENTER - CHILD CARE						
01 SALARIES	93,560.00	.00	6,757.16	58,422.23	35,137.77	62.44
02 BENEFITS	33,262.00	.00	2,524.41	22,846.88	10,415.12	68.69
03 PROF/TECH SERVICES	2,500.00	.00	705.75	4,234.50	-1,734.50	169.38
06 SUPPLIES	15,138.00	32.42	9,194.54	10,343.58	4,762.00	68.54
08 OTHER OBJECTS	22,221.00	.00	414.72	3,071.08	19,149.92	13.82
26 THE CENTER - CHILD CARE	166,681.00	32.42	19,596.58	98,918.27	67,730.31	59.37

For 02/01/19 - 02/28/19

Expenditure Summary Report

FJEXS01A

Periods 08 - 08

MONTHLY BUDGET STATUS REPORT

BUDGET STATUS(Copy)

<u>Account No/Description</u>	<u>Adjusted Budget</u>	<u>Y-T-D Encumb</u>	<u>Period Expended</u>	<u>Y-T-D Expended</u>	<u>Available Balance</u>	<u>Percent Used</u>
27 HEAD START PROGRAM						
01 SALARIES	402,445.00	.00	36,627.70	300,194.23	102,250.77	74.59
02 BENEFITS	149,260.00	.00	13,946.07	113,307.01	35,952.99	75.91
03 PROF/TECH SERVICES	27,440.00	.00	5,569.24	19,810.19	7,629.81	72.19
05 OTHER SERVICES	5,365.00	.00	967.68	3,484.80	1,880.20	64.95
06 SUPPLIES	16,285.00	539.33	8,557.63	20,407.66	-4,661.99	128.63
07 EQUIPMENT	20,000.00	20,000.00	.00	.00	.00	100.00
08 OTHER OBJECTS	233.00	.00	.00	40.00	193.00	17.17
27 HEAD START PROGRAM	621,028.00	20,539.33	65,668.32	457,243.89	143,244.78	76.93
31 BOND REDEMPTION FUND						
08 OTHER OBJECTS	1,533,628.00	.00	.00	137,407.19	1,396,220.81	8.96
09 OTHER USES OF FUNDS	491,349.00	.00	.00	491,349.00	.00	100.00
31 BOND REDEMPTION FUND	2,024,977.00	.00	.00	628,756.19	1,396,220.81	31.05
43 CAPITAL PROJECTS FUND						
07 EQUIPMENT	379,500.00	11,860.95	10,031.14	269,950.58	97,688.47	74.26
08 OTHER OBJECTS	323,334.00	.00	.00	.00	323,334.00	.00
43 CAPITAL PROJECTS FUND	702,834.00	11,860.95	10,031.14	269,950.58	421,022.47	40.10

FINANCIAL REPORT AS OF 2/28/19

GENERAL FUND

EXPENDITURES

REVENUE

			BUDGET	BUDGET				BUDGET	BUDGET
	BUDGET AMOUNT	YTD ACTIVITY	BALANCE	%		BUDGET AMOUNT	YTD ACTIVITY	BALANCE	%
Jul-2018	\$ 13,266,124.00	\$ 973,990.91	\$ 12,292,133.09	7.34%	Jul-2018	\$ 13,266,124.00	\$ 395,340.15	\$ 12,870,783.85	2.98%
Aug-2018	\$ 13,266,124.00	\$ 1,766,644.45	\$ 11,499,479.55	13.32%	Aug-2018	\$ 13,266,124.00	\$ 854,475.81	\$ 12,411,648.19	6.44%
Sept-2018	\$ 13,266,124.00	\$ 2,576,875.14	\$ 10,689,248.86	19.42%	Sept-2018	\$ 13,266,124.00	\$ 1,753,329.61	\$ 11,512,794.39	13.22%
Oct-2018	\$ 13,266,124.00	\$ 3,457,238.84	\$ 9,808,885.16	26.06%	Oct-2018	\$ 13,266,124.00	\$ 2,188,979.94	\$ 11,077,144.06	16.50%
Nov-2018	\$ 13,282,252.00	\$ 4,377,375.65	\$ 8,904,876.35	32.96%	Nov-2018	\$ 13,282,252.00	\$ 2,556,077.80	\$ 10,726,174.20	19.24%
Dec-2018	\$ 13,282,252.00	\$ 5,223,349.04	\$ 8,058,902.96	39.33%	Dec-2018	\$ 13,282,252.00	\$ 2,926,445.31	\$ 10,355,806.69	22.03%
Jan-2019	\$ 13,611,926.00	\$ 6,020,783.81	\$ 7,591,142.19	44.23%	Jan-2019	\$ 13,611,926.00	\$ 3,252,035.46	\$ 10,359,890.54	23.89%
Feb-2019	\$ 13,611,926.00	\$ 6,914,410.07	\$ 6,697,515.93	50.80%	Feb-2019	\$ 13,611,926.00	\$ 3,940,783.67	\$ 9,671,142.33	28.95%
Mar-2019			\$ -	#DIV/0!	Mar-2019		\$ -	\$ -	#DIV/0!
Apr-2019			\$ -	#DIV/0!	Apr-2019		\$ -	\$ -	#DIV/0!
May-2019			\$ -	#DIV/0!	May-2019		\$ -	\$ -	#DIV/0!
Jun-2019			\$ -	#DIV/0!	Jun-2019		\$ -	\$ -	#DIV/0!

CPP FUND

EXPENDITURES

REVENUE

			BUDGET	BUDGET				BUDGET	BUDGET
	BUDGET AMOUNT	YTD ACTIVITY	BALANCE	%		BUDGET AMOUNT	YTD ACTIVITY	BALANCE	%
Jul-2018	\$ 433,942.00	\$ 21,240.87	\$ 412,701.13	4.89%	Jul-2018	\$ 433,942.00	\$ 26,592.00	\$ 407,350.00	6.13%
Aug-2018	\$ 433,942.00	\$ 43,676.09	\$ 390,265.91	10.06%	Aug-2018	\$ 433,942.00	\$ 53,184.00	\$ 380,758.00	12.26%
Sept-2018	\$ 433,942.00	\$ 72,180.17	\$ 361,761.83	16.63%	Sept-2018	\$ 433,942.00	\$ 78,226.96	\$ 355,715.04	18.03%
Oct-2018	\$ 433,942.00	\$ 130,297.47	\$ 303,644.53	30.03%	Oct-2018	\$ 433,942.00	\$ 103,269.92	\$ 330,672.08	23.80%
Nov-2018	\$ 433,942.00	\$ 156,982.66	\$ 276,959.34	36.18%	Nov-2018	\$ 433,942.00	\$ 129,861.92	\$ 304,080.08	29.93%
Dec-2018	\$ 433,942.00	\$ 194,025.51	\$ 239,916.49	44.71%	Dec-2018	\$ 433,942.00	\$ 156,453.92	\$ 277,488.08	36.05%
Jan-2019	\$ 378,632.00	\$ 223,202.44	\$ 155,429.56	58.95%	Jan-2019	\$ 378,632.00	\$ 183,045.92	\$ 195,586.08	48.34%
Feb-2019	\$ 378,632.00	\$ 251,849.02	\$ 126,782.98	66.52%	Feb-2019	\$ 378,632.00	\$ 236,229.92	\$ 142,402.08	62.39%
Mar-2019			\$ -	#DIV/0!	Mar-2019		\$ -	\$ -	#DIV/0!
Apr-2019			\$ -	#DIV/0!	Apr-2019		\$ -	\$ -	#DIV/0!
May-2019			\$ -	#DIV/0!	May-2019		\$ -	\$ -	#DIV/0!
Jun-2019			\$ -	#DIV/0!	Jun-2019		\$ -	\$ -	#DIV/0!

FOOD SERVICE FUND

EXPENDITURES

REVENUE

			BUDGET	BUDGET				BUDGET	BUDGET
	BUDGET AMOUNT	YTD ACTIVITY	BALANCE	%		BUDGET AMOUNT	YTD ACTIVITY	BALANCE	%
Jul-2018	\$ 773,500.00	\$ 13,849.33	\$ 759,650.67	1.79%	Jul-2018	\$ 773,500.00	\$ 50,099.96	\$ 723,400.04	6.48%
Aug-2018	\$ 773,500.00	\$ 38,983.90	\$ 734,516.10	5.04%	Aug-2018	\$ 773,500.00	\$ 64,330.54	\$ 709,169.46	8.32%
Sept-2018	\$ 773,500.00	\$ 93,331.78	\$ 680,168.22	12.07%	Sept-2018	\$ 773,500.00	\$ 94,493.86	\$ 679,006.14	12.22%
Oct-2018	\$ 773,500.00	\$ 169,427.27	\$ 604,072.73	21.90%	Oct-2018	\$ 773,500.00	\$ 118,127.23	\$ 655,372.77	15.27%
Nov-2018	\$ 773,500.00	\$ 251,893.67	\$ 521,606.33	32.57%	Nov-2018	\$ 773,500.00	\$ 200,929.03	\$ 572,570.97	25.98%
Dec-2018	\$ 773,500.00	\$ 314,376.06	\$ 459,123.94	40.64%	Dec-2018	\$ 773,500.00	\$ 273,691.53	\$ 499,808.47	35.38%
Jan-2019	\$ 737,345.00	\$ 368,554.17	\$ 368,790.83	49.98%	Jan-2019	\$ 737,345.00	\$ 334,711.17	\$ 402,633.83	45.39%
Feb-2019	\$ 737,345.00	\$ 436,474.00	\$ 300,871.00	59.20%	Feb-2019	\$ 737,345.00	\$ 448,037.85	\$ 289,307.15	60.76%
Mar-2019			\$ -	#DIV/0!	Mar-2019		\$ -	\$ -	#DIV/0!
Apr-2019			\$ -	#DIV/0!	Apr-2019		\$ -	\$ -	#DIV/0!
May-2019			\$ -	#DIV/0!	May-2019		\$ -	\$ -	#DIV/0!
Jun-2019			\$ -	#DIV/0!	Jun-2019		\$ -	\$ -	#DIV/0!

GRANT FUND

EXPENDITURES

REVENUE

			BUDGET	BUDGET				BUDGET	BUDGET
	BUDGET AMOUNT	YTD ACTIVITY	BALANCE	%		BUDGET AMOUNT	YTD ACTIVITY	BALANCE	%
Jul-2018	\$ 2,009,948.00	\$ 172,281.06	\$ 1,837,666.94	8.57%	Jul-2018	\$ 2,009,948.00	\$ -	\$ 2,009,948.00	0.00%
Aug-2018	\$ 2,009,948.00	\$ 344,063.07	\$ 1,665,884.93	17.12%	Aug-2018	\$ 2,009,948.00	\$ 229,995.00	\$ 1,779,953.00	11.44%
Sept-2018	\$ 2,009,948.00	\$ 460,021.65	\$ 1,549,926.35	22.89%	Sept-2018	\$ 2,009,948.00	\$ 229,685.14	\$ 1,780,262.86	11.43%
Oct-2018	\$ 2,340,707.00	\$ 586,432.83	\$ 1,754,274.17	25.05%	Oct-2018	\$ 2,340,707.00	\$ 636,021.08	\$ 1,704,685.92	27.17%
Nov-2018	\$ 2,357,707.00	\$ 758,545.80	\$ 1,599,161.20	32.17%	Nov-2018	\$ 2,357,707.00	\$ 906,821.08	\$ 1,450,885.92	38.46%
Dec-2018	\$ 2,357,707.00	\$ 882,195.02	\$ 1,475,511.98	37.42%	Dec-2018	\$ 2,357,707.00	\$ 1,181,073.08	\$ 1,176,633.92	50.09%
Jan-2019	\$ 2,751,708.00	\$ 998,189.17	\$ 1,753,518.83	36.28%	Jan-2019	\$ 2,751,708.00	\$ 1,302,614.08	\$ 1,449,093.92	47.34%
Feb-2019	\$ 2,751,708.00	\$ 1,149,088.27	\$ 1,602,619.73	41.76%	Feb-2019	\$ 2,751,708.00	\$ 1,361,707.08	\$ 1,390,000.92	49.49%
Mar-2019			\$ -	#DIV/0!	Mar-2019		\$ -	\$ -	#DIV/0!
Apr-2019			\$ -	#DIV/0!	Apr-2019		\$ -	\$ -	#DIV/0!
May-2019			\$ -	#DIV/0!	May-2019		\$ -	\$ -	#DIV/0!
Jun-2019			\$ -	#DIV/0!	Jun-2019		\$ -	\$ -	#DIV/0!

CENTER FUND

EXPENDITURES

REVENUE

			BUDGET	BUDGET				BUDGET	BUDGET
	BUDGET AMOUNT	YTD ACTIVITY	BALANCE	%		BUDGET AMOUNT	YTD ACTIVITY	BALANCE	%
Jul-2018	\$ 151,301.00	\$ 8,232.11	\$ 143,068.89	5.44%	Jul-2018	\$ 151,301.00	\$ -	\$ 151,301.00	0.00%
Aug-2018	\$ 151,301.00	\$ 16,963.56	\$ 134,337.44	11.21%	Aug-2018	\$ 151,301.00	\$ 1,116.25	\$ 150,184.75	0.74%
Sept-2018	\$ 151,301.00	\$ 26,976.12	\$ 124,324.88	17.83%	Sept-2018	\$ 151,301.00	\$ 4,879.50	\$ 146,421.50	3.23%
Oct-2018	\$ 151,301.00	\$ 39,311.74	\$ 111,989.26	25.98%	Oct-2018	\$ 151,301.00	\$ 10,380.25	\$ 140,920.75	6.86%
Nov-2018	\$ 151,301.00	\$ 50,844.25	\$ 100,456.75	33.60%	Nov-2018	\$ 151,301.00	\$ 15,401.50	\$ 135,899.50	10.18%
Dec-2018	\$ 151,301.00	\$ 66,066.37	\$ 85,234.63	43.67%	Dec-2018	\$ 151,301.00	\$ 57,627.77	\$ 93,673.23	38.09%
Jan-2019	\$ 166,681.00	\$ 79,321.69	\$ 87,359.31	47.59%	Jan-2019	\$ 166,681.00	\$ 61,603.02	\$ 105,077.98	36.96%
Feb-2019	\$ 166,681.00	\$ 98,950.69	\$ 67,730.31	59.37%	Feb-2019	\$ 166,681.00	\$ 124,498.61	\$ 42,182.39	74.69%
Mar-2019			\$ -	#DIV/0!	Mar-2019		\$ -	\$ -	#DIV/0!
Apr-2019			\$ -	#DIV/0!	Apr-2019		\$ -	\$ -	#DIV/0!
May-2019			\$ -	#DIV/0!	May-2019		\$ -	\$ -	#DIV/0!
Jun-2019			\$ -	#DIV/0!	Jun-2019		\$ -	\$ -	#DIV/0!

HEADSTART FUND									
EXPENDITURES					REVENUE				
	BUDGET		BUDGET			BUDGET		BUDGET	
	BUDGET AMOUNT	YTD ACTIVITY	BALANCE	%		BUDGET AMOUNT	YTD ACTIVITY	BALANCE	%
Jul-2018	\$ 551,822.00	\$ 42,845.49	\$ 508,976.51	7.76%	Jul-2018	\$ 551,822.00	\$ -	\$ 551,822.00	0.00%
Aug-2018	\$ 551,822.00	\$ 88,739.06	\$ 463,082.94	16.08%	Aug-2018	\$ 551,822.00	\$ 121,643.45	\$ 430,178.55	22.04%
Sept.-2018	\$ 551,822.00	\$ 138,578.18	\$ 413,243.82	25.11%	Sept.-2018	\$ 551,822.00	\$ 81,675.00	\$ 470,147.00	14.80%
Oct-2018	\$ 551,822.00	\$ 195,166.07	\$ 356,655.93	35.37%	Oct-2018	\$ 551,822.00	\$ 206,689.73	\$ 345,132.27	37.46%
Nov-2018	\$ 551,822.00	\$ 248,646.93	\$ 303,175.07	45.06%	Nov-2018	\$ 551,822.00	\$ 206,689.73	\$ 345,132.27	37.46%
Dec-2018	\$ 551,822.00	\$ 327,168.82	\$ 224,653.18	59.29%	Dec-2018	\$ 551,822.00	\$ 206,689.73	\$ 345,132.27	37.46%
Jan-2019	\$ 621,028.00	\$ 417,403.48	\$ 203,624.52	67.21%	Jan-2019	\$ 621,028.00	\$ 435,936.73	\$ 185,091.27	70.20%
Feb-2019	\$ 621,028.00	\$ 477,783.22	\$ 143,244.78	76.93%	Feb-2019	\$ 621,028.00	\$ 450,720.73	\$ 170,307.27	72.58%
Mar-2019			\$ -	#DIV/0!	Mar-2019			\$ -	#DIV/0!
Apr-2019			\$ -	#DIV/0!	Apr-2019			\$ -	#DIV/0!
May-2019			\$ -	#DIV/0!	May-2019			\$ -	#DIV/0!
Jun-2019			\$ -	#DIV/0!	Jun-2019			\$ -	#DIV/0!
BOND FUND									
EXPENDITURES					REVENUE				
	BUDGET		BUDGET			BUDGET		BUDGET	
	BUDGET AMOUNT	YTD ACTIVITY	BALANCE	%		BUDGET AMOUNT	YTD ACTIVITY	BALANCE	%
Jul-2018	\$ 1,995,365.00	\$ -	\$ 1,995,365.00	0.00%	Jul-2018	\$ 1,995,365.00	\$ 61,327.79	\$ 1,934,037.21	3.07%
Aug-2018	\$ 1,995,365.00	\$ -	\$ 1,995,365.00	0.00%	Aug-2018	\$ 1,995,365.00	\$ 80,134.46	\$ 1,915,230.54	4.02%
Sept.-2018	\$ 1,995,365.00	\$ -	\$ 1,995,365.00	0.00%	Sept.-2018	\$ 1,995,365.00	\$ 86,368.48	\$ 1,908,996.52	4.33%
Oct-2018	\$ 1,995,365.00	\$ -	\$ 1,995,365.00	0.00%	Oct-2018	\$ 1,995,365.00	\$ 92,032.46	\$ 1,903,332.54	4.61%
Nov-2018	\$ 1,995,365.00	\$ 628,756.19	\$ 1,366,608.81	31.51%	Nov-2018	\$ 1,995,365.00	\$ 96,468.23	\$ 1,898,896.77	4.83%
Dec-2018	\$ 1,995,365.00	\$ 628,756.19	\$ 1,366,608.81	31.51%	Dec-2018	\$ 1,995,365.00	\$ 100,032.19	\$ 1,895,332.81	5.01%
Jan-2019	\$ 2,024,977.00	\$ 628,756.19	\$ 1,396,220.81	31.05%	Jan-2019	\$ 2,024,977.00	\$ 102,524.20	\$ 1,922,452.80	5.06%
Feb-2019	\$ 2,024,977.00	\$ 628,756.19	\$ 1,396,220.81	31.05%	Feb-2019	\$ 2,024,977.00	\$ 133,611.97	\$ 1,891,365.03	6.60%
Mar-2019			\$ -	#DIV/0!	Mar-2019			\$ -	#DIV/0!
Apr-2019			\$ -	#DIV/0!	Apr-2019			\$ -	#DIV/0!
May-2019			\$ -	#DIV/0!	May-2019			\$ -	#DIV/0!
Jun-2019			\$ -	#DIV/0!	Jun-2019			\$ -	#DIV/0!
CAPITAL PROJECT FUND									
EXPENDITURES					REVENUE				
	BUDGET		BUDGET			BUDGET		BUDGET	
	BUDGET AMOUNT	YTD ACTIVITY	BALANCE	%		BUDGET AMOUNT	YTD ACTIVITY	BALANCE	%
Jul-2018	\$ 758,690.00	\$ 113,590.63	\$ 645,099.37	14.97%	Jul-2018	\$ 758,690.00	\$ 137,098.40	\$ 621,591.60	18.07%
Aug-2018	\$ 758,690.00	\$ 166,932.83	\$ 591,757.17	22.00%	Aug-2018	\$ 758,690.00	\$ 137,098.40	\$ 621,591.60	18.07%
Sept.-2018	\$ 758,690.00	\$ 194,027.38	\$ 564,662.62	25.57%	Sept.-2018	\$ 758,690.00	\$ 147,098.40	\$ 611,591.60	19.39%
Oct-2018	\$ 758,690.00	\$ 207,875.86	\$ 550,814.14	27.40%	Oct-2018	\$ 758,690.00	\$ 157,098.40	\$ 601,591.60	20.71%
Nov-2018	\$ 758,690.00	\$ 237,430.40	\$ 521,259.60	31.29%	Nov-2018	\$ 758,690.00	\$ 167,098.40	\$ 591,591.60	22.02%
Dec-2018	\$ 758,690.00	\$ 250,976.16	\$ 507,713.84	33.08%	Dec-2018	\$ 758,690.00	\$ 177,098.40	\$ 581,591.60	23.34%
Jan-2019	\$ 702,834.00	\$ 274,602.39	\$ 428,231.61	39.07%	Jan-2019	\$ 702,834.00	\$ 187,098.40	\$ 515,735.60	26.62%
Feb-2019	\$ 702,834.00	\$ 281,811.53	\$ 421,022.47	40.10%	Feb-2019	\$ 702,834.00	\$ 197,098.40	\$ 505,735.60	28.04%
Mar-2019			\$ -	#DIV/0!	Mar-2019			\$ -	#DIV/0!
Apr-2019			\$ -	#DIV/0!	Apr-2019			\$ -	#DIV/0!
May-2019			\$ -	#DIV/0!	May-2019			\$ -	#DIV/0!
Jun-2019			\$ -	#DIV/0!	Jun-2019			\$ -	#DIV/0!

		<u>Beginning Balance</u>	<u>Activity</u>	<u>Deposits</u>	<u>Ending Balance</u>
<u>PITTS ELEM./THE CENTER</u>					
The Center Activity Fund 907040					
July	\$	11,261.94	\$ -	\$ -	\$ 11,261.94
August	\$	11,261.94	\$ 90.75	\$ 490.00	\$ 11,661.19
September	\$	11,661.19	\$ -	\$ 3,962.50	\$ 15,623.69
October	\$	15,623.69	\$ 220.50	\$ 4,545.75	\$ 19,948.94
November	\$	19,948.94	\$ 193.45	\$ -	\$ 19,755.49
December	\$	19,755.49	\$ 2,773.70	\$ -	\$ 16,981.79
January	\$	16,981.79	\$ -	\$ 3,500.00	\$ 20,481.79
February	\$	20,481.79	\$ 10,285.37	\$ 1,893.42	\$ 12,089.84
March	\$	-	\$ -	\$ -	\$ -
April	\$	-	\$ -	\$ -	\$ -
May	\$	-	\$ -	\$ -	\$ -
June	\$	-	\$ -	\$ -	\$ -
Pitts Elem. Library Fund 344727					
July	\$	1,249.60	\$ -	\$ -	\$ 1,249.60
August	\$	1,249.60	\$ -	\$ -	\$ 1,249.60
September	\$	1,249.60	\$ 8.22	\$ -	\$ 1,241.38
October	\$	1,241.38	\$ 15.95	\$ -	\$ 1,225.43
November	\$	1,225.43	\$ -	\$ -	\$ 1,225.43
December	\$	1,225.43	\$ -	\$ -	\$ 1,225.43
January	\$	1,225.43	\$ 45.00	\$ -	\$ 1,180.43
February	\$	1,180.43	\$ 100.00	\$ 2,076.92	\$ 3,157.35
March	\$	-	\$ -	\$ -	\$ -
April	\$	-	\$ -	\$ -	\$ -
May	\$	-	\$ -	\$ -	\$ -
June	\$	-	\$ -	\$ -	\$ -
<u>West Park Elementary</u>					
West Park Activity Fund 316064					
July	\$	16,173.30	\$ -	\$ 36.33	\$ 16,209.63
August	\$	16,209.63	\$ 314.77	\$ 141.37	\$ 16,036.23
September	\$	16,036.23	\$ 384.83	\$ 2,475.44	\$ 18,126.84
October	\$	18,126.84	\$ 116.85	\$ 110.39	\$ 18,120.38
November	\$	18,120.38	\$ 525.00	\$ 706.64	\$ 18,302.02
December	\$	18,302.02	\$ 731.95	\$ 61.44	\$ 17,631.51
January	\$	17,631.51	\$ 275.00	\$ 921.95	\$ 18,278.46
February	\$	18,278.46	\$ 163.36	\$ 1.49	\$ 18,116.59
March	\$	-	\$ -	\$ -	\$ -
April	\$	-	\$ -	\$ -	\$ -
May	\$	-	\$ -	\$ -	\$ -
June	\$	-	\$ -	\$ -	\$ -
West Park PTN 344735					
July	\$	6,389.62	\$ 248.40	\$ -	\$ 6,141.22
August	\$	6,141.22	\$ 128.17	\$ -	\$ 6,013.05
September	\$	6,013.05	\$ 55.42	\$ 27.00	\$ 5,984.63
October	\$	5,984.63	\$ 55.41	\$ -	\$ 5,929.22
November	\$	5,929.22	\$ 62.76	\$ -	\$ 5,866.46
December	\$	5,866.46	\$ -	\$ -	\$ 5,866.46
January	\$	5,866.46	\$ 71.35	\$ -	\$ 5,795.11
February	\$	5,795.11	\$ 65.22	\$ 775.00	\$ 6,504.89
March	\$	-	\$ -	\$ -	\$ -
April	\$	-	\$ -	\$ -	\$ -
May	\$	-	\$ -	\$ -	\$ -
June	\$	-	\$ -	\$ -	\$ -

		<u>Beginning Balance</u>	<u>Activity</u>	<u>Deposits</u>	<u>Ending Balance</u>
<u>Lake County Intermediate School</u>					
LCMS Activity Fund	July	\$ 76,051.63	\$ 1,332.00	\$ 6.38	\$ 74,726.01
8299	August	\$ 74,726.01	\$ 5,219.25	\$ 86.24	\$ 69,593.00
	September	\$ 69,593.00	\$ 9,436.07	\$ 1,363.26	\$ 61,520.19
	October	\$ 61,520.19	\$ 2,165.37	\$ 1,080.18	\$ 60,435.00
	November	\$ 60,435.00	\$ 1,326.46	\$ 1,525.55	\$ 60,634.09
	December	\$ 60,634.09	\$ 2,613.07	\$ 1,033.65	\$ 59,054.67
	January	\$ 59,054.67	\$ 803.78	\$ 521.90	\$ 58,772.79
	February	\$ 58,772.79	\$ 1,605.46	\$ 5,372.69	\$ 62,540.02
	March	\$ -	\$ -	\$ -	\$ -
	April	\$ -	\$ -	\$ -	\$ -
	May	\$ -	\$ -	\$ -	\$ -
	June	\$ -	\$ -	\$ -	\$ -
<u>Lake County High School</u>					
LCHS Activity Fund	July	\$ 134,051.11	\$ 4,365.93	\$ 366.09	\$ 130,051.27
2102	August	\$ 130,051.27	\$ 1,772.44	\$ 13,168.24	\$ 141,447.07
	September	\$ 141,447.07	\$ 14,990.26	\$ 29,005.02	\$ 155,461.83
	October	\$ 155,461.83	\$ 14,130.65	\$ 20,283.59	\$ 161,614.77
	November	\$ 161,614.77	\$ 15,830.99	\$ 26,449.58	\$ 172,233.36
	December	\$ 172,233.36	\$ 32,289.58	\$ 10,678.66	\$ 150,622.44
	January	\$ 150,622.44	\$ 5,732.13	\$ 21,067.72	\$ 165,958.03
	February	\$ 165,958.03	\$ 28,606.72	\$ 27,697.75	\$ 165,049.06
	March	\$ -	\$ -	\$ -	\$ -
	April	\$ -	\$ -	\$ -	\$ -
	May	\$ -	\$ -	\$ -	\$ -
	June	\$ -	\$ -	\$ -	\$ -



CONSOLIDATED BILLING CONTROL ACCOUNT STATEMENT

Prepared For	LAKE COUNTY SCHOOL RENA SANCHEZ
Account Number	
Statement Closing Date	03/03/19
Days in Billing Cycle	28
Next Statement Date	04/03/19

For 24-Hour Customer Service Call:
800-231-5511

Inquiries or Questions:

Wells Fargo SBL PO Box 29482
Phoenix, AZ 85038-8650

Payments:

Elite Card Payment Center PO Box 77066
Minneapolis, MN 55480-7766

Payment Information

New Balance	\$12,326.92
Current Payment Due (Minimum Payment)	\$617.00
Current Payment Due Date	03/28/19

Thank you for using our Automatic Payment service. See the **Important Information** section below for your next scheduled payment.

If you wish to pay off your balance in full: The balance noted on your statement is not the payoff amount. Please call 800-231-5511 for payoff information.

Account Summary

Previous Balance	\$13,013.61
Credits	- \$173.93
Payments	- \$12,839.68
Purchases & Other Charges	+ \$12,326.92
Cash Advances	+ \$0.00
Finance Charges	+ \$0.00
New Balance	= \$12,326.92

Wells Fargo Business Card Rewards - Legacy

Membership No:	
Previous Balance	263,045
Points Earned this Month	12,153
Points From Other Company Cards	0
Bonus Points Earned	0
Adjustments	0
Earn More Mall® Bonus Points	0
Redeemed	- 0
Total Available	= 275,198

Rewards Notice

Check your point balance and redeem your points at wellfargorewards.com. You can also call our Rewards Service Center from 8 a.m. to midnight (ET) at 1-800-213-3365.

See reverse side for important information.

5596 0010 YTG 1 7 2 190303 0 PAGE 1 of 6 1 0 3268 1000 ELAC 01DR5596 39858

DETACH HERE

Detach and mail with check payable to "Wells Fargo" to arrive by Current Payment Due Date.

Make checks payable to: Wells Fargo

Account Number	
New Balance	\$12,326.92
Total Amount Due (Minimum Payment)	\$617.00
Current Payment Due Date	03/28/19

Amount Enclosed: \$

Print address or phone changes:

Work ()

ELITE CARD PAYMENT CENTER YTG 30
PO BOX 77066
MINNEAPOLIS MN 55480-7766

LAKE COUNTY SCHOOL
RENA SANCHEZ
328 W 5TH ST
LEADVILLE CO 80461-3547

39858 MSP 251





Rate Information

Your rate may vary according to the terms of your agreement.

TYPE OF BALANCE	ANNUAL INTEREST RATE	DAILY FINANCE CHARGE RATE	AVERAGE DAILY BALANCE	PERIODIC FINANCE CHARGES	TRANSACTION FINANCE CHARGES	TOTAL FINANCE CHARGES
PURCHASES	13.490%	.03695%	\$0.00	\$0.00	\$0.00	\$0.00
CASH ADVANCES	24.240%	.06641%	\$0.00	\$0.00	\$0.00	\$0.00
TOTAL				\$0.00	\$0.00	\$0.00

Important Information

\$0 - \$12,326.92 WILL BE DEDUCTED FROM YOUR ACCOUNT AND CREDITED AS YOUR AUTOMATIC PAYMENT ON 03/28/19. THE AUTOMATIC PAYMENT AMOUNT WILL BE REDUCED BY ALL PAYMENTS POSTED ON OR BEFORE THIS DATE.

TOTAL *FINANCE CHARGE* BILLED IN 2018 \$0.00

TOTAL *FINANCE CHARGE* PAID IN 2018 \$0.00

Summary of Sub Account Usage

Name	Sub Account Number Ending In	Monthly Spending Cap	Spend This Period
NOREEN FLORES		9,000	\$235.35
WENDY WYMAN		10,000	\$1,126.09
KATE BARTLETT		5,000	\$298.51
BUNNY TAYLOR		10,000	\$2,141.60
JAMES FOGARTY		5,000	\$866.25
TANYA LENHARD		5,000	\$247.99
RENA SANCHEZ		10,000	\$0.00
KERRI QUINLAN		5,000	\$2,984.59
AIDAN FLEMING		5,000	\$162.61
BEN CAIRNS		5,000	\$395.04
MICHAEL VAGHER		5,000	\$2,226.25
TODD COFFIN		5,000	\$1,303.23
KATHLEEN FITZSIMMONS		5,000	\$165.48

Transaction Details

The transactions detailed on this Consolidated Billing Control Account Statement contain transactions made directly to this Control Account plus all transactions made on Sub Accounts. If there were no transactions made by a Sub Account that Sub Account will not appear.

Trans Post	Reference Number	Description	Credits	Charges
02/28	02/28	F3268001V00CHGDDA		
		AUTOMATIC PAYMENT - THANK YOU	12,839.68	
		TOTAL	\$12,839.68	
Transaction Summary For NOREEN FLORES				
		Sub Account Number Ending In		
02/04	02/04	24270761461BV9RX0		6.85
02/13	02/13	24492151DS1DRAZ7Q		179.00
02/28	02/28	24210731V2DYZT61Z		49.50
		TOTAL		\$235.35
		NOREEN FLORES / Sub Acct Ending In		
Transaction Summary For WENDY WYMAN				
		Sub Account Number Ending In		
02/07	02/07	2469216162X6PFFAQ		44.00
02/20	02/20	24431061LM0R2JQMZ		239.09
02/28	02/28	24906411V206TVLZA		823.00
02/28	02/28	24906411V206TVM11		20.00
		TOTAL		\$1,126.09
		WENDY WYMAN / Sub Acct Ending In		

Transaction Details

Trans Post	Reference Number	Description	Credits	Charges
Transaction Summary For KATE BARTLETT				
Sub Account Number Ending In				
02/05	02/05	24013391500NQN3V		81.75
02/11	02/11	24906411A1ZDQ0RLS		39.96
02/21	02/21	24789301M09D159BS		38.21
02/21	02/21	24906411L1ZVZ8BJF		30.00
02/27	02/27	24013391V03EX1DBL		108.59
TOTAL				\$298.51
KATE BARTLETT / Sub Acct Ending In				
Transaction Summary For BUNNY TAYLOR				
Sub Account Number Ending In				
02/06	02/06	2432304164J9Y8DBS		431.99
02/06	02/06	247170516GWMJ4K9		379.98
		04/02/19		
		1 F9 Q		
		2 F9 B		
02/06	02/06	247893016SL542T13		195.00
02/09	02/09	2449398181H1ESZY		259.26
02/10	02/10	2469216192XY4WN01		107.00
02/11	02/11	24000971AVFEQLK6N		98.52
02/14	02/14	24906411D1ZHWLLFG		80.50
02/15	02/15	24269791F0143G5ZV		47.10
02/25	02/25	24492151RS0W0KXWN		60.00
02/26	02/26	24228991V0GRV0JES		398.25
03/01	03/01	24431061XMOFSLGL4		84.00
TOTAL				\$2,141.60
BUNNY TAYLOR / Sub Acct Ending In				
Transaction Summary For JAMES FOGARTY				
Sub Account Number Ending In				
02/08	02/08	2469216172XXS3W3S		120.00
02/09	02/09	2469216182X4Z3N0B		9.12
02/10	02/10	2469216192XNB8EST		226.79
02/11	02/11	24692161A2XFKR420		39.92
02/12	02/12	24692161B2Y00Z25B		13.54
02/14	02/14	24906411D1ZHMEN6R		359.88
02/20	02/20	24692161K2XJ2WTD2		149.97
02/27	02/27	74692161S2XPXKB17		
02/28	02/28	24692161V2XXEV3VG	90.96	37.99
TOTAL				\$866.25
JAMES FOGARTY / Sub Acct Ending In				
Transaction Summary For TANYA LENHARD				
Sub Account Number Ending In				
02/06	02/06	244921515LSKGOY1B		29.99
02/27	02/27	24431061VLKMK9XJ7		188.00
03/01	03/01	24492151WS116KD0W		30.00
TOTAL				\$247.99
TANYA LENHARD / Sub Acct Ending In				
Transaction Summary For KERRI QUINLAN				
Sub Account Number Ending In				
02/06	02/06	244921515LSHYD7KP		675.00
02/12	02/12	24492151BLSQ98REE		259.00
02/12	02/12	24492151BMHDSGJ18		10.50
02/13	02/13	24193041D00000003Y		49.05
02/23	02/23	24497781PS56FWE85		258.00
02/26	02/26	24270761T8AFR2SDA		200.00
02/26	02/26	24270761T8AFR2SDJ		1,000.00
02/26	02/26	24270761T8AFR2SD2		200.00
02/28	02/28	24431061WWQ1RNE28		35.04
03/01	03/01	24431061X8AG0JDSF		149.00
03/01	03/01	24431061X8AG0JDSZ		149.00
TOTAL				\$2,984.59
KERRI QUINLAN / Sub Acct Ending In				
Transaction Summary For AIDAN FLEMING				
Sub Account Number Ending In				
02/14	02/14	24692161D2XR90BRE		26.97
02/14	02/14	24692161D2XWN11DE		34.99
02/14	02/14	24692161D2XYSTVYL		21.03
02/14	02/14	24692161D2XYTKRS		5.57
02/15	02/15	24692161E2XGTHDYA		33.22
02/24	02/24	24692161P2Y1APA6V		40.83
TOTAL				\$162.61
AIDAN FLEMING / Sub Acct Ending In				





Transaction Details

Trans	Post	Reference Number	Description	Credits	Charges
Transaction Summary For BEN CAIRNS					
Sub Account Number Ending In					
02/11	02/11	24692161A2XLP LBSY	Amazon.com*MB8053WU2 Amzn.com/bill WA		48.23
02/15	02/15	24431061F2MEXPL4J	PIZZA HUT 270 LEADVILLE CO		92.97
02/15	02/15	24431061F2MFOK5RQ	PIZZA HUT 270 LEADVILLE CO		82.97
02/15	02/15	74431061F2MEXPL4F	PIZZA HUT 270 LEADVILLE CO 301.10.2100.00.0012 02	82.97	
02/20	02/20	24251371LOGT6B0VY	LOS CHAVALOS MEXICAN REST DEL NORTE CO		19.31
02/21	02/21	24000971M0EDY0VW0	GAZPACHO NEW MEXICAN COOK DURANGO CO		38.91
02/22	02/22	24431051N60T317H9	BEST WESTERN RIO GRANDE DURANGO CO		195.62
TOTAL				\$395.04	
BEN CAIRNS / Sub Acct Ending In					
Transaction Summary For MICHAEL VAGHER					
Sub Account Number Ending In					
02/06	02/06	244273316LM84Z38M	CHICK-FIL-A #02636 ARVADA CO		14.19
02/06	02/06	2469216152XJAMBLH	AMZN Mktp US*MI78E8OC0 Amzn.com/bill WA		26.99
02/06	02/06	2469216152XJQ6H6D	AMZN Mktp US*MI2KX8OQ1 Amzn.com/bill WA		145.98
02/06	02/06	2469216152XL8SDNW	Amazon.com*MI2BE7FG0 Amzn.com/bill WA		132.55
02/07	02/07	2469216162XXKB04Q	Amazon.com*MI8QE2451 Amzn.com/bill WA		297.35
02/08	02/08	2469216172XX3DRYP	Amazon.com*MI55X4LT0 Amzn.com/bill WA		80.16
02/08	02/08	248019717M4E25RVT	SIGNS.COM 801-355-4124 UT		151.74
02/13	02/13	24493981Q603QQXMR	EDUCATION ADMIN WEB ADVI 512-703-1526 TX		1,099.00
02/13	02/13	24639231DS66DJXGD	BIG HORN TRUE VALUE LEADVILLE CO		16.01
02/13	02/13	24692161Q2XB32TQ9	AMERICAN RED CROSS 800-733-2767 DC		30.00
02/14	02/14	24207851D617ZGKSQ	CARRON NET CO. INC. 920-7932217 WI		17.19
02/14	02/14	24692161D2XHK3FFF	AMZN Mktp US*MI36Z8T80 Amzn.com/bill WA		17.98
02/21	02/21	24431061M2LZAYZWJ	CHIPOTLE 0644 LAKEWOOD CO		22.84
02/24	02/24	24013391R0346AJK4	Tommyknocker Brewery and IDAHO SPRINGS CO		71.70
03/02	03/02	24431061X6AQJDP58	MF ATHLETIC & PERFORM BE 800-556-7464 RI		102.57
TOTAL				\$2,226.25	
MICHAEL VAGHER / Sub Acct Ending In					
Transaction Summary For TODD COFFIN					
Sub Account Number Ending In					
02/12	02/12	24492151BLY35JT89	AMERICAN KEY SUPPLY 800-692-1898 NV		81.30
02/13	02/13	24247601DHEWTBMKT	CENTRAL PARTS WAREHOUSE 815-464-4800 IL		10.16
02/13	02/13	24492151QLY754907	PLUMBING SUPPLY 151-825-1459 NY		477.00
02/21	02/21	24431061L0D17HGXF	SUPPLYHOUSE.COM 888-757-4774 NY		276.77
02/22	02/22	24204291M0060BZZY	eBay 800-456-3229 800-4563229 CA		458.00
TOTAL				\$1,303.23	
TODD COFFIN / Sub Acct Ending In					
Transaction Summary For KATHLEEN FITZSIMMONS					
Sub Account Number Ending In					
02/08	02/08	244310618LA6WSMTA	STARBUCKS DUMONT KEYSTONE CO		22.96
02/09	02/09	2460794182LW8PL8Y	TUKTUK LAKEWOOD CO		43.52
02/26	02/26	24492151S0TH291TW	STANFORD SCPD 650-725-3016 CA		99.00
TOTAL				\$165.48	
KATHLEEN FITZSIMMONS / Sub Acct Ending In					

Wells Fargo News

What can alerts do for your business?*

Receive timely updates on your business credit card account via email or text. Alerts allow you to set up and receive only the messages that are important to you. Sign up for alerts during your Wells Fargo Business Online® session by going to your Business Elite Card account screen and selecting the Manage Alerts menu option.

Not enrolled in Online banking? Enroll today at wells.fargo.com/biz/online-banking

*Availability may be affected by your mobile carrier's coverage area. Your mobile carrier's message and data rates may apply.

Check Date 02/01/19 - 02/28/19

Vendor Detail Report

FMVEN10A

Vendor	Check Key	Check Date	Invoice No	Po No	Description	Account No	Amount
401 (K) VOL. INVESTMENT PLAN		175					
	0100004381	02/28/19	02-28-2019_4		2/401K	9-10-000-00-0000-7477-000-000000	2,070.58
						Check Total	2,070.58
						Vendor Total	2,070.58
ABIGAIL REIGEL		34304					
	0100093703	02/22/19	02-22-2019_1		1/28 BOOKWORKS STU TUTOR	9-22-100-10-0010-0150-201-007377	16.65
						Check Total	16.65
						Vendor Total	16.65
ACORN PETROLEUM, INC.		270					
	0100093604	02/06/19	941727		1/15-1/31 FUEL	9-10-720-27-2700-0626-000-000000	2,832.60
	0100093604	02/06/19	941727		1/15-1/31 FUEL	9-10-710-26-2600-0626-000-000000	404.35
	0100093604	02/06/19	941727		EARLY PAY DISCOUNT	9-10-720-27-2700-0626-000-000000	-39.24
						Check Total	3,197.71
	0100093704	02/22/19	944167		2/1-2/15 FUEL	9-10-710-26-2600-0626-000-000000	303.63
	0100093704	02/22/19	944167		2/1-2/15 FUEL	9-10-720-27-2700-0626-000-000000	2,336.35
	0100093704	02/22/19	944167		EARLY PAY DISCOUNT	9-10-720-27-2700-0626-000-000000	-32.70
						Check Total	2,607.28
	0100093758	02/28/19	000943315		DEF FOR BUSES	9-10-720-27-2700-0430-000-000000	237.50
						Check Total	237.50
						Vendor Total	6,042.49
ACT		427					
	0100093605	02/06/19	1214557		WORKKEYS	9-10-602-10-0090-0340-000-000000	120.00
						Check Total	120.00
						Vendor Total	120.00
ADRIANA RODRIGUEZ		34568					
	0100093705	02/22/19	02-22-2019_11		1/11-2/10 TRAVEL REIM	9-21-740-31-3100-0580-000-000000	14.49
						Check Total	14.49
						Vendor Total	14.49

Vendor	Check Key	Check Date	Invoice No	Po No	Description	Account No	Amount
AFLAC PREM HOLDING C/O BNB BANK LOC 18							
	0100093734	02/26/19	26-FEB-19		PAYROLL LIABILITIES	9-10-000-00-0000-7421-000-000000	207.94
	0100093734	02/26/19	26-FEB-19		PAYROLL LIABILITIES	9-27-000-00-0000-7421-000-000000	5.08
	0100093734	02/26/19	26-FEB-19		PAYROLL LIABILITIES	9-22-000-00-0000-7421-000-000000	1.22
	0100093734	02/26/19	26-FEB-19		PAYROLL LIABILITIES	9-22-000-00-0000-7421-000-000000	12.65
	0100093734	02/26/19	26-FEB-19		PAYROLL LIABILITIES	9-10-000-00-0000-7421-000-000000	33.96
					Check Total		<u>260.85</u>
					Vendor Total		<u>260.85</u>
AFSCME COUNCIL 76 257							
	0100093735	02/26/19	26-FEB-19		PAYROLL LIABILITIES	9-21-000-00-0000-7421-000-000000	126.26
	0100093735	02/26/19	26-FEB-19		PAYROLL LIABILITIES	9-27-000-00-0000-7421-000-000000	31.27
	0100093735	02/26/19	26-FEB-19		PAYROLL LIABILITIES	9-26-000-00-0000-7421-000-000000	.65
	0100093735	02/26/19	26-FEB-19		PAYROLL LIABILITIES	9-22-000-00-0000-7421-000-000000	3.78
	0100093735	02/26/19	26-FEB-19		PAYROLL LIABILITIES	9-19-000-00-0000-7421-000-000000	2.25
	0100093735	02/26/19	26-FEB-19		PAYROLL LIABILITIES	9-10-000-00-0000-7421-000-000000	308.69
					Check Total		<u>472.90</u>
					Vendor Total		<u>472.90</u>
ALEX DURAN 33642							
	0100093691	02/14/19	02-14-2019_1		CMEA CONFERENCE MEAL REIM	9-10-602-20-2213-0350-000-000000	64.74
					Check Total		<u>64.74</u>
					Vendor Total		<u>64.74</u>
ALISON SANDOVAL 337							
	0100093638	02/08/19	02-08-2019_12		FOOD REIM	9-10-720-27-2700-0690-000-000000	20.85
					Check Total		<u>20.85</u>
					Vendor Total		<u>20.85</u>
ALL COVERED 24350							
	0100093582	02/01/19	880942		1/CHARGES	9-10-602-20-2290-0300-000-000000	7,771.00
	0100093582	02/01/19	880942		IT CHARGES	9-10-602-20-2290-0300-000-000000	75.00
					Check Total		<u>7,846.00</u>
					Vendor Total		<u>7,846.00</u>

Check Date 02/01/19 - 02/28/19

Vendor Detail Report

FMVEN10A

Vendor	Check Key	Check Date	Invoice No	Po No	Description	Account No	Amount
AMAZON.COM		4304					
	0100093706	02/22/19	02222019_16	190223	COMPLETE SPANISH ALL-IN-ONE, PREMIUM SEC	9-10-301-10-0600-0610-000-000000	412.96
	0100093706	02/22/19	02222019_19	190237	EARLY HEADSTART SUPPLIES	9-27-971-01-3330-0610-000-008600	847.30
	0100093706	02/22/19	02222019_22	190247	SEE ATTACHED ITEMS FOR EARLY HEADSTART	9-27-971-01-3330-0610-000-008600	87.89
	0100093706	02/22/19	02222019_15	190222	SEE ATTACHED ENGLISH DEPT BOOKS	9-10-602-10-0090-0640-000-000000	1,736.98
	0100093706	02/22/19	02222019_20	190245	SEE ATTACHED ITEMS	9-10-602-10-0090-0640-000-000000	1,037.40
	0100093706	02/22/19	02222019_26	190257	STERILITE 29308001 WIDE 3 DRAWER CART	9-19-971-00-0040-0610-000-003141	92.65
	0100093706	02/22/19	02222019_17	190224	PURELL ADVANCED HAND SANITIZER 2 LITER	9-10-100-10-0010-0610-000-000000	106.75
	0100093706	02/22/19	02222019_25	190255	JUSTJAMS KIDS JELLY ROLL COLORFUL IN-EAR	9-10-100-10-0010-0610-000-000000	170.91
	0100093706	02/22/19	02222019_18	190225	BROTHER P-TOUCH PTD210, EASY TO USE LABE	9-22-100-01-0010-0610-000-005287	118.06
	0100093706	02/22/19	02222019_23	190249	BASE TEN SET	9-22-100-01-0010-0610-000-005287	115.16
	0100093706	02/22/19	02222019_27	190253		9-27-971-18-3330-0500-000-008600	530.50
	0100093706	02/22/19	02222019_21	190246	SEE ATTACHED ORDER	9-22-602-00-0090-0610-000-005287	25.69
	0100093706	02/22/19	02222019_24	190250	OWL PUZZLE	9-22-602-00-0090-0610-000-005287	62.29
	0100093706	02/22/19	02222019_26	190257	STERILITE 16558010 28 QUART/27 LITER STO	9-27-971-19-3330-0610-000-008600	92.65

Check Total 5,437.19

Vendor Total 5,437.19

AMERICAN FIDELITY ASSURANCE 3685

	0100093736	02/26/19	26-FEB-19		PAYROLL LIABILITIES	9-26-000-00-0000-7421-000-000000	2.83
	0100093736	02/26/19	26-FEB-19		PAYROLL LIABILITIES	9-27-000-00-0000-7421-000-000000	22.64
	0100093736	02/26/19	26-FEB-19		PAYROLL LIABILITIES	9-27-000-00-0000-7421-000-000000	192.17
	0100093736	02/26/19	26-FEB-19		PAYROLL LIABILITIES	9-21-000-00-0000-7421-000-000000	31.32
	0100093736	02/26/19	26-FEB-19		PAYROLL LIABILITIES	9-10-000-00-0000-7421-000-000000	4,442.09
	0100093736	02/26/19	26-FEB-19		PAYROLL LIABILITIES	9-22-000-00-0000-7421-000-000000	54.89
	0100093736	02/26/19	26-FEB-19		PAYROLL LIABILITIES	9-26-000-00-0000-7421-000-000000	64.96
	0100093736	02/26/19	26-FEB-19		PAYROLL LIABILITIES	9-19-000-00-0000-7421-000-000000	174.53
	0100093736	02/26/19	26-FEB-19		PAYROLL LIABILITIES	9-19-000-00-0000-7421-000-000000	2.83
	0100093736	02/26/19	26-FEB-19		PAYROLL LIABILITIES	9-21-000-00-0000-7421-000-000000	216.57
	0100093736	02/26/19	26-FEB-19		PAYROLL LIABILITIES	9-22-000-00-0000-7421-000-000000	649.96
	0100093736	02/26/19	26-FEB-19		PAYROLL LIABILITIES	9-10-000-00-0000-7421-000-000000	339.11

Check Total 6,193.90

Vendor Total 6,193.90

Vendor	Check Key	Check Date	Invoice No	Po No	Description	Account No	Amount
AMERICAN SOLUTIONS FOR BUSINESS		31712					
	0100093606	02/06/19	INV03947447		LASER CHECKS ACCT ASB000000443486	9-10-601-25-2510-0550-000-000000	450.64
						Check Total	<u>450.64</u>
						Vendor Total	450.64
AMY PETERS		1547					
	0100093607	02/06/19	02-04-2019_7		TRACK COACH CLINIC HOTEL REIM-2 RMS	9-10-301-14-1800-0320-000-000000	260.42
						Check Total	<u>260.42</u>
						Vendor Total	260.42
ANAHISE SHOUKAS		33057					
	0100093608	02/06/19	02-04-2019_27		DEC AND JAN/PHYSICAL THERAPIST MILEAGE	9-10-602-12-1700-0580-000-003130	4.20
	0100093608	02/06/19	02-04-2019_27		DEC AND JAN/PHYSICAL THERAPIST	9-10-602-12-1700-0300-000-003130	887.75
						Check Total	<u>891.95</u>
						Vendor Total	891.95
ANDREWS FOODSERVICE SYSTEMS		1038					
	0100093609	02/06/19	2280436		1/30 COMMODITY FOOD STORAGE FEE	9-21-740-31-3100-0630-000-000000	98.80
						Check Total	<u>98.80</u>
						Vendor Total	98.80
ANNA LAURA NELSON		34878					
	0100093583	02/01/19	02-01-2019_20		STEM CLUB SUPPLY REIM	9-10-602-00-0090-0610-000-001210	26.51
						Check Total	<u>26.51</u>
						Vendor Total	26.51
ANNE SIFUENTES		30325					
	0100093610	02/06/19	02-04-2019_15		1/27-1/31 EHS TRNG EXP REIM	9-27-971-01-3330-0320-000-008600	128.09
						Check Total	<u>128.09</u>
						Vendor Total	128.09

Vendor	Check Key	Check Date	Invoice No	Po No	Description	Account No	Amount
ANTHEM LIFE INSURANCE CO.		398					
	0100093737	02/26/19	26-FEB-19		PAYROLL LIABILITIES	9-27-000-00-0000-7421-000-000000	80.72
	0100093737	02/26/19	26-FEB-19		PAYROLL LIABILITIES	9-22-000-00-0000-7421-000-000000	4.38
	0100093737	02/26/19	26-FEB-19		PAYROLL LIABILITIES	9-19-000-00-0000-7421-000-000000	67.48
	0100093737	02/26/19	26-FEB-19		PAYROLL LIABILITIES	9-10-000-00-0000-7421-000-000000	446.22
	0100093737	02/26/19	26-FEB-19		PAYROLL LIABILITIES	9-26-000-00-0000-7421-000-000000	19.98
					Check Total		618.78
					Vendor Total		618.78
ARBITER PAY TRUST ACCOUNT		26476					
	0100093639	02/08/19	02-08-2019_8		FY19 GIRLS SOCCER- ACCT C/O 1452113174	9-10-301-14-1826-0391-000-000000	2,800.00
					Check Total		2,800.00
					Vendor Total		2,800.00
ARES SPORTSWEAR		9344					
	0100093707	02/22/19	546011	190201	LOCATION OF PRING FRONT CENTER GARMENT G	9-10-301-14-1815-0610-000-000000	2,298.94
					Check Total		2,298.94
					Vendor Total		2,298.94
BIGHORN HARDWARE		93					
	0100093584	02/01/19	02-01-2019_6		1/CHARGES	9-10-710-26-2600-0430-000-000000	251.84
					Check Total		251.84
	0100093759	02/28/19	02-27-2019_35		2/CHARGES ACCT 1228	9-10-710-26-2600-0430-000-000000	170.17
					Check Total		170.17
					Vendor Total		422.01
BLICK ART MATERIAL		7159					
	0100093760	02/28/19	1145229	190258	SOUR APPLE	9-22-602-00-0090-0610-000-001229	39.87
	0100093760	02/28/19	1098557	190258	SOUR APPLE	9-22-602-00-0090-0610-000-001229	473.24
					Check Total		513.11
					Vendor Total		513.11
BRIAN HESTER		28401					
	0100093654	02/13/19	02-13-2019_4		2/7-2/8 PRINCIPAL SUB- MILEAGE	9-10-602-10-0090-0580-000-000000	135.00
	0100093654	02/13/19	02-13-2019_4		2/7-2/8 PRINCIPAL SUB-LCIS	9-10-602-10-0090-0300-000-000000	500.00
					Check Total		635.00
					Vendor Total		635.00

Check Date 02/01/19 - 02/28/19

Vendor Detail Report

FMVEN10A

Vendor	Check Key	Check Date	Invoice No	Po No	Description	Account No	Amount
BRIANA GOLDEN		34975					
	0100093741	02/26/19	02-25-2019_13		LCIS COOKING CLUB SUPPLY REIM	9-22-602-00-0090-0610-000-005287	27.31
						Check Total	27.31
						Vendor Total	27.31
BUNNY TAYLOR		2902					
	0100093708	02/22/19	02-22-2019_23		2/21 SAFETY MTG MILEAGE REIM	9-10-602-10-0090-0580-000-000000	58.50
						Check Total	58.50
						Vendor Total	58.50
BUTLER SNOW LLP		33065					
	0100093655	02/13/19	02-13-2019_25		1/URBAN RENEWAL AGREEMENT	9-10-602-10-0090-0300-000-000000	1,982.50
						Check Total	1,982.50
						Vendor Total	1,982.50
CAPLAN & EARNEST, LLC.		3779					
	0100093742	02/26/19	158931		1/CHARGES	9-10-602-10-0090-0300-000-000000	3,185.00
						Check Total	3,185.00
						Vendor Total	3,185.00
CDHS		7457					
	0100093656	02/13/19	02-13-2019_16		CURRENT EMPLOYEE TRAILS RENEWAL	9-26-971-33-3310-0810-000-000000	35.00
						Check Total	35.00
						Vendor Total	35.00
CDW GOVERNMENT, INC.		1564					
	0100093743	02/26/19	QTB2417	190217	HP SB ELITEDESK 800	9-22-602-00-0090-0610-000-004048	4,899.92
	0100093743	02/26/19	QTT7158	190217	HP SB ELITEDESK 800	9-22-602-00-0090-0610-000-004048	371.00
	0100093743	02/26/19	RCN8951	190217	HP SB ELITEDESK 800	9-22-602-00-0090-0610-000-004048	1,644.18
	0100093743	02/26/19	QLT0155	190217	HP SB ELITEDESK 800	9-22-602-00-0090-0610-000-004048	7,349.88
	0100093743	02/26/19	QZZ0334	190217	HP SB ELITEDESK 800	9-22-602-00-0090-0610-000-004048	1,096.12
						Check Total	15,361.10
						Vendor Total	15,361.10
CELESTA CAIRNS		31232					
	0100093585	02/01/19	02-01-2019_8		1/24-1/26 CMEA EXP REIM	9-10-602-20-2213-0350-000-000000	127.31
						Check Total	127.31
						Vendor Total	127.31

Check Date 02/01/19 - 02/28/19

Vendor Detail Report

FMVEN10A

Vendor	Check Key	Check Date	Invoice No	Po No	Description	Account No	Amount
CENTURYLINK		2139					
	0100093709	02/22/19	02-22-2019_28		2/719-486-0862 180B	9-10-602-10-0090-0531-000-000000	48.77
	0100093709	02/22/19	02-22-2019_27		2/K-719-111-6280 001M	9-10-602-10-0090-0531-000-000000	658.08
	0100093709	02/22/19	02-22-2019_25		2/719-486-3423 309B	9-10-602-10-0090-0531-000-000000	58.81
	0100093709	02/22/19	02-22-2019_24		2/719-486-1456 416B	9-10-602-10-0090-0531-000-000000	165.76
						Check Total	931.42
						Vendor Total	931.42
CHSAA		7					
	0100093611	02/06/19	19_1259		CHSAA MUSIC FEST-LG GR ENTRY-CH CHOIR	9-10-301-14-1800-0584-000-000000	190.00
						Check Total	190.00
						Vendor Total	190.00
CLOUD CITY CONSERVATION CENTER		23795					
	0100093710	02/22/19	31		CURRICULUM WORK	9-22-602-00-0090-0300-000-001229	270.00
	0100093710	02/22/19	23		FALL ACADEMIC SUPPORT	9-22-602-00-0090-0300-000-001229	717.50
						Check Total	987.50
						Vendor Total	987.50
CLUB Z! IN-HOME TUTORING		4987					
	0100093657	02/13/19	2996		SAT PREP WORKSHOP FOR JUNIORS	9-10-301-10-2100-0610-000-001202	500.00
						Check Total	500.00
						Vendor Total	500.00
COLO DEPT OF HUMAN SERVICES		13579					
	0100093744	02/26/19	3030		ADMIN FEES FOR COMMODITIES	9-21-740-31-3100-0610-000-000000	20.00
						Check Total	20.00
						Vendor Total	20.00
COLO. BUREAU OF INVESTIGATION		567					
	0100093658	02/13/19	A190700128		BACKGROUND CHECK	9-10-601-23-2391-0300-000-000000	39.50
						Check Total	39.50
	0100093711	02/22/19	02-22-2019_8		FINGERPRINTS-SUB O'LEARY	9-10-601-23-2391-0300-000-000000	39.50
						Check Total	39.50
						Vendor Total	79.00

Vendor	Check Key	Check Date	Invoice No	Po No	Description	Account No	Amount
COLO. DEPT. OF REVENUE		100					
	0100004380	02/28/19	02-28-2019_3		2/SIT	9-10-000-00-0000-7471-000-000000	17,255.00
						Check Total	17,255.00
						Vendor Total	17,255.00
COLORADO HIGH SCHOOL SKI LEAGUE		7706					
	0100093586	02/01/19	02-01-2019_15		FY19 LEAGUE DUES	9-10-301-14-1800-0810-000-000000	400.00
						Check Total	400.00
						Vendor Total	400.00
COLORADO SCHOOL MEDICAID CONSORTIUM		25810					
	0100093612	02/06/19	2453		3RD PAYMENT-QUARTERLY FEE	9-10-602-20-2130-0300-000-009003	490.00
						Check Total	490.00
						Vendor Total	490.00
COLORADO SPORTS OFFICIALS		24562					
	0100093761	02/28/19	2018-24		MS GIRLS BBALL REF ASSIGNOR FEE	9-10-201-14-1815-0391-000-000000	1,055.00
						Check Total	1,055.00
						Vendor Total	1,055.00
COLORADO STATE TREASURER		1740					
	0100093587	02/01/19	824812001		4TH QUARTER UNEMPLOYMENT	9-10-602-28-2850-0521-000-000000	4,080.00
						Check Total	4,080.00
						Vendor Total	4,080.00
COLORADO TRACK & FIELD OFFICIALS AS:		34924					
	0100093659	02/13/19	02-13-2019_3		AMY PETERS TRACK OFFICIALS MEM DUES	9-10-301-14-1800-0580-000-000000	60.00
						Check Total	60.00
						Vendor Total	60.00
COLORADO YOUTH FOR A CHANGE		32247					
	0100093613	02/06/19	1626		FY19 FINAL BILL-CYC SPECIALIST	9-22-602-00-2100-0300-000-003183	22,500.00
						Check Total	22,500.00
						Vendor Total	22,500.00

Vendor Detail Report

Vendor	Check Key	Check Date	Invoice No	Po No	Description	Account No	Amount
COMMERCIAL SPECIALTIES OF WESTERN C 28614							
	0100093762	02/28/19	7693		LCHS FIRE ALARM REPAIR	9-10-710-26-2600-0300-000-000000	242.00
						Check Total	242.00
						Vendor Total	242.00
COMMUNITY BANKS OF COLORADO 110							
	0100004378	02/21/19	02-28-2019_1		2/PAYROLL	9-10-000-00-0000-8102-000-000000	484,000.00
						Check Total	484,000.00
						Vendor Total	484,000.00
CORPORATE TRANSLATION SERVICES, INC 32441							
	0100093614	02/06/19	139457		1/PHONE TRANSLATION	9-10-602-10-0090-0300-000-000000	22.88
						Check Total	22.88
						Vendor Total	22.88
COUGHDROP, INC 34851							
	0100093588	02/01/19	LAKECSD01252018	190254	LICENSE-COUGHDROP ASC, LIFETIME (INCLUDE	9-10-602-12-1700-0610-000-003130	400.00
						Check Total	400.00
						Vendor Total	400.00
CR SUCCESS LEARNING LLC 26972							
	0100093694	02/15/19	1147	190148	PRISM READING PROGRAM	9-22-100-10-0010-0610-000-007377	6,015.50
						Check Total	6,015.50
						Vendor Total	6,015.50
DAMIAN MEDINA 33529							
	0100093712	02/22/19	02-22-2019_4		12/4-2/5 CHROMEBOOK ASST	9-10-602-10-0090-0300-000-000000	66.60
	0100093712	02/22/19	02-22-2019_3		1/9-2/6 STUDENT TUTOR	9-22-602-00-0090-0300-000-005287	111.00
						Check Total	177.60
						Vendor Total	177.60
DAVE ELLERMAN 18457							
	0100093660	02/13/19	02-13-2019_15		FOOD REIM	9-10-720-27-2700-0690-000-000000	15.52
						Check Total	15.52
						Vendor Total	15.52

Vendor	Check Key	Check Date	Invoice No	Po No	Description	Account No	Amount
DCSO Y.E.S.S FOUNDATION		35009					
	0100093763	02/28/19	02-27-2019_8		4/10-4/11 SUICIDE PREV TRNG-JOHNSON	9-10-301-20-2122-0610-000-000000	50.00
						Check Total	50.00
						Vendor Total	50.00
DEPENDABLE AUTO GLASS		23388					
	0100093640	02/08/19	1031150		BUS 11 BUS DOOR GLASS REPLACEMENT	9-10-720-27-2700-0430-000-000000	65.00
						Check Total	65.00
						Vendor Total	65.00
DIETRICH CONSTRUCTION CO		2068					
	0100093615	02/06/19	56319		1/MONTHLY TRASH SERVICE	9-10-710-26-2600-0421-000-000000	1,800.00
						Check Total	1,800.00
						Vendor Total	1,800.00
DISCOUNT SCHOOL SUPPLY		2460					
	0100093661	02/13/19	D67009850101	190260	COLORATIONS CANVAS BACKPACKS-SET OF 12	9-27-971-19-3330-0610-000-008600	358.13
	0100093661	02/13/19	D67009850101	190260	COLORATIONS #2 PENCILS-SET OF 12	9-19-971-00-0040-0610-000-003141	358.12
						Check Total	716.25
						Vendor Total	716.25
DONNA KUSTER		33570					
	0100093745	02/26/19	02-25-2019_3		HOME VISIT MILEAGE REIM	9-27-971-19-3330-0580-000-008600	10.00
						Check Total	10.00
						Vendor Total	10.00
DOUG BRUCE		34860					
	0100093589	02/01/19	02-01-2019_19		FIRST AID COURSE REG REIM	9-10-301-14-1800-0580-000-000000	30.00
						Check Total	30.00
						Vendor Total	30.00
DUNCAN'S HEATING AND COOLING INC		32891					
	0100093764	02/28/19	190735		PITTS FREEZER REPAIR	9-10-710-26-2600-0430-000-000000	450.00
						Check Total	450.00
						Vendor Total	450.00

Vendor Detail Report

Vendor	Check Key	Check Date	Invoice No	Po No	Description	Account No	Amount
EL EDUCATION		23604					
	0100093765	02/28/19	15733		FY19 COOP AGREEMENT-WP	9-10-602-20-2213-0350-000-000000	15,950.00
	0100093765	02/28/19	15732		FY19 COOP AGREEMENT-WP	9-10-602-20-2213-0350-000-000000	950.00
	0100093765	02/28/19	15732		FY19 COOP AGREEMENT-WP	9-22-100-10-0010-0300-000-007377	15,000.00
	0100093765	02/28/19	15808		FY19 COOP AGREEMENT-LCIS	9-10-602-20-2213-0350-000-000000	10,800.00
	0100093765	02/28/19	15717		FY19 COOP AGREEMENT-LCIS	9-10-602-20-2213-0350-000-000000	15,500.00
					Check Total		58,200.00
					Vendor Total		58,200.00
ERIC RUDAT		31917					
	0100093702	02/19/19	02-19-2019_1		ADVANCE	9-10-000-00-0000-8153-000-000000	100.00
					Check Total		100.00
					Vendor Total		100.00
FIDELITY SECURITY LIFE INS COMP		32468					
	0100093766	02/28/19	163818597		3/EYE MED	9-10-000-00-0000-7464-000-000000	691.35
					Check Total		691.35
					Vendor Total		691.35
FLESHER HINTON MUSIC CO.		171					
	0100093662	02/13/19	115036		MALLETS AND CLARINET REEDS	9-10-101-10-1200-0610-000-000000	80.72
	0100093662	02/13/19	116859		CLARINET AND ALTO SAX REEDS	9-10-301-10-1250-0610-000-000000	80.89
					Check Total		161.61
					Vendor Total		161.61
FLEX ACCOUNT ADMINISTRATION AMERICA		3686					
	0100093738	02/26/19	26-FEB-19		PAYROLL LIABILITIES	9-22-000-00-0000-7421-000-000000	341.46
	0100093738	02/26/19	26-FEB-19		PAYROLL LIABILITIES	9-26-000-00-0000-7421-000-000000	27.15
	0100093738	02/26/19	26-FEB-19		PAYROLL LIABILITIES	9-27-000-00-0000-7421-000-000000	163.19
	0100093738	02/26/19	26-FEB-19		PAYROLL LIABILITIES	9-21-000-00-0000-7421-000-000000	3.68
	0100093738	02/26/19	26-FEB-19		PAYROLL LIABILITIES	9-19-000-00-0000-7421-000-000000	84.71
	0100093738	02/26/19	26-FEB-19		PAYROLL LIABILITIES	9-10-000-00-0000-7421-000-000000	164.02
	0100093738	02/26/19	26-FEB-19		PAYROLL LIABILITIES	9-10-000-00-0000-7421-000-000000	2,903.56
	0100093738	02/26/19	26-FEB-19		PAYROLL LIABILITIES	9-22-000-00-0000-7421-000-000000	252.64
					Check Total		3,940.41
					Vendor Total		3,940.41
FORETHOUGHT.NET		33995					
	0100093616	02/06/19	304943		2/INTERNET PROVIDER	9-10-602-10-0090-0531-000-000000	1,250.00
					Check Total		1,250.00
					Vendor Total		1,250.00

Check Date 02/01/19 - 02/28/19

Vendor Detail Report

FMVEN10A

Vendor	Check Key	Check Date	Invoice No	Po No	Description	Account No	Amount	
GABRIEL TOLEDO SEGARRA		34665						
	0100093663	02/13/19	02-13-2019_12		2/8 AND 12/4 INTERPRETER AND TRNG	9-10-602-10-0090-0300-000-000000	34.50	
							Check Total	34.50
							Vendor Total	34.50
GEORGE T. SANDERS CO.		778						
	0100093664	02/13/19	14371403-00		GLYCOL FOR ALL SCHOOLS	9-10-710-26-2600-0610-000-000000	815.01	
							Check Total	815.01
							Vendor Total	815.01
GRAINGER		3709						
	0100093767	02/28/19	9082750218		MAINT REPAIR	9-10-710-26-2600-0430-000-000000	214.18	
	0100093767	02/28/19	9085370444		ALDAZ LAB SUPPLIES	9-10-301-10-1600-0610-000-003120	482.55	
	0100093767	02/28/19	9078049583		ALDAZ LAB SUPPLIES	9-10-301-10-1600-0610-000-003120	121.97	
	0100093767	02/28/19	9086011179		MAINT REPAIR	9-10-710-26-2600-0430-000-000000	81.38	
	0100093767	02/28/19	9085228089		MAINT REPAIR	9-10-710-26-2600-0430-000-000000	165.99	
	0100093767	02/28/19	9080783948		MAINT SUPPLY	9-10-710-26-2600-0610-000-000000	128.60	
	0100093767	02/28/19	9085116383		MAINT SUPPLY	9-10-710-26-2600-0610-000-000000	51.85	
	0100093767	02/28/19	9065815921		MAINT SUPPLY	9-10-710-26-2600-0610-000-000000	147.11	
							Check Total	1,393.63
	0100093786	02/28/19	9087360559		MAINT REPAIR	9-10-710-26-2600-0430-000-000000	188.80	
							Check Total	188.80
							Vendor Total	1,582.43
HAMPTON INN		561						
	0100093617	02/06/19	02-04-2019_28		UNC FUTURE TEACHER CONF STU HOTEL RMS	9-10-301-20-2122-0510-000-000000	358.10	
							Check Total	358.10
							Vendor Total	358.10
HERALD DEMOCRAT		60						
	0100093641	02/08/19	02-08-2019_7		1/BOARD REPORT AD	9-10-601-23-2310-0610-000-000000	146.50	
	0100093641	02/08/19	02-08-2019_7		1/CALENDAR MTG COMMUNITY AD	9-22-602-00-2100-0610-000-004010	718.00	
	0100093641	02/08/19	02-08-2019_7		1/VACANCY ADS	9-10-601-23-2391-0540-000-000000	273.38	
	0100093641	02/08/19	02-08-2019_7		1/PANTHER FOOTBALL THANK YOU AD	9-10-301-14-1800-0610-000-000000	71.80	
							Check Total	1,209.68
							Vendor Total	1,209.68

Vendor Detail Report

Vendor	Check Key	Check Date	Invoice No	Po No	Description	Account No	Amount
HIGH MOUNTAIN PIES		1141					
	0100093642	02/08/19	2259		2/4 POLICY COUNCIL MTG FOOD	9-27-971-19-3330-0500-000-008600	147.78
						Check Total	147.78
						Vendor Total	147.78
HORACE MANN LIFE INSURANCE CO.		211					
	0100093739	02/26/19	26-FEB-19		PAYROLL LIABILITIES	9-10-000-00-0000-7421-000-000000	589.99
	0100093739	02/26/19	26-FEB-19		PAYROLL LIABILITIES	9-22-000-00-0000-7421-000-000000	9.74
						Check Total	599.73
						Vendor Total	599.73
INTERNAL REVENUE SERVICE		838					
	0100004379	02/28/19	02-28-2019_2		2/FIT	9-10-000-00-0000-7472-000-000000	39,731.82
	0100004379	02/28/19	02-28-2019_2		2/FIT	9-10-000-00-0000-7428-000-000000	17,316.28
						Check Total	57,048.10
						Vendor Total	57,048.10
J. STOCKARD FLY FISHING		34126					
	0100093665	02/13/19	ORDER #JS9443805190074		TIEMO TMC 2488 NYMPH FLY HOOK - 100 - SI	9-22-602-00-0090-0610-000-001229	830.55
						Check Total	830.55
						Vendor Total	830.55
J.W. PEPPER OF DALLAS		2091					
	0100093713	02/22/19	13812462		COLLIDING VISIONS	9-10-301-10-1250-0610-000-000000	40.00
	0100093713	02/22/19	13812439		CREATURES IN THE ATTIC	9-10-301-10-1250-0610-000-000000	40.00
						Check Total	80.00
	0100093768	02/28/19	13814586		CHOIR MUSIC	9-10-301-10-1240-0610-000-000000	44.31
						Check Total	44.31
						Vendor Total	124.31
JACQUELINE LUJAN		22012					
	0100093666	02/13/19	02-13-2019_17		CLASSROOM SUPPLY REIM	9-26-971-33-3310-0610-000-000000	8.24
	0100093666	02/13/19	02-13-2019_17		CLASSROOM SUPPLY REIM	9-27-971-19-3330-0610-000-008600	31.60
	0100093666	02/13/19	02-13-2019_17		CLASSROOM SUPPLY REIM	9-19-971-00-0040-0610-000-003141	28.85
						Check Total	68.69
	0100093769	02/28/19	02-27-2019_3		HOME VISIT MILEAGE REIM	9-27-971-19-3330-0580-000-008600	14.50
						Check Total	14.50
						Vendor Total	83.19

Check Date 02/01/19 - 02/28/19

Vendor Detail Report

FMVEN10A

Vendor	Check Key	Check Date	Invoice No	Po No	Description	Account No	Amount
JAMES MEDINA		23930					
	0100093667	02/13/19	02-13-2019_20		FOOD REIM	9-10-720-27-2700-0690-000-000000	7.77
					Check Total		7.77
					Vendor Total		7.77
JAMES POLLOCK		25852					
	0100093668	02/13/19	02-13-2019_24		FOOD REIM	9-10-720-27-2700-0690-000-000000	37.70
	0100093668	02/13/19	02-13-2019_24		WINDOW WASH REIM	9-10-720-27-2700-0610-000-000000	9.31
					Check Total		47.01
					Vendor Total		47.01
JAMIE PETERS		781					
	0100093669	02/13/19	02-13-2019_26		CHSAA CLINIC REIM MILEAGE REIM	9-10-301-14-1800-0320-000-000000	112.00
	0100093669	02/13/19	02-13-2019_26		CHSAA CLINIC REIM	9-10-301-14-1800-0320-000-000000	210.00
					Check Total		322.00
					Vendor Total		322.00
JENNY MASCARENAZ		4319					
	0100093746	02/26/19	02-25-2019_2		HOME VISIT MILEAGE REIM	9-27-971-19-3330-0580-000-008600	16.50
					Check Total		16.50
					Vendor Total		16.50
JESSE KING		32883					
	0100093643	02/08/19	02-08-2019_11		FOOD REIM	9-10-720-27-2700-0690-000-000000	48.13
					Check Total		48.13
	0100093670	02/13/19	02-13-2019_14		FOOD REIM	9-10-720-27-2700-0690-000-000000	27.64
					Check Total		27.64
					Vendor Total		75.77
JOYCE LACOME		5738					
	0100093644	02/08/19	02-08-2019_14		2/8 BUS DRIVER MTG FOOD	9-10-720-27-2700-0610-000-000000	9.51
	0100093644	02/08/19	02-08-2019_14		FOOD REIM	9-10-720-27-2700-0690-000-000000	24.45
					Check Total		33.96
	0100093714	02/22/19	02-22-2019_18		COFFEE FOR BUS BARN	9-10-720-27-2700-0610-000-000000	29.22
					Check Total		29.22
					Vendor Total		63.18

Vendor	Check Key	Check Date	Invoice No	Po No	Description	Account No	Amount
JULIE HAWLEY		31518					
	0100093715	02/22/19	02-22-2019_14		2/8 CPI TRAINING EXP REIM	9-10-602-20-2213-0350-000-000000	92.48
					Check Total		92.48
					Vendor Total		92.48
JULIE MEHLE		143					
	0100093770	02/28/19	02-27-2019_32		2/26 SERVE SAFE WORKSHOP EXP REIM	9-21-740-31-3100-0580-000-000000	38.68
					Check Total		38.68
					Vendor Total		38.68
KAREN JOHNSON		28983					
	0100093695	02/15/19	02-14-2019_2		2/13 21ST CENTURY MTG FOOD REIM	9-22-602-00-2100-0580-000-005287	12.50
	0100093695	02/15/19	02-14-2019_2		2/13 21ST CENTURY MTG FOOD REIM	9-22-100-01-2100-0580-000-005287	12.50
					Check Total		25.00
					Vendor Total		25.00
KARLA ALDER		34398					
	0100093671	02/13/19	02-13-2019_13		12/13-1/31 INTERPRETER	9-10-602-10-0090-0300-000-000000	125.00
					Check Total		125.00
					Vendor Total		125.00
KATHY FITZSIMMONS		2323					
	0100093747	02/26/19	02-25-2019_8		PBIS/MTSS MTG EXP REIM	9-22-602-00-2100-0580-000-003202	91.80
					Check Total		91.80
					Vendor Total		91.80
KBA		7684					
	0100093716	02/22/19	184744	190202	SLIPP-NOTT 15X18" 75 REFILL SHEETS	9-10-301-14-1815-0610-000-000000	324.74
					Check Total		324.74
					Vendor Total		324.74

Vendor	Check Key	Check Date	Invoice No	Po No	Description	Account No	Amount
KELLY HORNING		27030					
	0100093590	02/01/19	02-01-2019_13		CLASSROOM SUPPLY REIM	9-26-971-33-3310-0610-000-000000	9.69
	0100093590	02/01/19	02-01-2019_13		CLASSROOM SUPPLY REIM	9-19-971-00-0040-0610-000-003141	33.93
	0100093590	02/01/19	02-01-2019_13		CLASSROOM SUPPLY REIM	9-27-971-18-3330-0610-000-008600	37.16
						Check Total	<u>80.78</u>
	0100093748	02/26/19	02-25-2019_4		HEADSTART SUPPLY REIM	9-27-971-19-3330-0320-000-008600	41.90
						Check Total	<u>41.90</u>
						Vendor Total	<u>122.68</u>
KELLY MARTINEZ		3509					
	0100093771	02/28/19	02-27-2019_7		2/8-2/9 METRO SP LANG SYMPOSIUM EXP REIM	9-10-602-12-1700-0580-000-003130	162.70
						Check Total	<u>162.70</u>
						Vendor Total	<u>162.70</u>
KERRI QUINLAN		24570					
	0100093749	02/26/19	02-25-2019_7		1/29, 2/20-2/21 MTG EXP REIM	9-22-602-02-2100-0580-000-001208	196.16
						Check Total	<u>196.16</u>
						Vendor Total	<u>196.16</u>
KLAM AMERICA @ DENVER		9829					
	0100093672	02/13/19	8534		BUS 20 REPAIR	9-10-720-27-2700-0430-000-000000	1,900.00
	0100093672	02/13/19	8536		BUS 20 REPAIR	9-10-720-27-2700-0430-000-000000	275.00
						Check Total	<u>2,175.00</u>
						Vendor Total	<u>2,175.00</u>
KONICA MINOLTA		2292					
	0100093618	02/06/19	33020689		2/COPIERS	9-26-971-33-3330-0330-000-000000	705.75
						Check Total	<u>705.75</u>
	0100093673	02/13/19	33049859		1/COPIERS	9-10-602-10-0090-0330-000-000000	5,927.62
	0100093673	02/13/19	33049858		1/COPIERS	9-10-602-10-0090-0330-000-000000	4,523.89
	0100093673	02/13/19	33049858		1/COPIERS	9-27-971-18-3330-0330-000-008600	1,091.27
	0100093673	02/13/19	33049858		1/COPIERS	9-19-971-00-0040-0610-000-003141	1,091.28
						Check Total	<u>12,634.06</u>
						Vendor Total	<u>13,339.81</u>

Vendor Detail Report

Vendor	Check Key	Check Date	Invoice No	Po No	Description	Account No	Amount
KONICA MINOLTA BUSINESS SOL.		4289					
	0100093696	02/15/19	256878881		LCHS COPIER STAPLE KIT	9-10-602-10-0090-0330-000-000000	59.03
						Check Total	59.03
						Vendor Total	59.03
KURT BREWER		22918					
	0100093645	02/08/19	02-08-2019_10		FOOD REIM	9-10-720-27-2700-0690-000-000000	24.78
						Check Total	24.78
	0100093674	02/13/19	02-13-2019_19		FOOD REIM	9-10-720-27-2700-0690-000-000000	24.92
						Check Total	24.92
						Vendor Total	49.70
LAKE COUNTY HEALTH DEPARTMENT		392					
	0100093646	02/08/19	02-08-2019_24		OCT-DEC NURSE SAL/BEN	9-10-602-20-2130-0300-000-009003	10,095.01
	0100093646	02/08/19	02-08-2019_23		JULY-SEPT REVISED NURSE SAL/BEN	9-10-602-20-2130-0300-000-009003	933.67
						Check Total	11,028.68
	0100093717	02/22/19	02-22-2019_9		NEW TEACHER TB TEST	9-26-971-33-3310-0810-000-000000	33.00
						Check Total	33.00
						Vendor Total	11,061.68
LAKE COUNTY LANDFILL		370					
	0100093675	02/13/19	02-13-2019_21		1/DISPOSAL SERVICES	9-10-710-26-2600-0421-000-000000	62.00
						Check Total	62.00
						Vendor Total	62.00
LAKESHORE BASICS AND BEYOND		4234					
	0100093591	02/01/19	4719310119	190238	SIPPY CUPS-SET OF 6	9-27-971-01-3330-0610-000-008600	2,395.79
						Check Total	2,395.79
						Vendor Total	2,395.79

Check Date 02/01/19 - 02/28/19

Vendor Detail Report

FMVEN10A

Vendor	Check Key	Check Date	Invoice No	Po No	Description	Account No	Amount
LAKESHORE LEARNING MATERIALS		4237					
	0100093692	02/14/19	5104700219	190261		9-26-971-33-3310-0610-000-000000	21.32
	0100093692	02/14/19	5104730219	190262	RHYMING SOUNDS PHONEMIC AWARENESS BOX	9-26-971-33-3310-0610-000-000000	176.76
	0100093692	02/14/19	5104730219	190262	LAKESHORE SENSORY BALL SET	9-27-971-19-3330-0610-000-008600	618.65
	0100093692	02/14/19	5104700219	190261		9-27-971-19-3330-0610-000-008600	81.74
	0100093692	02/14/19	5104730219	190262	REAL WORKING CASH REGISTER	9-19-971-00-0040-0610-000-003141	677.57
	0100093692	02/14/19	5104700219	190261	WATER PLAYTUB W/DRAIN	9-19-971-00-0040-0610-000-003141	74.62
						Check Total	1,650.66
						Vendor Total	1,650.66
LCEA		20214					
	0100093740	02/26/19	26-FEB-19		PAYROLL LIABILITIES	9-22-000-00-0000-7421-000-000000	421.26
	0100093740	02/26/19	26-FEB-19		PAYROLL LIABILITIES	9-21-000-00-0000-7421-000-000000	1.14
	0100093740	02/26/19	26-FEB-19		PAYROLL LIABILITIES	9-27-000-00-0000-7421-000-000000	82.15
	0100093740	02/26/19	26-FEB-19		PAYROLL LIABILITIES	9-26-000-00-0000-7421-000-000000	7.75
	0100093740	02/26/19	26-FEB-19		PAYROLL LIABILITIES	9-10-000-00-0000-7421-000-000000	3,141.44
	0100093740	02/26/19	26-FEB-19		PAYROLL LIABILITIES	9-19-000-00-0000-7421-000-000000	3.10
						Check Total	3,656.84
						Vendor Total	3,656.84
LEADVILLE CHAMBER OF COMMERCE		256					
	0100093772	02/28/19	2039		FY19 MEMBERSHIP DUES	9-10-602-10-0090-0810-000-000000	125.00
						Check Total	125.00
						Vendor Total	125.00
LEADVILLE NORDIC		8192					
	0100093592	02/01/19	02-01-2019_16		SNOW MTN RANCH HS/MS NORDIC ENTRY FEE	9-10-301-14-1800-0584-000-000000	300.00
	0100093592	02/01/19	02-01-2019_16		SNOW MTN RANCH HS/MS NORDIC ENTRY FEE	9-10-201-14-1800-0584-000-000000	198.00
						Check Total	498.00
	0100093647	02/08/19	02-08-2019_3		2/2 ASPEN NORDIC ENTRY FEE	9-10-301-14-1800-0584-000-000000	135.00
	0100093647	02/08/19	02-08-2019_3		2/2 ASPEN NORDIC ENTRY FEE	9-10-201-14-1800-0584-000-000000	120.00
						Check Total	255.00
	0100093676	02/13/19	02-13-2019_27		2/9 STEAMBOAT ENTRY FEE	9-10-301-14-1800-0584-000-000000	210.00
	0100093676	02/13/19	02-13-2019_27		2/9 STEAMBOAT ENTRY FEE	9-10-201-14-1800-0584-000-000000	192.00
						Check Total	402.00
						Vendor Total	1,155.00

Check Date 02/01/19 - 02/28/19

Vendor Detail Report

FMVEN10A

Vendor	Check Key	Check Date	Invoice No	Po No	Description	Account No	Amount
LEADVILLE SANITATION DISTRICT		259					
	0100093773	02/28/19	02-27-2019_36		JAN-FEB/SEWER AND SANITATION	9-27-971-19-3330-0620-000-008600	123.89
	0100093773	02/28/19	02-27-2019_36		JAN-FEB/SEWER AND SANITATION	9-10-710-26-2600-0411-000-000000	3,921.71
	0100093773	02/28/19	02-27-2019_36		JAN-FEB/SEWER AND SANITATION	9-26-971-33-3310-0810-000-000000	38.73
	0100093773	02/28/19	02-27-2019_36		JAN-FEB/SEWER AND SANITATION	9-19-971-00-2600-0410-000-003141	108.41
						Check Total	4,192.74
						Vendor Total	4,192.74
LEAH DELYNKO		32662					
	0100093718	02/22/19	02-22-2019_15		2/10-2/13 WIDA TRNG EXP REIM	9-10-602-20-2213-0350-000-000000	176.96
						Check Total	176.96
						Vendor Total	176.96
LEARNING WITHOUT TEARS		6326					
	0100093750	02/26/19	INV11737	190263	CAPITAL LETTER CARDS FOR WOOD PIECES-LAM	9-19-971-00-0040-0610-000-003141	146.17
	0100093750	02/26/19	INV11737	190263	GET SET FOR SCHOO: SING ALONG CD	9-26-971-33-3310-0610-000-000000	41.78
	0100093750	02/26/19	INV11737	190263	MAT FOR WOOD PIECES	9-27-971-19-3330-0610-000-008600	160.09
						Check Total	348.04
						Vendor Total	348.04
LENZKAP PRODUCTIONS, LLC		34614					
	0100093677	02/13/19	02132019_5	190239	VIDEO OF WILDERNESS EXP CLASS	9-22-602-00-2100-0300-000-001229	1,500.00
						Check Total	1,500.00
						Vendor Total	1,500.00
LESLEE TORSELL		21938					
	0100093593	02/01/19	02-01-2019_9		1/30 FOOD, 2/6 MILEAGE FOR MEDICAID MTG	9-10-602-10-0090-0580-000-000000	86.70
						Check Total	86.70
	0100093751	02/26/19	02-25-2019_9		3/4 MEDICAID MTG MILEAGE REIM	9-10-602-10-0090-0580-000-000000	71.70
						Check Total	71.70
						Vendor Total	158.40

Check Date 02/01/19 - 02/28/19

Vendor Detail Report

FMVEN10A

Vendor	Check Key	Check Date	Invoice No	Po No	Description	Account No	Amount
LINDA LEAL		12696					
	0100093719	02/22/19	02-22-2019_10		1/11-2/10 TRAVEL REIM	9-21-740-31-3100-0580-000-000000	17.64
					Check Total		17.64
					Vendor Total		17.64
LINDSAY RAPKE		25704					
	0100093678	02/13/19	02-13-2019_18		HS TRNG EXP REIM	9-27-971-18-3330-0320-000-008600	322.10
					Check Total		322.10
					Vendor Total		322.10
LIONS CLUB		3360					
	0100093697	02/15/19	02-14-2019_4		LCIS COOKING CLUB SUPPLY CARD	9-22-602-00-0090-0610-000-005287	100.00
					Check Total		100.00
	0100093698	02/15/19	02-14-2019_5		LCIS COOKING CLUB SUPPLY CARD	9-22-602-00-0090-0610-000-005287	100.00
					Check Total		100.00
	0100093699	02/15/19	02-14-2019_3		WP COOKING CLUB SUPPLY CARD	9-22-100-01-0010-0610-000-005287	100.00
					Check Total		100.00
					Vendor Total		300.00
LISA RELOU LLC		34894					
	0100093619	02/06/19	INV 320		MASTER PLAN BOND INITIATIVE CONSULTANT	9-43-602-00-4000-0720-000-000000	3,060.00
					Check Total		3,060.00
					Vendor Total		3,060.00
LIZZ HOLM		14443					
	0100093594	02/01/19	02-01-2019_12		CLASSROOM SUPPLY REIM	9-27-971-18-3330-0610-000-008600	3.62
	0100093594	02/01/19	02-01-2019_12		CLASSROOM SUPPLY REIM	9-26-971-33-3310-0610-000-000000	.94
	0100093594	02/01/19	02-01-2019_12		CLASSROOM SUPPLY REIM	9-19-971-00-0040-0610-000-003141	3.31
					Check Total		7.87
					Vendor Total		7.87
MADYSON BLAMEY		34886					
	0100093595	02/01/19	02-01-2019_27		1/28,1/31 COMMUNITY MTG DAYCARE	9-22-602-00-2100-0150-403-004010	44.40
					Check Total		44.40
					Vendor Total		44.40

Check Date 02/01/19 - 02/28/19

Vendor Detail Report

FMVEN10A

Vendor	Check Key	Check Date	Invoice No	Po No	Description	Account No	Amount
MAKAYLA GARZA		34916					
	0100093720	02/22/19	02-22-2019_2		1/15-2/5 RECYCLE CLUB STU LEADER	9-22-602-00-0090-0300-000-005287	33.30
						Check Total	33.30
						Vendor Total	33.30
MAPLETON PUBLIC SCHOOLS		34959					
	0100093721	02/22/19	2018-2019		FY19 OPPORTUNITY COALITION	9-10-602-10-0090-0300-000-000000	1,581.00
						Check Total	1,581.00
						Vendor Total	1,581.00
MARIA ANTONIETA LIZARDO		17922					
	0100093722	02/22/19	02-22-2019_13		1/11-2/10 TRAVEL REIM	9-21-740-31-3100-0580-000-000000	27.58
						Check Total	27.58
						Vendor Total	27.58
MARIAH GARZA		30600					
	0100093723	02/22/19	02-22-2019_12		1/11-2/10 TRAVEL REIM	9-21-740-31-3100-0580-000-000000	2.43
						Check Total	2.43
						Vendor Total	2.43
MARINA CERRONE		34770					
	0100093774	02/28/19	02-27-2019_11		1ST YR COACH, APPLICATION	9-10-301-14-1800-0580-000-000000	104.97
						Check Total	104.97
						Vendor Total	104.97
MARISSA MARTINEZ		21768					
	0100093596	02/01/19	02-01-2019_11		CLASSROOM SUPPLY REIM	9-27-971-18-3330-0610-000-008600	20.03
	0100093596	02/01/19	02-01-2019_11		CLASSROOM SUPPLY REIM	9-19-971-00-0040-0610-000-003141	18.28
	0100093596	02/01/19	02-01-2019_11		CLASSROOM SUPPLY REIM	9-26-971-33-3310-0610-000-000000	5.22
						Check Total	43.53
						Vendor Total	43.53
MARRIOTT COURTYARD DENVER STAPLETON		34991					
	0100093775	02/28/19	02-27-2019_1		3/24-3/26 SPECIAL NEEDS TRNG ROOM	9-10-720-27-2700-0580-000-000000	247.71
						Check Total	247.71
						Vendor Total	247.71

Vendor	Check Key	Check Date	Invoice No	Po No	Description	Account No	Amount
MCI		2960					
	0100093620	02/06/19	02-04-2019_18		1/LONG DISTANCE FAX-ACCT 08660958314	9-10-602-10-0090-0531-000-000000	80.86
						Check Total	<u>80.86</u>
	0100093752	02/26/19	02-25-2019_6		2/HEADSTART FAX ACCT 6P603161	9-27-971-19-3330-0531-000-008600	35.35
						Check Total	<u>35.35</u>
						Vendor Total	<u>116.21</u>
MEADOW GOLD DAIRIES		1343					
	0100093621	02/06/19	02-04-2019_36		1/MILK	9-21-740-31-3100-0631-000-000000	5,705.05
						Check Total	<u>5,705.05</u>
						Vendor Total	<u>5,705.05</u>
MELINA COMPEAN		4321					
	0100093753	02/26/19	02-25-2019_1		HOME VISIT MILEAGE REIM	9-27-971-19-3330-0580-000-008600	40.50
						Check Total	<u>40.50</u>
						Vendor Total	<u>40.50</u>
MICHELE DEWINE		24058					
	0100093622	02/06/19	02-04-2019_3		7/8 STEM SCIENCE SUPPLY REIM	9-10-201-10-1310-0610-000-000000	13.00
						Check Total	<u>13.00</u>
						Vendor Total	<u>13.00</u>
MICHELLE DEUTSCH		35025					
	0100093776	02/28/19	02-27-2019_33		4TH GRADE SUPPLY REIM	9-10-101-24-2410-0610-000-000000	8.90
						Check Total	<u>8.90</u>
						Vendor Total	<u>8.90</u>
MIDWEST BUS SALES, INC		34908					
	0100093648	02/08/19	R060000091:03		BUS 3 REPAIR	9-10-720-27-2700-0430-000-000000	1,808.52
						Check Total	<u>1,808.52</u>
	0100093679	02/13/19	R060000091:01		BUS 3 REPAIR	9-10-720-27-2700-0430-000-000000	1,057.84
						Check Total	<u>1,057.84</u>
						Vendor Total	<u>2,866.36</u>

Check Date 02/01/19 - 02/28/19

Vendor Detail Report

FMVEN10A

Vendor	Check Key	Check Date	Invoice No	Po No	Description	Account No	Amount
MIKE VAGHER		19151					
	0100093680	02/13/19	02-13-2019_2		CHSAA ROUND TABLE MTG MILEAGE REIM	9-10-301-14-1800-0580-000-000000	108.00
						Check Total	108.00
						Vendor Total	108.00
MINETTE NANCE DOSS, EDD,PC		32867					
	0100093623	02/06/19	02-04-2019_10		1/SCHOOL PSYCHOLOGIST	9-10-602-12-1700-0300-000-003130	7,400.00
	0100093623	02/06/19	02-04-2019_10		1/SCHOOL PSYCHOLOGIST MILEAGE	9-10-602-12-1700-0580-000-003130	376.05
						Check Total	7,776.05
						Vendor Total	7,776.05
MOUNTAIN BRD. OF COOP. SERV.		302					
	0100093681	02/13/19	02-13-2019_31		TALBOT-ALTERNATIVE PRINCIPAL TRNG PRGM	9-22-602-00-2100-0300-000-001230	5,000.00
						Check Total	5,000.00
						Vendor Total	5,000.00
NAPA AUTO PARTS OF BUENA VISTA		10871					
	0100093624	02/06/19	02-04-2019_34		1/CHARGES	9-10-710-26-2600-0430-000-000000	525.32
	0100093624	02/06/19	02-04-2019_34		1/CHARGES	9-10-720-27-2700-0430-000-000000	116.23
						Check Total	641.55
						Vendor Total	641.55
NEOPOST USA		9563					
	0100093625	02/06/19	56449635		3/2-6/1 POSTAGE MACH MTR RENTAL AND MAIN	9-10-602-10-0090-0533-000-000000	162.00
						Check Total	162.00
						Vendor Total	162.00
NEWCLOUD NETWORKS		6334					
	0100093626	02/06/19	190310086		1/LOCAL AND LONG DISTANCE	9-10-602-10-0090-0531-000-000000	830.82
						Check Total	830.82
						Vendor Total	830.82

Vendor Detail Report

Vendor	Check Key	Check Date	Invoice No	Po No	Description	Account No	Amount
NEXADENTAL		33405					
	0100093724	02/22/19	0638121-IN	190269	ORAPRO FAZE 2 SPARKLE BRUSH	9-26-971-33-3310-0610-000-000000	5.65
	0100093724	02/22/19	0638121-IN	190269	BANDAID SHEER STRIPS 3/4X3IN 100/BOX	9-27-971-19-3330-0610-000-008600	56.64
	0100093724	02/22/19	0637858-IN	190270	SYNTHETIC VINYL PF GLOVES M SEMPERMED	9-26-971-33-3310-0610-000-000000	10.67
	0100093724	02/22/19	0637473-IN	190269	ORAPRO FAZE 2 SPARKLE BRUSH	9-26-971-33-3310-0610-000-000000	9.12
	0100093724	02/22/19	0637858-IN	190270	DROP SHIP FEE	9-27-971-19-3330-0610-000-008600	40.91
	0100093724	02/22/19	0637473-IN	190269	ORDER 0597226	9-19-971-00-0040-0610-000-003141	51.71
	0100093724	02/22/19	0637858-IN	190270	ORDER 0597228	9-19-971-00-0040-0610-000-003141	37.35
					Check Total		212.05
					Vendor Total		212.05
NOEMI LOPEZ		3562					
	0100093777	02/28/19	02-27-2019_30		HOME VISIT MILEAGE REIM	9-27-971-19-3330-0580-000-008600	14.75
					Check Total		14.75
					Vendor Total		14.75
NORTHERN SPEECH SERVICES		34932					
	0100093754	02/26/19	ORDER #1231653	190278	"R" MADE SIMPLE + COLOR MY CONVERSATION	9-10-201-12-1771-0610-000-003130	197.72
					Check Total		197.72
					Vendor Total		197.72
NORTHWEST POTTERS' SUPPLY LLC		34487					
	0100093725	02/22/19	5409	190177	L&L KILN MODEL E23T ELECTRIC KILN WITH 2	9-43-602-00-4000-0730-000-000000	2,822.00
					Check Total		2,822.00
					Vendor Total		2,822.00
NV5		26050					
	0100093682	02/13/19	115628		MASTER PLAN INVOICE	9-43-602-00-4000-0720-000-000000	1,933.34
					Check Total		1,933.34
					Vendor Total		1,933.34
NWEA		2577					
	0100093726	02/22/19	15355		MAP GROWTH, MATH, READING, AND LANGUAGE	9-10-602-10-0090-0340-000-000000	543.75
					Check Total		543.75
					Vendor Total		543.75

Check Date 02/01/19 - 02/28/19

Vendor Detail Report

FMVEN10A

Vendor	Check Key	Check Date	Invoice No	Po No	Description	Account No	Amount
O'REILLY AUTOMOTIVE, INC		27090					
	0100093627	02/06/19	4790288306		1/CHARGES ACCT 1754362	9-10-710-26-2600-0430-000-000000	11.27
						Check Total	11.27
						Vendor Total	11.27
OPEN UP RESOURCES		32310					
	0100093628	02/06/19	20183635	190016	GRADE 3 MODULE 4 BUNDLE: LANGUAGE ARTS	9-10-602-10-0090-0640-000-000000	797.85
						Check Total	797.85
						Vendor Total	797.85
ORKIN PEST CONTROL		1156					
	0100093597	02/01/19	02-01-2019_4		2/PEST CONTROL ACCT 26054143	9-10-710-26-2600-0300-000-000000	191.53
	0100093597	02/01/19	02-01-2019_5		2/PEST CONTROL ACCT 26054142	9-10-710-26-2600-0300-000-000000	183.97
	0100093597	02/01/19	02-01-2019_2		2/PEST CONTROL ACCT 26049729	9-10-710-26-2600-0300-000-000000	183.27
	0100093597	02/01/19	02-01-2019_1		2/PEST CONTROL ACCT 26049728	9-10-710-26-2600-0300-000-000000	187.37
	0100093597	02/01/19	02-01-2019_3		2/PEST CONTROL ACCT 26058965	9-10-710-26-2600-0300-000-000000	180.56
						Check Total	926.70
						Vendor Total	926.70
PARKVILLE WATER DISTRICT		334					
	0100093629	02/06/19	02-04-2019_20		1/WATER	9-27-971-18-3330-0620-000-008600	22.59
	0100093629	02/06/19	02-04-2019_20		1/WATER	9-26-971-33-3310-0810-000-000000	7.07
	0100093629	02/06/19	02-04-2019_20		1/WATER	9-10-710-26-2600-0411-000-000000	1,369.10
	0100093629	02/06/19	02-04-2019_20		1/WATER	9-19-971-00-2600-0410-000-003141	19.76
						Check Total	1,418.52
	0100093778	02/28/19	02-27-2019_9		2/WATER	9-26-971-33-3310-0810-000-000000	8.86
	0100093778	02/28/19	02-27-2019_9		2/WATER	9-19-971-00-2600-0410-000-003141	24.76
	0100093778	02/28/19	02-27-2019_9		2/WATER	9-10-710-26-2600-0411-000-000000	1,372.83
	0100093778	02/28/19	02-27-2019_9		2/WATER	9-27-971-19-3330-0620-000-008600	28.30
						Check Total	1,434.75
						Vendor Total	2,853.27

Check Date 02/01/19 - 02/28/19

Vendor Detail Report

FMVEN10A

Vendor	Check Key	Check Date	Invoice No	Po No	Description	Account No	Amount
PERA		340					
	0100004382	02/28/19	02-28-2019_5		2/PERA	9-10-000-00-0000-7473-000-000000	169,272.15
						Check Total	169,272.15
	0100004383	02/28/19	02-28-2019_6		2/PERA-HESTER	9-10-000-00-0000-7473-000-000000	106.75
						Check Total	106.75
						Vendor Total	169,378.90
PERA		946					
	0100093683	02/13/19	02-13-2019_29		PERA UNPAID CONTRIBUTIONS	9-10-601-23-2391-0810-000-000000	834.64
						Check Total	834.64
						Vendor Total	834.64
PHEBE CONDON		34509					
	0100093630	02/06/19	02-04-2019_30		SCIENCE SUPPLY REIM	9-10-301-10-1310-0610-000-000000	101.00
						Check Total	101.00
						Vendor Total	101.00
PINNACOL ASSURANCE		454					
	0100093727	02/22/19	19433336		8TH OF 9 INST-WORKERS COMP PREM	9-10-602-28-2850-0521-000-000000	9,834.77
						Check Total	9,834.77
						Vendor Total	9,834.77
POWER EQUIPMENT COMPANY		32557					
	0100093779	02/28/19	S20006646-1		EQUIPMENT REPAIR PARTS	9-10-710-26-2600-0430-000-000000	326.50
						Check Total	326.50
						Vendor Total	326.50
QUILL CORPORATION		539					
	0100093631	02/06/19	4509390		SUPPLIES	9-10-301-10-1600-0610-000-003120	39.99
	0100093631	02/06/19	4574415		SUPPLIES	9-10-301-10-1600-0610-000-003120	87.31
	0100093631	02/06/19	4564153		SUPPLIES	9-10-301-10-1600-0610-000-003120	39.00
						Check Total	166.30
						Vendor Total	166.30
ROCKY MTN. FAMILY PRACTICE		3520					
	0100093780	02/28/19	02-27-2019_4		BUS DRIVER DRUG TEST-BREWER	9-10-720-27-2700-0300-000-000000	29.00
						Check Total	29.00
						Vendor Total	29.00

Vendor	Check Key	Check Date	Invoice No	Po No	Description	Account No	Amount
SAFEWAY INC.		376					
	0100093755	02/26/19	02-25-2019_15		2/CHARGES	9-21-740-31-3100-0630-000-000000	1,044.08
	0100093755	02/26/19	02-25-2019_15		2/CHARGES	9-10-602-10-0090-0610-000-000000	41.93
					Check Total		<u>1,086.01</u>
					Vendor Total		<u>1,086.01</u>
SALLY GLASER		1017					
	0100093781	02/28/19	02-27-2019_2		HOME VISIT MILEAGE REIM	9-27-971-19-3330-0580-000-008600	15.50
					Check Total		<u>15.50</u>
					Vendor Total		<u>15.50</u>
SANGRE DE CRISTO ELECTRIC		382					
	0100093632	02/06/19	02-04-2019_35		1/TWIN LAKES SCHOOLHOUSE	9-10-710-26-2600-0620-000-000000	32.49
					Check Total		<u>32.49</u>
					Vendor Total		<u>32.49</u>
SARAH DIXON		32778					
	0100093684	02/13/19	02-13-2019_6		2/8 CPI TRAINING MILEAGE REIM	9-10-602-20-2213-0350-000-000000	72.20
					Check Total		<u>72.20</u>
					Vendor Total		<u>72.20</u>
SAX VISUAL ART RESOURCES		2759					
	0100093728	02/22/19	308103259046	190274	portfolio red fiber 31x23x2	9-10-301-10-0200-0610-000-000000	296.70
					Check Total		<u>296.70</u>
					Vendor Total		<u>296.70</u>
SCHOLASTIC, INC.		529					
	0100093729	02/22/19	18735723	190264	KINDERGARTEN KIDS:	9-27-971-19-3330-0610-000-008600	127.53
	0100093729	02/22/19	18735723	190264	KINDERGARTEN ES LO ME KINDERGARTEN RULES	9-19-971-00-0040-0610-000-003141	127.53
					Check Total		<u>255.06</u>
					Vendor Total		<u>255.06</u>

Check Date 02/01/19 - 02/28/19

Vendor Detail Report

FMVEN10A

Vendor	Check Key	Check Date	Invoice No	Po No	Description	Account No	Amount
SCHOOL SPECIALTY		4091					
	0100093653	02/08/19	208122333230	190251	PLEASE SEE ONLINE ORDER - CART # 7789511	9-10-101-10-0010-0610-000-000000	54.47
	0100093653	02/08/19	208122299871	190243	PLEASE SEE ONLINE ORDER - CART #77894363	9-10-101-10-0200-0610-000-000000	146.31
						Check Total	200.78
	0100093685	02/13/19	308103256879	190265	CLEAR PACKING TAPE PACK OF 6	9-10-100-10-0010-0610-000-000000	129.58
						Check Total	129.58
	0100093700	02/15/19	208122386133	190272	STAPLER ASCEND RECYCLED BOSB210	9-10-100-10-0010-0610-000-000000	35.91
	0100093700	02/15/19	208122386078	190271	WHITE DRAWING PAPER	9-10-100-10-0200-0610-000-000000	73.97
						Check Total	109.88
						Vendor Total	440.24
SCOTT CARROLL		33162					
	0100093598	02/01/19	02-01-2019_7		1/24-1/26 CMEA EXP REIM	9-10-602-20-2213-0350-000-000000	216.36
						Check Total	216.36
						Vendor Total	216.36
SILVER CITY PRINTING		413					
	0100093633	02/06/19	94104		FILE FOLDERS	9-10-301-10-0030-0610-000-000000	19.88
	0100093633	02/06/19	94112		DO SUPPLIES	9-10-602-10-0090-0610-000-000000	285.69
						Check Total	305.57
	0100093686	02/13/19	94169		TIMESHEETS AND LEAVE REQUEST	9-10-601-25-2510-0550-000-000000	356.15
						Check Total	356.15
	0100093693	02/14/19	94173		INTEROFFICE ENVELOPES	9-10-602-10-0090-0610-000-000000	81.99
						Check Total	81.99
	0100093730	02/22/19	94204		FORMS	9-10-601-25-2510-0550-000-000000	414.35
	0100093730	02/22/19	94154		FOOD SERVICE SUPPLIES	9-21-740-31-3100-0610-000-000000	109.99
						Check Total	524.34
						Vendor Total	1,268.05
SPORTLINE TEAM SPORTS		2693					
	0100093599	02/01/19	CCA018740-DO02		HS GIRLS SOCCER UNIFORMS	9-10-301-14-1826-0610-000-000000	4,025.00
						Check Total	4,025.00
						Vendor Total	4,025.00

Check Date 02/01/19 - 02/28/19

Vendor Detail Report

FMVEN10A

Vendor	Check Key	Check Date	Invoice No	Po No	Description	Account No	Amount
ST. VINCENT GEN. HOSPITAL		901					
	0100093649	02/08/19	3458V16856		DRUG TEST-CDL STUDENT CLASS-BUJANDA	9-10-301-10-0050-0560-000-000000	33.00
	0100093649	02/08/19	129V16856		DRUG TEST-CDL STUDENT CLASS-COOKE	9-10-301-10-0050-0560-000-000000	33.00
Check Total							<u>66.00</u>
Vendor Total							<u>66.00</u>
STAPLES		4758					
	0100093600	02/01/19	8051056585	190061	SEE ATTACHED ORDER	9-19-971-00-0040-0610-000-003141	57.45
	0100093600	02/01/19	8051056585	190062	SEE ATTACHED ORDER	9-19-971-00-0040-0610-000-003141	335.12
	0100093600	02/01/19	8051056585	190061		9-27-971-18-3330-0610-000-008600	325.51
	0100093600	02/01/19	8051056585	190062		9-27-971-18-3330-0610-000-008600	335.12
Check Total							<u>1,053.20</u>
	0100093731	02/22/19	8053305343	190244	SEE ATTACHED ITEMS FOR EARLY HEADSTART	9-27-971-01-3330-0610-000-008600	-449.99
	0100093731	02/22/19	3404816010	190273		9-27-971-19-3330-0610-000-008600	290.79
	0100093731	02/22/19	3404816011	190273		9-27-971-19-3330-0610-000-008600	127.22
	0100093731	02/22/19	8053136091	190244	SEE ATTACHED ITEMS FOR EARLY HEADSTART	9-27-971-01-3330-0610-000-008600	449.99
	0100093731	02/22/19	8052947744	190244	SEE ATTACHED ITEMS FOR EARLY HEADSTART	9-27-971-01-3330-0610-000-008600	1,141.81
	0100093731	02/22/19	3405419165	190273		9-27-971-19-3330-0610-000-008600	182.35
	0100093731	02/22/19	3404816010	190273	SEE ATTACHED ORDER	9-19-971-00-0040-0610-000-003141	106.95
Check Total							<u>1,849.12</u>
Vendor Total							<u>2,902.32</u>
STELLA SALAS		1998					
	0100093782	02/28/19	02-27-2019_31		2/26 SERVE SAFE WORKSHOP MILEAGE REIM	9-21-740-31-3100-0580-000-000000	31.95
Check Total							<u>31.95</u>
Vendor Total							<u>31.95</u>
TANYA LENHARD		7089					
	0100093601	02/01/19	02-01-2019_10		OFFICE SUPPLY REIM	9-27-971-18-3330-0610-000-008600	161.72
	0100093601	02/01/19	02-01-2019_10		OFFICE SUPPLY REIM	9-19-971-00-0040-0610-000-003141	28.54
Check Total							<u>190.26</u>
	0100093634	02/06/19	02-04-2019_8		1/27-1/31 PAT TRAINING EXP REIM	9-27-971-01-3330-0320-000-008600	353.48
Check Total							<u>353.48</u>
Vendor Total							<u>543.74</u>

Check Date 02/01/19 - 02/28/19

Vendor Detail Report

FMVEN10A

Vendor	Check Key	Check Date	Invoice No	Po No	Description	Account No	Amount
THYSSENKRUPP ELEVATOR CORP.		9638					
	0100093687	02/13/19	3004382533		2/1-4/30 ELEVATOR MAINT	9-10-710-26-2600-0300-000-000000	2,226.06
						Check Total	2,226.06
						Vendor Total	2,226.06
TIGER, INC		29874					
	0100093602	02/01/19	1218242815		12/UTILITIES CUST #01627-03	9-10-710-26-2600-0620-000-000000	1,893.33
	0100093602	02/01/19	1218242818		12/UTILITIES CUST #01627-06	9-10-710-26-2600-0620-000-000000	974.30
	0100093602	02/01/19	1218242813		12/UTILITIES CUST #01627-01	9-10-710-26-2600-0620-000-000000	4,096.72
	0100093602	02/01/19	1218242817		12/UTILITIES CUST #01627-05	9-10-710-26-2600-0620-000-000000	1,015.46
	0100093602	02/01/19	1218242816		12/UTILITIES CUST #01627-04	9-10-710-26-2600-0620-000-000000	5,262.40
	0100093602	02/01/19	1218242814		12/UTILITIES CUST #01627-02	9-26-971-33-3310-0810-000-000000	103.59
	0100093602	02/01/19	1218242814		12/UTILITIES CUST #01627-02	9-10-710-26-2600-0620-000-000000	1,346.52
	0100093602	02/01/19	1218242814		12/UTILITIES CUST #01627-02	9-19-971-00-2600-0410-000-003141	290.01
	0100093602	02/01/19	1218242814		12/UTILITIES CUST #01627-02	9-27-971-18-3330-0620-000-008600	331.45
						Check Total	15,313.78
	0100093650	02/08/19	0119246259		1/UTILITIES ACCT 01627-02	9-10-710-26-2600-0620-000-000000	1,312.78
	0100093650	02/08/19	0119246262		1/UTILITIES ACCT 01627-05	9-10-710-26-2600-0620-000-000000	990.78
	0100093650	02/08/19	0119246258		1/UTILITIES ACCT 01627-01	9-10-710-26-2600-0620-000-000000	3,920.39
	0100093650	02/08/19	0119246261		1/UTILITIES ACCT 01627-04	9-10-710-26-2600-0620-000-000000	4,842.06
	0100093650	02/08/19	0119246260		1/UTILITIES ACCT 01627-03	9-10-710-26-2600-0620-000-000000	1,845.65
	0100093650	02/08/19	0119246263		1/UTILITIES ACCT 01627-06	9-10-710-26-2600-0620-000-000000	948.02
	0100093650	02/08/19	0119246259		1/UTILITIES ACCT 01627-02	9-26-971-33-3310-0810-000-000000	101.00
	0100093650	02/08/19	0119246259		1/UTILITIES ACCT 01627-02	9-27-971-18-3330-0620-000-008600	323.14
	0100093650	02/08/19	0119246259		1/UTILITIES ACCT 01627-02	9-19-971-00-2600-0410-000-003141	282.75
						Check Total	14,566.57
						Vendor Total	29,880.35
TIM BEST		29327					
	0100093756	02/26/19	02-25-2019_12		BINS FOR TOYS REIM	9-22-100-01-0010-0610-000-005287	21.38
						Check Total	21.38
						Vendor Total	21.38
TIMOTHY H. BERRY,P.C.		118					
	0100093635	02/06/19	02-04-2019_21		1/CHARGES	9-10-602-10-0090-0300-000-000000	795.00
						Check Total	795.00
						Vendor Total	795.00

Check Date 02/01/19 - 02/28/19

Vendor Detail Report

FMVEN10A

Vendor	Check Key	Check Date	Invoice No	Po No	Description	Account No	Amount
TISCHER TELECOM		34843					
	0100093783	02/28/19	02191901		ALDAZ LAB SUPPLIES	9-10-301-10-1600-0610-000-003120	140.00
						Check Total	140.00
						Vendor Total	140.00
TRACY VINCENT		1948					
	0100093757	02/26/19	02-25-2019_10		2/26 STAFF COFFEE BAR SUPPLY REIM	9-10-101-24-2410-0610-000-000000	85.44
						Check Total	85.44
						Vendor Total	85.44
U.S. FOOD SERVICE, INC. ALLIANT		2117					
	0100093636	02/06/19	02-04-2019_13		1/FOOD	9-21-740-31-3100-0630-000-000000	22,559.04
						Check Total	22,559.04
						Vendor Total	22,559.04
UNLIMITED SANITARY		1202					
	0100093637	02/06/19	5986		10/7 X-COUNTRY PORT-O-LET	9-10-301-14-1800-0610-000-000000	250.00
	0100093637	02/06/19	5985		8/31 X-COUNTRY PORT-O-LET	9-10-301-14-1800-0610-000-000000	500.00
						Check Total	750.00
						Vendor Total	750.00
VERIZON WIRELESS		3373					
	0100093688	02/13/19	9823578306		1/CHARGES	9-27-971-01-3330-0531-000-008600	90.25
	0100093688	02/13/19	9823578306		1/CHARGES BUS PHONES	9-10-602-10-0090-0531-000-000000	150.53
	0100093688	02/13/19	9823578306		1/CHARGES	9-27-971-18-3330-0531-000-008600	52.05
	0100093688	02/13/19	9823578306		1/CHARGES	9-22-602-00-2100-0531-000-001229	62.76
	0100093688	02/13/19	9823578306		1/CHARGES	9-10-602-10-0090-0531-000-000000	2,232.30
						Check Total	2,587.89
						Vendor Total	2,587.89
WAXIE SANITARY SUPPLY		3830					
	0100093784	02/28/19	78058347	190266	SEE ATTACHED MONTHLY CUSTODIAL SUPPLY OR	9-10-710-26-2600-0610-000-000000	54.03
	0100093784	02/28/19	78067920	190266	SEE ATTACHED MONTHLY CUSTODIAL SUPPLY OR	9-10-710-26-2600-0610-000-000000	4,524.37
						Check Total	4,578.40
						Vendor Total	4,578.40

Vendor Detail Report

Vendor	Check Key	Check Date	Invoice No	Po No	Description	Account No	Amount
WELLS FARGO BANK		2437					
	0100093651	02/08/19	1661429		PAYING AGENT FEE	9-10-602-10-0090-0300-000-000000	750.00
	0100093651	02/08/19	1661277		CUSTODIAL FEE	9-10-602-10-0090-0300-000-000000	600.00
					Check Total		1,350.00
					Vendor Total		1,350.00
WEST GRAND HIGH SCHOOL		1834					
	0100093689	02/13/19	02-13-2019_1		5/9 HS TRACK ENTRY FEE	9-10-301-14-1800-0580-000-000000	175.00
					Check Total		175.00
					Vendor Total		175.00
WESTERN SLOPE BAR SUPPLIES		3682					
	0100093652	02/08/19	02-08-2019_1		1/WATER ACCT 34150000	9-10-602-10-0090-0610-000-000000	134.50
	0100093652	02/08/19	02-08-2019_2		1/WATER ACCT LE3747	9-10-720-27-2700-0610-000-000000	24.60
					Check Total		159.10
	0100093732	02/22/19	02-22-2019_22		2/WATER ACCT LE3747	9-10-720-27-2700-0610-000-000000	20.20
	0100093732	02/22/19	02-22-2019_21		2/WATER ACCT 34150000	9-10-602-10-0090-0610-000-000000	101.95
					Check Total		122.15
					Vendor Total		281.25
WOODCRAFT		702					
	0100093690	02/13/19	IV001860669	190236	SPINDLE STEADY REST	9-10-301-10-1000-0610-000-000000	113.04
	0100093690	02/13/19	IV001880327	190236	SPINDLE STEADY REST	9-10-301-10-1000-0610-000-000000	64.17
					Check Total		177.21
	0100093785	02/28/19	IV001902808	190279	CONCEALEAD HINGE JIG,	9-10-301-10-1000-0610-000-000000	29.99
	0100093785	02/28/19	IV001893256	190279	CONCEALEAD HINGE JIG,	9-10-301-10-1000-0610-000-000000	107.97
					Check Total		137.96
					Vendor Total		315.17
XCEL ENERGY		3732					
	0100093603	02/01/19	623632112		1/UTILITIES	9-26-971-33-3310-0810-000-000000	63.77
	0100093603	02/01/19	623632112		1/UTILITIES	9-27-971-18-3330-0620-000-008600	204.01
	0100093603	02/01/19	623632112		1/UTILITIES	9-19-971-00-2600-0410-000-003141	178.51
	0100093603	02/01/19	623632112		1/UTILITIES	9-10-710-26-2600-0620-000-000000	14,490.36
					Check Total		14,936.65
					Vendor Total		14,936.65

Report Date 03/13/19 04:59 PM

Lake County School District R1

Page No 33

Check Date 02/01/19 - 02/28/19

Vendor Detail Report

FMVEN10A

Vendor	Check Key	Check Date	Invoice No	Po No	Description	Account No	Amount
ZACH COFFIN		33340					
	0100093733	02/22/19	02-22-2019_17		FOOD REIM	9-10-720-27-2700-0690-000-000000	38.11
						Check Total	38.11
						Vendor Total	38.11
						Grand Total	1,084,035.29

Cash Flow Financial Report
FY 2018-2019

		<u>Beginning Balance</u>	<u>Activity</u>	<u>Deposits</u>	<u>Ending Balance</u>
Lake County School District					
Operating Account					
	July	\$ 2,489,046.43	\$ 1,306,700.15	\$ 295,027.45	\$ 1,477,373.73
	August	\$ 1,477,373.73	\$ 831,866.69	\$ 535,394.45	\$ 1,180,901.49
	September	\$ 1,180,901.49	\$ 1,356,572.74	\$ 1,175,247.10	\$ 999,575.85
	October	\$ 999,575.85	\$ 1,184,422.24	\$ 1,074,725.57	\$ 889,879.18
	November	\$ 889,879.18	\$ 1,238,240.84	\$ 956,034.64	\$ 607,672.98
	December	\$ 607,672.98	\$ 1,249,047.59	\$ 1,404,569.39	\$ 763,194.78
	January	\$ 763,194.78	\$ 1,103,434.87	\$ 1,407,390.70	\$ 1,067,150.61
	February	\$ 1,067,150.61	\$ 1,158,425.95	\$ 611,674.06	\$ 520,398.72
	March	\$ -	\$ -	\$ -	\$ -
	April	\$ -	\$ -	\$ -	\$ -
	May	\$ -	\$ -	\$ -	\$ -
	June				\$ -
Colostrust Account					
	July	\$ 1,759,152.14	\$ -	\$ 285,107.38	\$ 2,044,259.52
	August	\$ 2,044,259.52	\$ -	\$ 285,701.61	\$ 2,329,961.13
	September	\$ 2,329,961.13	\$ 500,000.00	\$ 285,786.16	\$ 2,115,747.29
	October	\$ 2,115,747.29	\$ 300,000.00	\$ 285,921.85	\$ 2,101,669.14
	November	\$ 2,101,669.14	\$ 500,000.00	\$ 285,410.25	\$ 1,887,079.39
	December	\$ 1,887,079.39	\$ 600,000.00	\$ 290,174.21	\$ 1,577,253.60
	January	\$ 1,577,253.60	\$ -	\$ 290,202.11	\$ 1,867,455.71
	February	\$ 1,867,455.71	\$ -	\$ 290,405.30	\$ 2,157,861.01
	March	\$ -	\$ -	\$ -	\$ -
	April	\$ -	\$ -	\$ -	\$ -
	May	\$ -	\$ -	\$ -	\$ -
	June				\$ -
Payroll Account					
	July	\$ 16,133.75	\$ 417,814.49	\$ 410,000.00	\$ 8,319.26
	August	\$ 8,319.26	\$ 426,683.94	\$ 423,000.00	\$ 4,635.32
	September	\$ 4,635.32	\$ 442,197.18	\$ 450,000.00	\$ 12,438.14
	October	\$ 12,438.14	\$ 465,747.20	\$ 470,000.00	\$ 16,690.94
	November	\$ 16,690.94	\$ 480,903.41	\$ 475,000.00	\$ 10,787.53
	December	\$ 10,787.53	\$ 480,421.76	\$ 480,050.00	\$ 10,415.77
	January	\$ 10,415.77	\$ 463,754.01	\$ 462,000.00	\$ 8,661.76
	February	\$ 8,661.76	\$ 482,627.31	\$ 484,000.00	\$ 10,034.45
	March	\$ -	\$ -	\$ -	\$ -
	April	\$ -	\$ -	\$ -	\$ -
	May	\$ -	\$ -	\$ -	\$ -
	June				\$ -