



# FCI CONSTRUCTORS, INC.

WEST PARK ELEMENTARY

## WEST PARK ELEMENTARY SUPERINTENDENT WEEKLY ACTIVITY REPORT

---

Report Number 26  
Week of 12/05/20 - 12/11/20  
*Superintendents: Austin Liesmer, Larry Yeager*  
*Author: Larry Yeager*



**Site Capture #14**



## CURRENT CONSTRUCTION ACTIVITIES

### Enabling Site Work

- Iron Erection/Fixes @ Area B
- Area A & B Exterior/Interior Framing
- Exterior Sheathing
- MEP Rough-in
- Building Gas Meter Energized
- Ice and Snow Removal/Jobsite Clean-up

## SITE VISITS

- Curtis Morse (Anderson & Hastings)

## CAPTURED PHOTOS



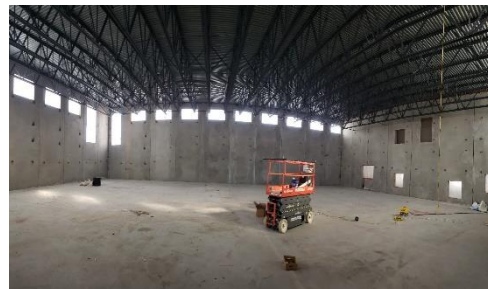
**INTERIOR FRAMING AREA B**



**CANOPY SEAT WALL FORMING**



**EXTERIOR GLU-LAM EVE**



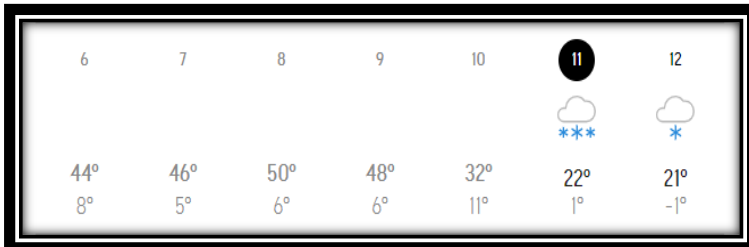
**GYMNASIUM**



## MANPOWER COUNT

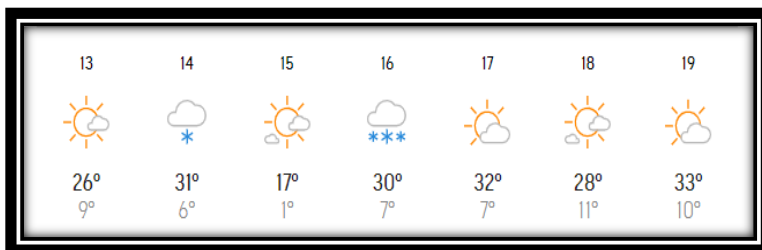
Trade Partners	Responsibility	Manpower Count
FCI Constructors, Inc.	General Contractor	6 FCI, & 13 Temps
Schofield	Site Capture/Earthwork/Utilities	0
RMS Concrete	Form/Pour/Finish	6
Reigles	Rough - in	7
EC Electric	Rough In	4
Iron Industries	Iron Erection/Roof Decking	5
Service West	Framing/Exterior Sheathing	19
Skyline Contractors	Roofing	12
	<b>Total:</b>	

## WEATHER HISTORY



- **Weather days lost this week: 0**
- **Weather days to date: 0**

## FORECASTED WEATHER



## UPCOMING WEATHER FORECAST

- **Colder days and cold nighttime temps predicted**

## SAFETY REPORT

- Lost Time Accidents to Date = **0**
- Accidents This Week = **0**
- Days without lost time = **216**



## **INSPECTIONS/TESTING REPORT**

- All inspection parties present for their responsibilities
  - Concrete Reinforcement (Ground Engineering) - **Ongoing**
  - Concrete Testing (Ground Engineering) - **Ongoing**
  - Electrical (DORA) – **Ongoing**
  - Plumbing (DORA) – **Ongoing**
  - Steel Inspections (Ground Engineering) – **Ongoing**
  - Framing Inspections (Ground Engineering) - **Ongoing**

## **NEXT WEEK'S ACTIVITIES**

- Roofing
- MEP Rough-in
- Snow and Ice Removal/Jobsite Clean-up (Ongoing)
- Temp Power
- Canopy/Seat Wall Form & Pour
- Kitchen/Music Room Stair Walls Form & Pour
- Interior Framing (Area B)