



FCI CONSTRUCTORS, INC.

WEST PARK ELEMENTARY

WEST PARK ELEMENTARY SUPERINTENDENT WEEKLY ACTIVITY REPORT

Report Number 29
Weeks of 12/19/20 – 1/2/21
Superintendents: Austin Liesmer, Larry Yeager
Author: Larry Yeager



Site Capture #16



CURRENT CONSTRUCTION ACTIVITIES

Enabling Site Work

- Area A & B Exterior/Interior Framing
- Exterior Sheathing
- MEP Rough-in
- Upper Drywall
- Roofing @ Area B
- Interior Backing Area B
- Diamond Pour Back, Canopy Foundations
- In Wall Backing
- Transformer Swap

SITE VISITS

- Kaitlin Laughlin (IMEG, Electrical Site Walk)

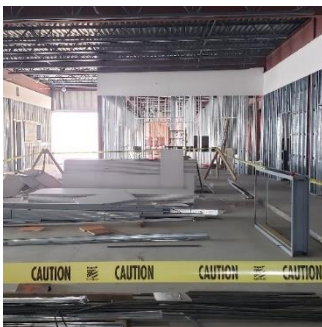
CAPTURED PHOTOS



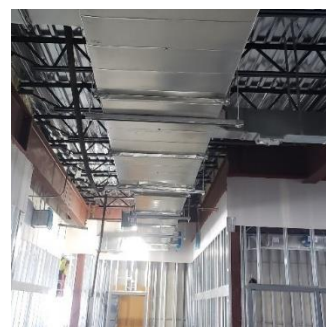
MECHANICAL MEZZANINE



CORRIDOR H 115 LOOKING WEST



ECE PLAY AREA FRAMING



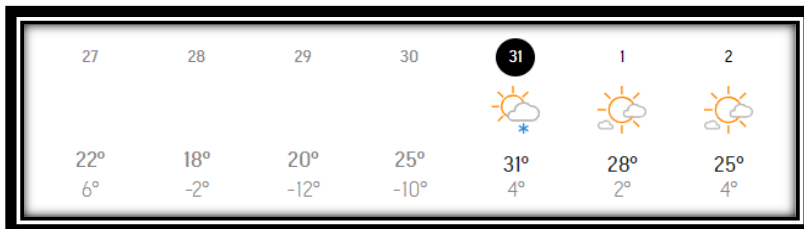
CORRIDOR LOOKING WEST AREA B



MANPOWER COUNT

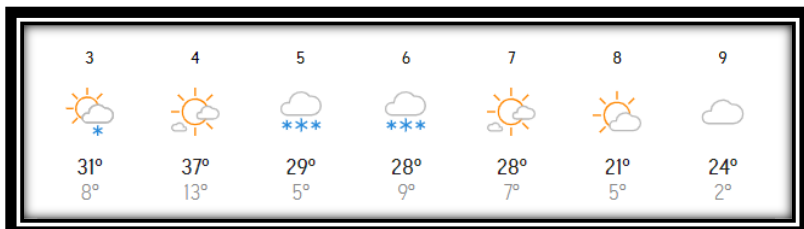
Trade Partners	Responsibility	Manpower Count
FCI Constructors, Inc.	General Contractor	8 FCI, & 8 Temps
Schofield	Site Capture/Earthwork/Utilities	0
RMS Concrete	Form/Pour/Finish	6
Reigles	Rough - in	12
EC Electric	Rough In	6
Iron Industries	Iron Erection/Roof Decking	3
Service West	Framing/Exterior Sheathing	16
Skyline Contractors	Roofing	11
	Total:	70

WEATHER HISTORY



- Weather days lost this week: 0
- Weather days to date: 0

FORECASTED WEATHER



UPCOMING WEATHER FORECAST

- Snow forecasted for Tuesday & Wednesday

SAFETY REPORT

- Lost Time Accidents to Date = 0
- Accidents This Week = 0
- Days without lost time = 237



INSPECTIONS/TESTING REPORT

- All inspection parties present for their responsibilities
 - Concrete Reinforcement (Ground Engineering) - **Ongoing**
 - Concrete Testing (Ground Engineering) - **Ongoing**
 - Electrical (DORA) – **Ongoing**
 - Plumbing (DORA) – **Ongoing**
 - Steel Inspections (Ground Engineering) – **Ongoing**
 - Framing Inspections (Ground Engineering) - **Ongoing**

NEXT WEEK'S ACTIVITIES

- Roofing
- MEP Rough-in
- Canopy Foundation Backfill
- Interior Framing (Area B)
- Upper Drywall
- Glu-Lam Canopy Framing
- Interior Pre-Cast Patching