

West Park Elementary Project Progress Update #12 December 8th, 2020

Overall Schedule

- Design: Fall 2019 – Summer 2020
- Construction: Summer 2020 – Fall/Winter 2021

Overall Budget

Total Budget	Amount Committed	Spent to Date	Est. Local Expenditures
\$34,676,114	\$30,682,104	\$8,431,168	\$96,960

Team

- Owners Rep – Dynamic Program Management (DPM)
- Architect – Hord Coplan Macht (HCM)
- Construction Contractor – FCI Constructors
- Commissioning Agent – PCD Engineering
- Environmental Consultant – Weecycle Environmental
- Abatement Contractor - Earth Services & Abatement
- Construction Material & 3rd Party Testing – Ground Engineering
- Traffic Consultant – McDowell Engineering
- Furniture, Fixtures, & Equipment Procurement – BCInteriors

Recently Completed

- **Construction**
 - o Admin Area exterior wall layout and framing
 - o Gym stairway walls form and pour
 - o Gym membrane roofing install
 - o Gym precast grouting
 - o Roof framing
 - o Glulam beam installation

In Progress

- **Design**
 - o Coordination with utility providers and local AHJs
 - o Furniture design on-going
- **Budget**
 - o Exec Comm continuing to review Add Alternates per decision schedule
 - o FCI pricing final snowmelt scope

- **Construction**
 - Roof membrane installation
 - Mechanical, Electrical, and Plumbing Rough-In

Upcoming

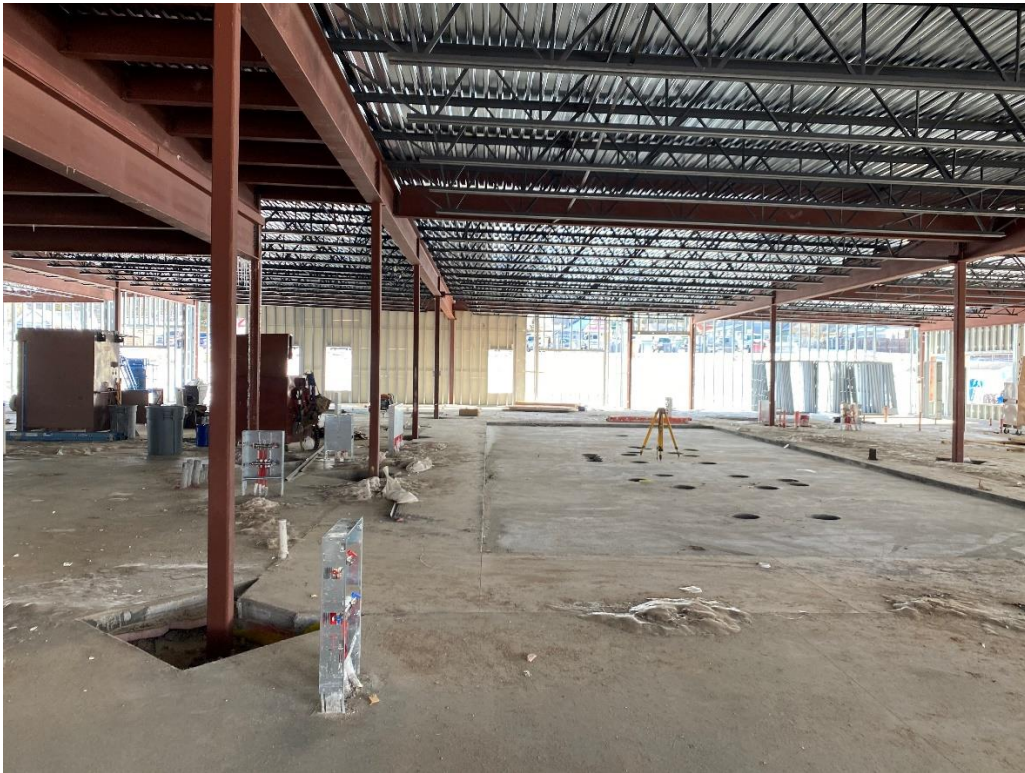
- **Procurement**
 - Technology – facilitated by LCSD & DPM
 - Moving Company – facilitated by DPM (for summer 2021)
 - Furniture Donation in Spring 2021 at the completion of the school year
- **Construction**
 - Building dry-in
- **Abatement**
 - Abatement and demolition of existing West Park Elementary School Facility to occur summer/fall 2021

PHOTOS

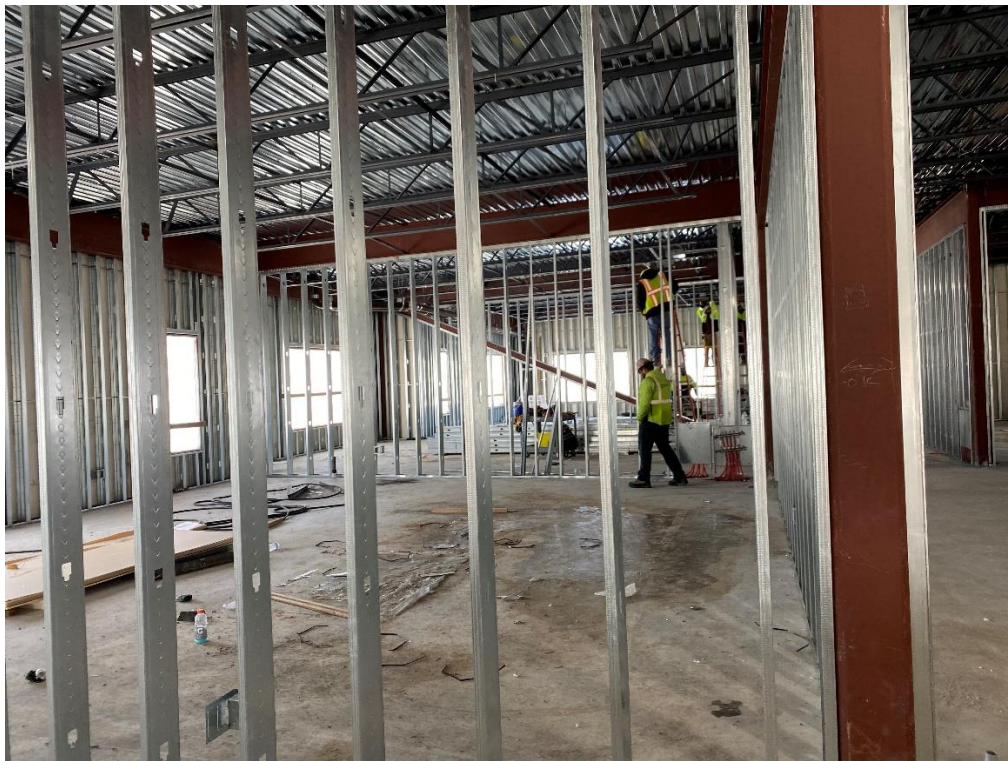
On following pages



12/1/2020 – Interior of Gym facing stage opening



12/1/20 – Interior PK Play Area



12/1/2020 – Interior framing