



# FCI CONSTRUCTORS, INC.

WEST PARK ELEMENTARY

## WEST PARK ELEMENTARY SUPERINTENDENT WEEKLY ACTIVITY REPORT

---

Report Number 33  
Weeks of 1/23/21 – 1/29/21  
*Superintendents: Austin Liesmer, Larry Yeager*  
*Author: Larry Yeager*



**SITE CAPTURE #20**

## CURRENT CONSTRUCTION ACTIVITIES

### Enabling Site Work

- Interior Framing
- MEP Rough-in
- Roofing @ Area A/B
- In Wall Backing
- Fire Suppression Rough-in
- Tape and Finish Drywall Area A
- Acoustic Insulation
- Brick Veneer

### SITE VISITS

- Kaitlin M. Laughlin w/IMEG

## CAPTURED PHOTOS



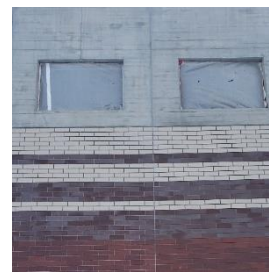
**BRICK VENEER @ UTILITY YARD**



**MEDIA CENTER FRAMING**



**GANG RESTROOMS PRE-FAB PLUMBING**



**INTERIOR/EXTERIOR JOINT SEALING @ GYM**



## MANPOWER COUNT

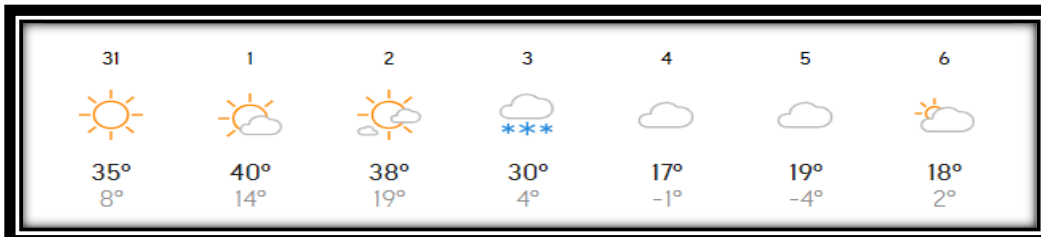
Trade Partners	Responsibility	Manpower Count
FCI Constructors, Inc.	General Contractor	9 FCI, & 1 Temp
Schofield	Site Capture/Earthwork/Utilities	0
RMS Concrete	Site Concrete	0
Reigles	Plumbing & Mechanical	18
EC Electric	Electrical	12
Iron Industries	Iron Erection/Roof Decking	0
Service West	Framing	20
Skyline Contractors	Roofing	10
Concrete Visions	Floor Polishing	0
Stresscon	Precast Panels	0
Swat Group	Radon	0
Excel Fire Protection	Fire Suppression	2
ASCO Construction, LLC	Brick Veneer/Masonry	6
Summit Sealants	Sealants/Caulking	5
	<b>TOTAL:</b>	<b>83</b>

## WEATHER HISTORY



- Weather days lost this week: 0
- Weather days to date: 0

## FORECASTED WEATHER



## UPCOMING WEATHER FORECAST

- Warmer daytime temperatures thru midweek, leading to colder week ending daytime highs.



## **SAFETY REPORT**

- Lost Time Accidents to Date = **0**
- Accidents This Week = **0**
- Days without lost time = **265**

## **INSPECTIONS/TESTING REPORT**

- All inspection parties present for their responsibilities
  - Concrete Reinforcement (Ground Engineering) - **Ongoing**
  - Concrete/Asphalt Testing (Ground Engineering) – **Ongoing**
  - Mechanical (Ground Engineering) - **Ongoing**
  - Electrical (DORA) – **Ongoing**
  - Plumbing (DORA) – **Ongoing**
  - In Floor Heat/Snow Melt (Ground Engineering) - **Ongoing**
  - Steel Inspections (Ground Engineering) – **Ongoing**
  - Roofing (Ground Engineering) – **Ongoing**
  - Framing Inspections (Ground Engineering) – **Ongoing**
  - Envelope Tightness (PCD Engineering) – **Ongoing**
  - Exterior Insulation (Ground Engineering) – **Ongoing**
  - Duct Inspection (Ground Engineering) - **Ongoing**

## **NEXT WEEK'S ACTIVITIES**

- Roofing
- MEP Rough-in
- Interior Framing Area A/B
- Hang/Tape/Finish Drywall Area A/B
- Frame Hard Lids & Soffits
- Fire Suppression Rough-in
- Acoustic Insulation
- Set Window Frames/Glazing
- Exterior Insulation/Brick Veneer