



FCI CONSTRUCTORS, INC.
WEST PARK ELEMENTARY

WEST PARK ELEMENTARY
SUPERINTENDENT WEEKLY ACTIVITY REPORT

Report Number 31
Weeks of 1/9/21 – 1/15/21
Superintendents: Austin Liesmer, Larry Yeager
Author: Larry Yeager



SITE CAPTURE #18

CURRENT CONSTRUCTION ACTIVITIES

Enabling Site Work

- Interior Framing
- MEP Rough-in
- Upper Drywall
- Roofing @ Area A/B
- In Wall Backing
- Floor Grinding (Slurry Coat)
- Lower Drywall Area A

SITE VISITS

- No site visits were scheduled

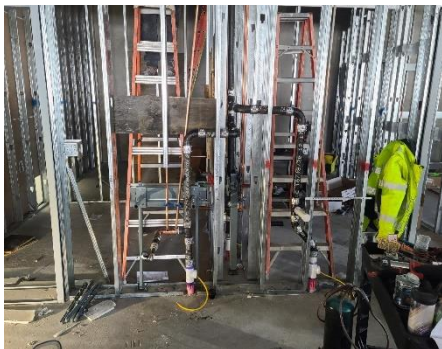
CAPTURED PHOTOS



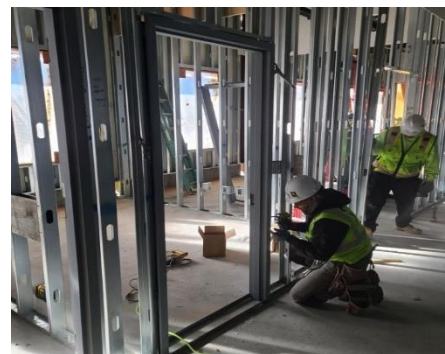
AREA A CORRIDOR DRYWALL & DUCT



CANOPY FRAMING COMPLETE



RESTROOM PLUMBING ROUGH - IN



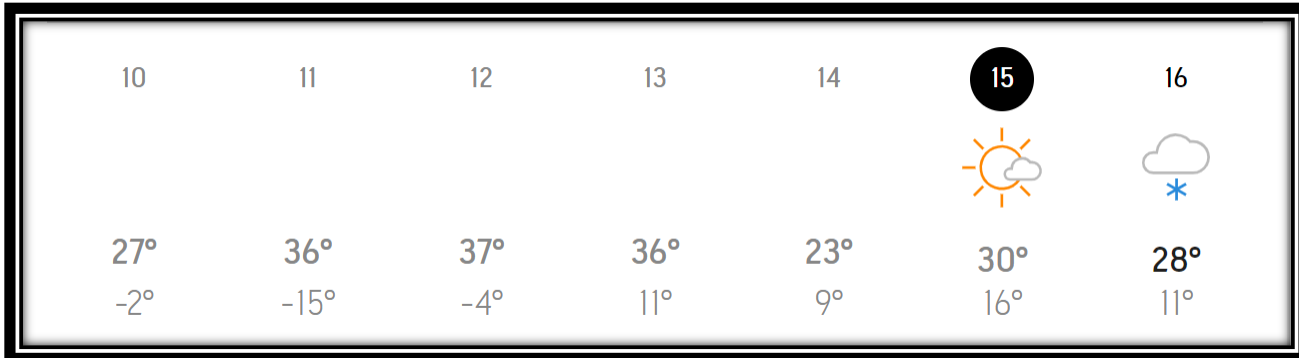
DOOR FRAME INSTALL



MANPOWER COUNT

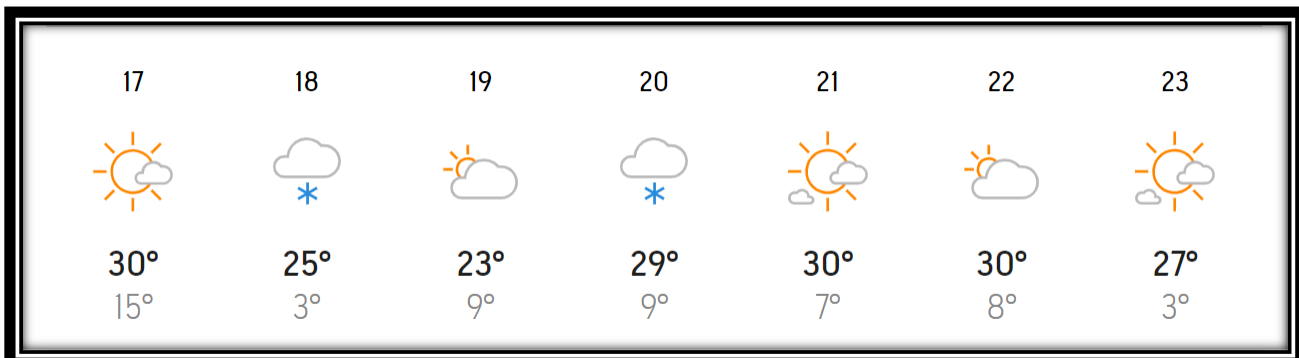
Trade Partners	Responsibility	Manpower Count
FCI Constructors, Inc.	General Contractor	8 FCI, & 5 Temps
Schofield	Site Capture/Earthwork/Utilities	0
RMS Concrete	Site Concrete	0
Reigles	Plumbing & Mechanical	13
EC Electric	Electrical	11
Iron Industries	Iron Erection/Roof Decking	0
Service West	Framing	20
Skyline Contractors	Roofing	9
Concrete Visions	Floor Polishing	4
Stresscon	Precast Panels	2
	TOTAL:	72

WEATHER HISTORY



- Weather days lost this week: **0**
- Weather days to date: **0**

FORECASTED WEATHER



UPCOMING WEATHER FORECAST

- Single digit nighttime temperatures



SAFETY REPORT

- Lost Time Accidents to Date = **0**
- Accidents This Week = **0**
- Days without lost time = **251**

INSPECTIONS/TESTING REPORT

- All inspection parties present for their responsibilities
 - Concrete Reinforcement (Ground Engineering) - **Ongoing**
 - Concrete/Asphalt Testing (Ground Engineering) – **Ongoing**
 - Mechanical (Ground Engineering) - **Ongoing**
 - Electrical (DORA) – **Ongoing**
 - Plumbing (DORA) – **Ongoing**
 - In Floor Heat/Snow Melt (Ground Engineering) - **Ongoing**
 - Steel Inspections (Ground Engineering) – **Ongoing**
 - Roofing (Ground Engineering) – **Ongoing**
 - Framing Inspections (Ground Engineering) – **Ongoing**
 - Envelope Tightness (PCD Engineering) – **Ongoing**

NEXT WEEK'S ACTIVITIES

- Roofing
- MEP Rough-in
- Interior Framing Area A/B
- Interior Drywall Area A
- Upper Drywall Area B
- Canopy Roof Decking
- Acoustic Insulation
- Slurry Coat on Polished Floor Areas
- Fire Suppression Install