



FCI CONSTRUCTORS, INC.

WEST PARK ELEMENTARY

WEST PARK ELEMENTARY SUPERINTENDENT WEEKLY ACTIVITY REPORT

Report Number 35
Weeks of 2/6/21 – 2/12/21
Superintendents: Austin Liesmer, Larry Yeager
Author: Larry Yeager



SITE CAPTURE #22

CURRENT CONSTRUCTION ACTIVITIES

Enabling Site Work

- Interior Framing
- MEP Rough-in
- Roofing @ Area A/B
- In Wall Backing
- Fire Suppression Rough-in
- Tape and Finish Drywall Area A
- Acoustic Insulation
- Brick Veneer
- Window Frame Install

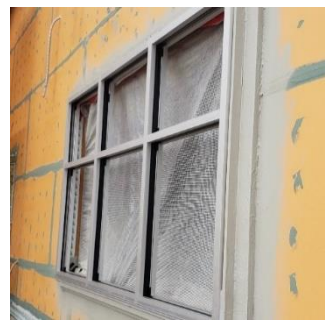
SITE VISITS

- BOE tour
- John Hemsley, Ben Graham w/PCD Engineering (CX Kick-off Meeting)

CAPTURED PHOTOS



BRICK VENEER @ UTILITY YARD



WINDOW FRAME INSTALL



COMMONS SOFFIT FRAMING



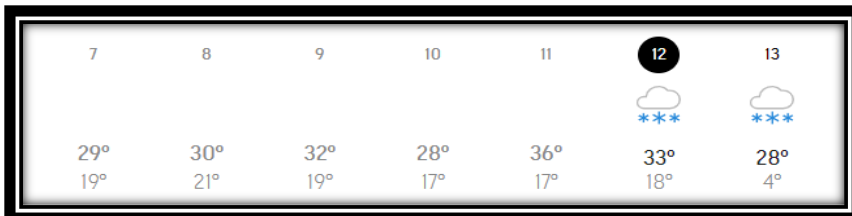
BRICK ANIMAL CONSERVATION



MANPOWER COUNT

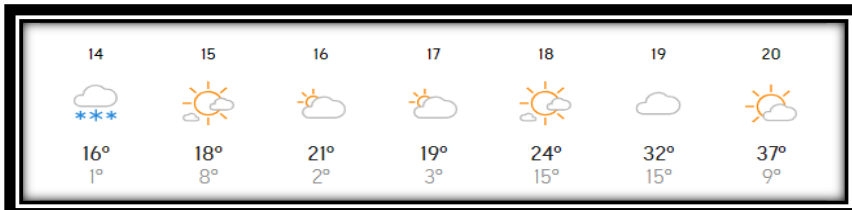
| Trade Partners | Responsibility | Manpower Count |
|------------------------|----------------------------------|-----------------|
| FCI Constructors, Inc. | General Contractor | 9 FCI, & 1 Temp |
| Schofield | Site Capture/Earthwork/Utilities | 0 |
| RMS Concrete | Site Concrete | 0 |
| Reigles | Plumbing & Mechanical | 23 |
| EC Electric | Electrical | 13 |
| Iron Industries | Iron Erection/Roof Decking | 0 |
| Service West | Framing | 10 |
| Skyline Contractors | Roofing | 0 |
| Concrete Visions | Floor Polishing | 0 |
| Stresscon | Precast Panels | 3 |
| Swat Group | Radon | 0 |
| Excel Fire Protection | Fire Suppression | 4 |
| ASCO Construction, LLC | Brick Veneer/Masonry | 10 |
| Summit Sealants | Sealants/Caulking | 0 |
| Innovative Painting | Finish Painting | 1 |
| | TOTAL: | 74 |

WEATHER HISTORY



- Weather days lost this week: 0
- Weather days to date: 0

FORECASTED WEATHER



UPCOMING WEATHER FORECAST

- More snow over the weekend. Fourteen inches predicted with colder daytime highs throughout the week.

SAFETY REPORT

- Lost Time Accidents to Date = 0
- Accidents This Week = 0
- Days without lost time = 279

INSPECTIONS/TESTING REPORT

- All inspection parties present for their responsibilities
 - Concrete Reinforcement (Ground Engineering) - **Ongoing**
 - Concrete/Asphalt Testing (Ground Engineering) – **Ongoing**
 - Mechanical (Ground Engineering) - **Ongoing**
 - Electrical (DORA) – **Ongoing**
 - Plumbing (DORA) – **Ongoing**
 - In Floor Heat/Snow Melt (Ground Engineering) - **Ongoing**
 - Steel Inspections (Ground Engineering) – **Ongoing**
 - Roofing (Ground Engineering) – **Ongoing**
 - Framing Inspections (Ground Engineering) – **Ongoing**
 - Envelope Tightness (PCD Engineering) – **Ongoing**
 - Exterior Insulation (Ground Engineering) – **Ongoing**
 - Duct Inspection (Ground Engineering) - **Ongoing**

NEXT WEEK'S ACTIVITIES

- Roofing
- MEP Rough-in
- Low Volt Rough-in
- Seal Wall Penetrations
- Interior Framing Area A/B
- Hang/Tape/Finish Drywall Area A/B
- Frame Hard Lids & Soffits
- Hard Lid Rough-in
- Fire Suppression Rough-in
- Acoustic Insulation Area B
- Set Window Frames/Glazing
- Drywall Window Returns
- Exterior Insulation/Brick Veneer