



FCI CONSTRUCTORS, INC.

WEST PARK ELEMENTARY

WEST PARK ELEMENTARY SUPERINTENDENT WEEKLY ACTIVITY REPORT

Report Number 39
Weeks of 3/06/21 – 3/12/21
Superintendents: Austin Liesmer, Larry Yeager
Author: Larry Yeager



SITE CAPTURE #26

CURRENT CONSTRUCTION ACTIVITIES

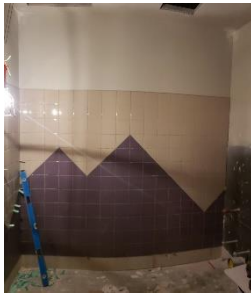
Enabling Site Work

- MEP Rough-in
- Fire Suppression Rough-in
- Tape and Finish Drywall Area B
- Acoustic Insulation
- Pipe Insulation
- Brick Veneer
- Window Frame/Glazing Install
- Interior Prime and Paint
- Low Volt Rough-in
- Classroom Grid Ceiling Install
- Basement/Crawlspace Insulation
- Addition Ground Thawing

SITE VISITS

- No site visits were scheduled.

CAPTURED PHOTOS



RESTROOM TILE



CANOPY DECKING



COMMONS TO KITCHEN



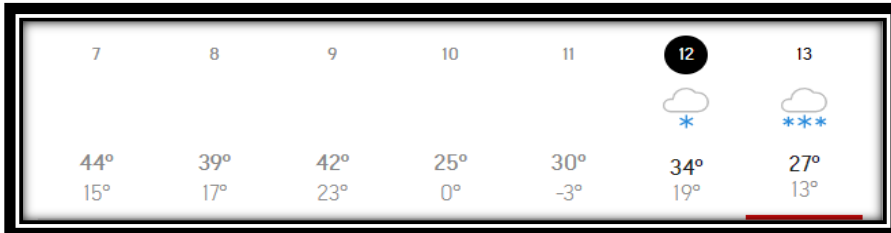
BRICK VENEER @ BASEMENT



MANPOWER COUNT

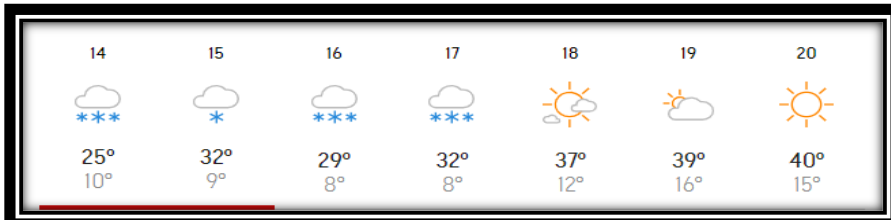
Trade Partners	Responsibility	Manpower Count
FCI Constructors, Inc.	General Contractor	9
RMS Concrete	Site Concrete	8
Reigles	Plumbing & Mechanical	23
EC Electric	Electrical	16
Service West	Framing	16
Fontaine Design Group	Metal Siding	3
Excel Fire Protection	Fire Suppression	3
ASCO Construction, LLC	Brick Veneer/Masonry	14
Innovative Painting	Painting	4
Eagle Valley Glass	Glazing	2
Accurate Insulation	Building Insulation	5
Skyline Contractors	Roofing	2
	TOTAL:	105

WEATHER HISTORY



- Weather days lost this week: 0
- Weather days to date: 0

FORECASTED WEATHER



UPCOMING WEATHER FORECAST

- Winter storm warning through Monday. Heavy amounts of snow predicted.

SAFETY REPORT

- Lost Time Accidents to Date = **0**
- Accidents This Week = **0**
- Days without lost time = **307**

INSPECTIONS/TESTING REPORT

- All inspection parties present for their responsibilities.
- Concrete Reinforcement (Ground Engineering) - **Ongoing**
- Concrete/Asphalt Testing (Ground Engineering) – **Ongoing**
- Mechanical (Ground Engineering) - **Ongoing**
- Electrical (DORA) – **Ongoing**
- Plumbing (DORA) – **Ongoing**
- In Floor Heat/Snow Melt (Ground Engineering) - **Ongoing**
- Steel Inspections (Ground Engineering) – **Ongoing**
- Roofing (Ground Engineering) – **Ongoing**
- Framing Inspections (Ground Engineering) – **Ongoing**
- Envelope Tightness (PCD Engineering) – **Ongoing**
- Exterior Insulation (Ground Engineering) – **Ongoing**
- Duct Inspection (Ground Engineering) – **Ongoing**
- Fire Suppression (Leadville Fire) - **Ongoing**

NEXT WEEK'S ACTIVITIES

- MEP Rough-in
- Low Volt Rough-in
- Seal Wall Penetrations
- Hang/Tape/Finish Drywall Area B
- Frame Hard Lids & Soffits
- Hard Lid Rough-in
- Fire Suppression Rough-in
- Acoustic Insulation Area B
- Exterior Insulation/Brick Veneer
- Interior Prime and Paint
- Casework Install
- Classroom Grid Ceiling Install
- Basement/Crawlspace Insulation
- Restroom Wall Tile
- Entry Canopy Decking
- Addition Underground Storm Drain Re-route