



FCI CONSTRUCTORS, INC.

WEST PARK ELEMENTARY

WEST PARK ELEMENTARY SUPERINTENDENT WEEKLY ACTIVITY REPORT

Report Number 45
Weeks of 4/24/21 – 4/30/21
Superintendents: Austin Liesmer, Larry Yeager
Author: Larry Yeager



SITE CAPTURE #32

CURRENT CONSTRUCTION ACTIVITIES

Enabling Site Work

- MEP Rough-in/Trim
- Site Sub-grade Prep
- Floor Polishing
- AV/Markerboards
- Gym Windows
- Fire Suppression Rough-in
- Tape and Finish Drywall Area B/Commons
- Pipe/Duct Insulation
- Brick Veneer
- Interior Prime and Paint
- Wall Tile Install
- Low Volt Rough-in
- Classroom Grid Ceiling Install
- Addition Foundation Backfill
- Resilient Flooring

SITE VISITS

- Best Building Tours

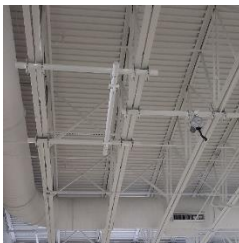
CAPTURED PHOTOS



ADMIN CASEWORK INSTALL



OUTDOOR LEARNING FENCE POST INSTALL



GYM EQUIPMENT INSTALL



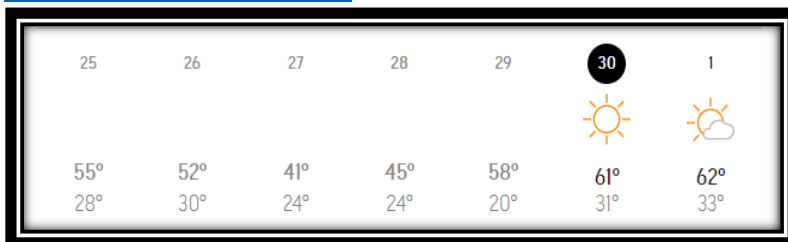
WEST END OF SCHOOL



MANPOWER COUNT

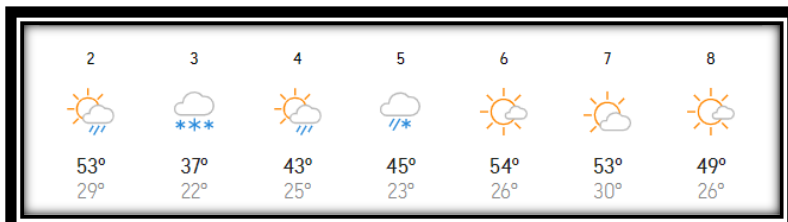
Trade Partners	Responsibility	Manpower Count
FCI Constructors, Inc.	General Contractor	7/2 temps
Schofield	Excavation	7
Reigles	Plumbing & Mechanical	20
EC Electric	Electrical	26
Service West	Framing/Drywall/Grid Ceilings	6
Colorado Floorworks	Tile	4
Concrete Visions	Floor Polishing	2
Excel Fire Protection	Fire Suppression	2
ASCO Construction, LLC	Brick Veneer/Masonry	14
Mike Harmeling Construction Services	Doors/Hardware	2
Innovative Painting	Painting	2
Sidney Millworks	Casework	3
Eagle Valley Glass and Mirror	Glazing	4
Omni Tech Industries	Resinous Flooring	2
Powers Products Company	Gymnasium Glazing	2
Iron Industries	Steel Install	2
FDG Products	Metal Panels	5
	TOTAL:	100

WEATHER HISTORY



- Weather days lost this week: 0
- Weather days to date: 0

FORECASTED WEATHER



UPCOMING WEATHER FORECAST

- Warmer daytime temps with afternoon thunderstorms possible.



SAFETY REPORT

- Lost Time Accidents to Date = **0**
- Accidents This Week = **0**
- Days without lost time = **363**

INSPECTIONS/TESTING REPORT

- **All inspection parties present for their responsibilities.**
- Concrete Reinforcement (Ground Engineering) - **Ongoing**
- Concrete/Asphalt Testing (Ground Engineering) – **Ongoing**
- Mechanical (Ground Engineering) - **Ongoing**
- Electrical (DORA) – **Ongoing**
- Plumbing (DORA) – **Ongoing**
- In Floor Heat/Snow Melt (Ground Engineering) - **Ongoing**
- Steel Inspections (Ground Engineering) – **Ongoing**
- Roofing (Ground Engineering) – **Ongoing**
- Framing Inspections (Ground Engineering) – **Ongoing**
- Envelope Tightness (PCD Engineering) – **Ongoing**
- Exterior Insulation (Ground Engineering) – **Ongoing**
- Duct Inspection (Ground Engineering) – **Ongoing**
- Fire Suppression (Leadville Fire) - **Ongoing**

NEXT WEEK'S ACTIVITIES

- MEP Rough-in/Trim
- Addition Underground
- Operable Window Install
- Low Volt Rough-in
- Hang/Tape/Finish Drywall Area B
- Fire Suppression Rough-in
- Concrete Floor Polishing
- Exterior Insulation/Brick Veneer
- Interior Prime and Paint
- Casework Install
- Classroom Grid Ceiling Install
- Civil Site Prep
- MEP Trim
- Specialties Install