



FCI CONSTRUCTORS, INC.

WEST PARK ELEMENTARY

WEST PARK ELEMENTARY SUPERINTENDENT WEEKLY ACTIVITY REPORT

Report Number 47
Weeks of 5/8/21 – 5/14/21
Superintendents: Austin Liesmer, Larry Yeager
Author: Larry Yeager



SITE CAPTURE #34

CURRENT CONSTRUCTION ACTIVITIES

Enabling Site Work

- MEP Rough-in/Trim
- Site Sub-grade Prep
- Floor Polishing
- AV/Markerboards
- Gym Windows
- Fire Suppression Trim
- Tape and Finish Drywall Area B/Commons
- Pipe/Duct Insulation
- Brick Veneer
- Ceiling Tile Drop
- Interior Prime and Paint
- Wall Tile/Carpet Install
- Low Volt Rough-in
- Classroom Grid Ceiling Install
- Addition Plumbing Underground
- Exterior Snowmelt Main Line Install

SITE VISITS

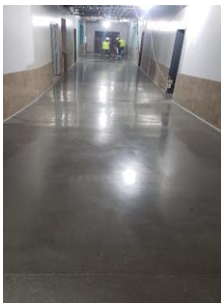
- No Visits Scheduled

CAPTURED PHOTOS



CURB AND GUTTER FORMING ON 12TH

CURB AND GUTTER ASPHALT CUT @ DRIVE LANE



POLISHED CONCRETE IN CORRIDOR

FIREPLACE



MANPOWER COUNT

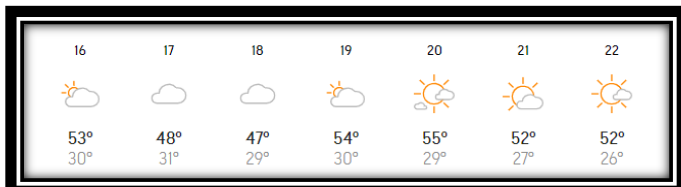
Trade Partners	Responsibility	Manpower Count
FCI Constructors, Inc.	General Contractor	8
Schofield	Excavation	7
Reigles	Plumbing & Mechanical	22
EC Electric	Electrical	30
Service West	Framing/Drywall/Grid Ceilings	6
Colorado Floorworks	Tile/Carpet	4
Concrete Visions	Floor Polishing	4
Excel Fire Protection	Fire Suppression	2
ASCO Construction, LLC	Brick Veneer/Masonry	14
Fountaine Design Group dba FDG Products	Metal Panels	0
Innovative Painting	Painting	3
Sidney Millworks	Casework	0
Eagle Valley Glass and Mirror	Glazing	0
Omni Tech Industries	Resinous Flooring	0
Total:		99

WEATHER HISTORY



- Weather days lost this week: 0
- Weather days to date: 0

FORECASTED WEATHER



UPCOMING WEATHER FORECAST

- Rain showers in the mix. Otherwise, warm days forecasted.



SAFETY REPORT

- Lost Time Accidents to Date = **0**
- Accidents This Week = **0**
- Days without lost time = **377**

INSPECTIONS/TESTING REPORT

- **All inspection parties present for their responsibilities.**
- Concrete Reinforcement (Ground Engineering) - **Ongoing**
- Concrete/Asphalt Testing (Ground Engineering) – **Ongoing**
- Mechanical (Ground Engineering) - **Ongoing**
- Electrical (DORA) – **Ongoing**
- Plumbing (DORA) – **Ongoing**
- In Floor Heat/Snow Melt (Ground Engineering) - **Ongoing**
- Steel Inspections (Ground Engineering) – **Ongoing**
- Roofing (Ground Engineering) – **Ongoing**
- Framing Inspections (Ground Engineering) – **Ongoing**
- Envelope Tightness (PCD Engineering) – **Ongoing**
- Exterior Insulation (Ground Engineering) – **Ongoing**
- Duct Inspection (Ground Engineering) – **Ongoing**
- Fire Suppression (Leadville Fire) - **Ongoing**

NEXT WEEK'S ACTIVITIES

- MEP Rough-in/Trim
- Addition Underground Plumbing
- Addition Slab Prep
- Addition Hydronic Tubing Install
- Low Volt Rough-in
- Hang/Tape/Finish Drywall Area B
- Fire Suppression Trim
- Concrete Floor Polishing
- Wall Tile/Carpet Install
- Ceiling Tile Drop
- Exterior Insulation/Brick Veneer
- Interior Prime and Paint
- Casework Install
- Classroom Grid Ceiling Install
- Civil Site Prep
- MEP Trim
- Specialties Install