



**District
Mission:**

LCSD Challenges students to reach their fullest potential through personal, engaged and rigorous learning in the classroom and beyond.

**Board
Priorities:**

Ensure all students stay on or above grade level each year and graduate prepared to successfully implement a plan for college or career.

Every day, we are college or career ready.

Provide all students with engaging learning opportunities.

Rigor and engagement are everywhere.

Create a space that is safe, inclusive and welcoming for all.

Diversity and culture make us better.

Plan and execute the capital and human capital investments that will make our district better.

We plan for the future.

Lake County School District Board of Education

April 22, 2024 4:00 pm Special Meeting

Location: District Office-Room 11 & via Zoom

1. 4:00 Call to order
2. 4:01 Pledge of Allegiance
3. 4:02 Roll Call
4. 4:03 Preview Agenda
5. 4:04 The Board will vote to convene in executive session pursuant to C.R.S. § 24-6-402(4)(g), to discuss confidential documents submitted by applicants for the position of superintendent, which documents are protected by the mandatory nondisclosure provisions of the Colorado Open Records Act, C.R.S. § 24-72-204(3)(a)(XI)(A).
6. 6:30 Resume Special Meeting
7. 6:31 Public Participation
Members of the public who wish to address the board on non-agenda items are welcome to do so at this time. Please sign up with board secretary. We ask you to please observe the following guidelines:
 - Confine your comments to matters that are germane to the business of the School District.
 - Recognize that students often attend or view our meetings. Speaker's remarks, therefore, should be suitable for an audience that includes kindergarten through twelfth grade students.
 - Understand that the board cannot discuss specific personnel matters or specific students in a public forum.
8. 6:35 Action Item
 - a. Resolution NO. 24-21 Declaring Finalists for Superintendent search
9. 6:40 Discussion item
 - a. Interview questions (Board interview/committee questions/Town Hall etc.)
 - b. Stakeholder groups
 - c. Finalize schedule for May 10th /May 11th (Possible May 9th)
 - d. Travel arrangements
 - e. Criminal/Financial backgrounds
 - f. Board representative for contract
10. 7:10 Break
11. 7:20 Discussion Item
 - a. Math Curriculum
12. 7:30 Action Item
 - a. Resolution NO. 24-22 Increase in Fund 26-The Center
 - b. Resolution NO. 24-23 Property to County for affordable housing & Amendment to IGA regarding the land and transfer of real property for affordable housing
 - c. Timberline Ranch Subdivision
13. 8:00 Health Insurance Review
14. 8:30 Discussion item
 - a. District Owned Vacant Land
 - b. Lifetime Bus request
15. 9:00 Break
16. 9:10 Budget updates
 - a. Finance Committee update
 - b. Superintendent update
 - c. Recommendations towards draft budget
 - d. Budget Reports
17. 9:50 Agenda Planning
 - a. Key people vacancies/new hires (timeline and planning)

A few welcoming notes:

The board's meeting time is dedicated to its strategic mission and top priorities. • The "consent agenda" has items which have either been discussed prior or are highly routine. By not discussing these issues, we are able to spend time on our most important priorities. • "Public participation" is an opportunity to present brief comments or pose questions to the board for consideration or follow-up. Time limits are 3 minutes for individual speakers if fewer than 20 individuals have signed up to speak; 2 minutes' limit and 5 minutes for groups of 20 signed up; and 1 minute for individual and 3 minutes for groups if more than 30 have signed up to speak. Please see Board Policy GP-14 (Governance Process) for the full policy. The boundaries are designed to help keep the strategic meeting focused and in no way limits conversations beyond the board meeting. • Your insights are needed and welcomed and the board encourages you to request a meeting with any board member, should you have something to discuss. • If you are interested in helping the district's achievement effort, please talk with any member of the leadership team or call the district office at 719-486-6800. Opportunities abound. Your participation is highly desired.



18. 10:00 Break
19. 10:05 Executive Session: The board will convene an executive session pursuant to Section 24-6-402(4)(e)(I), C.R.S. for purposes of determining positions relative to matters that may be subject to negotiations, developing strategy for negotiations, and instructing negotiators regarding the Master Agreement with the Lake County Education Association; pursuant to Section 24-6-402(4)(e)(III), C.R.S. for purposes of developing the strategy of the school district for negotiations relating to collective bargaining with the Lake County Education Association and pursuant to Section 24-6-402(4)(b), C.R.S. for legal advice regarding the same.
20. Resume Special Meeting
21. Adjourn
22. Upcoming meeting or event:
 - a. April 24, 2024 BOE Walk Through @ 9:00 am @ LCIS
 - b. May 1, 2024 BOE Walk Through @ 4:00 pm @ LCIS/Project Dream
 - c. May 1, 2024 Members of the board may attend the DAC Meeting @ 5:30 pm @ District Office/Zoom
 - d. May 6, 2024 Members of the board may attend a Top 10% Dinner @ 5:30 pm @ Masonic Lodge
 - e. May 8, 2024 BOE Walk Through @ 4:00 pm @ LCHS/Project Dream
 - f. May 10, 2024 Special Meeting @ TBD @ District Office
 - g. May 11, 2024 Special Meeting @ TBD @ LCHS/Zoom
 - h. May 13, 2024 Regular Meeting @ 6:30 pm @ District Office/Zoom
 - i. May 14, 2024 Members of the board may attend the Finance Committee Meeting @ 5:30 pm @ District Office/Zoom
 - j. May 15, 2024 BOE Walk Through @ TBD @ LCHS
 - k. May 22, 2024 BOE Walk Through @ 1:00 pm @ LCIS
 - l. May 28, 2024 Special Meeting @ 6:30 pm @ District Office/Zoom
 - m. June 5, 2024 Members of the board may attend the DAC Meeting @ 5:30 pm @ District Office/Zoom
 - n. June 8, 2024 Members of the board will attend Graduations for CCHS (8:30 AM) and LCHS (10:30 AM) @ LCHS
 - o. June 10, 2024 Regular Meeting @ 6:30 pm @ District Office/Zoom
 - p. June 11, 2024 Members of the board may attend the Finance Committee Meeting @ 5:30 pm @ District Office/Zoom
 - q. June 24, 2024 Special Meeting @ 6:30 pm @ District Office/Zoom

Estimated duration of meeting is 2.5 to 3 hours **Updated 4/19/2024

A few welcoming notes:

The board's meeting time is dedicated to its strategic mission and top priorities. • The "consent agenda" has items which have either been discussed prior or are highly routine. By not discussing these issues, we are able to spend time on our most important priorities. • "Public participation" is an opportunity to present brief comments or pose questions to the board for consideration or follow-up. Time limits are 3 minutes for individual speakers if fewer than 20 individuals have signed up to speak; 2 minutes' limit and 5 minutes for groups of 20 signed up; and 1 minute for individual and 3 minutes for groups if more than 30 have signed up to speak. Please see Board Policy GP-14 (Governance Process) for the full policy. The boundaries are designed to help keep the strategic meeting focused and in no way limits conversations beyond the board meeting. • Your insights are needed and welcomed and the board encourages you to request a meeting with any board member, should you have something to discuss. • If you are interested in helping the district's achievement effort, please talk with any member of the leadership team or call the district office at 719-486-6800. Opportunities abound. Your participation is highly desired.



Mision del Distrito:

LCSD desafía a los estudiantes a alcanzar su máximo potencial a través del aprendizaje personal, comprometido y riguroso en el aula y más allá.

Prioridades de la junta:

Asegúrese de que todos los estudiantes se mantengan en o por encima del nivel de grado cada año y se gradúen preparados para implementar con éxito un plan para la universidad o una carrera.

Todos los días estamos preparados para la universidad o una carrera.

Brindar a todos los estudiantes oportunidades de aprendizaje interesantes.

El rigor y el compromiso están en todas partes.

Crea un espacio seguro, inclusivo y acogedor para todos.

La diversidad y la cultura nos hacen mejores.

Planificar y ejecutar las inversiones de capital y capital humano que mejorarán nuestro distrito.

Planeamos para el futuro.

**Junta de Educación del Distrito Escolar del Condado de Lake
22 de abril de 2024 4:00 pm reunión especial**

Ubicación: Oficina del distrito y via Zoom

1. 4:00 Llamada al orden
2. 4:01 Juramento a la bandera
3. 4:02 Pasar lista
4. 4:03 Vista previa de la agenda
5. 4:04 The Board will vote to convene in executive session pursuant to C.R.S. § 24-6-402(4)(g), to discuss confidential documents submitted by applicants for the position of superintendent, which documents are protected by the mandatory nondisclosure provisions of the Colorado Open Records Act, C.R.S. § 24-72-204(3)(a)(XI)(A).
6. 6:30 Reanudar la reunión especial
7. 6:31 Participación pública
Los miembros del público que deseen dirigirse a la junta sobre temas que no estén en la agenda pueden hacerlo en este momento. Regístrese con el secretario de la junta . Le pedimos que observe las siguientes pautas:
 - Limite sus comentarios a asuntos relacionados con los negocios del Distrito Escolar.
 - Reconozca que los estudiantes a menudo asisten o ven nuestras reuniones. Por lo tanto, los comentarios del orador deben ser adecuados para una audiencia que incluya a estudiantes de jardín de infantes a duodécimo grado.
 - Entender que la junta no puede discutir asuntos específicos de personal o estudiantes específicos en un foro público.
8. 6:35 Elemento de acción
 - a. Resolución NO. 24-21 Declaración de Finalistas para la búsqueda de Superintendente
9. 6:40 Tema de discusión
 - a. Preguntas de la entrevista (entrevista a la junta directiva/preguntas del comité/Ayuntamiento, etc.)
 - b. Grupos de partes interesadas
 - c. Finalizar agenda para el 10/11 de mayo (Posible 9 de mayo)
 - d. Arreglos de viaje
 - e. Antecedentes penales/financieros
 - f. Representante de la junta para el contrato.
10. 7:10 Descanso
11. 7:20 Tema de discusión
 - a. Plan de estudios de matemáticas
12. 7:30 Elemento de acción
 - a. Resolución NO. 24-22 Aumento del Fondo 26-El Centro
 - b. Resolución NO. 24-23 Propiedad al Condado para viviendas asequibles y Enmienda al IGA con respecto al terreno y la transferencia de bienes inmuebles para viviendas asequibles
 - c. Subdivisión del rancho Timberline
13. 8:00 Revisión del seguro médico
14. 8:30 Tema de discusión
 - a. Terrenos baldíos propiedad del distrito
 - b. Solicitud de autobús de por vida
15. 9:00 Descanso
16. 9:10 Actualizaciones del presupuesto
 - a. Actualización del Comité de Finanzas
 - b. Actualización del superintendente
 - c. Recomendaciones para el proyecto de presupuesto

A few welcoming notes:

The board's meeting time is dedicated to its strategic mission and top priorities. • The "consent agenda" has items which have either been discussed prior or are highly routine. By not discussing these issues, we are able to spend time on our most important priorities. • "Public participation" is an opportunity to present brief comments or pose questions to the board for consideration or follow-up. Time limits are 3 minutes for individual speakers if fewer than 20 individuals have signed up to speak; 2 minutes' limit and 5 minutes for groups of 20 signed up; and 1 minute for individual and 3 minutes for groups if more than 30 have signed up to speak. Please see Board Policy GP-14 (Governance Process) for the full policy). The boundaries are designed to help keep the strategic meeting focused and in no way limits conversations beyond the board meeting. • Your insights are needed and welcomed and the board encourages you to request a meeting with any board member, should you have something to discuss. • If you are interested in helping the district's achievement effort, please talk with any member of the leadership team or call the district office at 719-486-6800. Opportunities abound. Your participation is highly desired.



- d. Informes presupuestarios
17. 9:50 Planificación de la agenda
- a. Vacantes de personas clave/nuevas contrataciones (cronograma y planificación)
18. 10:00 Descanso
19. 10:05 Executive Session: The board will convene an executive session pursuant to Section 24-6-402(4)(e)(I), C.R.S. for purposes of determining positions relative to matters that may be subject to negotiations, developing strategy for negotiations, and instructing negotiators regarding the Master Agreement with the Lake County Education Association; pursuant to Section 24-6-402(4)(e)(III), C.R.S. for purposes of developing the strategy of the school district for negotiations relating to collective bargaining with the Lake County Education Association and pursuant to Section 24-6-402(4)(b), C.R.S. for legal advice regarding the same.
20. Reanudar la reunión especial
21. Aplazar
22. Next Reunion o evento:
- 24 de abril de 2024 Recorrido por el BOE a las 9:00 am en LCIS
 - 1 de mayo de 2024 Recorrido por el BOE a las 4:00 pm en LCIS/Project Dream
 - 1 de mayo de 2024 Los miembros de la junta pueden asistir a la reunión del DAC a las 5:30 p. m. en la oficina del distrito/Zoom
 - 6 de mayo de 2024 Los miembros de la junta pueden asistir a una cena del 10% superior a las 5:30 p. m. en Masonic Lodge
 - 8 de mayo de 2024 Recorrido por el BOE a las 4:00 pm en LCHS/Project Dream
 - 10 de mayo de 2024 Reunión especial del a las TBD en la oficina del distrito/Zoom
 - 11 de mayo de 2024 Reunión especial del a las TBD en la oficina del distrito/Zoom
 - 13 de mayo de 2024 Reunión ordinaria a las 6:30 p. m. en la oficina del distrito/Zoom
 - 14 de mayo de 2024 Los miembros de la junta pueden asistir a la reunión del Comité de Finanzas a las 5:30 p. m. en la oficina del distrito/Zoom
 - 15 de mayo de 2024 Recorrido por el BOE a las ¿?? pm en LCHS
 - 22 de mayo de 2024 Recorrido por el BOE a las 1:00 pm en LCIS
 - 28 de mayo Reunión especial del de 2024 a las 6:30 p. m. en la oficina del distrito/Zoom
 - 5 de junio de 2024 Los miembros de la junta pueden asistir a la reunión del DAC a las 5:30 p. m. en la oficina del distrito/Zoom
 - 8 de junio de 2024 Los miembros de la junta asistirán a las graduaciones de CCHS (8:30 a. m.) y LCHS (10:30 a. m.) en LCHS
 - 10 de junio de 2024 Reunión ordinaria a las 6:30 p. m. en la oficina del distrito/Zoom
 - 11 de junio de 2024 Los miembros de la junta pueden asistir a la reunión del Comité de Finanzas a las 5:30 p. m. en la oficina del distrito/Zoom
 - Reunión especial del 24 de junio de 2024 a las 6:30 p. m. en la oficina del distrito/Zoom

La duración estimada de la reunión es de 2,5 a 3 horas ** Actualizado 4/19/2024

Algunas notas de bienvenida:

El tiempo de reunión de la junta se dedica a su misión estratégica y sus principales prioridades. • La "agenda de consentimiento" tiene elementos que han sido discutidos previamente o son muy rutinarios. Al no discutir estos temas, podemos dedicar tiempo a nuestras prioridades más importantes. • La "participación pública" es una oportunidad para presentar breves comentarios o plantear preguntas a la junta para su consideración o seguimiento. Los límites de tiempo son 3 minutos para oradores individuales si menos de 20 personas se han inscrito para hablar; Límite de 2 minutos y 5 minutos para grupos de 20 inscritos; y 1 minuto para individuales y 3 minutos para grupos si más de 30 se han inscrito para hablar. Consulte la Política de la Junta GP-14 (Proceso de gobernanza) para conocer la política completa). Los límites están diseñados para ayudar a mantener la reunión estratégica enfocada y de ninguna manera limita las conversaciones más allá de la reunión de la junta. • Sus ideas son necesarias y bienvenidas y la junta le anima a solicitar una reunión con cualquier miembro de la junta, en caso de que tenga algo que discutir. • Si está interesado en ayudar en el esfuerzo de rendimiento del distrito, hable con cualquier miembro del equipo de liderazgo o llame a la oficina del distrito al 719-486-6800. Abundan las oportunidades. Su participación es muy deseada d.

A few welcoming notes:

The board's meeting time is dedicated to its strategic mission and top priorities. • The "consent agenda" has items which have either been discussed prior or are highly routine. By not discussing these issues, we are able to spend time on our most important priorities. • "Public participation" is an opportunity to present brief comments or pose questions to the board for consideration or follow-up. Time limits are 3 minutes for individual speakers if fewer than 20 individuals have signed up to speak; 2 minutes' limit and 5 minutes for groups of 20 signed up; and 1 minute for individual and 3 minutes for groups if more than 30 have signed up to speak. Please see Board Policy GP-14 (Governance Process) for the full policy). The boundaries are designed to help keep the strategic meeting focused and in no way limits conversations beyond the board meeting. • Your insights are needed and welcomed and the board encourages you to request a meeting with any board member, should you have something to discuss. • If you are interested in helping the district's achievement effort, please talk with any member of the leadership team or call the district office at 719-486-6800. Opportunities abound. Your participation is highly desired.

RESOLUTION NO. 24-21

**RESOLUTION DECLARING FINALISTS FOR SUPERINTENDENT FOR
LAKE COUNTY SCHOOL DISTRICT R1.**

WHEREAS the Board of Education has lawfully appointed a search committee to conduct a superintendent search pursuant to Colo. Rev. Stat. § 24-6-402(3.5); and

WHEREAS the Search Committee has screened the applicants and conducted preliminary interviews, where appropriate, and recommended finalists for consideration to the Board of Education

WHEREAS the Board of Education has reviewed and accepted the Search Committee's recommendations;

NOW, THEREFORE, BE IT RESOLVED & DECLARED BY THE BOARD OF EDUCATION OF LAKE COUNTY SCHOOL DISTRICT R1:

The following persons are finalists for the position of Superintendent for Lake County School District:

ADOPTED AND APPROVED this 22nd day of April, 2024.

LAKE COUNTY SCHOOL DISTRICT R-1

John Baker, President

Miriam Lozano, Secretary

Lake County School District
328 West 5th Street
Leadville, CO 80461

RESOLUTION NO. 24-22

BE IT RESOLVED THAT, the Board of Education of Lake County School District R-1 authorizes an increase in the 2023-2024 Funds as follows:

Fund 26-The Center

Lake County Early Care and Education Fund (New acquisition)	\$60,000.00
--	-------------

Total	\$60,000.00
--------------	--------------------

Miriam Lozano, Secretary

John Baker, President

Dated: April 22, 2024

**LAKE COUNTY SCHOOL DISTRICT NO. R-1
Resolution NO. 24-23 Authorizing Sale**

WHEREAS, the Lake County School District No. R-1 (“School District”) is the owner of unimproved real property located in Lake County and more particularly described as:

The Land referred to herein is located in the County of Lake, State of Colorado, and described as follows:

Lots numbered One (1) to Sixteen (16) both inclusive in Block number Twenty-one (21) of Stevens and Leiter’s Subdivision of Stevens and Leiter’s Placer, U.S. Survey Number 271, same being a subdivision of the City of Leadville, County of Lake, State of Colorado.

(“Property”); and

WHEREAS, on January 31, 2024, the Board of Education (“Board”) of the School District, the Lake County Board of County Commissioners (“County”), and the Leadville/Lake County Regional Housing Authority entered into that certain Intergovernmental Agreement Regarding the Lease and Transfer of Real Property for Affordable Housing Purposes (“IGA”), pursuant to which the School District agreed to transfer the Property to the County upon construction of an affordable housing project (“Project”) on the Property in consideration for restricting a percentage of the units for School District employees; and

WHEREAS, the Property now requires environmental remediation prior to the commencement of construction of the Project for which the County is seeking funding from various government programs; and

WHEREAS, to obtain such funding, the County is required to hold title to the Property and has requested conveyance of the Property prior to completing construction of the Project; and

WHEREAS, the School District is willing to convey the Property to the County to allow for the necessary environmental remediation; and

WHEREAS, due to the timing of the County’s requested conveyance, the details of the Project, including the number and type of units and affordable housing guidelines for ownership and occupancy have not been finalized, therefore, the County desires to revise the form of deed restriction attached to the IGA; and

WHEREAS, the School District is willing to revise the deed restriction provided that 25% of the units are restricted for School District employees and provided that the County uses good faith efforts to maximize the number of District employees who are eligible to occupy the Project; and

WHEREAS, there has been presented to the Board at this meeting an amendment to the IGA that will permit the conveyance of the Property and recording of a replacement deed restriction (“IGA Amendment”).

NOW, THEREFORE, BE IT RESOLVED BY THE BOARD OF EDUCATION OF LAKE COUNTY SCHOOL DISTRICT NO. R-1:

Section 1. That the Board hereby authorizes the sale of the Property to the County or the Authority as the County’s permitted assignee in accordance with the IGA as amended by the IGA Amendment. All action heretofore taken, not inconsistent with the provisions of this resolution (“Resolution”), by the Board, its officers, and agents, directed toward the conveyance of the Property, is hereby ratified, approved, and confirmed.

Section 2. That the IGA Amendment in substantially the form presented to the Board prior to the adoption of this Resolution, is in all respects approved, authorized, and confirmed. The Board President, Superintendent of Schools, or Chief Financial Officer (each an “Authorized Officer”) is hereby authorized to execute and deliver the IGA Amendment for and on behalf of the Board, with such changes consistent with this Resolution as they shall approve. The Authorized Officer is further authorized to execute and deliver, for and on behalf of the Board, any and all additional certificates, documents and other papers and to perform all other acts that they may deem necessary or appropriate in order to implement and carry out the conveyance of the Property and other matters authorized by this Resolution.

Section 3. Ratification. All actions heretofore taken by the Board, its officers, and agents, that were not inconsistent with the provisions of this Resolution are hereby ratified, approved and confirmed.

Section 4. Severability. If any section, paragraph, clause or provision of this Resolution shall for any reason be held to be invalid or unenforceable, the invalidity or unenforceability of such section, paragraph, clause or provision shall not affect any of the remaining provisions of this Resolution.

Section 5. Repealer of Measures. All acts, orders, resolutions or parts thereof, in conflict with this Resolution or with any of the documents hereby approved, are hereby repealed only to the extent of such conflict. This repealer shall not be construed as reviving any resolution, or part thereof heretofore repealed.

Section 6. Effectiveness. This Resolution shall take effect immediately upon its passage.

PASSED AND ADOPTED this 22nd day of April, 2024.

LAKE COUNTY SCHOOL DISTRICT NO. R-1

[SEAL]

By _____
John Baker, President

Attest:

By _____
Miriam Lozano, Secretary

AMENDMENT TO
INTERGOVERNMENTAL AGREEMENT REGARDING THE LEASE AND TRANSFER OF
REAL PROPERTY FOR AFFORDABLE HOUSING PURPOSES

This Amendment to Intergovernmental Agreement Regarding the Lease and Transfer of Real Property for Affordable Housing Purposes (the “Amendment”) is entered into this 22nd day of April 2024. (the “Effective Date”), by and among the Board of County Commissioners of Lake County, with an address of 505 Harrison Avenue, Leadville, CO 80461 (the “County”), the Leadville Lake County Regional Housing Authority, a Colorado regional housing authority with an address of 505 Harrison Avenue, Leadville, CO 80461 (the “Authority”), and the Lake County School District R-1, a Colorado public school district with an address of 328 West 5th Street, Leadville, CO 80461 (the “School District”) (each a “Party” and collectively, the “Parties”). Capitalized terms used herein and not otherwise defined shall have the meaning ascribed to them in the IGA.

RECITALS

WHEREAS the Parties entered into an Intergovernmental Agreement (“IGA”) that was recorded with the Lake County Clerk and Recorder on February 1, 2024, at Reception No. 388552, in order to set out the terms and conditions to facilitate the construction of an affordable housing project in Lake County on land currently owned by the School District (the “Project”); and

WHEREAS, the IGA contains an Option to Purchase under which the County may purchase the Property upon commencement of construction of the Project; and

WHEREAS the Property requires environmental remediation prior to commencement of construction of the Project for which the County is seeking funding from various government programs; and

WHEREAS the County is required to hold title to the Property as a pre-requisite to receive such funding and is therefore requesting conveyance of title to the Property prior to completing construction of the Project; and

WHEREAS, the School District is willing to convey the Property prior to completing construction of the Project subject to the terms and conditions set forth in this Amendment.

AGREEMENT

NOW, THEREFORE, for and in consideration of the foregoing recitals, incorporated herein by this reference, the mutual promises contained herein and other good and valuable consideration, the receipt and sufficiency of which are hereby acknowledged, the parties hereto agree to amend the provisions for purchase of the Property under the following terms and conditions set forth below.

1. In consideration for County undertaking environmental remediation on the Property at County's cost and notwithstanding that the Option conditions have not been met, the School District hereby agrees to promptly convey the Property to the County.
2. The transfer of the Property from the School District to the County (the "Closing") shall take place as expeditiously as possible to meet the application and funding deadlines for remediation of the Property.
3. The County shall pay all fees and costs in connection with the Closing, including without limitation closing fees, costs of preparing the deed and other documents of conveyance, the cost of furnishing any title documents and the premium for any title policy and endorsements thereto, the cost of recording any documents necessary to make title marketable, the filing fee to record the deed, and any other reasonable fees incurred by either Party in connection with the Closing.
4. The School District's obligation to close shall be conditioned on the recording of a deed restriction in substantially the form attached hereto and incorporated herein as Exhibit A (the "Replacement Deed Restriction"), which shall supersede and replace the Deed Restriction attached to the IGA as Exhibit B.
5. On or before the Closing, the County may assign the right to purchase the Property under this Amendment to the Authority upon prior written notice to the School District.
6. Subject to Annual Appropriation. Consistent with Article X, § 20 of the Colorado Constitution, any financial obligation of a Party not performed during the current fiscal year is subject to annual appropriation, shall extend only to monies currently appropriated, and shall not constitute a mandatory charge, requirement, debt, or liability beyond the current fiscal year.
7. All other remaining provisions of the IGA not expressly revised in this Amendment remain in full force and effect.

IN WITNESS WHEREOF, the Parties have executed this Agreement as of the Effective Date.

Signatures on following page

Lake County, Colorado
Board of County Commissioners

Jeff Fiedler, Chair

Attest As to The Commissioner’s Signature:

Tracey Lauritzen, ex officio Clerk to the Board

Leadville/Lake County Regional Housing Authority

Chair

Attest:

Miriam Lozano, Secretary

LAKE COUNTY SCHOOL DISTRICT

John Baker, Chair

STATE OF COLORADO)
) ss.
COUNTY OF LAKE)

The foregoing instrument was subscribed, sworn to and acknowledged before me this 22nd day of April, 2024, by John Baker as School Board President of the Lake County School District.

Witness my hand and official seal.

Notary Public

(S E A L)

My commission expires: _____

EXHIBIT A

DEED RESTRICTION AGREEMENT

THIS DEED RESTRICTION AGREEMENT (the "Agreement") is entered into this ____ day of _____, 2024 (the "Effective Date") by and between Board of County Commissioners of Lake County, Colorado, the Leadville Lake County Regional Housing Authority, a Colorado regional housing authority (the "Authority"), and Lake County School District, a Colorado school district (the "District") (each a "Party" and collectively the "Parties").

WHEREAS the District owns the real property described on Exhibit A, attached hereto and incorporated herein (the "Property"), and wishes to convey the Property to the Authority for the purpose of constructing housing (the "Project"); and

WHEREAS, prior to such conveyance, the Parties wish to permanently restrict a portion of the Property's future residential units for the occupancy by District employees who meet certain income restrictions.

NOW, THEREFORE, for and in consideration of the mutual promises and covenants contained herein, the sufficiency of which is mutually acknowledged, the Parties agree as follows:

1. Property.

a. This Agreement shall apply to twenty-five percent (25%) of the residential units constructed on the Property (the "Restricted Units"). Upon completion of the Project, the Parties shall enter into and record an amendment to this Agreement which specifically identifies Restricted Units that are reasonably acceptable to the School District.

b. The Restricted Units are hereby burdened with the covenants and restrictions specified in this Agreement, in perpetuity.

2. Definitions. For purposes of this Agreement, the following terms shall have the following meanings:

a. *Area Median Income ("AMI")* means the median annual income for Lake County (or such next larger statistical area calculated by the Department of Housing and Urban Development ("HUD") that includes Lake County, and if HUD does not calculate the Area Median Income for the County on a distinct basis from other areas), as adjusted for household size, that is calculated and published annually by HUD (or any successor index thereto acceptable to the Authority, in its reasonable discretion).

b. *Employed by the District* means an individual who works an average of 30 hours or more per week for the District and earns at least 80% of their Gross Income from employment with the District.

c. *Guidelines* means the applicable Leadville Lake County Community Housing Guidelines to be adopted by the Authority for the Project, including income limits for occupancy

of the Project. The Authority shall consult with and solicit input from the School District in connection with drafting and adopting the Guidelines and shall use good faith efforts to draft and adopt Guidelines that maximize the number of District employees who are eligible to occupy the Restricted Units and the Project.

d. *Gross Income* means the sum of all wages, salaries, profits, interest payments, rents, and other forms of earnings in a Household, before any deductions or taxes.

e. *Household* means one or more individuals who intend to occupy a Restricted Unit as a single housekeeping unit.

f. *Maximum Resale Price* means an amount not exceed the sum of: the purchase price paid by the owner for the Restricted Unit; plus an increase of 2% of such purchase price per year (prorated at the rate of 1/12 for each whole month, but not compounded annually) from the date of the purchase of the unit to the date of the owner's Notice of Intent to sell the Unit; plus an amount equal to any special assessments paid by the owner during the Owner's ownership of the unit; plus the cost of permitted capital improvements made to the unit by the Owner, pursuant to separate guidelines issued by the Authority; minus any amounts associated with bringing the unit up to the minimum standards required by the Authority.

g. *Non-Qualified Occupant* means a person or business who does not meet the definition of a Qualified Occupant.

h. *Principal Place of Residence* means the home or place in which one's habitation is fixed and to which one has a present intention of returning after a departure or absence therefrom. In determining what is a principal place of residence, the Authority will consider the criteria set forth in C.R.S. § 31-10-201(3), as amended.

i. *Owner* means any person who acquires an ownership interest in a Restricted Unit, including without limitation Qualified Occupants, Non-Qualified Occupants and Inheriting Owners.

j. *Qualified Occupant* means a natural person who: is Employed by the District; meets the income limits established by the Authority for the Project in the Guidelines; and will occupy the unit as their principal place of residence at all times. The parties acknowledge and agree that at the time of the recording of this Deed Restriction Agreement, the Project is permitted to serve households with 80% AMI for rental units and 140% for owned units. The parties further acknowledge and agree that these levels may need to adjust due to Project and community needs, financing conditions, or changes in applicable law. Absent an amendment to this Deed Restriction Agreement reflecting such adjustments, the Authority shall not otherwise adjust income limits for the Restricted Units or the Project below 80% AMI for rental units and 140% for owned units.

k. *Transfer* means any sale, conveyance, assignment or transfer, voluntary or involuntary, of any interest in a Restricted Unit, including without limitation a fee simple interest, a joint tenancy interest, a life estate, a leasehold interest and an interest evidenced by any contract by which possession of a Restricted Unit is transferred and an owner retains title;

provided that the lease of a room or rooms in a Restricted Unit to a Qualified Occupant in accordance with this Agreement shall not constitute a Transfer.

3. Occupancy Restrictions.

a. Restricted Units shall be continuously occupied by at least one Qualified Occupant as their principal place of residence. If a Qualified Occupant ceases to occupy a Restricted Unit as their principal place of residence, the Qualified Occupant shall immediately contact the Authority to Transfer the Restricted Unit pursuant to Section 4 hereof.

b. The Qualified Occupant may lease a room or rooms within a Restricted Unit to other Qualified Occupants. Leases of less than 30 days or more than 6 months are prohibited, provided that a Qualified Occupant may renew a 6-month lease without limitation.

c. No business activity shall occur on or within a Restricted Unit, other than as permitted within the zone district applicable to the Property.

d. No later than February 1st of each year, all Qualified Occupants shall submit one copy of a sworn affidavit, on a form provided by the Authority, verifying that the Restricted Unit is occupied in accordance with this Agreement and the Guidelines.

e. Should the Authority acquire possession of a Restricted Unit for any reason, the Authority may lease the Restricted Unit subject to the terms of this Agreement.

4. Transfer.

a. The Owner shall first notify the Authority that the Owner wishes to Transfer a Restricted Unit. The Authority shall have the first option to purchase the Restricted Unit, exercisable within a period of 15 days after receipt of notice, and if the Authority exercises its right and option, the Authority shall purchase the Restricted Unit from the Owner for a price equal to the Maximum Resale Price, or the appraised market value, whichever is less.

b. Should the Authority decide not to purchase the Restricted Unit, Owner shall list the Restricted Unit for sale in accordance with the Guidelines, and shall thereafter select a Qualified Occupant pursuant to the Guidelines.

c. The Restricted Unit shall be transferred only to the Authority or a Qualified Occupant, and shall not be sold for more than the Maximum Resale Price.

d. At closing, the Qualified Occupant shall execute, in a form satisfactory to the Authority and for recording with the Lake County Clerk and Recorder, a document acknowledging this Deed Restriction and expressly agreeing to be bound by it.

5. Effect of Transfer to a Non-Qualified Occupant.

a. If for any reason the Restricted Unit is transferred to a Non-Qualified Occupant, the Non-Qualified Occupant shall immediately contact the Authority to Transfer the Restricted Unit pursuant to Section 4 hereof.

b. The Non-Qualified Occupant shall execute any and all documents necessary for the Transfer.

c. A Non-Qualified Occupant shall not: occupy a Restricted Unit; rent any part of a Restricted Unit; engage in any business activity in a Restricted Unit; or Transfer a Restricted Unit except in accordance with this Agreement.

6. Transfer by Devise or Inheritance.

a. If a Transfer occurs by devise or inheritance due to death of an Owner, the personal representative of the Owner's estate or the person inheriting the Restricted Unit (the "Inheriting Owner") shall provide written notice to the Authority within 30 days of the date of death.

b. If the Inheriting Owner is a Qualified Occupant, they shall provide the Authority with documentation proving their status as such, and the Authority may determine if the Inheriting Owner is in fact a Qualified Occupant. If the Inheriting Owner fails to provide the required documentation, they shall be deemed a Non-Qualified Occupant. If the Inheriting Owner is a Qualified Occupant, they shall succeed in the Qualified Occupant's interest and obligations under this Agreement.

c. If the Inheriting Owner is a Non-Qualified Occupant, the Inheriting Owner shall Transfer the Restricted Unit pursuant to Section 4 hereof.

7. Consensual Lien; Right to Redeem. For the purpose of securing performance under this Agreement and creating in favor of the Authority a right to redeem in accordance with Part 3 of Article 38 of Title 38, C.R.S., as amended, District hereby grants to Authority a consensual lien on the Property and the right to redeem upon failure to perform by Owner. Such lien shall not have a lien amount.

8. Breach.

a. It shall be a breach of this Agreement for an Owner or Qualified Occupant to violate any provision of this Agreement, or to default in payment or other obligations due to be performed under a promissory note secured by a first deed of trust encumbering a Restricted Unit.

b. If the Authority has reasonable cause to believe that an Owner or Qualified Occupant is violating this Agreement, the Authority may inspect the Restricted Unit between the hours of 8:00 a.m. and 5:00 p.m., Monday through Friday, after providing the Owner or Inheriting Owner with 24 hours written notice. This Agreement shall constitute permission to enter the Restricted Unit during such times upon such notice.

c. If the Authority discovers a violation of this Agreement, the Authority shall notify the Owner and Qualified Occupant of the violation and allow 15 days to cure.

9. Remedies.

a. Any Transfer in violation of this Agreement shall be wholly null and void and shall confer no title whatsoever upon the purported buyer. Each and every Transfer, for all purposes, shall be deemed to include and incorporate by this reference the covenants contained in this Agreement, even if the Transfer documents fail to reference this Agreement.

b. The Authority may pursue all available remedies for violations of this Agreement, including without limitation specific performance or a mandatory injunction requiring a Transfer of the Restricted Unit, with the costs of such Transfer to be paid out of the proceeds of the sale.

c. Upon request by the Authority, each Owner authorizes the holder of any mortgage or deed of trust against a Restricted Unit to disclose to the Authority if any payments due are delinquent and the duration and amount of such delinquency.

d. Any violation of this Agreement shall cause the Maximum Resale Price to freeze and remain fixed until the date such violation is fully cured.

e. In addition to the specific remedies set forth herein, the Authority shall have all other remedies available at law or equity, and the exercise of one remedy shall not preclude the exercise of any other remedy.

10. Foreclosure.

a. As part of this Deed Restriction, recorded with the Clerk and County of Lake County, the Authority shall receive notice from a lender of past due payments, defaults, or notice of foreclosure in payments or other obligations due from Owner.

b. An Owner shall immediately notify the Authority, in writing, of any notice of foreclosure under the first deed of trust or any other subordinate security interest in the Restricted Unit, or when any payment on any indebtedness encumbering the Restricted Unit is required to avoid foreclosure of the first deed of trust or other subordinate security interest in the Restricted Unit.

c. Within 60 days after receipt of any notice described herein, the Authority may (but shall not be obligated to) proceed to make any payment required to avoid foreclosure. Upon making any such payment, the Authority shall place a lien on the Property in the amount paid to cure the default and avoid foreclosure, including all fees and costs resulting from such foreclosure.

d. Notwithstanding any other provision of this Agreement, in the event of a foreclosure, acceptance of a deed-in-lieu of foreclosure, or assignment, this Agreement shall remain in full force and effect, including without limitation Section 4 hereof, restricting Transfer of the Restricted Unit.

e. The Authority shall have 30 days after issuance of the public trustee's deed or the acceptance of a deed in lieu of foreclosure by the holder in which to purchase by tendering to the holder, in cash or certified funds, an amount equal to the redemption price which would have been required of the borrower or any person who might be liable upon a deficiency on the last day of the statutory redemption period(s) and any additional reasonable costs incurred by the holder related to the foreclosure.

11. Miscellaneous.

a. *Modification.* This Agreement may only be modified by subsequent written agreement of the Parties, provided that, if the Authority obtains title to the Property, the Authority may modify or terminate this Agreement at any time.

b. *Integration.* This Agreement and any attached exhibits constitute the entire agreement between the Parties, superseding all prior oral or written communications.

c. *Binding Effect.* This Agreement shall be binding upon and inure to the benefit of the Parties and their respective heirs, successors and assigns.

d. *Severability.* If any provision of this Agreement is determined to be void by a court of competent jurisdiction, such determination shall not affect any other provision hereof, and all of the other provisions shall remain in full force and effect.

e. *Governing Law and Venue.* This Agreement shall be governed by the laws of the State of Colorado, and any legal action concerning the provisions hereof shall be brought in Lake County, Colorado.

f. *Third Parties.* There are no intended third-party beneficiaries to this Agreement.

g. *No Joint Venture.* Notwithstanding any provision hereof, the Authority shall never be a joint venture in any private entity or activity which participates in this Agreement, and the Authority shall never be liable or responsible for any debt or obligation of any participant in this Agreement.

h. *Notice.* Any notice under this Agreement shall be in writing, and shall be deemed sufficient when directly presented or sent pre-paid, first class United States Mail to the Party at the address set forth on the first page of this Agreement, or, if the Property has been transferred to a subsequent Owner, the Owner's address on file with the Lake County Assessor.

i. *Recording.* This Agreement shall be recorded with the Lake County Clerk and Recorder. The benefits and obligations of District under this Agreement shall run with the land, and shall be binding on any subsequent holder of an interest in the Property.

The foregoing instrument was subscribed, sworn to and acknowledged before me this _____ day of _____, 2024, by _____ of the Lake County School District.

Witness my hand and official seal.

Notary Public

(S E A L)

My commission expires: _____

EXHIBIT A

LEGAL DESCRIPTION OF PROPERTY

EXHIBIT B

LEADVILLE LAKE COUNTY COMMUNITY HOUSING GUIDELINES

4864-1927-5960, v. 1



Lake County School District
Learning Beyond Walls

April 18, 2024

To whom it may concern:

During a regularly held school board meeting on February 12, 2024, Nick Costello and Melissa Kendrick presented a preliminary plan for the Timber Ranch Subdivision. The plan included 26 single family and 16 multi-family units for a total of 42 units. The school bus route currently travels Evergreen Drive. Adding a bus stop for students that occupy these units has been discussed and would be addressed at the time a need arose. On April 17, 2024 the District was notified of a change in plan for the development increasing the total number of units to 88 (56 single family, 32 multi family).

The Lake County School District proposed that the project follow the county code for school land dedication of .9256 acres (Single Family: 56 X .0151 acres) (Multi-Family: 32 X .0025) or cash-in-lieu payment through a cash payment in the amount of \$107,948.72 (88 units X \$1226.69).

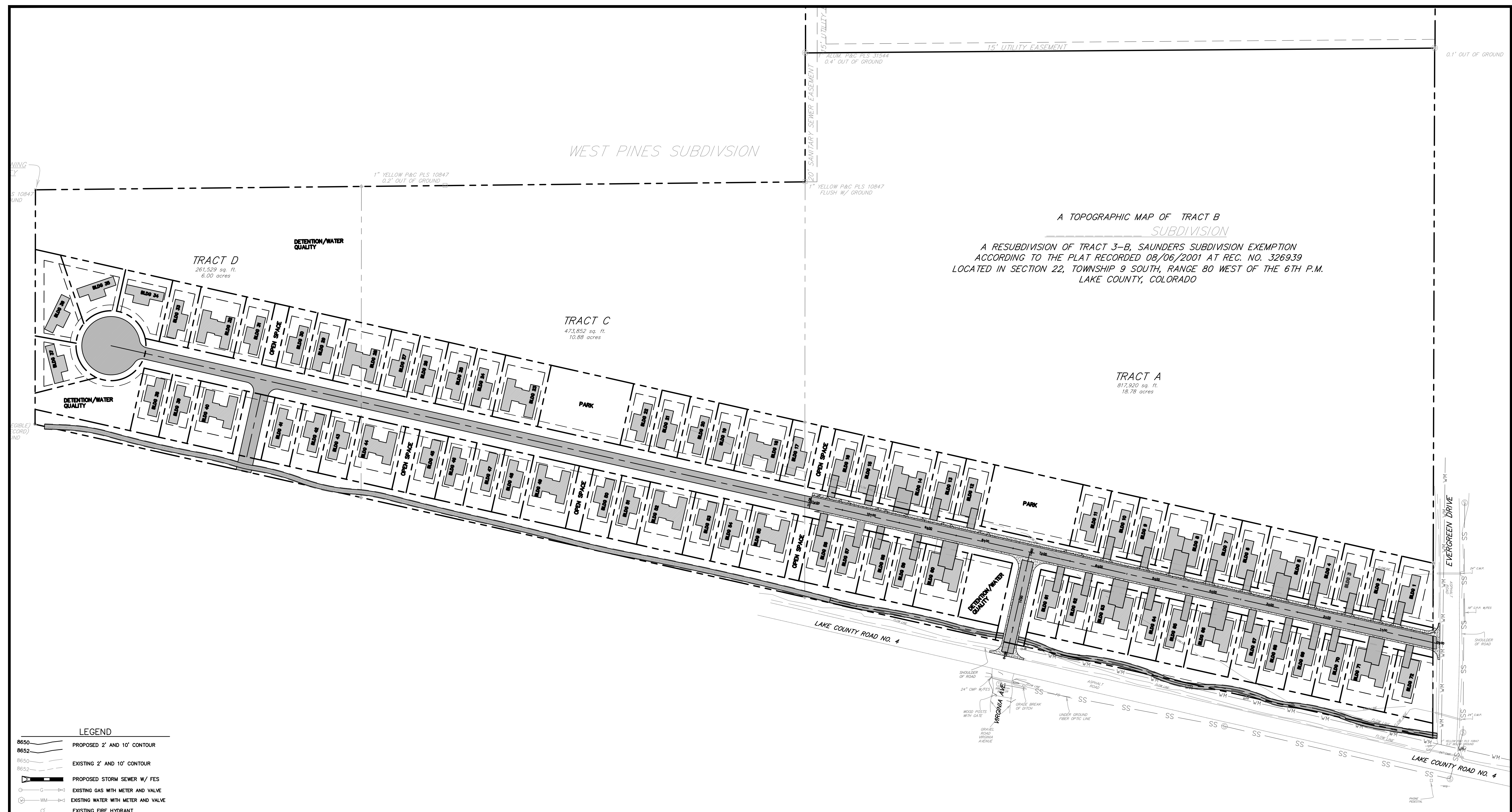
Sincerely,

Paul Anderson

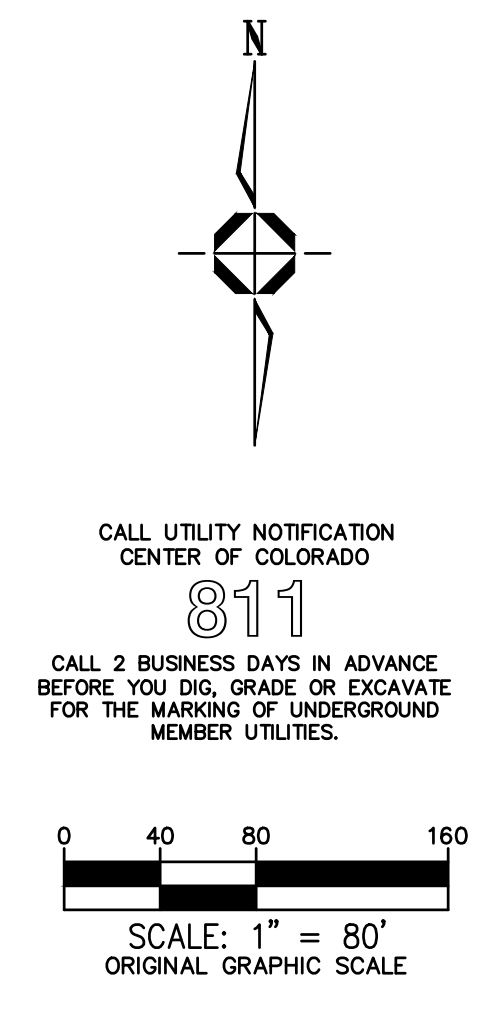
Chief Financial Officer, Lake County School District



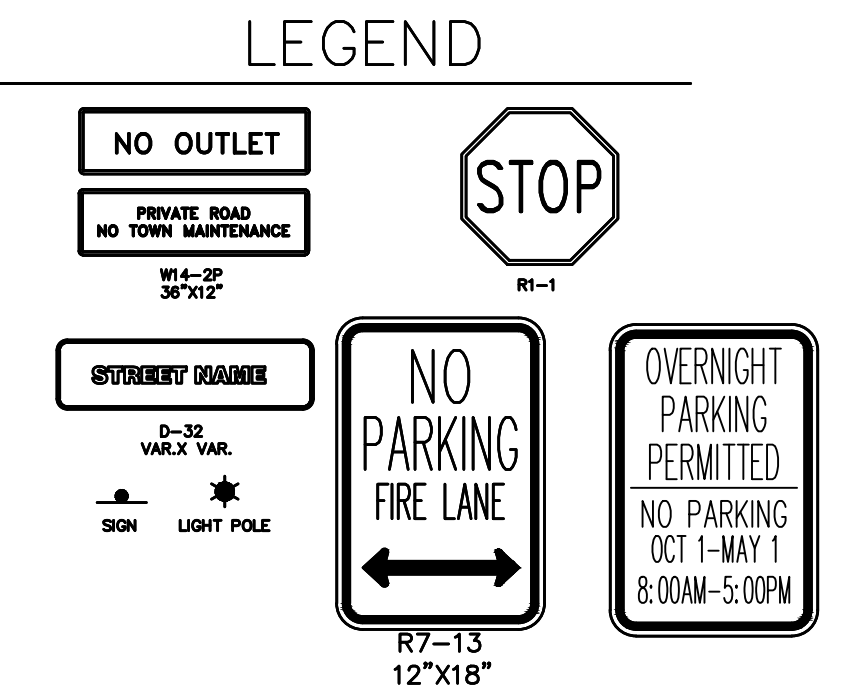
A TOPOGRAPHIC MAP OF TRACT B
SUBDIVISION
A RESUBDIVISION OF TRACT 3-B, SAUNDERS SUBDIVISION EXEMPTION
ACCORDING TO THE PLAT RECORDED 08/06/2001 AT REC. NO. 326939
LOCATED IN SECTION 22, TOWNSHIP 9 SOUTH, RANGE 80 WEST OF THE 6TH P.M.
LAKE COUNTY, COLORADO



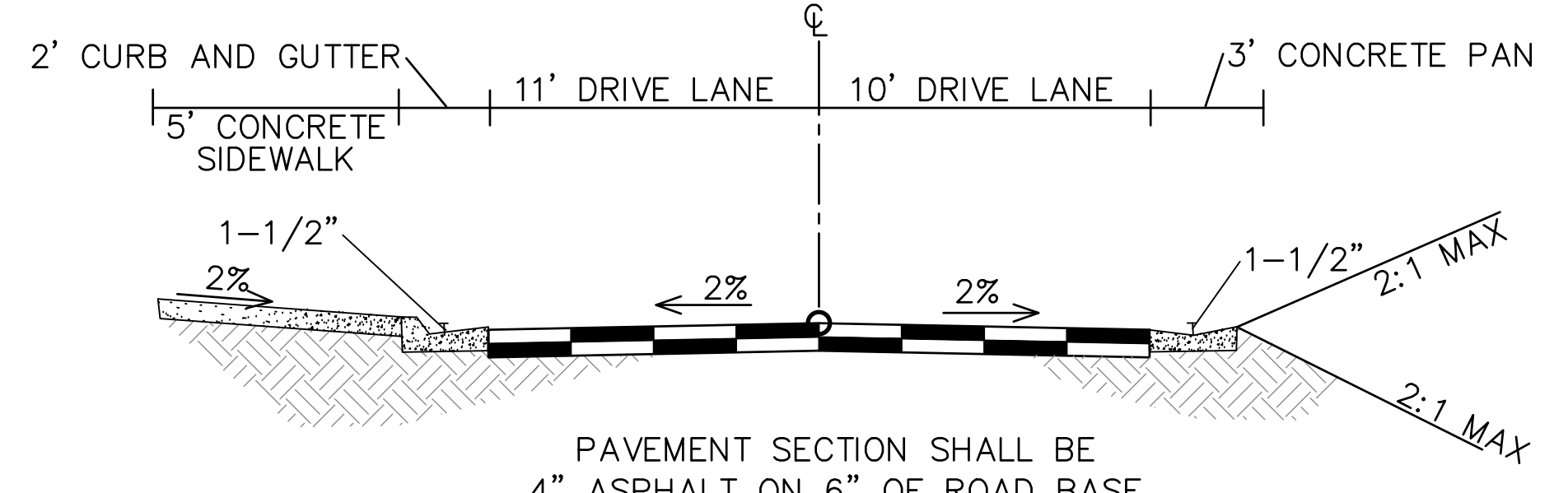
- LEGEND**
- 8650 PROPOSED 2' AND 10' CONTOUR
 - 8652 EXISTING 2' AND 10' CONTOUR
 - PROPOSED STORM SEWER W/ FES
 - EXISTING GAS WITH METER AND VALVE
 - EXISTING WATER WITH METER AND VALVE
 - EXISTING FIRE HYDRANT
 - EXISTING WATER MANHOLE
 - EXISTING SANITARY WITH MANHOLE
 - EXISTING CLEAN OUT
 - EXISTING STORM SEWER MANHOLE
 - EXISTING TELEPHONE PEDESTAL
 - EXISTING TELEPHONE MANHOLE
 - EXISTING SIGNAL BOX
 - EXISTING SIGNAL POLE
 - EXISTING SIGN
 - EXISTING ELECTRIC LINE
 - FL FLOWLINE ELEVATION
 - LP LOW POINT ELEVATION
 - HP HIGH POINT ELEVATION
 - TBC TOP BACK OF CURB
 - EOA EDGE OF ASPHALT
 - TOW TOP OF WALL
 - GEF GROUND ELEVATION AT FACE OF WALL
 - EXISTING WETLANDS
 - EXISTING WETLANDS SETBACK
 - LIMITS OF EXCAVATION
 - PROPOSED RETAINING WALL
 - FLOW ARROW
 - CONSTRUCTION FENCE
 - CURB AND GUTTER



CALL UTILITY NOTIFICATION
CENTER OF COLORADO
811
CALL 2 BUSINESS DAYS IN ADVANCE
BEFORE YOU DIG, GRADE OR EXCAVATE
FOR THE MARKING OF UNDERGROUND
MEMBER UTILITIES.



TYPICAL CLASS 1 GROUND SIGN INSTALLATIONS
N.T.S.



PAVEMENT SECTION SHALL BE
4" ASPHALT ON 6" OF ROAD BASE
SECTION MAY CHANGE PER GEOTECHNICAL RECOMMENDATIONS
SECTION TO BE VERIFIED DURING CONSTRUCTION
TYPICAL TIMBER RANCH ROAD SECTION
N.T.S.

No.	Revision/Issue	Date	Description
1			SKETCH PLAN SUBMITTAL

TEN MILE ENGINEERING, INC.
Professional Civil Engineers
Po Box 1785
Frisco, CO 80443
970.485.5773
Joe@tenmileengineering.com

TIMBER RANCH SUBDIVISION
A RESUBDIVISION OF TRACT 3-B, SAUNDERS SUBDIVISION
SECTION 22, TOWNSHIP 9 SOUTH, RANGE 80 WEST OF 6TH P.M.
LAKE COUNTY, COLORADO
SKETCH SITE PLAN

Project	TIMBER RANCH
Date	4/12/24
Scale	1"=80'
Sheet	1

Lake County School District
328 West 5th Street
Leadville, Colorado 80461
www.lakecountyschools.net

AGENDA COVER MEMO

TO: Board of Education
PRESENTER(S): Paul Anderson
MEMO PREPARED BY: Paul Anderson
INVITED GUESTS: Benefit Health Advisor
TIME ALLOTTED ON AGENDA: 30 minutes
ATTACHMENTS: 1

RE: Health Insurance Renewal, Presentation

TOPIC SUMMARY

Background: Health insurance renewal is being bid to determine the cost for the 2024-25 school year.

Topic for Presentation: Our Benefits Health Advisor will provide an update on the renewal of health plan for the FY25.

Lake County School District
328 West 5th Street
Leadville, Colorado 80461
www.lakecountyschools.net

AGENDA COVER MEMO

TO: Board of Education
PRESENTER(S): Paul Anderson
MEMO PREPARED BY: Paul Anderson
INVITED GUESTS:None
TIME ALLOTTED ON AGENDA: 30 minutes
ATTACHMENTS: 1

RE: District Owned Vacant Land, Presentation

TOPIC SUMMARY

Background: The Lake County School District owns several parcels of vacant land in Lake County.

Topic for Presentation: A presentation will be given to identify potential parcels that the District may consider selling.

Vacant Land April 2024





(1 of 2)

Account: R002209

Owner Name: SCHOOL DISTRICT LAKE CO
R-1

Property Address:
231 LANG
Twin Lakes

Mailing Address:
107 SPRUCE STREET
LEADVILLE
CO
80461

Legal Description:
LOT 8 BLK 6 TWIN LAKES LOT 9 BLK 6
TWIN LAKES, LOT 10 BLK 6 TWIN LAKES N
1/2 LOT 11 BLK 6 TWIN LAKES

[Zoom to](#)



(1 of 2)



Account: R004457

Owner Name: SCHOOL DISTRICT LAKE CO
R-1

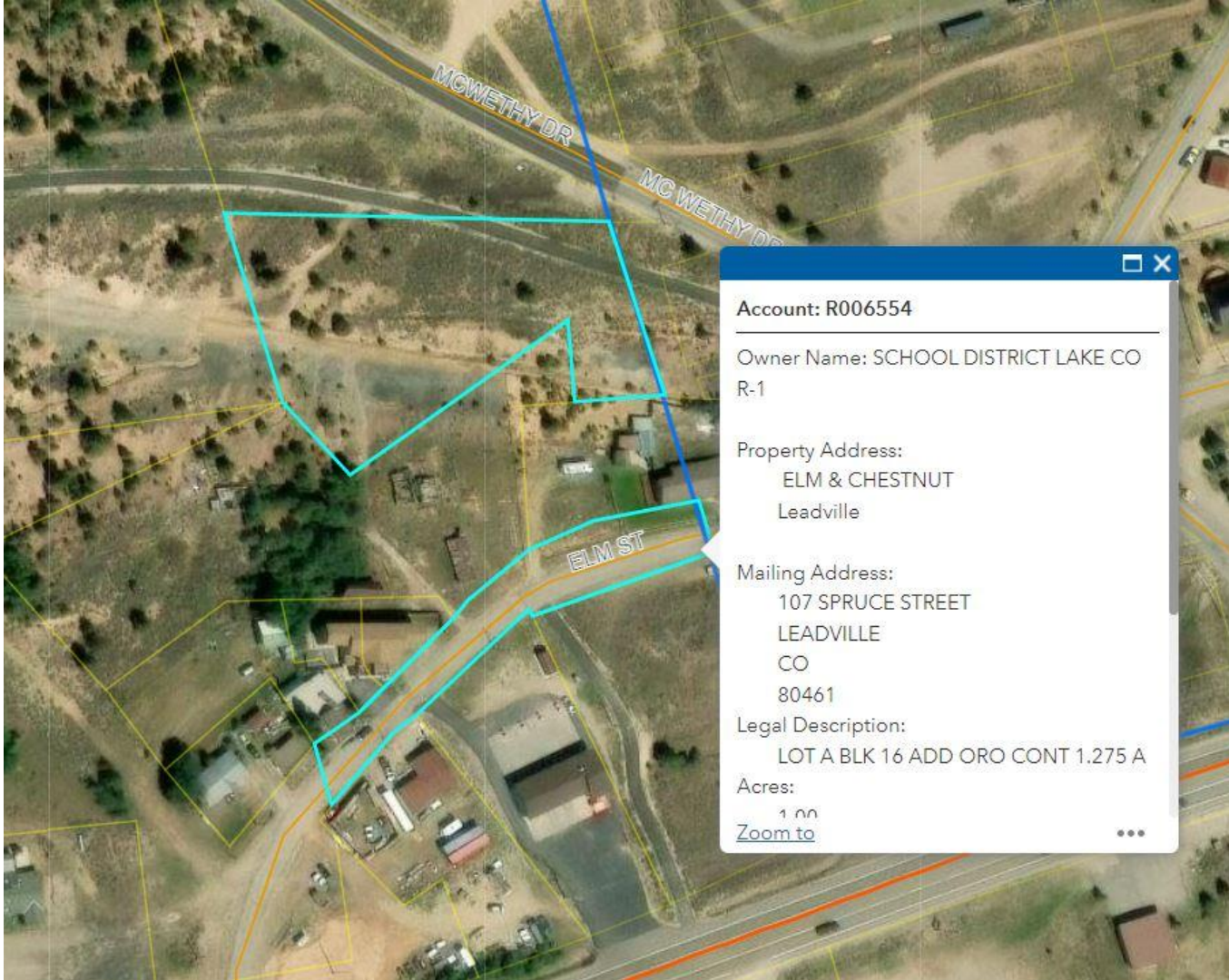
Property Address:
13000 HIGHWAY 24
Leadville

Mailing Address:
107 SPRUCE STREET
LEADVILLE
CO
80461

Legal Description:
#00393 PART MALTA PL 33-09-80 CALIF
.993 A

Access:
[Zoom to](#)





Account: R006554

Owner Name: SCHOOL DISTRICT LAKE CO
R-1

Property Address:
ELM & CHESTNUT
Leadville

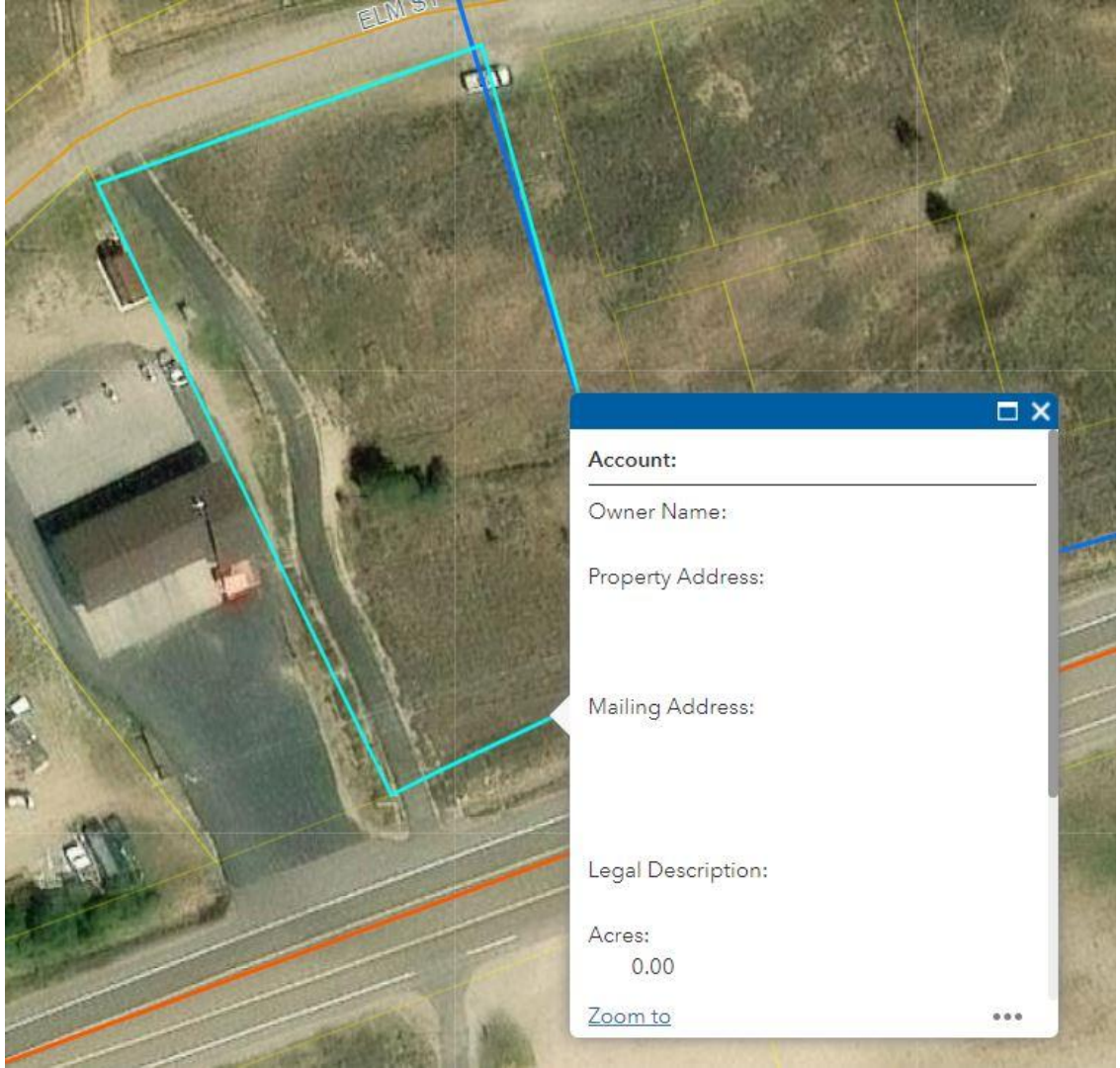
Mailing Address:
107 SPRUCE STREET
LEADVILLE
CO
80461

Legal Description:
LOT A BLK 16 ADD ORO CONT 1.275 A

Acres:
1.00

[Zoom to](#)





Account:

Owner Name:

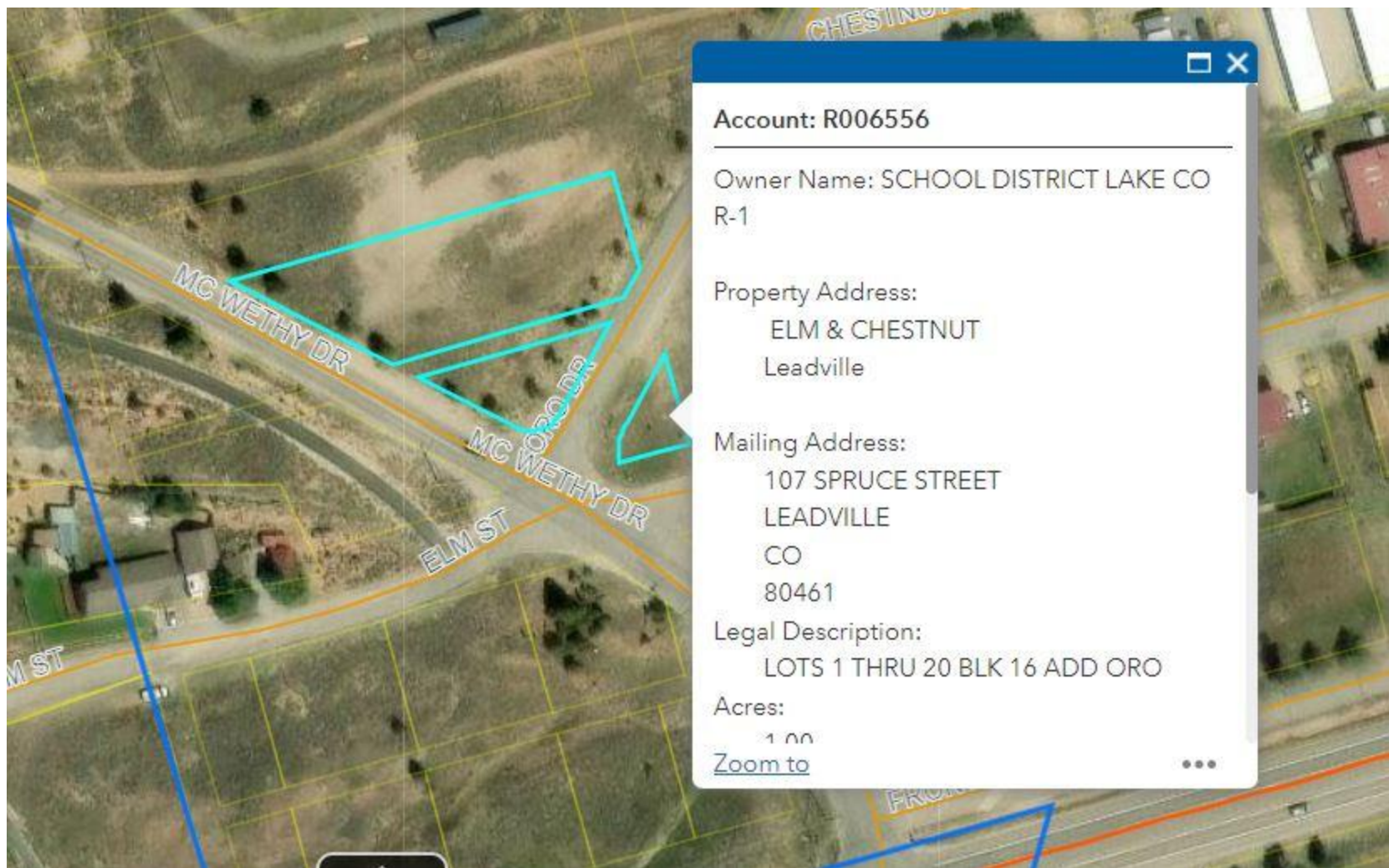
Property Address:

Mailing Address:

Legal Description:

Acres:
0.00

[Zoom to](#) ⋮



Account: R006556

Owner Name: SCHOOL DISTRICT LAKE CO
R-1

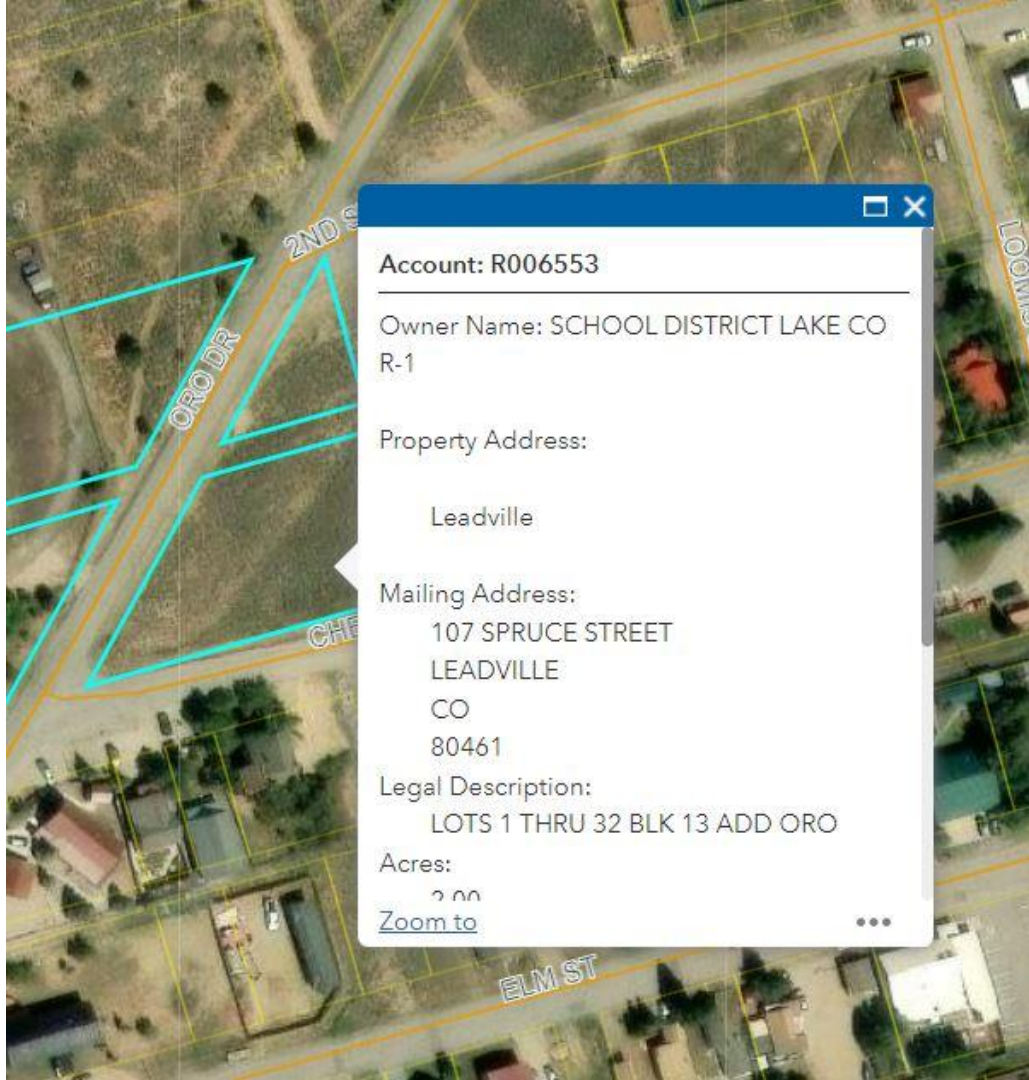
Property Address:
ELM & CHESTNUT
Leadville

Mailing Address:
107 SPRUCE STREET
LEADVILLE
CO
80461

Legal Description:
LOTS 1 THRU 20 BLK 16 ADD ORO

Acres:
1.00

[Zoom to](#) ⋮



Account: R006553

Owner Name: SCHOOL DISTRICT LAKE CO
R-1

Property Address:

Leadville

Mailing Address:

107 SPRUCE STREET
LEADVILLE
CO
80461

Legal Description:

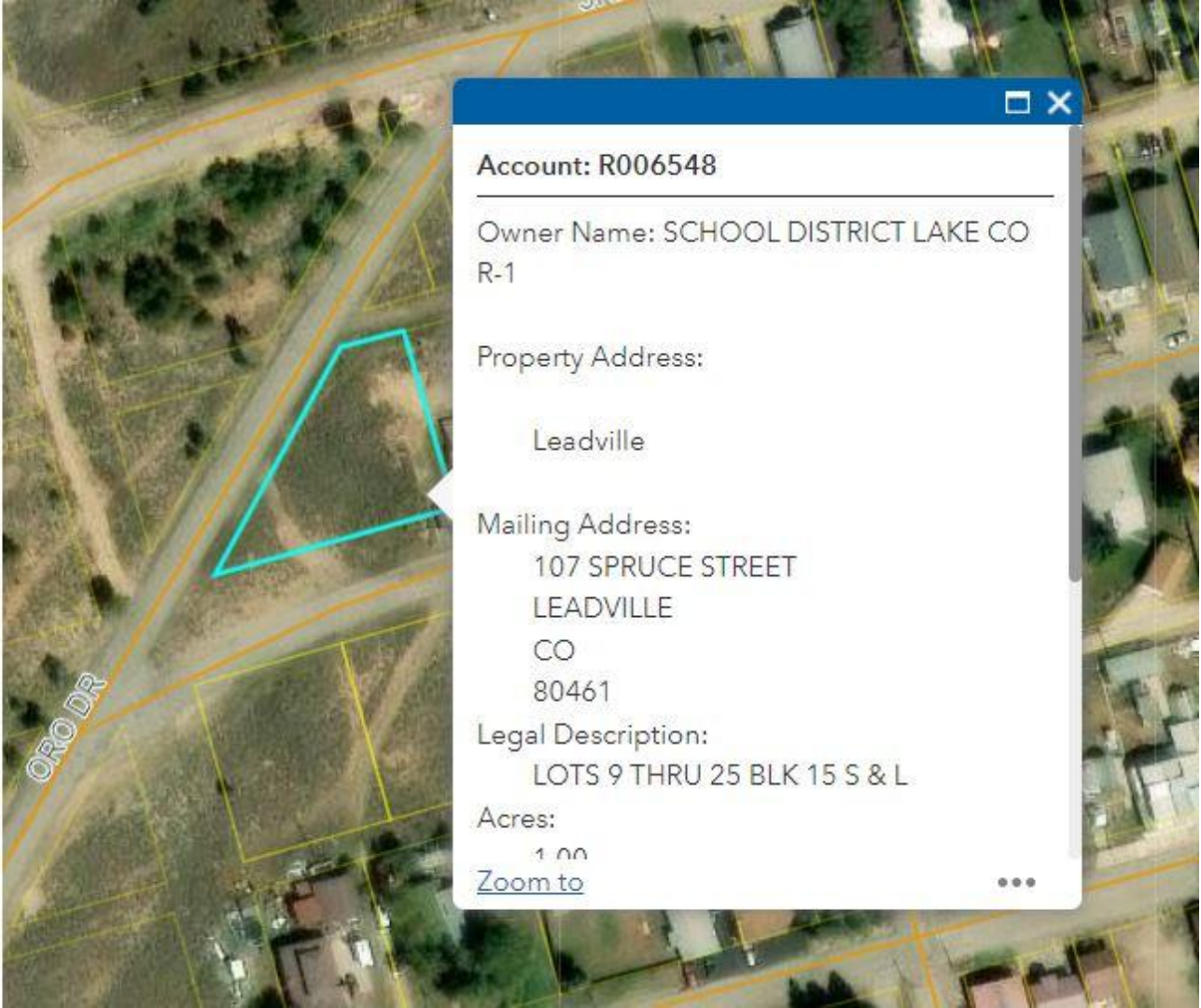
LOTS 1 THRU 32 BLK 13 ADD ORO

Acres:

2.00

[Zoom to](#)





Account: R006548

Owner Name: SCHOOL DISTRICT LAKE CO
R-1

Property Address:

Leadville

Mailing Address:

107 SPRUCE STREET
LEADVILLE
CO
80461

Legal Description:

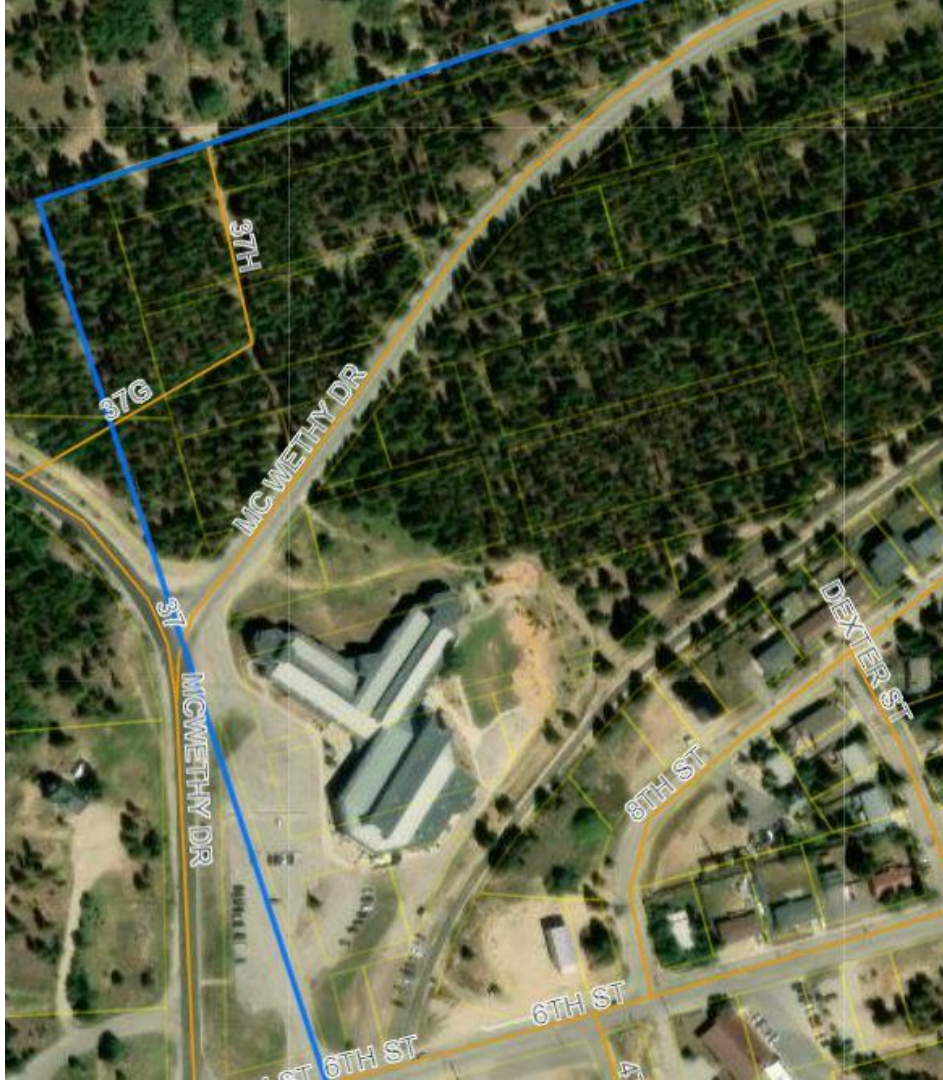
LOTS 9 THRU 25 BLK 15 S & L

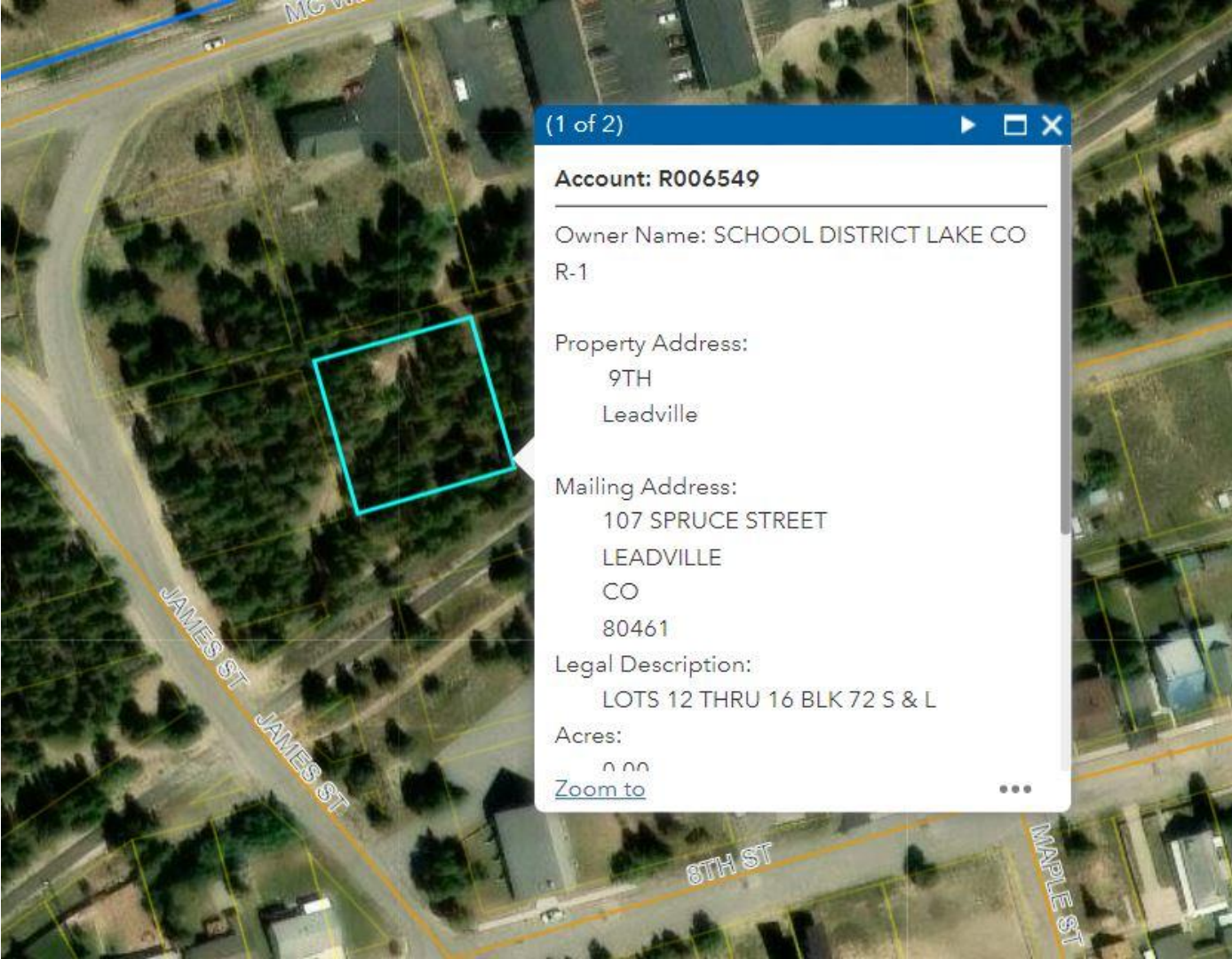
Acres:

1.00

[Zoom to](#)







(1 of 2)



Account: R006549

Owner Name: SCHOOL DISTRICT LAKE CO
R-1

Property Address:

9TH
Leadville

Mailing Address:

107 SPRUCE STREET
LEADVILLE
CO
80461

Legal Description:

LOTS 12 THRU 16 BLK 72 S & L

Acres:

0.00

[Zoom to](#)





ACCOUNT	BUSINESS STREET	NC	DIRECTIO	STREET#	DESIGNAT	LEGAL	SUBNAME	BLOCK	LOT	Price/Acre	LANDACT	IMPACT	ACRES	SQFT	TOTAL ACTUAL VALUE
R002208	Cloud City	440		MCWETHY Drive		#00970 HOMER PLACER 26/27-09-80 CALIF 100.56				\$937	\$94,225	\$11,750	100.56	1322	\$105,975
R002459	Across fro	283		ORO MD & F CO PLAC		#00283 PART ORO MD & F CO PL, 26-09-80 CALIF 4.85 A (SURFACE RIGHTS)				\$50,501	#####	\$-	4.85	0	\$244,930
R004457	MATLTA S	13000 S		HIGHWAY 24		#00393 PART MALTA PL 33-09-80 CALIF .993 A				\$50,501	\$49,996	\$25,000	0.99	500	\$74,996
R002209	TWIN LAKE	231		LANG Street		LOT 8 BLK 6 TWIN LAKES LOT 9 BLK 6 TWIN LAKES, LOT	Twin Lake	6	8	#####	\$91,557	\$34,409	0.6	400	\$125,966
R007670				12TH & PINE STREET		LOTS 109-132, BLOCK 75; LOTS 1200-1218, BLOCK 75	Neusitz	75	109	#####	#####	\$-	3.6	0	\$1,980,000
R006549			W	9TH Street		LOTS 12 THRU 16 BLK 72 S & L	Steven's &	72	12	#####	#####	\$-	0.3	0	\$255,000
R006556				ELM & CHI Street		LOTS 1 THRU 20 BLK 16 ADD ORO	Oro Additi	16	1	#####	#####	\$-	0.8	0	\$680,000
R006552						LOTS 1 THRU 16 BLK 21 S & L	Steven's &	21	1	#####	#####	\$-	0.96	0	\$816,000
R006548						LOTS 9 THRU 25 BLK 15 S & L	Steven's &	15	9	#####	#####	\$-	1.08	0	\$918,000
R006554				ELM & CHI Street		LOT A BLK 16 ADD ORO CONT 1.275 A	Oro Additi	16 A		#####	#####	\$-	1.28	0	\$1,083,750
R006555	FOOTBALL FIELD			CHESTNU Street		LOTS 1 THRU 24 BLK 14 ORO ADD	Oro Additi	14	1	#####	#####	\$-	1.44	0	\$1,224,000
R006558						LOTS 3 THRU 34 BLK 40 S & L	Steven's &	40	3	#####	#####	\$-	1.86	0	\$1,581,000
R006551						LOTS 1 THRU 32 BLK 17 S & L	Steven's &	17	1	#####	#####	\$-	1.92	0	\$1,632,000
R006553						LOTS 1 THRU 32 BLK 13 ADD ORO	Oro Additi	13	1	#####	#####	\$-	1.92	0	\$1,632,000
R006561	HIGH SCHOOL PARKING LOT					LOTS 1 THRU 32 BLK 19 S & L	Steven's &	19	1	#####	#####	\$-	1.92	0	\$1,632,000
R006557						LOTS 1 THRU 34 BLK 23 S & L	Steven's &	23	1	#####	#####	\$-	2.04	0	\$1,734,000
R006560	SCHOOL A	105		SPRUCE Street		LOTS 97, 98 & E 1/2 OF 99 BLK 3 AGZ #1, LOTS 60 THRU	Agassiz #1	3	97	#####	#####	#####	0.69	7220	\$786,500
R006546	SCHOOL E	106		SPRUCE Street		LOTS 94, 95 & 96 BLK 2 AGZ #1 & S & L SUB LOTS 63 THR	Agassiz #1	2	94	#####	#####	#####	0.76	8187	\$1,445,971
R006547	THE CENT	300 W		6TH Street		LOTS 1 THRU 34 BLK 34 S & L	Steven's &	34	1	#####	#####	#####	0.21	35000	\$3,598,350
R006569						LOTS 4 THRU 39 BLK 58 S & L	Steven's &	58	4	#####	#####	#####	2.41	119710	\$13,745,364
R006559	LAKE COUNTY HIGH SCHOOL					LOTS 1 THRU 34 BLK 18 S & L	Steven's &	18	1	#####	#####	#####	2.04	138734	\$15,904,125
R006578	INTERMEDIATE SCHOOL					LOTS 15-30 BLK 59 AND LOTS 17-27 BLK 75	Steven's &	59	15	#####	#####	\$-	0.87	0	\$739,500
R006568	INTERMEDIATE SCHOOL					LOTS 1 THRU 3 BLK 58 S & L PARTIAL LOTS	Steven's &	58	1	#####	\$85,000	\$-	0.1	0	\$85,000
R006570	INTERMEDIATE SCHOOL					PARTIAL LOTS: 11 TO 14 & 31 TO 35 BLK 59 S & L	Steven's &	59	11	#####	#####	\$-	0.28	0	\$238,000
R006564	LAKE COUNTY INTERMEDIATE SCHOOL					PARTIAL LOTS 12, 13, 14, 19 & 20 & 28 THRU 33 BLK 41	Steven's &	41	12	#####	#####	\$-	0.38	0	\$323,000
R006573						PARTIAL LOTS: 8 TO 16 & 28 TO 32 BLK 75 S & L	Steven's &	75	8	#####	#####	\$-	0.41	0	\$348,500
R006566	LAKE COUNTY INTERMEDIATE SCHOOL					PARTIAL LOTS: 13 TO 16 & 24 TO 32 BLK 57 S & L	Steven's &	57	13	#####	#####	\$-	0.45	0	\$382,500
R006567						LOTS 17 TO 23 BLK 57 S & L	Steven's &	57	17	#####	#####	\$-	0.48	0	\$408,000
R006574	LAKE COUNTY INTERMEDIATE SCHOOL					LOTS 1 TO 7 BLK 75 S & L	Steven's &	75	1	#####	#####	\$-	0.48	0	\$408,000
R006565						LOTS 15 TO 18 & 21 TO 27 BLK 41 S & L SUB	Steven's &	41	15	#####	#####	\$-	0.76	0	\$646,000
R006571	LAKE COUNTY INTERMEDIATE SCHOOL					LOTS 1 THRU 10 & 36 THRU 40 BLK 59 S & L	Steven's &	59	1	#####	#####	\$-	0.96	0	\$816,000
R006576	INTERMEDIATE SCHOOL					PARTIAL LOTS 1 THRU 16, INCL. BLK 78 S & L SUB DESC	Steven's &	78	1	#####	#####	\$-	1.1	0	\$935,000
R006575	LAKE COUNTY INTERMEDIATE SCHOOL					PARTIAL LOTS: 1 THRU 21 BLK 77 S & L SUB	Steven's &	77	1	#####	#####	\$-	1.45	0	\$1,232,500
R006550						LOTS 1 THRU 32 BLK 16 S & L	Steven's &	16	1	#####	#####	\$-	1.92	0	\$1,632,000
R006572						LOTS 1 THRU 32 BLK 60 S & L	Steven's &	60	1	#####	#####	\$-	2.2	0	\$1,870,000
R006577	LAKE COUNTY INTERMEDIATE SCHOOL					LOTS 1 THRU 42 BLK 76 S & L	Steven's &	76	1	#####	#####	\$-	2.89	0	\$2,456,500

Lake County School District
328 West 5th Street
Leadville, Colorado 80461
www.lakecountyschools.net

AGENDA COVER MEMO

TO: Board of Education
PRESENTER(S): Paul Anderson
MEMO PREPARED BY: Paul Anderson
INVITED GUESTS: Tamira Jenlink
TIME ALLOTTED ON AGENDA: 15 minutes
ATTACHMENTS: 1

RE: Bus Request, Presentation

TOPIC SUMMARY

Background: The Districts prior bus usage guideline has been to begin discussions at \$17,500 which was equal to annual payment of a 5-year bus lease.

Topic for Presentation: The Leadville Trail 100 is requesting to use approximately 6 buses for a single day (morning). The busing is in response to increase public safety by reducing traffic congestion near the Twin Lakes Dam during the annual 100 mile mountain bike race.

Lake County School District
328 West 5th Street
Leadville, Colorado 80461
www.lakecountyschools.net

AGENDA COVER MEMO

TO: Board of Education
PRESENTER(S): Bethany Massey & Paul Anderson
MEMO PREPARED BY: Bethany Massey
INVITED GUESTS: None
TIME ALLOTTED ON AGENDA: 60 minutes
ATTACHMENTS: 1

RE Budget Update

TOPIC SUMMARY

Background: To honor the request for ongoing budget updates, the following items will be discussed:

- Recommendations toward draft budget
- Finance Committee update
- General update

Topic for Presentation:

Recommendations toward draft budget

There was a discussion at the April 8 Board meeting for budget related data. The board has been provided a slidedeck with the requested information for their review with draft versions of this data being provided as early as 4/17 to allow for time to begin reviewing the content. The topic of discussion will be around the question:

“What specific recommendations from this slide deck does the Board want us to consider as we prepare for the draft budget.”

Finance Committee update

The Finance committee met on April 9th, therefore an item of a committee update has been added to the agenda.

General update

The team has been working on the following:

- Processing letters of intent
- Preparing the slide deck of data
- Continuing conversations with admin regarding staffing for FY23-24 and FY24-25

Budget Update to BOE

April 22, 2024



Discussion Question

What specific recommendations from this slide deck does the Board want us to consider as we prepare for the draft budget.

Student Enrollment Projection

FUNDED PUPIL COUNT	State		Low	Medium	High
FY25 October FTE Count (minus on-line)- enter line V5	843.0	Estimated FY25 FTE	823	843	863
FY24 October FTE Count - enter line V13	873.0		873.0	873.0	873.0
FY23 October FTE Count - enter line V14	900.0		900.0	900.0	900.0
FY22 October FTE Count - enter line V15	925.5		925.5	925.5	925.5
FY21 October FTE Count - enter line V15.1	932.0		932.0	932.0	932.0
AVERAGED FUNDED PUPIL COUNT - enter the greater of line FC1 or	894.7		890.7	894.7	898.7
			0.0	0.0	0.0
			890.7	894.7	898.7
		Variance from FY24	(36.9)	(32.9)	(28.9)
		% Variance from FY24	-4%	-4%	-3%

*Currently planning to use the Medium number for budget planning for June 30 adoption.

Inflation Estimation

Budget items that have been identified as large expenditures that will most likely qualify for an inflation adjustment.

TOTAL: \$940,000

HIGH	MEDIUM	LOW
Inflation rate of 9% of identified expenditures.	Inflation rate of 7% of identified expenditures.	Inflation rate of 5% of identified expenditures.
Budget Increase: \$84,600	Budget Increase: \$65,800	Budget Increase: \$47,000

Deferred Capital Expenditure List (Jan slide)

Capital Reserves - Impact of Proposed Revised Budget

RESULTING DEFERRED MAINTENANCE FOR 2023-24

- Energy Savings
- LCIS Electrical Panel
- Pitts Storm Drain
- Kitchen Equipment
- Emergent Projects
- Chromebook Replacement
- LCHS TVs (prioritize need)
- Teacher Laptops (prioritize need)

[Former] Capital Expenditure Year 2 of 3 Yr Plan

DISTRICT BUILDINGS	\$ 80,000	District Buildings Projects:	
		Asphalt	\$ 10,000
		Emergent projects	\$ 70,000
			\$ 80,000
DISTRICT EQUIPMENT	\$ 17,000	District Equipment Projects:	
		Kitchen	\$ 7,000
		Emergent projects	\$ 10,000
			\$ 17,000
VEHICLES	\$ 60,000	Vehicles Projects:	
		Bus Lease #1	\$ -
		Expedition	\$ 60,000
		Bus Purchase	\$ -
			\$ 60,000
TECHNOLOGY EQUIPMENT	\$ 75,000	Technology Projects:	
		Backup Batteries	\$ 30,000
		Laptop	\$ 10,000
		Chromebook	\$ 30,000
		Emergent Projects	\$ 5,000
			\$ 75,000
TOTAL EXPENSE	\$ 232,000		

[Former] Capital Expenditure Year 3 of 3 Yr Plan

DISTRICT BUILDINGS	\$ 104,000	District Buildings Projects:	
		Asphalt	\$ 24,000
		Emergent projects	\$ 80,000
			\$ 104,000
DISTRICT EQUIPMENT	\$ 17,000	District Equipment Projects:	
		Kitchen Equip	\$ 7,000
		Emergent projects	\$ 10,000
			\$ 17,000
VEHICLES	\$ 150,000	Vehicles Projects:	
			\$ -
		Bus Purchase	\$ 150,000
			\$ 150,000
TECHNOLOGY EQUIPMENT	\$ 96,600	Technology Projects:	
		Chromebook replacement	\$ 30,000
		Laptops	\$ 10,000
		Firewall - ERATE (.2)	\$ 3,000
		WAP - ERATE (.2)	\$ 8,000
		Switch - ERATE (.2)	\$ 24,000
		Emergent Projects	\$ 21,600
			\$ 96,600
Total Expense	\$ 367,600		

Route Bus Fleet

Route Bus #	Year	Make	Passengers	Replace	Age @ Replace
26	2023	Integrated	65		
25	2022	Integrated	65		
24	2020	Integrated	77		
22	2013	Thomas	45	FY30	17
21	2013	Thomas	65	FY29	16
20	2012	Thomas	65	FY28	16
17	2012	Thomas	65	FY27	15
11	2011	International	65	FY26	15
3	2010	Thomas	65	FY25	15
16	2009	Thomas	59	FY24	15
5	2009	International	65	FY23	14

[Proposed] Capital Expenditure 3 Yr Plan

Excludes BEST grant set aside

FY 24-25

+\$118,000
(total recurring \$118,000)

BFB \$0

- \$40,000 Technology
 - Chromebooks
 - Laptops
- \$78,000 Emergent
 - Any not spent is spent on Expedition @\$60,000 carried over for next year's emergent fund

FY 25-26

+\$100,000
(total recurring \$218,000)

BFB \$18,000 (less emergent expenses FY25)

- \$80,000 Technology
 - Chromebooks/Laptops
 - Backup Batteries
 - TV
- \$10,000 Maintenance
 - Asphalt
 - Parking lot maintenance
- \$7,000 Kitchen
 - Equipment
- \$11,000 Deferred Maintenance
 - Pitts Storm Drain
 - Energy Savings
- \$78,000 Expedition from FY24-25 and /or Emergent Projects
- \$32,000 Ending Fund Balance to support bus purchase in 26-27

FY 26-27

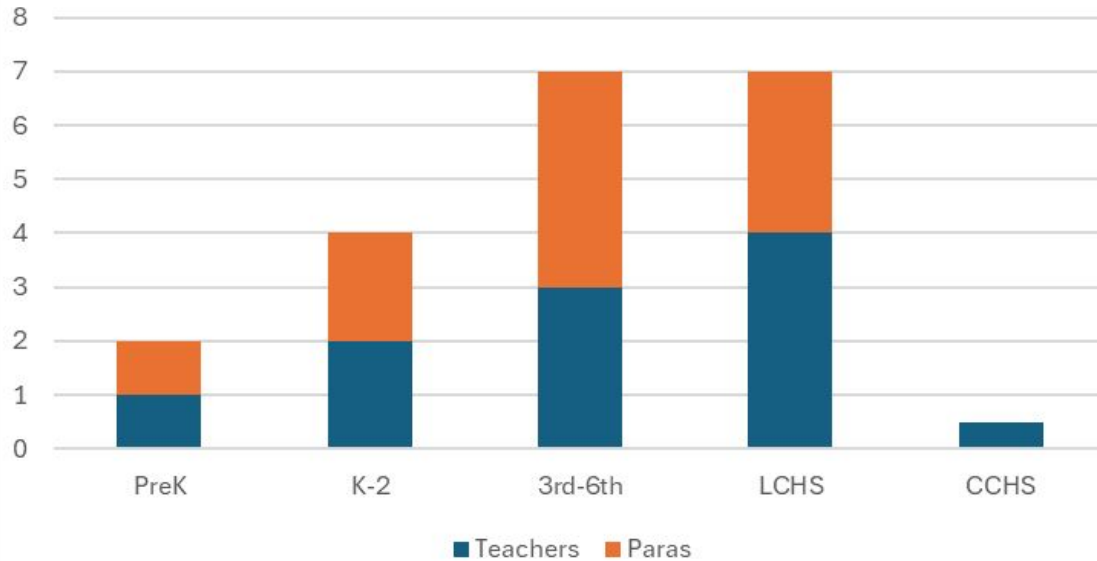
+\$100,000
(total recurring \$318,000)

BFB \$50,000 (anticipated)

- \$150,000 Transportation
 - Bus
- \$80,000 Technology
 - Chromebooks
 - Laptops
 - Firewall/Switch/Access Points/Etc
- \$12,000 Maintenance
 - Asphalt
 - Parking lot maintenance
- \$8,000 Kitchen
 - Equipment
- \$68,000 Emergent Projects

Proposed Staffing for SPED for 2024-25

Proposed SPED Staffing for 2024-25



Not included:

- Speech/Language Pathologists
- School Psychologist
- SPED Deans

Proposed staffing for Teacher #s

ELEMENTARY TEACHERS	13
Elementary Paras	5
Sped Teachers	2
Sped Para	2
Project Dream Site Supervisor	1
Counselor	1
Principal	1
Assist. Principal	1
Secretaries	1.5
Custodians	2.5
Cooks	4

INTERMEDIATE TEACHERS	17
Intermediate Paras	4
Sped Teachers	3
Sped Para	4
Project Dream Site Supervisor	1
Social Worker	1
Principal	1
Assist. Principal	1
Secretaries	2
Custodians	4
Cooks	4

LCHS Teachers	24
High School Paras	4
Sped Teacher	4
Sped Para	3
Project Dream Site Supervisor	1
Counselor	2
Principal	1
Assist. Principal	1
Secretaries	3
Custodians	4
Athletics Director	1
Cooks	6

CCHS Teachers	2
High School Paras	1.75
Sped Teacher	1
Counselor	1
Principal	1
Secretaries	0.75
Custodians	0.25
Bus Drivers	10
Maintenance	3

Superintendent	1
CFO/COO	1
HR	1
Payroll	0.5
Accounting	1
IT	2
Board Secretary/Safety	1
Nurse	1
Data/State Reporting	0.2
Out of School Time	1
Equity Director	1
Custodial Director	1

PreK Teachers	15
SPED Teacher	1
SPED Para	1
Secretary	0.5
Custodian	1
Business Mgr	0.5
Home Visitor	1
*Not shown: coaches, part-time, substitutes	

Health Advisor Presentation

This will be provided by our Health Advisor and is scheduled as it's own BOE Agenda Item.

Fund64 Health claims update to date

This has been requested of our Health Advisor and will be provided during the Health Update which is scheduled as its own BOE Agenda Item.

FY23-24 staffing changes since January

LCES: 3

LCIS: 3

LCHS: 2

CCHS: 0

DO: 2

Transpo: 0

Cooks: 1

Custodian/Maintenance: 2

New Hire Completion /Retention - past 3 years

Full Time New Hire Employee Group	# of new hires	Year of Hire	Finished hire year	return for 2024-2025 *based upon letters of intent	still here on 04/08/2024
Classified	12	2023-2024	10	9	10
AFSCME	6	2023-2024	6	6	6
Certified	14	2023-2024	10	9	9
Admin	2	2023-2024	2	1	2
District Other	3	2023-2024	3	3	3
TOTAL	37		31	28	30
*new hire is new to our district; doesn't include internal transfers					

New Hire Completion/Retention - past 3 years

Full Time New Hire Employee Group	# of new hires	Year of Hire	Finished hire year	return for following year	still here on 04/08/2024
Classified	14	2022-2023	10	9	8
AFSCME	13	2022-2023	8	6	4
Certified	14	2022-2023	11	9	8
Admin	1	2022-2023	1	0	0
District Other	3	2022-2023	3	2	2
TOTAL	45		33	26	22
*new hire is new to our district; doesn't include internal transfers					

New Hire Completion/Retention - past 3 years

Full Time New Hire Employee Group	# of new hires	Year of Hire	Finished hire year	return for following year	still here on 04/08/2024
Classified	14	2022-2023	10	9	8
AFSCME	13	2022-2023	8	6	4
Certified	14	2022-2023	11	9	8
Admin	1	2022-2023	1	0	0
District Other	3	2022-2023	3	2	2
TOTAL	45		33	26	22
*new hire is new to our district; doesn't include internal transfers					

Certified Employee PD Lane Advancements

Lake County School District Teacher PD Lane Advancement Log

For every 8 credit hours (including in-District PD which is offered during paid PD Fridays).

Allowed to submit for advancements in February, June and September;
increase begins immediately upon that pay period.

Lane increase is \$590 at Row A.

Year	Number of column advances
2023-2024	14 (YTD)
2022-2023	18
2021-2022	18
2020-2021	34
as of 02/2024	

Since 2021-2022, eight classified employees have advanced to certified employee status through the alternative licensure or teacher of record process.

Approximate ANNUAL Turnover Data		FULL TIME EMPLOYEES LCSD			2021-2024	
Certified=	employees on scattergram					
Admin =	Super, HR, CFO, COO, Principals, APs, Pre Directors, AFSCME Directors					
Classified =	Building para + preschool +O&M					
AFSCME=	Cooks, custodian, drivers					
District Other=	District staff, IT, admin office, deans, long term subs, grants, Project Dream, etc					
*Employees move due to internal transfers from one group to another - so numbers are approximate						
*Employee's group category may change from year to year (i.e. as of 2022, SSP employees are now in Certified)						
YEAR	Certified @ Opening	Certified Left	Certified Joined	Certified @ Closing	Certified Turnover Rate	
2023-2024	73	5	5	73	6.85%	YTD*
2022-2023	72	4	4	72	5.56%	
2021-2022	66	2	6	70	8.6%	
YEAR	Classified @ Opening	Classified Left	Classified Joined	Classified @ Closing	Classified Turnover Rate	lots of movement
2023-2024	53	9	8	52	27%	YTD*
2022-2023	57	5	12	45	27%	
2021-2022	43	6	11	48	23%	
YEAR	AFSCME @ Opening	AFSCME Left	AFSCME Joined	AFSCME @ Closing	AFSCME Turnover Rate	
2023-2024	32	7	7	32	22%	YTD*
2022-2023	26	4	6	28	21%	
2021-2022	21	5	9	25	36%	
YEAR	Admin @ Opening	Admin Left	Admin Joined	Admin @ Closing	Admin Turnover Rate	
2023-2024	17	2	2	17	12%	YTD*
2022-2023	15	0	1	16	6%	
2021-2022	14	1	3	17	18%	
YEAR	District Other @ Opening	District Other Left	District Other Joined	District Other @ Closing	District Other Turnover Rate	
2023-2024	14	3	4	15	27%	YTD*
2022-2023	18	0	3	21	14%	
2021-2022	18	1	2	19	11%	

New hires by category updated since January 1, 2024 through April 17, 2024

Employee Group:	Number of new hires:
Certified	1
Classified	4
AFSCME	3
District Other	0
Part time (sub/coach/club/Board, etc.)	13

YTD actual/projected expenses and revenues (Red/Black form) plus a list of major under/over since January

Superintendent Turnover (search firm, etc): (\$50,000+)

Transportation/State aid reduction: (\$46,718)

Energy Performance Audit (encumbrance): (\$33,275)

New arrival state aide: \$0-\$75,000

Newly vacated positions yet to be filled: TBD

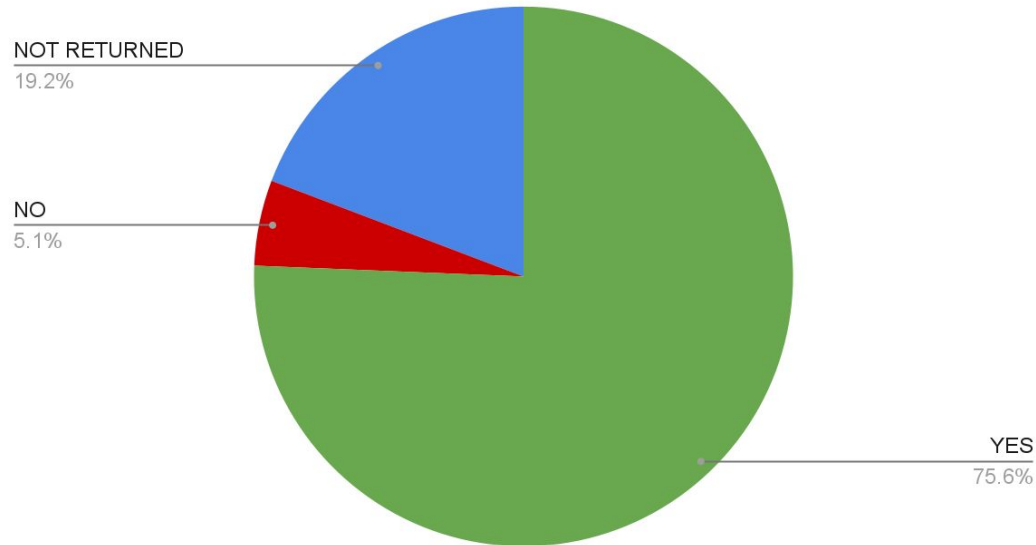
What would it take for the \$112K to be off? What is the likelihood this would happen

	Salary	Medicare	PERA	Total	HEALTH
Current	\$ 9,157,682	\$ 132,786	\$ 1,959,744	\$11,250,212	\$1,193,122
1%	\$ 91,577	\$ 1,328	\$ 19,597	\$ 112,502	\$ 11,931

- Cost of change between family and individual health plan: \$4,752 for average
- Cost of change from no health plan to health plan: \$9,778 to \$14,530 for average
- Based on 4/17 certified letters of intent (not returned), the total variance in salary could be:
 - Low: \$300,000
 - Midpoint: \$74,000
 - High: (\$227,000)
- Based on 4/17 certified letters of intent (not returning), the total variance in salary could be:
 - Low: \$26,430
 - Avg Teacher \$57,384: (\$2,339)
 - High: (\$24,010)

LETTERS OF INTENT RESPONSE RATES

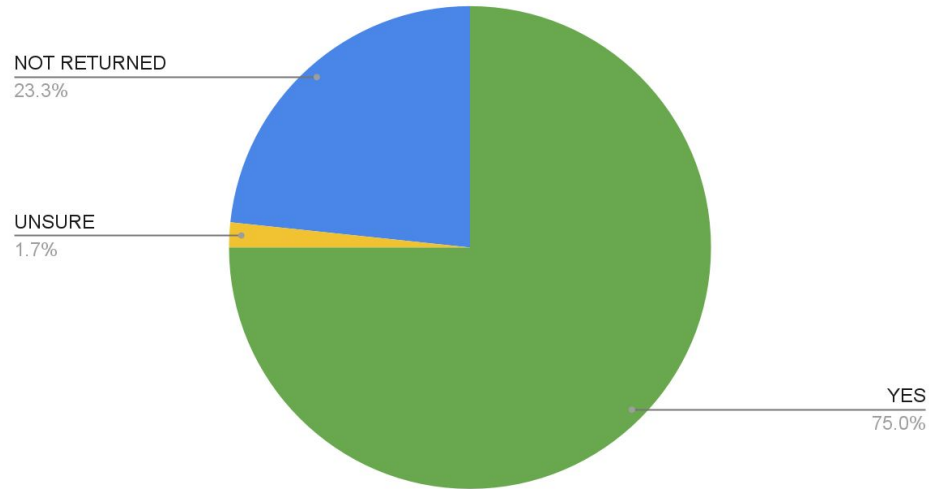
LETTERS OF INTENT RESPONSES - CERTIFIED (79)



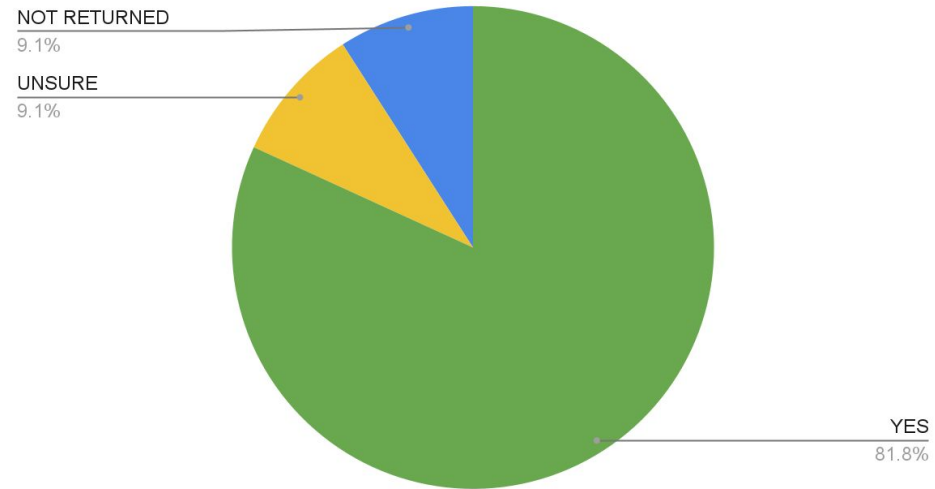
*Currently returned letters of intent have not impacted projected budget.

LETTERS OF INTENT RESPONSE RATES

LETTERS OF INTENT RESPONSES - CLASSIFIED (63)

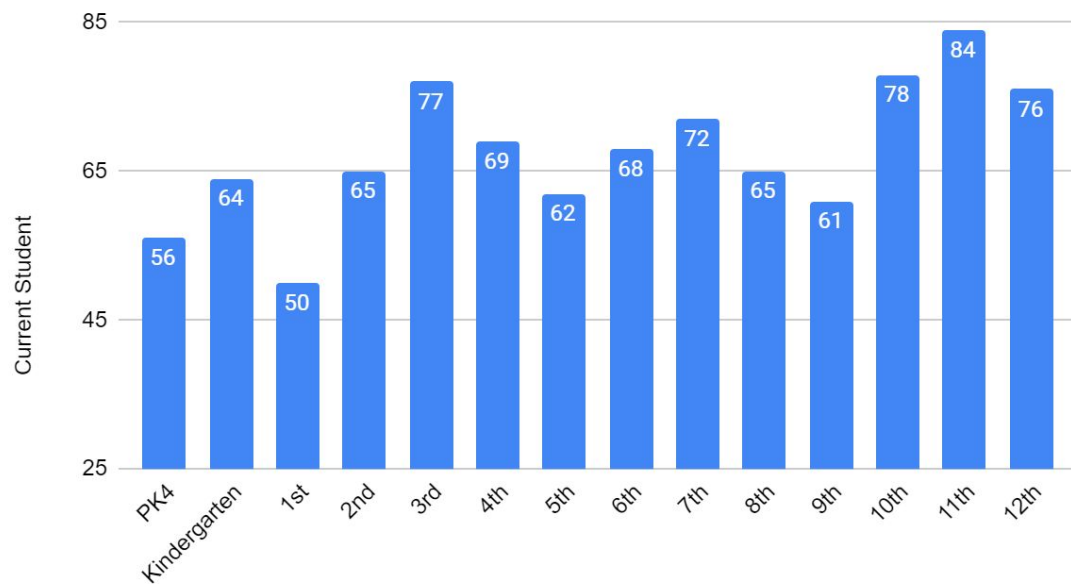


LETTERS OF INTENT RESPONSES - AFSCME (39)



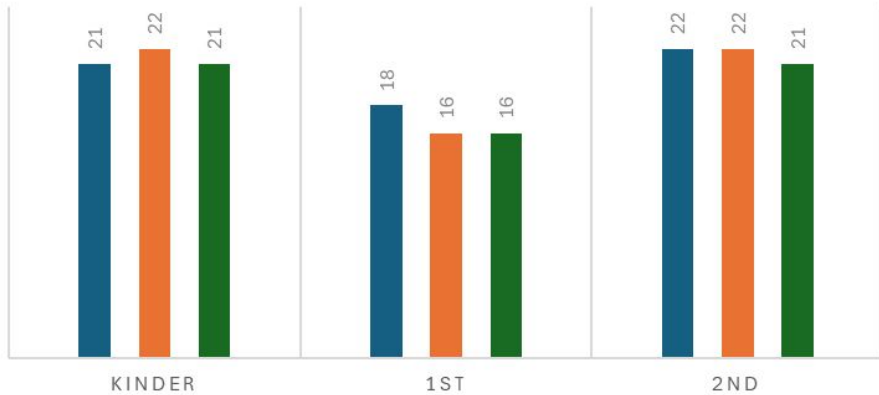
Current Student Count by Grade (snapshot -April)

Current Student Count By Grade (snapshot in time)

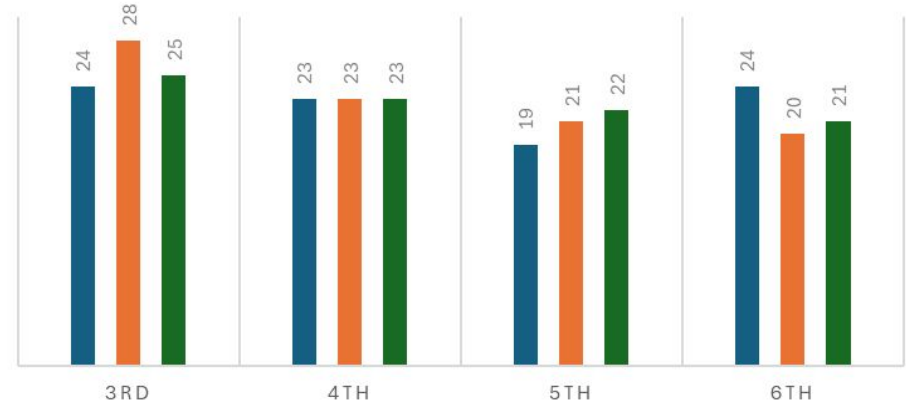


Student to Teacher Ratio @ Elem Level (snapshot-April)

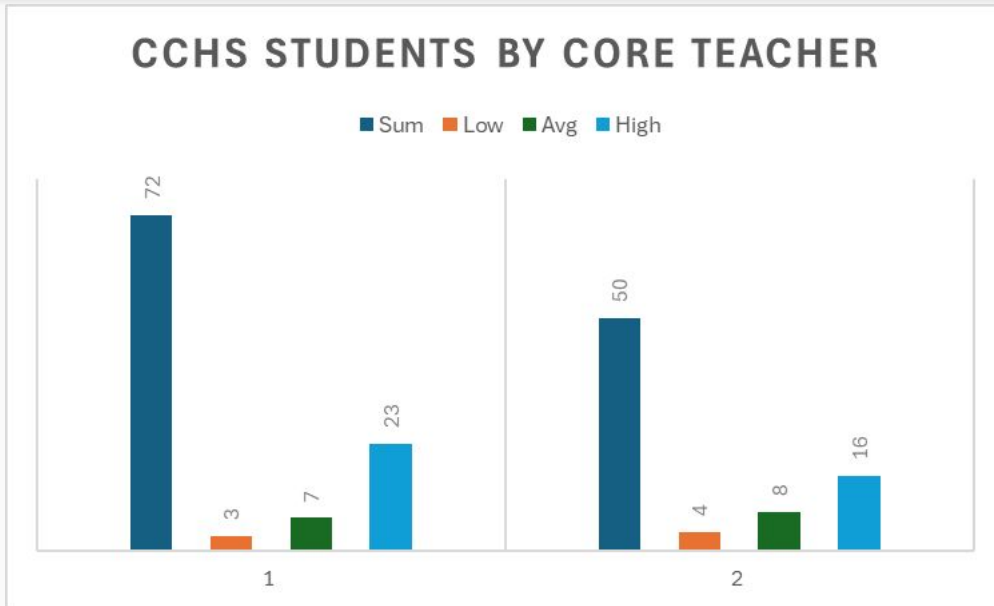
OF STUDENTS BY CLASSROOM
TEACHER @ LCES



OF STUDENTS BY CLASSROOM
TEACHER @ LCIS



of Students by Core Content Teacher @ CCHS

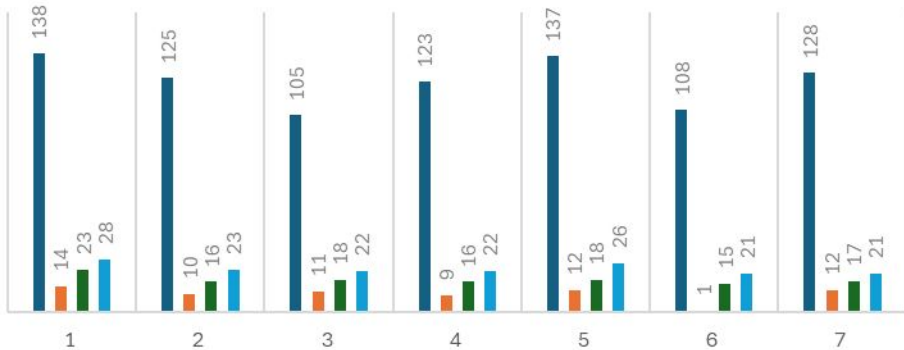


Sum=Total number of students served a day. Low/Avg/High = Class enrollments

of Students by Core Content Teacher @ LCHS

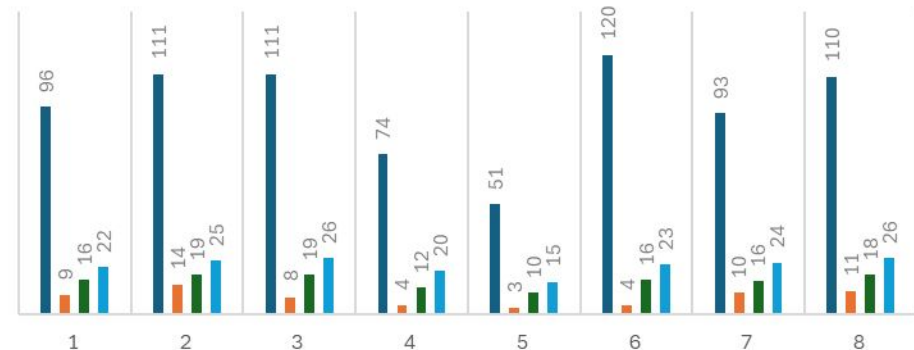
LCHS 7-8 # STUDENTS BY CORE TEACHER

■ Sum ■ Low ■ Avg ■ High



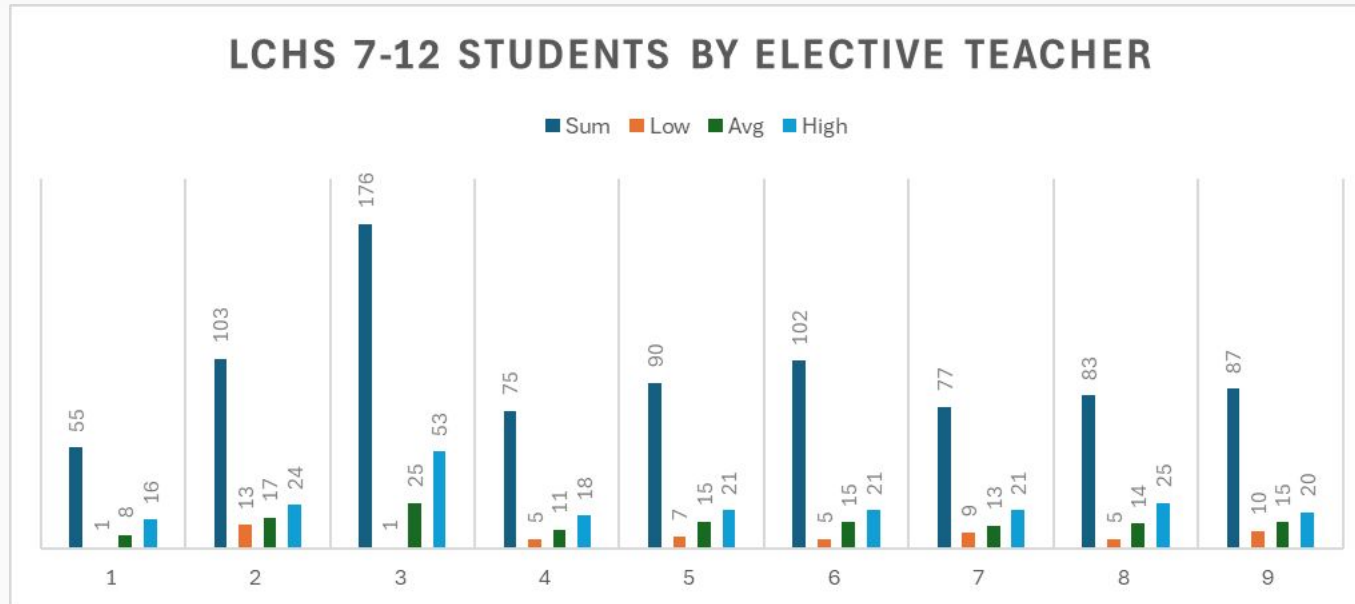
LCHS 9-12 # STUDENTS BY CORE TEACHER

■ Sum ■ Low ■ Avg ■ High



Sum=Total number of students served a day. Low/Avg/High = Class enrollments

of Students by Elective Teacher @ LCHS



Sum=Total number of students served a day. Low/Avg/High = Class enrollments

ACCOUNT REFERENCE SHEET BY OBJECT

01's	All salaries
02's	Health, dental, life, vision insurances, PERA and Medicare benefits
03's	Legal, audit and consulting services
04's	Disposal, snow removal and repairs and maintenance services
05's	Student transportation, all insurances, telephone, postage, advertising, printing and binding, tuition, and travel and registration
06's	General supplies, natural gas and heating expenses, fuel, food, books and periodicals
07's	Equipment
08's	Dues and fees, interest and indirect costs, reserves
52-58	Transfers, allocations and leases

For 03/01/24 - 03/31/24

Expenditure Summary Report

FJEXS01A

Periods 09 - 09

MONTHLY BUDGET STATUS REPORT

BUDGET STATUS(Copy)

<u>Account No/Description</u>	<u>Adjusted Budget</u>	<u>Y-T-D Encumb</u>	<u>Period Expended</u>	<u>Y-T-D Expended</u>	<u>Available Balance</u>	<u>Percent Used</u>
10 GENERAL FUND						
01 SALARIES	7,627,600.00	.00	628,547.06	6,024,099.35	1,603,500.65	78.98
02 BENEFITS	3,015,868.00	.00	227,476.15	2,111,993.45	903,874.55	70.03
03 PROF/TECH SERVICES	809,750.00	27,642.04	66,171.06	679,860.48	102,247.48	87.37
04 PURCHASED SERVICES	166,573.00	.00	41,763.62	132,720.73	33,852.27	79.68
05 OTHER SERVICES	923,944.00	.00	32,855.98	728,399.12	195,544.88	78.84
06 SUPPLIES	920,831.00	25,581.06	19,654.11	591,153.48	304,096.46	66.98
07 EQUIPMENT	27,400.00	.00	152.43	3,803.83	23,596.17	13.88
08 OTHER OBJECTS	2,558,347.00	.00	446.99	26,476.05	2,531,870.95	1.03
10 GENERAL FUND	16,050,313.00	53,223.10	1,017,067.40	10,298,506.49	5,698,583.41	64.50
19 COLO. PRESCHOOL PROGRAM						
01 SALARIES	90,146.00	.00	.00	63,217.12	26,928.88	70.13
02 BENEFITS	32,354.00	.00	.00	26,147.88	6,206.12	80.82
04 PURCHASED SERVICES	2,136.00	.00	.00	1,564.80	571.20	73.26
05 OTHER SERVICES	288,000.00	.00	74.00	336.41	287,663.59	.12
06 SUPPLIES	7,579.00	.00	-191.43	8,624.14	-1,045.14	113.79
19 COLO. PRESCHOOL PROGRAM	420,215.00	.00	-117.43	99,890.35	320,324.65	23.77
21 FOOD SERVICE FUND						
01 SALARIES	400,010.00	.00	36,405.00	291,671.49	108,338.51	72.92
02 BENEFITS	163,551.00	.00	15,754.95	127,346.19	36,204.81	77.86
05 OTHER SERVICES	1,500.00	.00	85.47	841.49	658.51	56.10
06 SUPPLIES	446,548.00	.00	33,547.41	275,642.59	170,905.41	61.73
21 FOOD SERVICE FUND	1,011,609.00	.00	85,792.83	695,501.76	316,107.24	68.75
22 DESIGNATED PURPOSE GRANTS						
01 SALARIES	1,865,055.00	.00	104,859.77	1,038,412.64	826,642.36	55.68
02 BENEFITS	679,112.00	.00	33,574.86	340,476.78	338,635.22	50.14
03 PROF/TECH SERVICES	768,999.00	20,550.00	60,783.78	486,656.60	261,792.40	65.96
05 OTHER SERVICES	184,737.00	.00	13,313.54	48,529.09	136,207.91	26.27
06 SUPPLIES	296,233.00	103.11	13,401.34	237,406.32	58,723.57	80.18
07 EQUIPMENT	40,695.00	26,565.00	.00	.00	14,130.00	65.28
22 DESIGNATED PURPOSE GRANTS	3,834,831.00	47,218.11	225,933.29	2,151,481.43	1,636,131.46	57.33
23 ATHLETIC/ACTIVITY FUND						
08 OTHER OBJECTS	332,054.00	.00	.00	.00	332,054.00	.00
23 ATHLETIC/ACTIVITY FUND	332,054.00	.00	.00	.00	332,054.00	.00
26 THE CENTER - CHILD CARE						
01 SALARIES	221,746.00	.00	19,620.91	129,906.60	91,839.40	58.58
02 BENEFITS	93,569.00	.00	7,027.86	47,116.56	46,452.44	50.35
03 PROF/TECH SERVICES	4,757.00	.00	311.96	2,653.39	2,103.61	55.78
05 OTHER SERVICES	11,131.00	.00	.00	11,130.90	.10	100.00
06 SUPPLIES	90,879.00	37.63	962.67	25,177.01	65,664.36	27.75
08 OTHER OBJECTS	3,500.00	.00	652.17	3,123.13	376.87	89.23
26 THE CENTER - CHILD CARE	425,582.00	37.63	28,575.57	219,107.59	206,436.78	51.49
27 HEAD START PROGRAM						

For 03/01/24 - 03/31/24

Expenditure Summary Report

FJEXS01A

Periods 09 - 09

MONTHLY BUDGET STATUS REPORT

BUDGET STATUS(Copy)

<u>Account No/Description</u>	<u>Adjusted Budget</u>	<u>Y-T-D Encumb</u>	<u>Period Expended</u>	<u>Y-T-D Expended</u>	<u>Available Balance</u>	<u>Percent Used</u>
27 HEAD START PROGRAM						
01 SALARIES	461,775.00	.00	41,695.38	375,073.63	86,701.37	81.22
02 BENEFITS	168,091.00	.00	15,062.79	139,998.86	28,092.14	83.29
03 PROF/TECH SERVICES	47,853.00	3,958.63	13,021.92	49,231.62	-5,337.25	111.15
05 OTHER SERVICES	5,267.00	.00	4,676.30	8,730.91	-3,463.91	165.77
06 SUPPLIES	62,489.00	735.24	19,054.54	76,233.87	-14,480.11	123.17
08 OTHER OBJECTS	187,476.00	.00	.00	673.34	186,802.66	.36
27 HEAD START PROGRAM	932,951.00	4,693.87	93,510.93	649,942.23	278,314.90	70.17
31 BOND REDEMPTION FUND						
08 OTHER OBJECTS	3,710,533.00	.00	.00	279,212.35	3,431,320.65	7.52
09 OTHER USES OF FUNDS	1,135,622.00	.00	.00	1,135,622.00	.00	100.00
31 BOND REDEMPTION FUND	4,846,155.00	.00	.00	1,414,834.35	3,431,320.65	29.19
43 CAPITAL PROJECTS FUND						
03 PROF/TECH SERVICES	3,708.00	.00	.00	3,707.50	.50	99.99
07 EQUIPMENT	269,048.00	141,725.00	10,190.00	115,186.24	12,136.76	95.49
08 OTHER OBJECTS	374,779.00	.00	.00	.00	374,779.00	.00
09 OTHER USES OF FUNDS	19,126.00	.00	.00	.00	19,126.00	.00
43 CAPITAL PROJECTS FUND	666,661.00	141,725.00	10,190.00	118,893.74	406,042.26	39.09
64 HEALTH INSURANCE RESERVE						
05 OTHER SERVICES	2,208,158.00	.00	182,737.03	1,887,636.39	320,521.61	85.48
08 OTHER OBJECTS	90,800.00	.00	.00	.00	90,800.00	.00
64 HEALTH INSURANCE RESERVE	2,298,958.00	.00	182,737.03	1,887,636.39	411,321.61	82.11

		<u>Beginning Balance</u>	<u>Activity</u>	<u>Deposits</u>	<u>Ending Balance</u>
PITTS ELEM./THE CENTER					
The Center Activity Fund	July	\$ 9,540.77	\$ -	\$ -	\$ 9,540.77
907040	August	\$ 9,540.77	\$ -	\$ -	\$ 9,540.77
	September	\$ 9,540.77	\$ 15.18	\$ -	\$ 9,525.59
	October	\$ 9,525.59	\$ -	\$ -	\$ 9,525.59
	November	\$ 9,525.59	\$ -	\$ 6,700.00	\$ 16,225.59
	December	\$ 16,225.59	\$ 2,000.00	\$ -	\$ 14,225.59
	January	\$ 14,225.59	\$ 5,332.62	\$ -	\$ 8,892.97
	February	\$ 8,892.97	\$ -	\$ -	\$ 8,892.97
	March	\$ 8,892.97	\$ 57.13	\$ -	\$ 8,835.84
	April	\$ -	\$ -	\$ -	\$ -
	May	\$ -	\$ -	\$ -	\$ -
	June	\$ -	\$ -	\$ -	\$ -
Pitts Elementary Library Fund	July	\$ 538.90	\$ -	\$ -	\$ 538.90
344727	August	\$ 538.90	\$ -	\$ -	\$ 538.90
	September	\$ 538.90	\$ -	\$ -	\$ 538.90
	October	\$ 538.90	\$ 100.00	\$ 100.00	\$ 538.90
	November	\$ 538.90	\$ -	\$ -	\$ 538.90
	December	\$ 538.90	\$ 89.91	\$ -	\$ 448.99
	January	\$ 448.99	\$ -	\$ -	\$ 448.99
	February	\$ 448.99	\$ -	\$ -	\$ 448.99
	March	\$ 448.99	\$ 354.23	\$ -	\$ 94.76
	April	\$ -	\$ -	\$ -	\$ -
	May	\$ -	\$ -	\$ -	\$ -
	June	\$ -	\$ -	\$ -	\$ -
Lake County Elementary					
LCE Activity Fund	July	\$ 16,564.96	\$ -	\$ 330.69	\$ 16,895.65
316064	August	\$ 16,895.65	\$ 144.90	\$ 2,111.67	\$ 18,862.42
	September	\$ 18,862.42	\$ 1,177.90	\$ 160.84	\$ 17,845.36
	October	\$ 17,845.36	\$ 2,094.39	\$ 2,335.74	\$ 18,086.71
	November	\$ 18,086.71	\$ 1,213.40	\$ 4,447.68	\$ 21,320.99
	December	\$ 21,320.99	\$ 170.29	\$ 1,035.89	\$ 22,186.59
	January	\$ 22,186.59	\$ 38.84	\$ 380.77	\$ 22,528.52
	February	\$ 22,528.52	\$ 4,595.16	\$ 476.86	\$ 18,410.22
	March	\$ 18,410.22	\$ 2,969.88	\$ 773.70	\$ 16,214.04
	April	\$ -	\$ -	\$ -	\$ -
	May	\$ -	\$ -	\$ -	\$ -
	June	\$ -	\$ -	\$ -	\$ -
West Park PTN	July	\$ 416.86	\$ -	\$ -	\$ 416.86
344735	August	\$ 416.86	\$ -	\$ -	\$ 416.86
	September	\$ 416.86	\$ 315.00	\$ -	\$ 101.86
	October	\$ 101.86	\$ 100.39	\$ -	\$ 1.47
	November	\$ 1.47	\$ -	\$ -	\$ 1.47
	December	\$ 1.47	\$ -	\$ -	\$ 1.47
	January	\$ 1.47	\$ -	\$ -	\$ 1.47
	February	\$ 1.47	\$ -	\$ -	\$ 1.47
	March	\$ 1.47	\$ -	\$ -	\$ 1.47
	April	\$ -	\$ -	\$ -	\$ -
	May	\$ -	\$ -	\$ -	\$ -
	June	\$ -	\$ -	\$ -	\$ -

		<u>Beginning Balance</u>	<u>Activity</u>	<u>Deposits</u>	<u>Ending Balance</u>
<u>Lake County Intermediate School</u>					
LCIS Activity Fund	July	\$ 74,680.62	\$ 226.16	\$ 3.17	\$ 74,457.63
8299	August	\$ 74,457.63	\$ 248.32	\$ 2,003.22	\$ 76,212.53
	September	\$ 76,212.53	\$ 2,455.89	\$ 1,999.05	\$ 75,755.69
	October	\$ 75,755.69	\$ 2,571.47	\$ 2,103.89	\$ 75,288.11
	November	\$ 75,288.11	\$ 5,177.86	\$ 5,540.89	\$ 75,651.14
	December	\$ 75,651.14	\$ 991.77	\$ 637.69	\$ 75,297.06
	January	\$ 75,297.06	\$ 1,864.57	\$ 1,337.17	\$ 74,769.66
	February	\$ 74,769.66	\$ 3,000.38	\$ 2,108.07	\$ 73,877.35
	March	\$ 73,877.35	\$ 1,070.61	\$ 3.11	\$ 72,809.85
	April	\$ -	\$ -	\$ -	\$ -
	May	\$ -	\$ -	\$ -	\$ -
	June	\$ -	\$ -	\$ -	\$ -
<u>Lake County High School</u>					
LCHS Activity Fund	July	\$ 119,043.56	\$ 501.34	\$ 965.05	\$ 119,507.27
2102	August	\$ 119,507.27	\$ 206.88	\$ 17,612.31	\$ 136,912.70
	September	\$ 136,912.70	\$ 6,881.40	\$ 410.49	\$ 130,441.79
	October	\$ 130,441.79	\$ 4,238.66	\$ 19,795.74	\$ 145,998.87
	November	\$ 145,998.87	\$ 5,614.85	\$ 4,998.54	\$ 145,382.56
	December	\$ 145,382.56	\$ 5,695.75	\$ 3,949.82	\$ 143,636.63
	January	\$ 143,636.63	\$ 10,704.24	\$ 10,749.06	\$ 143,681.45
	February	\$ 143,681.45	\$ 4,667.67	\$ 11,298.02	\$ 150,311.80
	March	\$ 150,311.80	\$ 7,326.90	\$ 1,566.35	\$ 144,551.25
	April	\$ -	\$ -	\$ -	\$ -
	May	\$ -	\$ -	\$ -	\$ -
	June	\$ -	\$ -	\$ -	\$ -
<u>Lake County Athletics</u>					
LCSD Athletic Activity Fund	July	\$ 80,563.70	\$ 1,420.00	\$ 3.39	\$ 79,147.09
2591636986	August	\$ 79,147.09	\$ 122.49	\$ 170.37	\$ 79,194.97
	September	\$ 79,194.97	\$ 903.82	\$ 10,430.20	\$ 88,721.35
	October	\$ 88,721.35	\$ 5,442.77	\$ 12,678.53	\$ 95,957.11
	November	\$ 95,957.11	\$ 1,955.31	\$ 6,092.39	\$ 100,094.19
	December	\$ 100,094.19	\$ 4,669.02	\$ 3,095.22	\$ 98,520.39
	January	\$ 98,520.39	\$ 7,616.73	\$ 11,313.33	\$ 102,216.99
	February	\$ 102,216.99	\$ 6,968.48	\$ 1,990.73	\$ 97,239.24
	March	\$ 97,239.24	\$ -	\$ 1,218.04	\$ 98,457.28
	April	\$ -	\$ -	\$ -	\$ -
	May	\$ -	\$ -	\$ -	\$ -
	June	\$ -	\$ -	\$ -	\$ -
<u>Cloud City High School</u>					
CCHS	July	\$ 10,427.63	\$ -	\$ 0.45	\$ 10,428.08
2578400962	August	\$ 10,428.08	\$ -	\$ 360.45	\$ 10,788.53
	September	\$ 10,788.53	\$ 285.00	\$ 2,000.49	\$ 12,504.02
	October	\$ 12,504.02	\$ 1,253.36	\$ 0.49	\$ 11,251.15
	November	\$ 11,251.15	\$ 865.83	\$ 112.94	\$ 10,498.26
	December	\$ 10,498.26	\$ 1,545.35	\$ 1,212.36	\$ 10,165.27
	January	\$ 10,165.27	\$ 407.15	\$ 700.44	\$ 10,458.56
	February	\$ 10,458.56	\$ 184.36	\$ 90.41	\$ 10,364.61
	March	\$ 10,364.61	\$ 450.35	\$ 326.43	\$ 10,240.69
	April	\$ -	\$ -	\$ -	\$ -
	May	\$ -	\$ -	\$ -	\$ -
	June	\$ -	\$ -	\$ -	\$ -



APR 09 2024



CONSOLIDATED BILLING CONTROL ACCOUNT STATEMENT

Prepared For	LAKE COUNTY SCHOOL RENA SANCHEZ
Account Number	
Statement Closing Date	04/03/24
Days in Billing Cycle	31
Next Statement Date	05/03/24

For Customer Service Call:
800-231-5511

Inquiries or Questions:
Wells Fargo SBL PO Box 29482
Phoenix, AZ 85038-8650

Payments:
Elite Card Payment Center PO Box 77066
Minneapolis, MN 55480-7766

Credit Line	\$50,000
Available Credit	\$41,810

Payment Information

New Balance	\$8,104.24
Current Payment Due (Minimum Payment)	\$500.00
Current Payment Due Date	04/28/24

Thank you for using our Automatic Payment service. See the **Important Information** section below for your next scheduled payment.

If you wish to pay off your balance in full: The balance noted on your statement is not the payoff amount. Please call 800-231-5511 for payoff information.

Account Summary

Previous Balance		\$17,028.83
Credits	-	\$133.72
Payments	-	\$16,903.68
Purchases & Other Charges	+	\$8,112.81
Cash Advances	+	\$0.00
Finance Charges	+	\$0.00
New Balance	=	\$8,104.24

Wells Fargo Business Card Elite Rewards

Rewards ID:		
Previous Balance		414,046
Points Earned this Month		7,979
Points From Other Company Cards		0
Bonus Points Earned		0
Adjustments		0
Redeemed	-	0
Total Available	=	422,025

Rewards Notice

Check your point balance and redeem your points at wellsfargo.com/businessrewards. You can also call our Rewards Service Center from 8 a.m. to midnight (ET) at 1-800-213-3365.

See reverse side for important information.

5596 0010 YTG 1 7 2 240403 0 PAGE 1 of 6 10 3268 1000 ELAC 01DR5596 43222

DETACH HERE

Detach and mail with check payable to "Wells Fargo" to arrive by Current Payment Due Date.

Make checks payable to: Wells Fargo

Account Number	
New Balance	\$8,104.24
Total Amount Due (Minimum Payment)	\$500.00
Current Payment Due Date	04/28/24

Amount Enclosed:



ELITE CARD PAYMENT CENTER YTG
PO BOX 77066 30
MINNEAPOLIS MN 55480-7766

LAKE COUNTY SCHOOL
RENA SANCHEZ
328 W 5TH ST
LEADVILLE CO 80461-3547

43222
Q303





Rate Information

Your rate may vary according to the terms of your agreement.

TYPE OF BALANCE	ANNUAL INTEREST RATE	DAILY FINANCE CHARGE RATE	AVERAGE DAILY BALANCE	PERIODIC FINANCE CHARGES	TRANSACTION FINANCE CHARGES	TOTAL FINANCE CHARGES
PURCHASES	16.490%	.04517%	\$0.00	\$0.00	\$0.00	\$0.00
CASH ADVANCES	27.240%	.07463%	\$0.00	\$0.00	\$0.00	\$0.00
TOTAL				\$0.00	\$0.00	\$0.00

Important Information

\$0 - \$8,104.24 WILL BE DEDUCTED FROM YOUR ACCOUNT AND CREDITED AS YOUR AUTOMATIC PAYMENT ON 04/28/24. THE AUTOMATIC PAYMENT AMOUNT WILL BE REDUCED BY ALL PAYMENTS POSTED ON OR BEFORE THIS DATE.

Summary of Sub Account Usage

Name	Sub Account Number Ending In	Monthly Spending Cap	Spend This Period
BUNNY TAYLOR		10,000	\$348.83
PAUL ANDERSON		5,000	\$0.00
CHERYL TALBOT		5,000	\$177.29
JOHN MORA		5,000	\$19.99
SCOTT CARROLL		5,000	\$415.21
KATHERINE KERRIGAN		5,000	\$329.96
KATIE PONGREKUN		5,000	\$54.50
JACQUELINE LUJAN		5,000	\$1,276.86
TIMOTHY POWELL		5,000	\$522.35
JOYCE LACOME		5,000	\$0.00
AMY PETERS		5,000	\$2,289.96
KATHLEEN FITZSIMMONS		5,000	\$1,924.56
RENA SANCHEZ		10,000	\$237.83
TAYLOR TRELKA		5,000	\$381.75
BETHANY MASSEY		5,000	\$0.00

Transaction Details

The transactions detailed on this Consolidated Billing Control Account Statement contain transactions made directly to this Control Account plus all transactions made on Sub Accounts. If there were no transactions made by a Sub Account that Sub Account will not appear.

Trans	Post	Reference Number	Description	Credits	Charges
03/28	03/28	F326800F800CHGDDA	AUTOMATIC PAYMENT - THANK YOU	16,903.68	
			TOTAL		\$16,903.68-

Transaction Summary For **BUNNY TAYLOR**
Sub Account Number Ending In

03/05	03/05	2469216EH2Y7GPSMH	WPY*Flash Appointments 855-999-3729 CO		166.75
03/16	03/16	2444500EXBLPHE1WX	WM SUPERCENTER #921 SALIDA CO		22.77
03/23	03/23	2401134F3001KPYPH	ZOOM.US 888-799-9666 WWW.ZOOM.US CA		149.90
04/01	04/01	2413746FD01QT63XZ	USPS PO 0755080403 LEADVILLE CO		9.41
			TOTAL	\$348.83	
			BUNNY TAYLOR / Sub Acct Ending In		

Transaction Summary For **CHERYL TALBOT**
Sub Account Number Ending In

03/15	03/15	7444500EV8R79L8SS	WALMART.COM 8009666546 BENTONVILLE AR	22.43	
03/22	03/22	2422638F32LR29N7R	WAL-MART #1199 AVON CO		162.44
04/01	04/01	2449215FQLR5X60YB	MUSICNOTES.COM 800-944-4667 WI		37.28
			TOTAL	\$177.29	
			CHERYL TALBOT / Sub Acct Ending In		

Transaction Summary For **JOHN MORA**
Sub Account Number Ending In

03/25	03/25	2449215F5LST340WV	ADOBE *ADOBE 408-536-6000 CA		19.99
			TOTAL	\$19.99	
			JOHN MORA / Sub Acct Ending In		

Transaction Details

Trans Post Reference Number Description Credits Charges

Transaction Summary For **SCOTT CARROLL**
Sub Account Number Ending In

03/21	03/21	2423168F2RBGJJLPX	SAFEWAY #2824 LEADVILLE CO		88.33
03/21	03/21	2426979F2010DEYLR	HIGH MOUNTAIN PIES LEADVILLE CO		326.88
			TOTAL \$415.21		
			SCOTT CARROLL / Sub Acct Ending In		

Transaction Summary For **KATHERINE KERRIGAN**
Sub Account Number Ending In

03/06	03/06	2449398EKBLTK7W2D	BIG R OF LEADVILLE, LLC LEADVILLE CO		25.00
03/21	03/21	2469216F231PBVBDE	SOUTHWES 5262271393075800-435-9792 TX		179.98
		04/12/24	KERRIGAN/KATHERINE		
		1 WN P	DENVER BURBANK		
03/21	03/21	2469216F231PBVBDE	SOUTHWES 5262271394733800-435-9792 TX		124.98
		04/16/24	KERRIGAN/KATHERINE		
		1 WN F	SAN DIEGO DENVER		
			TOTAL \$329.96		
			KATHERINE KERRIGAN / Sub Acct Ending In		

Transaction Summary For **KATIE PONGREKUN**
Sub Account Number Ending In

03/07	03/07	2469216EK2ZTB2ZPY	IN *AMERICAN BIOIDENTITY,303-8864747 CO		54.50
			TOTAL \$54.50		
			KATIE PONGREKUN / Sub Acct Ending In		

Transaction Summary For **JACQUELINE LUJAN**
Sub Account Number Ending In

03/04	03/04	2469216EG2XDVL3DJ	TRAVELOCITY*7277440096 tvly.com WA		19.00
03/04	03/04	2469216EH2Y0RWX5E	UNITED 0162369766409 UNITED.COM TX		118.20
		05/10/24	JELF/MARY		
		1 UA K	DENVER SALT LAKE CITY		
		2 UA G	SALT LAKE CITY DENVER		
03/04	03/04	2473309EH2M02TZYP	CO GOVT SERVICES EGOV.COM CO		62.12
03/09	03/09	2469216EN31VXSZ3H	MARRIOTT DENVER TECH C DENVER CO		160.90
03/09	03/09	2469216EN31VXSZ39	MARRIOTT DENVER TECH C DENVER CO		160.90
03/09	03/09	2469216EN31VXSZ4B	MARRIOTT DENVER TECH C DENVER CO		107.24
03/09	03/09	2469216EN31VXSZ4J	MARRIOTT DENVER TECH C DENVER CO		107.24
03/09	03/09	2469216EN31VXSZ43	MARRIOTT DENVER TECH C DENVER CO		107.26
03/21	03/21	2401134F1001HELGE	IMNSOLUTIONS.COM HTTPSIMNSOLUT VA		50.00
03/29	03/29	2407140F9ADT5JN3N	PROCARE SOFTWARE 541-8583399 OR		384.00
			TOTAL \$1,276.86		
			JACQUELINE LUJAN / Sub Acct Ending In		

Transaction Summary For **TIMOTHY POWELL**
Sub Account Number Ending In

03/07	03/07	2463923ELS66QGH9J	ELECTRO-MECH SCOREBOARD C478-8643366 GA		169.00
03/13	03/13	2463923ESS66QWPYL	ELECTRO-MECH SCOREBOARD C478-8643366 GA		33.00
03/30	03/30	2469216FA2Y10YHTP	L & L KILN MFG., INC. 856-294-0077 NJ		320.35
			TOTAL \$522.35		
			TIMOTHY POWELL / Sub Acct Ending In		

Transaction Summary For **AMY PETERS**
Sub Account Number Ending In

03/03	03/04	2476062EG6PQNJ8PQ	RIVERSIDE TROPHIES LLC salida CO		209.65
03/05	03/05	2401134EH001QXV6H	AMAZON RET* 114-954731 WWW.AMAZON.CO WA		151.84
03/11	03/11	2401134EP000BMX5T	NFHSNTWRK* C6CF07647AU HTTPSNFHSNETW GA		12.82
03/18	03/18	2449215EYLRTKX59Q	MFAC, LLC 401-942-9363 RI		155.25
03/18	03/18	2469216EY2YH0DVNQ	AMZN Mktp US*R61304GM1 Amzn.com/bill WA		180.41
03/20	03/20	2470780F00FVKN2R2	SPORTDECALS 800-435-6110 IL		111.00
03/21	03/21	2449216F1000N0QF2	HALF PRICE BANNERS HTTPSWWW.HALF MO		48.90
03/23	03/23	2444500F4EJ7WGYTW	WENDY'S 4711 CANON CITY CO		31.28
03/25	03/25	2423168F6RBGJVVLRL	SAFEWAY #2824 LEADVILLE CO		3.40
03/25	03/25	2444500F600VWTWS4	FAMILY DOLLAR LEADVILLE CO		13.75
03/26	03/26	2423168F7RBGJ6A3W	SAFEWAY #2824 LEADVILLE CO		33.88
03/29	03/29	2475542FA85KG2JHB	WESTIN (WESTIN HOTELS) 303-4105000 CO		300.98
03/29	03/29	2475542FA85KG2JH3	WESTIN (WESTIN HOTELS) 303-4105000 CO		300.98
03/29	03/29	2475542FA85KG2JTB	WESTIN (WESTIN HOTELS) 303-4105000 CO		300.98
03/29	03/29	2475542FA85KG2K6S	WESTIN (WESTIN HOTELS) 303-4105000 CO		300.98
03/30	03/30	2403454FA03BB2LZM	PHILLIPS 66 - STOP N SAVE VAIL CO		71.82
04/02	04/02	2469216FD2XG5SDZQ	SCHOOL HEALTH CORP 866-323-5465 IL		70.61
04/02	04/02	7469216FD2XG5SE7G	SCHOOL HEALTH CORP 866-323-5465 IL	8.57	
			TOTAL \$2,289.96		
			AMY PETERS / Sub Acct Ending In		

Transaction Summary For **KATHLEEN FITZSIMMONS**
Sub Account Number Ending In

03/02	03/04	2469216EF35TWBDFQ	STARBUCKS STORE 09554 THORNTON CO		12.74
03/02	03/04	2475542EF7JPJ7B5M	DOUBLETREE HOTELS THORNTON CO		114.00
03/07	03/07	2469216EK2ZTB2ZLV	IN *AMERICAN BIOIDENTITY,303-8864747 CO		381.50





Transaction Details

Trans	Post	Reference Number	Description	Credits	Charges
03/11	03/11	2479338EP02GKJP4J	Indeed 90125856 800-4625842 TX		506.78
03/23	03/23	2479338F300HZY7K5	Indeed 90368719 800-4625842 TX		500.53
04/01	04/01	2479338FQ013W95PB	Indeed 90573071 800-4625842 TX		409.01
			TOTAL \$1,924.56		
KATHLEEN FITZSIMMONS / Sub Acct Ending In					

Transaction Summary For **RENA SANCHEZ**
Sub Account Number Ending In

04/02	04/02	2400594FD8R3DNXL2	GOVERNMENT FINANCE OFFIC CHICAGO IL		160.00
04/02	04/02	2427539FDS66EB85S	POSITIVE PROMOTIONS 800-6352666 NY		77.83
			TOTAL \$237.83		
RENA SANCHEZ / Sub Acct Ending In					

Transaction Summary For **TAYLOR TRELKA**
Sub Account Number Ending In

03/06	03/06	2444500EKEJ3PNSMK	FAMILY DOLLAR LEADVILLE CO		15.00
03/10	03/10	2444500EPEJ464K65	FAMILY DOLLAR LEADVILLE CO		12.56
03/11	03/11	2449216EP0013XY3E	MOIDENVER.COM HTTPSMOIDENVE CO		385.20
03/12	03/12	2449216ET000X0LRW	MOIDENVER.COM HTTPSMOIDENVE CO	102.72	
03/18	03/18	2423168EZRBGJN58Y	SAFEWAY #2824 LEADVILLE CO		71.71
			TOTAL \$381.75		
TAYLOR TRELKA / Sub Acct Ending In					

Vendor Detail Report

Vendor	Check Key	Check Date	Invoice No	Po No	Description	Account No	Amount
401 (K) VOL. INVESTMENT PLAN		175					
	0100639518	03/26/24	03-26-2024_4		3/401K	4-10-000-00-0000-7477-000-000000	4,254.42
						Check Total	4,254.42
						Vendor Total	4,254.42
ACORN PETROLEUM, INC.		270					
	0100102374	03/07/24	1243108		2/15-2/29 FUEL BUS 10 50%	4-27-971-02-3330-0580-000-008600	81.43
	0100102374	03/07/24	1243108		2/15-2/29 FUEL BUS 10 50%	4-22-602-00-2100-0610-000-009414	81.43
	0100102374	03/07/24	1243108		2/15-2/29 FUEL BUS 2 50%	4-22-100-00-2100-0510-000-008287	31.01
	0100102374	03/07/24	1243108		2/15-2/29 FUEL BUS 2 50%	4-22-101-01-2100-0510-000-007287	31.00
	0100102374	03/07/24	1243108		2/15-2/29 FUEL EARLY PAY DISCOUNT	4-10-720-27-2700-0626-000-000000	-15.71
	0100102374	03/07/24	1243108		2/15-2/29 FUEL	4-10-720-27-2700-0626-000-000000	2,043.42
	0100102374	03/07/24	001241891		FUEL FOR LOADER	4-10-710-26-2600-0626-000-000000	97.18
	0100102374	03/07/24	1243108		2/15-2/29 FUEL	4-10-710-26-2600-0626-000-000000	379.25
						Check Total	2,729.01
						Vendor Total	4,818.02
	0100102458	03/29/24	1245443		3/1-3/15/FUEL BUS 2 50%	4-22-101-01-2100-0510-000-007287	135.51
	0100102458	03/29/24	1245443		3/1-3/15/FUEL BUS 2 50%	4-22-100-00-2100-0510-000-008287	135.51
	0100102458	03/29/24	1245443		3/1-3/15/FUEL	4-10-720-27-2700-0626-000-000000	1,400.71
	0100102458	03/29/24	1245443		3/1-3/15/FUEL	4-10-710-26-2600-0626-000-000000	417.28
						Check Total	2,089.01
						Vendor Total	4,818.02
ACT		427					
	0100102375	03/07/24	1313574		WORKKEYS	4-10-602-10-0090-0340-000-000000	65.00
	0100102375	03/07/24	1309352		WORKKEYS	4-10-602-10-0090-0340-000-000000	559.00
	0100102375	03/07/24	1312781		WORKKEYS	4-10-602-10-0090-0340-000-000000	13.00
						Check Total	637.00
						Vendor Total	637.00
AFSCME COUNCIL 18		257					
	0100102451	03/26/24	26-MAR-24		PAYROLL LIABILITIES	4-27-000-00-0000-7421-000-000000	9.00
	0100102451	03/26/24	26-MAR-24		PAYROLL LIABILITIES	4-21-000-00-0000-7421-000-000000	217.50
	0100102451	03/26/24	26-MAR-24		PAYROLL LIABILITIES	4-10-000-00-0000-7421-000-000000	121.50
						Check Total	348.00
						Vendor Total	348.00

Vendor Detail Report

Vendor	Check Key	Check Date	Invoice No	Po No	Description	Account No	Amount
ALPHA SECURITY		31151					
	0100102376	03/07/24	12610	240362	PROJECT - CAMERA ADDITIONS	4-43-602-00-4000-0720-000-000000	6,885.00
	0100102376	03/07/24	12638	240362		4-27-971-23-3330-0610-000-008600	3,580.00
	0100102376	03/07/24	12638	240362	PROJECT - CAMERA ADDITIONS	4-43-602-00-4000-0720-000-000000	3,305.00
						Check Total	<u>13,770.00</u>
						Vendor Total	<u>13,770.00</u>

Check Date 03/01/24 - 03/31/24

Vendor Detail Report

FMVEN10A

Vendor	Check Key	Check Date	Invoice No	Po No	Description	Account No	Amount
AMAZON.COM		4304					
	0100102377	03/07/24	17XX-T74M-71XD	240564	CLASSROOM AND ADMIN SUPPLIES	4-26-971-33-3310-0610-000-000000	45.97
	0100102377	03/07/24	1WDX-H39T-V7Q9	240567	PLEASE SEE ORDER #111-6962598-0355424	4-10-101-10-0010-0610-000-000000	62.30
	0100102377	03/07/24	1VFD-FJLR-FVJT	240557	BLACK INK TONER FOR BUS BARN PRINTER	4-10-720-27-2700-0610-000-000000	885.29
	0100102377	03/07/24	1LJY-YVRN-RYMX	240543	HERSHEY'S, KIT KAT AND REESE'S ASSORTED	4-10-301-14-1800-0610-000-000000	140.76
	0100102377	03/07/24	1JV1-RTY3-NFX1	240559	M.CATES ITEMS	4-10-100-10-0010-0610-000-000000	65.39
	0100102377	03/07/24	1C6J-4VJG-KH9W	240577	TEACHERS GUISE TO TRAUMA: 20 THINGS KID	4-10-602-20-2213-0350-000-000000	150.24
	0100102377	03/07/24	1JLY-HPD7-F3RY	240576	ITEMS FOR CHRISTY T.	4-10-100-10-0010-0610-000-000000	88.65
	0100102377	03/07/24	17XX-T74M-71XD	240564		4-27-971-24-3330-0610-000-008600	85.36
	0100102377	03/07/24	1PGV-RWT1-39N6	240560	FRONT OFFICE SUPPLIES	4-10-100-24-2410-0610-000-000000	91.96
					Check Total		1,615.92
	0100102434	03/20/24	1TKF-J9V9-9PPF	240249	AMAZON CART # 8 119 ITEMS	4-22-301-02-0030-0610-000-005371	-14.99
	0100102434	03/20/24	1YGV-J1V9-9XQV	240249	AMAZON CART # 8 119 ITEMS	4-22-301-02-0030-0610-000-005371	-14.99
	0100102434	03/20/24	1VMH-KCYH-4NFH	240582	LANYARDS	4-10-602-00-0090-0610-000-001210	130.23
	0100102434	03/20/24	1XGV-F694-3VWK	240588	PREP WORK TABLE	4-21-740-31-3100-0610-000-000000	199.98
	0100102434	03/20/24	1DW9-TLK7-F19C	240584	VEVOR 36 SLOTS CELL PHONE CABINET SILVER	4-10-301-24-2410-0610-000-000000	135.98
	0100102434	03/20/24	1LWV-N9X1-6R76	240581	SOCCER SHIN GUARDS FOR BOYS INCL. SLEEVE	4-10-301-14-1826-0610-000-000000	116.09
	0100102434	03/20/24	1DQ9-KK3L-NTXX	240585	OFFICE/TEACHER SUPPLIES	4-10-100-10-0010-0610-000-000000	30.83
	0100102434	03/20/24	1DQ9-KK3L-NTXX	240585		4-10-100-10-0800-0610-000-000000	26.58
	0100102434	03/20/24	1DQ9-KK3L-NTXX	240585		4-10-100-12-1700-0610-000-003130	18.99
	0100102434	03/20/24	1DQ9-KK3L-NTXX	240585		4-10-100-24-2410-0610-000-000000	149.99
	0100102434	03/20/24	1QHG-HRP1-1XTM	240547	TEACHER/OFFICE/WINTER CLOTHES	4-10-100-10-0010-0610-000-000000	352.09
	0100102434	03/20/24	1QHG-HRP1-1XTM	240547		4-10-100-24-2410-0610-000-000000	2.15
	0100102434	03/20/24	1JMC-HPRV-JY3C	240547	TEACHER/OFFICE/WINTER CLOTHES	4-10-100-10-0010-0610-000-000000	34.89
	0100102434	03/20/24	1JMC-HPRV-JY3C	240547		4-10-100-24-2410-0610-000-000000	134.99
	0100102434	03/20/24	1K6Q-3RKP3-G9DJ	240547	TEACHER/OFFICE/WINTER CLOTHES	4-10-100-10-0010-0610-000-000000	-34.89
	0100102434	03/20/24	16RH-MMYG-N3P4	240407	K2 WINTER CLOTHING	4-10-100-10-0010-0610-000-000000	36.99
	0100102434	03/20/24	17LC-XXLL-4RQN	240580	HEALTH SUPPLIES	4-10-602-20-2130-0610-000-000000	70.70
	0100102434	03/20/24	17LC-XXLL-4RQN	240580		4-22-602-00-2100-0610-000-003277	2,500.00
	0100102434	03/20/24	164L-M3PK-1KR1	240509	MAINTENANCE SPPLY	4-10-710-26-2600-0610-000-000000	45.73
	0100102434	03/20/24	17ML-4M66-NXYT	240323	CLASSROOM ALLOWANCE - ART SPECIALS	4-19-971-00-0040-0610-000-003141	-4.39
	0100102434	03/20/24	17ML-4M66-NXYT	240323		4-27-971-23-3330-0610-000-008600	-8.16
	0100102434	03/20/24	13J4-HJQX-FNX6	240298	CART #30 64 ITEMS	4-22-301-02-0030-0610-000-005371	-5.77
	0100102434	03/20/24	16XG-NYK4-767J	240583	4 WHEELERS TIRES	4-10-710-26-2600-0730-000-000000	152.43
	0100102434	03/20/24	137T-J4R9-3G1N	240554	SHEET PROTECTORS	4-10-201-10-0020-0610-000-000000	97.21
	0100102434	03/20/24	137T-J4R9-3G1N	240554	PACON 1011207 DECORAL FLAME RETARDANT RO	4-10-301-10-0030-0610-000-000000	97.21

Check Date 03/01/24 - 03/31/24

Vendor Detail Report

FMVEN10A

Vendor	Check Key	Check Date	Invoice No	Po No	Description	Account No	Amount
AMAZON.COM		4304					
	0100102434	03/20/24	1XRM-KJD7-G4X1	240589	ADMIN AND CLASSROOM SUPPLIES	4-19-971-00-0040-0610-000-003141	75.91
	0100102434	03/20/24	1XRM-KJD7-G4X1	240589		4-27-971-24-3330-0610-000-008600	140.99
	0100102434	03/20/24	1KRV-QLT1-KTHV		FY23 PO230709 CREDIT MEMO	4-10-600-00-0000-1990-000-000000	-10.60
	0100102434	03/20/24	1MJ9-NTT4-FHKG	240295	CART # 26 252 ITEMS	4-22-301-02-0030-0610-000-005371	-.83
	0100102434	03/20/24	1Y9K-J1N7-9NNH	240249	AMAZON CART # 8 119 ITEMS	4-22-301-02-0030-0610-000-005371	-14.99
					Check Total		4,440.35
	0100102459	03/29/24	13N1-PFT9-1T3C	240587	PROJECT DREAM SUPPLIES	4-10-602-00-0090-0610-000-001210	207.67
	0100102459	03/29/24	11JW-7MH7-7Q1C	240591	PJD PROGRAM SUPPLIES	4-10-602-00-0090-0610-000-001210	16.49
	0100102459	03/29/24	1YVK-1WGF-W4PN	240587	PROJECT DREAM SUPPLIES	4-10-602-00-0090-0610-000-001210	245.08
	0100102459	03/29/24	1JL1-G3PV-9WY7	240591	PJD PROGRAM SUPPLIES	4-10-602-00-0090-0610-000-001210	122.62
	0100102459	03/29/24	147Q-JHMR-9JV1	240515	EHS SUPPLIES	4-27-971-01-3330-0610-000-008600	376.94
					Check Total		968.80
					Vendor Total		7,025.07
AMERICAN FIDELITY ASSURANCE		3685					
	0100102452	03/26/24	26-MAR-24		PAYROLL LIABILITIES	4-22-000-00-0000-7421-000-000000	528.56
	0100102452	03/26/24	26-MAR-24		PAYROLL LIABILITIES	4-26-000-00-0000-7421-000-000000	130.22
	0100102452	03/26/24	26-MAR-24		PAYROLL LIABILITIES	4-27-000-00-0000-7421-000-000000	264.96
	0100102452	03/26/24	26-MAR-24		PAYROLL LIABILITIES	4-21-000-00-0000-7421-000-000000	407.36
	0100102452	03/26/24	26-MAR-24		PAYROLL LIABILITIES	4-10-000-00-0000-7421-000-000000	561.78
	0100102452	03/26/24	26-MAR-24		PAYROLL LIABILITIES	4-22-000-00-0000-7421-000-000000	99.40
	0100102452	03/26/24	26-MAR-24		PAYROLL LIABILITIES	4-10-000-00-0000-7421-000-000000	4,740.43
	0100102452	03/26/24	26-MAR-24		PAYROLL LIABILITIES	4-21-000-00-0000-7421-000-000000	31.80
					Check Total		6,764.51
					Vendor Total		6,764.51
ANDREA KOEHLER		36609					
	0100102460	03/29/24	03-21-2024_6		REIMB INTERNSHIP PROGRAM SUPPLY	4-22-602-10-0090-0610-000-004429	80.24
					Check Total		80.24
					Vendor Total		80.24
ANTHEM LIFE INSURANCE CO.		398					
	0100102453	03/26/24	26-MAR-24		PAYROLL LIABILITIES	4-22-000-00-0000-7421-000-000000	15.22
	0100102453	03/26/24	26-MAR-24		PAYROLL LIABILITIES	4-10-000-00-0000-7421-000-000000	127.56
					Check Total		142.78
					Vendor Total		142.78

Vendor	Check Key	Check Date	Invoice No	Po No	Description	Account No	Amount
ASAP SNOW PLOWING		41483					
	0100102421	03/13/24	03-08-2024_14		2/9-2/28 SNOW REMOVAL	4-10-710-26-2600-0300-000-000000	2,618.75
						Check Total	2,618.75
						Vendor Total	2,618.75
BC INTERIORS, LLC		37460					
	0100102461	03/29/24	73093	240455	FURNITURE FOR EHS CONNECTOR ROOM PROPOS	4-27-971-01-3330-0610-000-008600	7,256.10
						Check Total	7,256.10
						Vendor Total	7,256.10
BERTHOUD HIGH SCHOOL		41777					
	0100102462	03/29/24	03-21-2024_15		3/29 HS TRACK ENTRY FEE	4-10-301-14-1800-0584-000-000000	250.00
						Check Total	250.00
						Vendor Total	250.00
BIGHORN HARDWARE		93					
	0100102378	03/07/24	03-01-2024_46		2/CHARGES ACCT 30030	4-10-710-26-2600-0430-000-000000	241.23
						Check Total	241.23
						Vendor Total	241.23
BSN SPORTS		3784					
	0100102379	03/07/24	923073105		ATHELTIC SUPPLY	4-10-301-14-1850-0610-000-000000	80.35
						Check Total	80.35
						Vendor Total	80.35
BULK BOOKSTORE		36951					
	0100102380	03/07/24	159390	240501	QUOTE# BB58963 - SUMMER PACK SUPPLIES	4-19-971-00-0040-0610-000-003141	118.07
	0100102380	03/07/24	159390	240501		4-27-971-23-3330-0610-000-008600	219.28
						Check Total	337.35
						Vendor Total	337.35
CAPLAN & EARNEST, LLC.		3779					
	0100102381	03/07/24	207952		1/CHARGES ID 11842-06	4-10-602-10-0090-0300-000-000000	1,404.00
						Check Total	1,404.00
						Vendor Total	1,404.00

Vendor Detail Report

Vendor	Check Key	Check Date	Invoice No	Po No	Description	Account No	Amount
CDHS		7457					
	0100102463	03/29/24	C-10474		COMMODITY DELIVERY FEE	4-21-740-31-3100-0633-000-000000	609.00
	0100102463	03/29/24	C-11013		COMMODITY DELIVERY FEE	4-21-740-31-3100-0633-000-000000	435.00
	0100102463	03/29/24	C-11014		COMMODITY DELIVERY FEE	4-21-740-31-3100-0633-000-000000	79.75
					Check Total		1,123.75
					Vendor Total		1,123.75
CDW GOVERNMENT, INC.		1564					
	0100102382	03/07/24	ZR00455901	240538	ESTIMATE #0036221 - GOOGLE WORKSPACE FOR	4-10-602-20-2290-0612-000-000000	480.00
					Check Total		480.00
					Vendor Total		480.00
CENTURYLINK		2139					
	0100102435	03/20/24	03-19-2024_11		3/CHARGES 719-486-8066 706B	4-10-602-10-0090-0531-000-000000	190.96
	0100102435	03/20/24	03-19-2024_15		3/CHARGES ACCT 333591424	4-10-602-10-0090-0531-000-000000	73.24
	0100102435	03/20/24	03-19-2024_14		3/CHARGES ACCT 334086972	4-10-602-10-0090-0531-000-000000	243.56
	0100102435	03/20/24	03-19-2024_13		3/CHARGES ACCT 333927546	4-10-602-10-0090-0531-000-000000	77.43
					Check Total		585.19
	0100102464	03/29/24	03-21-2024_5		3/CHARGES ACCT K-719-111-6280001M	4-10-602-10-0090-0531-000-000000	976.45
					Check Total		976.45
					Vendor Total		1,561.64
CHAMPION TEAMWEAR		41602					
	0100102465	03/29/24	101632192	240550	SE00332463 VALID 30 DAYS FROM 2/13/2024	4-10-201-14-1890-0610-000-000000	2,849.29
					Check Total		2,849.29
					Vendor Total		2,849.29
CHRISTY MARCELLA TRUJILLO		2643					
	0100102466	03/29/24	03-21-2024_14		REIMB TRAVEL EXP 2/14 CFI BOCES	4-10-602-20-2213-0350-000-000000	45.75
					Check Total		45.75
					Vendor Total		45.75
CINDY MACISAAC		687					
	0100102467	03/29/24	03-21-2024_24		REIMBURSE SPED SUPPLIES	4-10-602-12-1700-0610-000-003130	69.53
					Check Total		69.53
					Vendor Total		69.53

Vendor Detail Report

Vendor	Check Key	Check Date	Invoice No	Po No	Description	Account No	Amount
CINDY RITACCO		39802					
	0100102383	03/07/24	03-01-2024_50		REIMBURSE SUPPLIES	4-10-100-10-0010-0610-000-000000	26.03
					Check Total		26.03
					Vendor Total		26.03
COLLEGE COUNSELING SERVICE		41351					
	0100102384	03/07/24	2024-157	240441	NEEDS ASSESSMENT ENVIRONMENTAL SCAN	4-22-602-00-2100-0300-000-003192	3,750.00
					Check Total		3,750.00
					Vendor Total		3,750.00
COLO. DEPT. OF REVENUE		100					
	0100639516	03/26/24	03-26-2024_2		3/SIT	4-10-000-00-0000-7471-000-000000	26,144.00
					Check Total		26,144.00
	0100639520	03/29/24	03-29-2024_1		SEPT SIT PAYROLL CORR	4-10-000-00-0000-7471-000-000000	3.00
					Check Total		3.00
					Vendor Total		26,147.00
COLORADO DEPARTMENT OF REVENUE		39012					
	0100102454	03/26/24	26-MAR-24		PAYROLL LIABILITIES	4-10-000-00-0000-7421-000-000000	963.10
	0100102454	03/26/24	26-MAR-24		PAYROLL LIABILITIES	4-22-000-00-0000-7421-000-000000	353.92
					Check Total		1,317.02
					Vendor Total		1,317.02
COLORADO FBLA		1604					
	0100102436	03/20/24	REG 61199	240592	SEE 24 PAGE INVOICE	4-10-301-14-1800-0580-000-000000	10,860.00
	0100102436	03/20/24	REG 61199	240592	STUDENT REGISTRATION PAGES 1-19	4-22-602-00-0090-0580-000-004048	2,190.00
					Check Total		13,050.00
					Vendor Total		13,050.00
COLORADO SPORTS OFFICIALS		24562					
	0100102437	03/20/24	2023-24		MS GIRLS BASKETBALL OFFICIALS FEES FY24	4-10-201-14-1815-0391-000-000000	1,549.00
					Check Total		1,549.00
					Vendor Total		1,549.00

Vendor Detail Report

Vendor	Check Key	Check Date	Invoice No	Po No	Description	Account No	Amount
COMMUNITY BANKS OF COLORADO		110					
	0100639515	03/26/24	03-26-2024_1		3/PAYROLL	4-10-000-00-0000-8102-000-000000	605,000.00
						Check Total	605,000.00
						Vendor Total	605,000.00
COOKE AUTOMOTIVE & EQUIPMENT REPAIR: 39888							
	0100102385	03/07/24	1447	240510	ESTIMATE #1243 MLC	4-22-602-00-2100-0300-000-009414	1,542.37
						Check Total	1,542.37
						Vendor Total	1,542.37
CORPORATE TRANSLATION SERVICES, INC 32441							
	0100102386	03/07/24	257100		11/PHONE TRANSLATION	4-10-602-10-0090-0300-000-000000	124.20
	0100102386	03/07/24	259509		12/PHONE TRANSLATION	4-10-602-10-0090-0300-000-000000	84.98
	0100102386	03/07/24	264453		2/PHONE TRANSLATION	4-10-602-10-0090-0300-000-000000	46.70
	0100102386	03/07/24	261944		1/PHONE TRANSLATION	4-10-602-10-0090-0300-000-000000	101.30
						Check Total	357.18
						Vendor Total	357.18
DAWN SMELTZER		24708					
	0100102468	03/29/24	03-21-2024_17		REIMB PJD TRANSPORTATION SUPPLIES	4-22-602-00-2100-0610-000-009414	42.74
						Check Total	42.74
						Vendor Total	42.74
DIEGO GONZALEZ		38512					
	0100102469	03/29/24	03-21-2024_3		2/20 INTERPRETATION	4-10-602-10-0090-0300-000-000000	96.25
						Check Total	96.25
						Vendor Total	96.25
DURAN & LUCERO, INC.		1149					
	0100102470	03/29/24	290053		PLOW REPAIR	4-10-710-26-2600-0300-000-000000	410.00
						Check Total	410.00
						Vendor Total	410.00
DYNAMIC PROGRAM MANAGEMENT LLC		39390					
	0100102471	03/29/24	1780		2/MASTER PLAN FEES	4-10-602-10-0090-0300-000-000000	942.50
	0100102471	03/29/24	1752		1/MASTER PLAN FEES	4-10-602-10-0090-0300-000-000000	5,685.00
						Check Total	6,627.50
						Vendor Total	6,627.50

Vendor	Check Key	Check Date	Invoice No	Po No	Description	Account No	Amount
EMS LINQ, INC		38300					
	0100102472	03/29/24	C-123852		W2 AND 1099 FORMS	4-10-601-25-2510-0550-000-000000	304.70
					Check Total		304.70
					Vendor Total		304.70
FAITH PONGREKUN		40991					
	0100102438	03/20/24	03-19-2024_6		PJD CLUB LEADER SERVICES	4-22-301-00-0030-0300-000-004449	354.90
					Check Total		354.90
					Vendor Total		354.90
FINDING HOPE COUNSELING AND CONSULT		38350					
	0100102439	03/20/24	23-040		STAFF MENTOR - K MENCHEN	4-22-602-00-2100-0300-000-004414	260.00
					Check Total		260.00
					Vendor Total		260.00
FLEX ACCOUNT ADMINISTRATION AMERICA		3686					
	0100102455	03/26/24	26-MAR-24		PAYROLL LIABILITIES	4-22-000-00-0000-7421-000-000000	280.02
	0100102455	03/26/24	26-MAR-24		PAYROLL LIABILITIES	4-10-000-00-0000-7421-000-000000	2,783.11
	0100102455	03/26/24	26-MAR-24		PAYROLL LIABILITIES	4-21-000-00-0000-7421-000-000000	41.67
					Check Total		3,104.80
					Vendor Total		3,104.80
GEAR WEST SKI AND RUN		7714					
	0100102387	03/07/24	PO#240568	240568	SWIX T60-110 WAX MACHINE 110V	4-10-301-14-1885-0610-000-000000	254.99
					Check Total		254.99
					Vendor Total		254.99
GRAINGER		3709					
	0100102422	03/13/24	9035558916		ROOF MAINT REPAIR	4-10-710-26-2600-0430-000-000000	127.51
					Check Total		127.51
	0100102440	03/20/24	9043171165		LCES FIRE SYSTEM REPAIR	4-10-710-26-2600-0430-000-000000	99.64
					Check Total		99.64
					Vendor Total		227.15
GREAT KIDS, INC		37613					
	0100102388	03/07/24	19563	240503	GGK NEXT GENERATION PRENATAL TO 36 MONTH	4-27-971-01-3330-0320-000-008600	7,363.00
					Check Total		7,363.00
					Vendor Total		7,363.00

Vendor Detail Report

Vendor	Check Key	Check Date	Invoice No	Po No	Description	Account No	Amount
GRIZ 2 AUTO PARTS		10871					
	0100102423	03/13/24	03-08-2024_4		2/CHARGES ACCT 6802	4-10-720-27-2700-0431-000-000000	950.90
						Check Total	950.90
						Vendor Total	950.90
HELLO FERN CREATIONS		36706					
	0100102441	03/20/24	03-19-2024_18		BOARD SUPPLIES	4-10-601-23-2310-0610-000-000000	200.00
						Check Total	200.00
						Vendor Total	200.00
HERALD DEMOCRAT		60					
	0100102389	03/07/24	03-01-2024_48		2/CHARGES ADDT CH ACCT 38171 VACANCY	4-10-601-23-2391-0540-000-000000	55.00
	0100102389	03/07/24	03-01-2024_48		2/CHARGES ADDT CH ACCT 38171 BOARD AD	4-10-601-23-2310-0610-000-000000	480.00
						Check Total	535.00
	0100102473	03/29/24	03-21-2024_13		3/CHARGES VACANCY ADS ACCT 38171	4-10-601-23-2391-0540-000-000000	350.00
						Check Total	350.00
						Vendor Total	885.00
HIGH COUNTRY PERSONALIZATIONS		39861					
	0100102474	03/29/24	03-21-2024_26		STAFF SHIRTS	4-10-602-20-2213-0610-000-000000	497.00
						Check Total	497.00
						Vendor Total	497.00
HORACE MANN LIFE INSURANCE CO.		211					
	0100102456	03/26/24	26-MAR-24		PAYROLL LIABILITIES	4-10-000-00-0000-7421-000-000000	265.08
						Check Total	265.08
						Vendor Total	265.08
INTERNAL REVENUE SERVICE		838					
	0100639517	03/26/24	03-26-2024_3		3/FIT	4-10-000-00-0000-7428-000-000000	22,664.38
	0100639517	03/26/24	03-26-2024_3		3/FIT	4-10-000-00-0000-7472-000-000000	44,322.11
						Check Total	66,986.49
						Vendor Total	66,986.49

Vendor	Check Key	Check Date	Invoice No	Po No	Description	Account No	Amount
JAMES MEDINA		23930					
	0100102433	03/19/24	03-19-2024_1		ADVANCE	4-10-000-00-0000-8153-000-000000	700.00
					Check Total		700.00
					Vendor Total		700.00
JAMIE PETERS		781					
	0100102475	03/29/24	03-21-2024_27		REIMB MEAL EXP 3/10-3/12 KNOWLEDGE BOWL	4-10-301-14-1800-0580-000-000000	447.06
					Check Total		447.06
					Vendor Total		447.06
JAN RODGERS MEDIATION LLC		39233					
	0100102390	03/07/24	03-01-2024_18		1/19 & 2/9 RESTORIATIVE JUSTICE	4-22-602-00-2100-0300-000-004414	1,215.21
	0100102390	03/07/24	03-01-2024_18		1/19 & 2/9 RESTORIATIVE JUSTICE	4-10-602-10-0090-0300-000-000000	6,384.79
	0100102390	03/07/24	03-01-2024_18		1/19 & 2/9 RESTORIATIVE JUSTICE TRAVEL	4-10-602-10-0090-0300-000-000000	1,200.07
					Check Total		8,800.07
					Vendor Total		8,800.07
JAYRO ALANIZ BURCIAGA		41548					
	0100102442	03/20/24	03-19-2024_19		FEB-MAR DUB LEADER SERVICES	4-22-301-00-0030-0300-000-004449	580.13
					Check Total		580.13
					Vendor Total		580.13
JENI WINDORSKI		41378					
	0100102476	03/29/24	03-21-2024_8		REFUND STUDENT ATHLETIC FEE	4-10-600-00-0000-1740-000-000000	50.00
					Check Total		50.00
					Vendor Total		50.00
JUSTINE MILLINGTON		39780					
	0100102424	03/13/24	03-08-2024_12		FOOD REIM	4-10-720-27-2700-0690-000-000000	12.38
					Check Total		12.38
					Vendor Total		12.38

Vendor Detail Report

Vendor	Check Key	Check Date	Invoice No	Po No	Description	Account No	Amount
KELLY HORNING		27030					
	0100102477	03/29/24	03-21-2024_2		REIMB TRAVEL EXP 2/29 CDE EC SPRING CONF	4-19-971-00-0040-0580-000-003141	74.00
	0100102477	03/29/24	03-21-2024_2		REIMB TRAVEL EXP 2/29 CDE EC SPRING CONF	4-27-971-24-3330-0580-000-008600	74.00
						Check Total	148.00
						Vendor Total	148.00
KONICA MINOLTA		2292					
	0100102443	03/20/24	44328575		2/DISTRICT COPIERS	4-27-971-24-3330-0330-000-008600	623.94
	0100102443	03/20/24	44328575		2/DISTRICT COPIERS	4-27-971-02-3330-0330-000-008600	103.98
	0100102443	03/20/24	44328575		2/DISTRICT COPIERS	4-26-971-33-3330-0330-000-000000	311.96
	0100102443	03/20/24	44328575		2/DISTRICT COPIERS	4-10-602-10-0090-0330-000-000000	8,610.93
						Check Total	9,650.81
						Vendor Total	9,650.81
KONICA MINOLTA BUSINESS SOL.		4289					
	0100102478	03/29/24	9009847592		3/CANON COPIER MAINT AGREE ACCT 1456125	4-10-602-10-0090-0330-000-000000	224.25
						Check Total	224.25
						Vendor Total	224.25
LAKE COUNTY HUMAN SERVICES		31291					
	0100102391	03/07/24	19 FEB24		MCKINNEY VENTO SERVICES	4-22-602-00-2100-0300-000-005196	7,378.75
						Check Total	7,378.75
						Vendor Total	7,378.75
LAKE COUNTY LANDFILL		370					
	0100102444	03/20/24	03-19-2024_2		2/DISPOSAL SERVICES ACCT L0029	4-10-710-26-2600-0421-000-000000	23.00
						Check Total	23.00
						Vendor Total	23.00
LAKE COUNTY SHERIFF'S OFFICE		34347					
	0100102479	03/29/24	3380		SERVING TRUANCY NOTICE AND MILEAGE	4-10-302-24-2410-0610-000-000000	42.50
						Check Total	42.50
						Vendor Total	42.50

Vendor	Check Key	Check Date	Invoice No	Po No	Description	Account No	Amount
LCEA		20214					
	0100102457	03/26/24	26-MAR-24		PAYROLL LIABILITIES	4-27-000-00-0000-7421-000-000000	300.59
	0100102457	03/26/24	26-MAR-24		PAYROLL LIABILITIES	4-10-000-00-0000-7421-000-000000	3,529.12
	0100102457	03/26/24	26-MAR-24		PAYROLL LIABILITIES	4-22-000-00-0000-7421-000-000000	379.27
	0100102457	03/26/24	26-MAR-24		PAYROLL LIABILITIES	4-26-000-00-0000-7421-000-000000	154.95
	0100102457	03/26/24	26-MAR-24		PAYROLL LIABILITIES	4-21-000-00-0000-7421-000-000000	.93
					Check Total		<u>4,364.86</u>
					Vendor Total		<u>4,364.86</u>
LEADVILLE SANITATION DISTRICT		259					
	0100102392	03/07/24	03-01-2024_21		1 & 2 / SEWER & SANITATION LCHS	4-10-710-26-2600-0411-000-000000	2,308.68
	0100102392	03/07/24	03-01-2024_28		1 & 2 / SEWER & SANITATION WP	4-27-971-24-3330-0620-000-008600	145.53
	0100102392	03/07/24	03-01-2024_28		1 & 2 / SEWER & SANITATION WP	4-26-971-33-3310-0810-000-000000	166.32
	0100102392	03/07/24	03-01-2024_22		1 & 2 / SEWER & SANITATION LCIS	4-10-710-26-2600-0411-000-000000	1,583.02
	0100102392	03/07/24	03-01-2024_23		1 & 2 / SEWER & SANITATION LCIS	4-10-710-26-2600-0411-000-000000	521.74
	0100102392	03/07/24	03-01-2024_24		1 & 2 / SEWER & SANITATION PITTS	4-10-710-26-2600-0411-000-000000	724.58
	0100102392	03/07/24	03-01-2024_25		1 & 2 / SEWER & SANITATION PITTS	4-10-710-26-2600-0411-000-000000	1,146.42
	0100102392	03/07/24	03-01-2024_26		1 & 2 / SEWER & SANITATION BUS	4-10-710-26-2600-0411-000-000000	324.72
	0100102392	03/07/24	03-01-2024_27		1 & 2 / SEWER & SANITATION ADMIN	4-10-710-26-2600-0411-000-000000	212.86
	0100102392	03/07/24	03-01-2024_28		1 & 2 / SEWER & SANITATION WP	4-10-710-26-2600-0411-000-000000	1,351.35
	0100102392	03/07/24	03-01-2024_28		1 & 2 / SEWER & SANITATION WP	4-27-971-24-3330-0620-000-008600	415.80
					Check Total		<u>8,901.02</u>
					Vendor Total		<u>8,901.02</u>
LIONS CLUB		3360					
	0100102393	03/07/24	03-01-2024_49		FOOD CARD FOR LCES COOKING CLUB	4-10-602-00-0090-0610-000-001210	100.00
					Check Total		<u>100.00</u>
					Vendor Total		<u>100.00</u>
LISA TEDESKO		41726					
	0100102480	03/29/24	1	240573	2/23 SUMMIT PRESENTER FOR RURAL CO-ACTIO	4-22-602-10-2100-0300-000-004429	1,000.00
					Check Total		<u>1,000.00</u>
					Vendor Total		<u>1,000.00</u>

Check Date 03/01/24 - 03/31/24

Vendor Detail Report

FMVEN10A

Vendor	Check Key	Check Date	Invoice No	Po No	Description	Account No	Amount
LYONS GADDIS, P.C.		39039					
	0100102394	03/07/24	7-FEB 2024		DEC-FEB/CHARGES-ACCT 19221.0000	4-10-602-10-0090-0300-000-000000	5,932.40
						Check Total	5,932.40
						Vendor Total	5,932.40
MARIA ANTONIETA LIZARDO		17922					
	0100102445	03/20/24	03-19-2024_1		2/1-3/10 TRAVEL REIMBURSEMENT	4-21-740-31-3100-0580-000-000000	85.47
						Check Total	85.47
						Vendor Total	85.47
MBA RESEARCH AND CURRICULUM CENTER		38865					
	0100102395	03/07/24	82724	240579	HSB TRANING HSB PRINCIPALS OF MARKETING	4-22-602-00-0090-0300-000-004048	1,500.00
	0100102395	03/07/24	82933	240579	HSB TRANING HSB PRINCIPALS OF MARKETING	4-22-602-00-0090-0300-000-004048	88.00
						Check Total	1,588.00
						Vendor Total	1,588.00
MCCANDLESS INT'L TRUCKS, INC.		1152					
	0100102396	03/07/24	S101052829:02		REPAIR BUS 22 ALIGN	4-10-720-27-2700-0430-000-000000	220.00
	0100102396	03/07/24	P101578301:01		REPAIR BUS 17 DOOR FRAME	4-10-720-27-2700-0430-000-000000	966.11
	0100102396	03/07/24	S1010599929:01		REPAIR BUS 20	4-10-720-27-2700-0430-000-000000	1,760.12
	0100102396	03/07/24	P101555999:01		REPAIR BUS 22	4-10-720-27-2700-0430-000-000000	1,229.85
	0100102396	03/07/24	S101052401:01		REPAIR BUS 20 JUMP START UNIT	4-10-720-27-2700-0430-000-000000	253.00
						Check Total	4,429.08
						Vendor Total	4,429.08
MCCANDLESS INTERNATIONAL TRUCK		1735					
	0100102397	03/07/24	S101058671	240386	ESTIMATE # 4148321 REPAIRS ON BUS 21	4-10-720-27-2700-0430-000-000000	9,484.45
	0100102397	03/07/24	S101059316:01	240459	ADD CHAINS TO ACTIVITY BUS #2-EST#419637	4-22-602-00-0090-0610-000-001201	6,351.94
	0100102397	03/07/24	S101058674	240377	ESTIMATE # 4147483 REPAIR BUS 3	4-10-720-27-2700-0430-000-000000	12,872.12
						Check Total	28,708.51
	0100102425	03/13/24	P101580825:01		BUS REPAIR	4-10-720-27-2700-0431-000-000000	1,455.93
						Check Total	1,455.93
						Vendor Total	30,164.44

Vendor	Check Key	Check Date	Invoice No	Po No	Description	Account No	Amount
MCI		2960					
	0100102398	03/07/24	03-01-2024_20		2/LONG DISTANCE FAX ACCT 08660958314	4-10-602-10-0090-0531-000-000000	88.78
						Check Total	<u>88.78</u>
	0100102481	03/29/24	03-21-2024_9		3/HDST FAX ACCT 6P603161	4-27-971-24-3330-0531-000-008600	37.55
						Check Total	<u>37.55</u>
						Vendor Total	<u>126.33</u>
MEADOW GOLD DAIRIES		1343					
	0100102426	03/13/24	03-08-2024_1		2/MEADOWGOLD MILK	4-21-740-31-3100-0631-000-006555	2,874.99
						Check Total	<u>2,874.99</u>
						Vendor Total	<u>2,874.99</u>
MICHELE DEWINE		24058					
	0100102399	03/07/24	03-01-2024_54		REIMBURSE JR HI SCI AND PBIS SUPPLY	4-10-201-10-1310-0610-000-000000	74.19
						Check Total	<u>74.19</u>
						Vendor Total	<u>74.19</u>
MILLENNIUM TOWING		1273					
	0100102400	03/07/24	014004		TOWING FEE	4-10-720-27-2700-0300-000-000000	250.00
						Check Total	<u>250.00</u>
						Vendor Total	<u>250.00</u>
MONTE VISTA MIDDLE SCHOOL		1198					
	0100102482	03/29/24	03-21-2024_7		4/20 MS TRACK MEET ENTRY FEE	4-10-201-14-1800-0584-000-000000	150.00
						Check Total	<u>150.00</u>
						Vendor Total	<u>150.00</u>
MOUNTAIN BRD. OF COOP. SERV.		302					
	0100102483	03/29/24	FY24-027		1&2/BOCES IEP TRANSLATIONS	4-10-602-10-0090-0591-000-000000	1,533.52
						Check Total	<u>1,533.52</u>
						Vendor Total	<u>1,533.52</u>
N.SUSAN HAMMERTON		38180					
	0100102446	03/20/24	03-19-2024_10		2/21 2/27 3/5 INTERPRETATION	4-10-602-10-0090-0300-000-000000	148.75
						Check Total	<u>148.75</u>
						Vendor Total	<u>148.75</u>

Check Date 03/01/24 - 03/31/24

Vendor Detail Report

FMVEN10A

Vendor	Check Key	Check Date	Invoice No	Po No	Description	Account No	Amount
NICOLE VIGIL		37907					
	0100102484	03/29/24	03-21-2024_10		REFUND STUDENT ATHLETIC FEE	4-10-600-00-0000-1740-000-000000	50.00
					Check Total		50.00
					Vendor Total		50.00
O'REILLY AUTOMOTIVE, INC		27090					
	0100102427	03/13/24	03-08-2024_5		2/CHARGES ACCT 1754362	4-10-710-26-2600-0430-000-000000	70.96
	0100102427	03/13/24	03-08-2024_5		2/CHARGES ACCT 1754362	4-10-720-27-2700-0430-000-000000	16.47
	0100102427	03/13/24	03-08-2024_5		2/CHARGES ACCT 1754362	4-10-720-27-2700-0431-000-000000	139.83
					Check Total		227.26
					Vendor Total		227.26
ORIENTAL TRADING		12246					
	0100102401	03/07/24	73000496801	240565	FARM STICKER SCENES	4-26-971-33-3310-0610-000-000000	57.13
					Check Total		57.13
					Vendor Total		57.13
PARKVILLE WATER DISTRICT		334					
	0100102485	03/29/24	03-21-2024_28		3/WATER ACCT 1265 ADMIN	4-10-710-26-2600-0411-000-000000	60.00
	0100102485	03/29/24	03-21-2024_29		3/WATER ACCT 1264 BUS	4-10-710-26-2600-0411-000-000000	60.00
	0100102485	03/29/24	03-21-2024_30		3/WATER ACCT 1219 FB FIELD	4-10-710-26-2600-0411-000-000000	75.10
	0100102485	03/29/24	03-21-2024_31		3/WATER ACCT 1218 PRACTICE	4-10-710-26-2600-0411-000-000000	75.10
	0100102485	03/29/24	03-21-2024_32		3/WATER ACCT 1217 LCHS	4-10-710-26-2600-0411-000-000000	243.22
	0100102485	03/29/24	03-21-2024_35		3/WATER ACCT 1151 LCES	4-26-971-33-3310-0810-000-000000	27.89
	0100102485	03/29/24	03-21-2024_34		3/WATER ACCT 1206 PITTS	4-10-710-26-2600-0411-000-000000	115.06
	0100102485	03/29/24	03-21-2024_35		3/WATER ACCT 1151 LCES	4-10-710-26-2600-0411-000-000000	226.60
	0100102485	03/29/24	03-21-2024_35		3/WATER ACCT 1151 LCES	4-27-971-24-3330-0620-000-008600	69.72
	0100102485	03/29/24	03-21-2024_35		3/WATER ACCT 1151 LCES	4-27-971-02-3330-0620-000-008600	24.42
	0100102485	03/29/24	03-21-2024_33		3/WATER ACCT 1216 LCIS	4-10-710-26-2600-0411-000-000000	483.68
					Check Total		1,460.79
					Vendor Total		1,460.79
PAUL H. BROOKS CO, INC.		37729					
	0100102402	03/07/24	1282567		ASQ ASSESSMENT SUBSCRIPTION	4-19-971-00-0040-0610-000-003141	124.98
	0100102402	03/07/24	1282567		ASQ ASSESSMENT SUBSCRIPTION	4-26-971-33-3310-0610-000-000000	124.97
	0100102402	03/07/24	1282567		ASQ ASSESSMENT SUBSCRIPTION	4-27-971-24-3330-0610-000-008600	249.95
					Check Total		499.90
					Vendor Total		499.90

Vendor	Check Key	Check Date	Invoice No	Po No	Description	Account No	Amount
PERA		340					
	0100639514	03/07/24	03-07-2024_1		PERA RETIREE-PAMELA DECKER 41351	4-22-602-00-2100-0300-000-003192	162.54
						Check Total	162.54
	0100639519	03/26/24	03-26-2024_5		3/PERA	4-10-000-00-0000-7473-000-000000	256,362.17
						Check Total	256,362.17
						Vendor Total	256,524.71
PHEBE NICOLE CONDON		34649					
	0100102403	03/07/24	03-01-2024_55		REIMBURSE SCIENCE SUPPLIES	4-10-301-10-1310-0610-000-000000	126.93
						Check Total	126.93
						Vendor Total	126.93
PHONEWARE		40070					
	0100102404	03/07/24	IN-8000083292062		3/ LOCAL & LONG DIST CARRIER ACCT 30271	4-10-602-10-0090-0531-000-000000	708.79
	0100102404	03/07/24	IN-8000832919945		2/LOCAL & LONG DISTANCE CARRIER	4-10-602-10-0090-0531-000-000000	708.79
						Check Total	1,417.58
						Vendor Total	1,417.58
PINNACOL ASSURANCE		454					
	0100102486	03/29/24	21621019		9TH OF 9 WORKERS COMP PREMIUM INSTAL	4-10-602-28-2850-0521-000-000000	11,379.00
						Check Total	11,379.00
						Vendor Total	11,379.00
PROCARE THERAPY		41041					
	0100102405	03/07/24	20902972		W/E 3/1-SCHOOL TELE-SLP	4-10-602-12-1700-0300-000-003130	3,675.00
						Check Total	3,675.00
	0100102447	03/20/24	20896158		W.E 2/23 / SCHOOL TELE-SLP	4-10-602-12-1700-0300-000-003130	3,675.00
						Check Total	3,675.00
						Vendor Total	7,350.00
PYE-BARKER FIRE & SAFETY, LLC		37060					
	0100102406	03/07/24	PSI1329642		KITCHEN HOOD INSPECT/RECERT	4-10-710-26-2600-0300-000-000000	485.00
	0100102406	03/07/24	PSI1239680		KITCHEN HOOD INSPECT/RECERT	4-10-710-26-2600-0300-000-000000	635.00
	0100102406	03/07/24	PSI1239713		KITCHEN HOOD INSPECT/RECERT	4-10-710-26-2600-0300-000-000000	760.00
						Check Total	1,880.00
						Vendor Total	1,880.00

Vendor Detail Report

Vendor	Check Key	Check Date	Invoice No	Po No	Description	Account No	Amount
QUILL CORPORATION		539					
	0100102407	03/07/24	36575726		CTE COURSE SUPPLIES	4-10-301-10-1600-0610-000-003120	83.95
	0100102407	03/07/24	36541539		CTE COURSE SUPPLIES	4-10-301-10-1600-0610-000-003120	60.83
	0100102407	03/07/24	36754864		CTE SUPPLIES	4-10-301-10-1600-0610-000-003120	144.12
	0100102407	03/07/24	36768317		CTE SUPPLIES	4-10-301-10-1600-0610-000-003120	15.76
	0100102407	03/07/24	36758768		CTE SUPPLIES	4-10-301-10-1600-0610-000-003120	18.83
	0100102407	03/07/24	36545735		CTE COURSE SUPPLIES	4-10-301-10-1600-0610-000-003120	41.64
					Check Total		365.13
					Vendor Total		365.13
REIGLES MECHANICAL LLC		41742					
	0100102408	03/07/24	1	240586	LCES SNOWMELT REPAIR	4-10-710-26-2600-0300-000-000000	8,555.00
					Check Total		8,555.00
					Vendor Total		8,555.00
ROCKY MTN. FAMILY PRACTICE		3520					
	0100102409	03/07/24	FEBRUARY 2024		DRUG TEST	4-10-720-27-2700-0300-000-000000	135.00
	0100102409	03/07/24	MARCH 2024		DRUG TEST	4-10-720-27-2700-0300-000-000000	40.00
					Check Total		175.00
					Vendor Total		175.00
ROMEO MUSIC, LLC		41653					
	0100102410	03/07/24	67322	240562	PLEASE SEE QUOTE 42581 AUDIO HEADPHONES	4-10-101-10-1200-0610-000-000000	439.75
					Check Total		439.75
					Vendor Total		439.75
SALIDA SCHOOL DISTRICT		5177					
	0100102411	03/07/24	03-01-2024_44		JUL-FEB CAREERWISE EXP	4-22-602-10-2100-0580-000-004429	4,414.66
	0100102411	03/07/24	03-01-2024_44		JUL-FEB SUSTAINABILITY COOR PERA	4-22-602-10-2100-0230-335-004429	2,337.21
	0100102411	03/07/24	03-01-2024_44		JUL-FEB RCA SUMMIT SUPPLIES	4-22-602-10-2100-0610-000-004429	1,250.00
	0100102411	03/07/24	03-01-2024_44		JUL-FEB NAVIANCE CORR	4-22-602-10-0090-0300-000-004429	6,436.61
	0100102411	03/07/24	03-01-2024_44		JUL-FEB SUSTAINABILITY COOR SL	4-22-602-10-2100-0110-335-004429	11,666.69
	0100102411	03/07/24	03-01-2024_44		JUL-FEB SUSTAINABILITY COOR MEDICARE	4-22-602-10-2100-0221-335-004429	158.39
					Check Total		26,263.56
					Vendor Total		26,263.56

Check Date 03/01/24 - 03/31/24

Vendor Detail Report

FMVEN10A

Vendor	Check Key	Check Date	Invoice No	Po No	Description	Account No	Amount
SANGRE DE CRISTO ELECTRIC		382					
	0100102412	03/07/24	03-01-2024_47		2/TWIN LAKES SCHOOLHOUSE ACCT 13090000	4-10-710-26-2600-0620-000-000000	45.61
						Check Total	<u>45.61</u>
						Vendor Total	45.61
SARA SUMERLIN		41637					
	0100102413	03/07/24	03-01-2024_12		REIMB TRAVEL EXP 2/8-2/9 SLP CONFERENCE	4-10-602-12-1700-0580-000-003130	624.39
						Check Total	<u>624.39</u>
						Vendor Total	624.39
SCANGA MEAT CO		35572					
	0100102428	03/13/24	1050		2/MEAT PRODUCTS	4-21-740-31-3100-0630-000-000000	725.10
	0100102428	03/13/24	1550		2/MEAT PRODUCTS	4-21-740-31-3100-0630-000-000000	177.98
	0100102428	03/13/24	0802		2/MEAT PRODUCTS	4-21-740-31-3100-0630-000-000000	499.92
						Check Total	<u>1,403.00</u>
						Vendor Total	1,403.00
SILVER CITY PRINTING		413					
	0100102448	03/20/24	261999		DO FORMS AND SUPPLIES	4-10-601-25-2510-0550-000-000000	487.80
	0100102448	03/20/24	261999		DO FORMS AND SUPPLIES	4-10-602-10-0090-0610-000-000000	81.25
	0100102448	03/20/24	261999		DO FORMS AND SUPPLIES	4-10-602-10-0090-0611-000-000000	18.02
						Check Total	<u>587.07</u>
						Vendor Total	587.07
STECK INSIGHTS LLC		36161					
	0100102449	03/20/24	2619		3/MONTHLY WEBSITE SERVICE	4-10-602-10-0090-0300-000-000000	220.00
						Check Total	<u>220.00</u>
						Vendor Total	220.00
STERLING LITERACY CONSULTING		38318					
	0100102487	03/29/24	LC22024		2/TCH ADM SCI RDG L/A PD	4-22-301-02-2100-0302-000-005371	1,575.00
	0100102487	03/29/24	LC22024		2/6TH-12TH CONSULTANT	4-22-301-02-2100-0300-000-005371	11,670.00
	0100102487	03/29/24	LC22024		2/TCH ADM SCI RDG L/A P/D	4-22-301-02-2100-0302-000-005371	6,500.00
	0100102487	03/29/24	LC22024		2/TCH ADM SCI RDG L/A P/D	4-22-100-02-2100-0302-000-005371	675.00
	0100102487	03/29/24	LC22024		2/ BIRTH-5 CONSULTANT	4-22-971-02-2100-0300-000-005371	2,000.00
	0100102487	03/29/24	LC22024		2/KINDER-5 CONSULTANT	4-22-100-02-2100-0300-000-005371	6,930.00
						Check Total	<u>29,350.00</u>
						Vendor Total	29,350.00

Check Date 03/01/24 - 03/31/24

Vendor Detail Report

FMVEN10A

Vendor	Check Key	Check Date	Invoice No	Po No	Description	Account No	Amount
STJERNHOLM CHIROPRACTIC		33243					
	0100102414	03/07/24	3/5/24		DOT PHYSICAL	4-10-720-27-2700-0300-000-000000	85.00
						Check Total	85.00
						Vendor Total	85.00
SUMMIT PAC		30821					
	0100102415	03/07/24	4485	240176	FY24 PSYCHOLOGICAL SERVICES	4-10-602-12-1700-0300-000-003130	6,254.53
	0100102415	03/07/24	4434	240176	FY24 PSYCHOLOGICAL SERVICES	4-10-602-12-1700-0300-000-003130	1,479.50
						Check Total	7,734.03
						Vendor Total	7,734.03
TRISTA ROMOCKI		41327					
	0100102416	03/07/24	03-01-2024_57		REIM TRAVEL EXP 2/26-2/28 EL ACHV CONF	4-22-602-00-2100-0580-000-003276	190.23
						Check Total	190.23
						Vendor Total	190.23
U.S. FOOD SERVICE, INC. ALLIANT		2117					
	0100102417	03/07/24	03-01-2024_37		2/FOOD LCES	4-21-740-31-3100-0630-000-000000	6,253.28
	0100102417	03/07/24	03-01-2024_39		2/FOOD LCHS	4-21-740-31-3100-0630-000-000000	8,831.75
	0100102417	03/07/24	03-01-2024_38		2/FOOD LCIS	4-21-740-31-3100-0630-000-000000	12,945.61
						Check Total	28,030.64
						Vendor Total	28,030.64
VERIZON WIRELESS		3373					
	0100102429	03/13/24	9958368031		2/CHARGES ACCT 970483601- 00001-BUS	4-10-602-10-0090-0531-000-000000	60.74
	0100102429	03/13/24	9958368031		2/CHARGES ACCT 970483601- 00001	4-26-971-33-3310-0810-000-000000	41.98
	0100102429	03/13/24	9958368031		2/CHARGES ACCT 970483601- 00001	4-27-971-02-3330-0531-000-008600	58.76
	0100102429	03/13/24	9958368031		2/CHARGES ACCT 970483601- 00001	4-27-971-24-3330-0531-000-008600	67.15
	0100102429	03/13/24	9958368031		2/CHARGES ACCT 970483601- 00001	4-27-971-02-3330-0531-000-008600	50.74
	0100102429	03/13/24	9958368031		2/CHARGES ACCT 970483601- 00001	4-10-602-10-0090-0531-000-000000	2,565.63
	0100102429	03/13/24	9958368031		2/CHARGES ACCT 970483601- 00001-FAM CONNE	4-22-602-00-2100-0531-000-009414	303.70
						Check Total	3,148.70
						Vendor Total	3,148.70

Vendor	Check Key	Check Date	Invoice No	Po No	Description	Account No	Amount
VERO FIBER NETWORKS, LLC		34517					
	0100102430	03/13/24	5964		2/FORETHOUGHT INTERNET PROVIDER	4-10-602-10-0090-0531-000-000000	250.00
						Check Total	250.00
						Vendor Total	250.00
VOCOVISION		35858					
	0100102418	03/07/24	20895743		W/E 2/25 / SCHOOL TELE-COUNSELOR	4-10-602-12-1700-0300-000-003130	2,677.50
	0100102418	03/07/24	20899826		W/E 3/3 / SCHOOL TELE-COUNSELOR	4-10-602-12-1700-0300-000-003130	3,060.00
						Check Total	5,737.50
	0100102450	03/20/24	20906025		W/E 3/10 / SCHOOL TELE-COUNSELOR	4-10-602-12-1700-0300-000-003130	2,890.00
						Check Total	2,890.00
	0100102488	03/29/24	20920066		W/E 3/24 / SCHOOL TELE-COUNSELOR	4-10-602-12-1700-0300-000-003130	3,187.50
						Check Total	3,187.50
						Vendor Total	11,815.00
WASTE MANAGEMENT OF CO INC		39934					
	0100102419	03/07/24	03-01-2024_31		2/TRASH SERVICE CUST ID 27-15308-13008	4-10-710-26-2600-0421-000-000000	2,340.37
						Check Total	2,340.37
						Vendor Total	2,340.37
WELLNESS SCREENING LLC		1704					
	0100102420	03/07/24	2586		ANNUAL ADMIN FEE FOR DRUG TEST	4-10-720-27-2700-0300-000-000000	150.00
	0100102420	03/07/24	2609		DOT DRUG TEST	4-10-720-27-2700-0300-000-000000	140.54
						Check Total	290.54
						Vendor Total	290.54

Vendor Detail Report

Vendor	Check Key	Check Date	Invoice No	Po No	Description	Account No	Amount
XCEL ENERGY		3732					
	0100102431	03/13/24	866982204		2/UTILITIES LCE ACCT 53-0013027313-0	4-27-971-24-3330-0620-000-008600	903.66
	0100102431	03/13/24	866982204		2/UTILITIES LCE ACCT 53-0013027313-0	4-10-710-26-2600-0620-000-000000	2,936.90
	0100102431	03/13/24	866982204		2/UTILITIES LCE ACCT 53-0013027313-0	4-26-971-33-3310-0810-000-000000	361.48
	0100102431	03/13/24	866982204		2/UTILITIES LCE ACCT 53-0013027313-0	4-27-971-02-3330-0620-000-008600	316.28
						Check Total	<u>4,518.32</u>
	0100102432	03/13/24	866765581		2/UTILITIES ACCT 53-2359658-5	4-10-710-26-2600-0620-000-000000	13,458.76
						Check Total	<u>13,458.76</u>
						Vendor Total	<u>17,977.08</u>
						Grand Total	<u>1,308,370.28</u>

Cash Flow Financial Report
FY 2023-2024

		<u>Beginning Balance</u>	<u>Activity</u>	<u>Deposits</u>	<u>State Loan Deposits</u>	<u>Ending Balance</u>
Lake County School District						
Operating Account	July	\$ 840,295.63	\$ 1,512,477.60	\$ 1,837,931.73	\$ -	\$ 1,165,749.76
	August	\$ 1,165,749.76	\$ 2,681,723.95	\$ 1,850,783.98	\$ -	\$ 334,809.79
	September	\$ 334,809.79	\$ 1,501,732.04	\$ 795,744.15	\$ 1,049,705.00	\$ 678,526.90
	October	\$ 678,526.90	\$ 1,560,268.85	\$ 350,154.59	\$ 1,115,785.00	\$ 584,197.64
	November	\$ 584,197.64	\$ 1,654,583.20	\$ 1,473,339.77	\$ 705,404.00	\$ 1,108,358.21
	December	\$ 1,108,358.21	\$ 1,728,975.84	\$ 230,844.29	\$ 1,524,630.00	\$ 1,134,856.66
	January	\$ 1,134,856.66	\$ 1,573,071.61	\$ 683,595.81	\$ 977,624.00	\$ 1,223,004.86
	February	\$ 1,223,004.86	\$ 1,665,385.28	\$ 954,201.09	\$ -	\$ 511,820.67
	March	\$ 511,820.67	\$ 3,336,313.91	\$ 2,810,059.42	\$ 829,496.00	\$ 815,062.18
	April	\$ -	\$ -	\$ -		\$ -
	May	\$ -	\$ -	\$ -		\$ -
	June	\$ -	\$ -	\$ -		\$ -
Colostrust Account	July	\$ 3,661,144.01	\$ 1,250,000.00	\$ 316,941.42		\$ 2,728,085.43
	August	\$ 2,728,085.43	\$ 1,500,000.00	\$ 97,375.95		\$ 1,325,461.38
	September	\$ 1,325,461.38	\$ 500,000.00	\$ 321,722.02		\$ 1,147,183.40
	October	\$ 1,147,183.40	\$ -	\$ 736,541.21		\$ 1,883,724.61
	November	\$ 1,883,724.61	\$ 1,100,000.00	\$ 201,743.81		\$ 985,468.42
	December	\$ 985,468.42	\$ -	\$ 54,254.08		\$ 1,039,722.50
	January	\$ 1,039,722.50	\$ -	\$ 773,657.55		\$ 1,813,380.05
	February	\$ 1,813,380.05	\$ 600,000.00	\$ 431,022.94		\$ 1,644,402.99
	March	\$ 1,644,402.99	\$ 600,000.00	\$ 668,677.36		\$ 1,713,080.35
	April	\$ -	\$ -	\$ -		\$ -
	May	\$ -	\$ -	\$ -		\$ -
	June	\$ -	\$ -	\$ -		\$ -
Payroll Account	July	\$ 11,862.62	\$ 544,439.13	\$ 544,000.00		\$ 11,423.49
	August	\$ 11,423.49	\$ 886,169.43	\$ 885,853.52		\$ 11,107.58
	September	\$ 11,107.58	\$ 611,080.05	\$ 611,000.00		\$ 11,027.53
	October	\$ 11,027.53	\$ 646,660.41	\$ 647,000.00		\$ 11,367.12
	November	\$ 11,367.12	\$ 632,485.86	\$ 632,206.95		\$ 11,088.21
	December	\$ 11,088.21	\$ 614,586.08	\$ 614,000.00		\$ 10,502.13
	January	\$ 10,502.13	\$ 610,120.82	\$ 610,000.00		\$ 10,381.31
	February	\$ 10,381.31	\$ 633,087.38	\$ 633,000.00		\$ 10,293.93
	March	\$ 10,293.93	\$ 603,729.57	\$ 605,000.00		\$ 11,564.36
	April	\$ -	\$ -	\$ -		\$ -
	May	\$ -	\$ -	\$ -		\$ -
	June	\$ -	\$ -	\$ -		\$ -

LAKE COUNTY SCHOOL DISTRICT R-1
QUARTERLY FINANCIAL REPORT - 22-45-102(1)(b)(I-IV)

GENERAL FUND	FY2022-2023 (Prior Year) For Period Ending March 31, 2023			FY2023-2024 (Current Year) For Period Ending March 31, 2024			EXPECTED YEAR END BALANCE
	BUDGET	ACTUAL	PERCENTAGE OF BUDGET	BUDGET	ACTUAL	PERCENTAGE OF BUDGET	
BEGINNING FUND BALANCE	3,836,247.00	3,836,247.00		2,890,978.00	2,890,978.00		
REVENUE	12,001,860.00	3,921,420.66	32.67%	13,159,335.00	4,070,716.54	30.93%	
EXPENDITURES	13,544,939.00	9,034,822.09	66.70%	13,521,916.00	9,281,648.68	68.64%	
ENDING FUND BALANCE	2,293,168.00	(1,277,154.43)	-55.89%	2,528,397.00	(2,319,954.14)	-91.76%	2,528,397.00

UPK/CPP Fund	FY2022-2023 (Prior Year) For Period Ending March 31, 2023			FY2023-2024 (Current Year) For Period Ending March 31, 2024			EXPECTED YEAR END BALANCE
	BUDGET	ACTUAL	PERCENTAGE OF BUDGET	BUDGET	ACTUAL	PERCENTAGE OF BUDGET	
BEGINNING FUND BALANCE	46,720.00	46,720.00		100,401.00	100,401.00		
REVENUE	319,814.00	230,985.48	72.22%	319,814.00	286,527.78	89.59%	
EXPENDITURES	325,534.00	180,585.65	55.47%	420,215.00	85,100.67	20.25%	
ENDING FUND BALANCE	41,000.00	97,119.83	236.88%	-	301,828.11	#DIV/0!	-

FOOD SERVICE FUND	FY2022-2023 (Prior Year) For Period Ending March 31, 2023			FY2023-2024 (Current Year) For Period Ending March 31, 2024			EXPECTED YEAR END BALANCE
	BUDGET	ACTUAL	PERCENTAGE OF BUDGET	BUDGET	ACTUAL	PERCENTAGE OF BUDGET	
BEGINNING FUND BALANCE	208,503.00	208,503.00		-	-		
REVENUE	703,119.00	541,963.33	77.08%	1,011,609.00	622,754.46	61.56%	
EXPENDITURES	911,622.00	668,326.29	73.31%	1,011,609.00	690,405.60	68.25%	
ENDING FUND BALANCE	-	62,140.04	0.00%	-	(67,651.14)	0.00%	-

GRANT FUND	FY2022-2023 (Prior Year) For Period Ending March 31, 2023			FY2023-2024 (Current Year) For Period Ending March 31, 2024			EXPECTED YEAR END BALANCE
	BUDGET	ACTUAL	PERCENTAGE OF BUDGET	BUDGET	ACTUAL	PERCENTAGE OF BUDGET	
BEGINNING FUND BALANCE	-	-		-	-		
REVENUE	6,442,672.00	2,404,404.41	37.32%	3,834,831.00	1,767,138.30	46.08%	
EXPENDITURES	6,442,672.00	2,717,748.65	42.18%	3,834,831.00	1,978,988.09	51.61%	
ENDING FUND BALANCE	-	(313,344.24)		-	(211,849.79)		-

"THE CENTER FUND"	FY2022-2023 (Prior Year) For Period Ending March 31, 2023			FY2023-2024 (Current Year) For Period Ending March 31, 2024			EXPECTED YEAR END BALANCE
	BUDGET	ACTUAL	PERCENTAGE OF BUDGET	BUDGET	ACTUAL	PERCENTAGE OF BUDGET	
BEGINNING FUND BALANCE	68,052.00	68,052.00		105,722.00	105,722.00		
REVENUE	424,690.00	324,607.59	76.43%	319,860.00	277,383.04	86.72%	
EXPENDITURES	492,742.00	307,320.62	62.37%	425,582.00	190,668.92	44.80%	
ENDING FUND BALANCE	-	85,338.77	#DIV/0!	-	192,436.12	#DIV/0!	-

HEAD START FUND	FY2022-2023 (Prior Year) For Period Ending March 31, 2023			FY2023-2024 (Current Year) For Period Ending March 31, 2024			EXPECTED YEAR END BALANCE
	BUDGET	ACTUAL	PERCENTAGE OF BUDGET	BUDGET	ACTUAL	PERCENTAGE OF BUDGET	
BEGINNING FUND BALANCE	-	-		-	-		
REVENUE	929,119.00	428,859.76	46.17%	932,951.00	543,888.31	58.30%	
EXPENDITURES	929,119.00	504,466.48	54.30%	932,951.00	623,382.92	66.82%	
ENDING FUND BALANCE	-	(75,506.72)		-	(79,494.61)		-

BOND FUND 31	FY2022-2023 (Prior Year) For Period Ending March 31, 2023			FY2023-2024 (Current Year) For Period Ending March 31, 2024			EXPECTED YEAR END BALANCE
	BUDGET	ACTUAL	PERCENTAGE OF BUDGET	BUDGET	ACTUAL	PERCENTAGE OF BUDGET	
BEGINNING FUND BALANCE	2,646,866.00	2,646,866.00		2,942,007.00	2,942,007.00		
REVENUE	1,904,148.00	373,363.90	19.61%	1,904,148.00	441,045.14	23.16%	
EXPENDITURES	1,657,621.00	1,368,408.35	84.36%	1,677,132.00	1,414,834.35	84.36%	
ENDING FUND BALANCE	2,893,393.00	1,621,821.55	56.05%	3,169,023.00	1,968,217.79	62.11%	3,169,023.00

CAPITAL RESERVE 43	FY2022-2023 (Prior Year) For Period Ending March 31, 2023			FY2023-2024 (Current Year) For Period Ending March 31, 2024			EXPECTED YEAR END BALANCE
	BUDGET	ACTUAL	PERCENTAGE OF BUDGET	BUDGET	ACTUAL	PERCENTAGE OF BUDGET	
BEGINNING FUND BALANCE	410,104.00	410,104.00		589,732.00	589,732.00		
REVENUE	509,891.00	234,016.98	45.90%	76,929.00	76,654.55	99.90%	
EXPENDITURES	475,168.00	128,734.03	27.09%	313,611.00	260,618.74	83.10%	
ENDING FUND BALANCE	444,827.00	515,386.95	115.86%	353,050.00	405,967.81	114.99%	353,050.00

INSURANCE FUND 64	FY2022-2023 (Prior Year) For Period Ending March 31, 2023			FY2023-2024 (Current Year) For Period Ending March 31, 2024			EXPECTED YEAR END BALANCE
	BUDGET	ACTUAL	PERCENTAGE OF BUDGET	BUDGET	ACTUAL	PERCENTAGE OF BUDGET	
BEGINNING FUND BALANCE	132,582.00	132,582.00		98,958.00	98,958.00		
REVENUE	2,200,000.00	1,834,618.61	83.39%	2,200,000.00	1,738,290.46	79.01%	
EXPENDITURES	2,119,200.00	2,014,514.93	95.06%	2,208,158.00	1,887,636.39	85.48%	
ENDING FUND BALANCE	213,382.00	(47,314.32)	-22.17%	90,800.00	(50,387.93)	-55.49%	90,800.00