



**District
Mission:**

Lake County School District creates safe and inclusive learning environments where students belong and are empowered to develop the knowledge, skills, and character to thrive and contribute in a changing world.

**Board
Priorities:**

Strategic
Direction #1:
Pursuing
Educational
Excellence

Strategic
Direction #2:
Enhancing
Student
Experience

Strategic
Direction #3:
Expanding
Family and
Community
Collaboration

Lake County School District Board of Education
May 11, 2026 5:30 pm Regular Meeting
Location: District Office-Room 11 & via Zoom

1. 5:30 Call to order
2. 5:31 Pledge of Allegiance
3. 5:32 Roll Call
4. 5:33 Preview Agenda
5. 5:34 Public Participation
Members of the public who wish to address the board on non-agenda items are welcome to do so at this time. Please sign up with board secretary. We ask you to please observe the following guidelines:
 - Confine your comments to matters that are germane to the business of the School District.
 - Recognize that students often attend or view our meetings. Speaker's remarks, therefore, should be suitable for an audience that includes kindergarten through twelfth grade students.
 - Understand that the board cannot discuss specific personnel matters or specific students in a public forum.
6. 5:40 Consent Agenda
 - a. April 13, 2026 Regular Meeting Minutes
 - b. Employee Status
 - c. Board Member time sheets
 - d. Resolution NO. 26-21 Increase in Funds 22, 10, 19 and 26
 - e. ESEA General Assurances Form
7. 5:41 Daniels Fund Scholarship recognition
8. 5:45 Lake County School Board Proclamation 26-01-Measles Response
9. 5:55 No Screen experiment-Dylan Kane
10. 6:05 Facility Planning and Next Steps Discussion
11. 7:00 Communication Norms
12. 7:10 Action Items
 - a. Resolution NO. 26-20 Nonrenewal
 - b. Second Reading, Adoption and Repeal of Board policies
 - c. Head Start-Incident Reporting, Staff Qualifications, In-Kind Policy
13. 7:15 Discussion item
 - a. Administrative Policy DJE
14. 7:25 Graduation Expectations
15. 7:30 Superintendent update
16. 7:40 Board Reports
17. 7:45 Agenda Planning
18. Informational Items
 - a. LCSD Budget Reports
 - b. Bright Start Update
19. Adjourn
20. Upcoming meeting or event:
 - a. May 26, 2026 Special Meeting @ 5:30 pm @ District Office/Zoom
 - b. June 8, 2026 Regular Meeting @ 5:30 pm @ District Office/Zoom
 - c. June 13, 2026 Members of the Board may attend CCHS Graduation @ 8:30 am @ LCHS
 - d. June 13, 2026 Members of the Board may attend LCHS Graduation @ 10:30 am @ LCHS

Estimated duration of meeting is 2.5 to 3 hours **Updated 5/7/26

A few welcoming notes:

The board's meeting time is dedicated to its strategic mission and top priorities. • The "consent agenda" has items which have either been discussed prior or are highly routine. By not discussing these issues, we are able to spend time on our most important priorities. • "Public participation" is an opportunity to present brief comments or pose questions to the board for consideration or follow-up. Time limits are 3 minutes for individual speakers if fewer than 20 individuals have signed up to speak; 2 minutes' limit and 5 minutes for groups of 20 signed up; and 1 minute for individual and 3 minutes for groups if more than 30 have signed up to speak. Please see Board Policy GP-14 (Governance Process) for the full policy. The boundaries are designed to help keep the strategic meeting focused and in no way limits conversations beyond the board meeting. • Your insights are needed and welcomed and the board encourages you to request a meeting with any board member, should you have something to discuss. • If you are interested in helping the district's achievement effort, please talk with any member of the leadership team or call the district office at 719-486-6800. Opportunities abound. Your participation is highly desired.



Misión del Distrito:

El Distrito Escolar del Condado de Lake crea entornos de aprendizaje seguros e inclusivos donde los estudiantes pertenecen y están empoderados para desarrollar los conocimientos, las habilidades, y el carácter necesarios para prosperar y contribuir en un mundo cambiante.

Prioridades de la junta:

Dirección Estratégica n.º 1: Buscar la Excelencia Educativa

Dirección Estratégica n.º 2: Mejorar la Experiencia Estudiantil

Dirección Estratégica n.º 3: Ampliar la Colaboración con Familias y la Comunidad

Junta de Educación del Distrito Escolar del Condado de Lake
23 de marzo de 2026 5:30 pm Reunión ordinaria
Ubicación: Oficina del distrito y via Zoom

1. 5:30 Llamada al orden
2. 5:31 Juramento a la bandera
3. 5:32 Pasar lista
4. 5:33 Vista previa de la agenda
5. 5:34 Participación pública

Los miembros del público que deseen dirigirse a la junta sobre temas que no estén en la agenda pueden hacerlo en este momento. Regístrese con el secretario de la junta. Le pedimos que observe las siguientes pautas:

- Limite sus comentarios a asuntos relacionados con los negocios del Distrito Escolar.
 - Reconozca que los estudiantes a menudo asisten o ven nuestras reuniones. Por lo tanto, los comentarios del orador deben ser adecuados para una audiencia que incluya a estudiantes de jardín de infantes a duodécimo grado.
 - Entender que la junta no puede discutir asuntos específicos de personal o estudiantes específicos en un foro público.
6. 5:40 Orden del día consensuado
 - a. Acta de la reunión ordinaria del 13 de abril de 2026
 - b. Estado del empleado
 - c. Hojas de asistencia de los miembros de la junta
 - d. Resolución N.º 26-21: Aumento de fondos 22 y 10
 - e. ESEA General Assurances Form
 7. 5:41 Reconocimiento de la beca Daniels Fund
 8. 5:45 Proclamación 26-01 de la Junta Escolar del Condado de Lake: Respuesta ante el sarampión
 9. 5:55 Experimento "Sin pantallas" - Dylan Kane
 10. 6:05 Discusión sobre la planificación de instalaciones y próximos pasos
 11. 7:00 Normas de comunicación
 12. 7:10 Temas de acción
 - a. Resolución N.º 26-20: No renovación
 - b. Segunda lectura, adopción y derogación de políticas de la Junta Directiva
 - c. Head Start-Incident Reporting, Staff Qualifications, In-Kind Policy
 13. 7:15 Punto de discusión
 - a. Política administrativa DJE
 14. 7:25 Expectativas de graduación
 15. 7:30 Actualización del Superintendente
 16. 7:40 Informes de la Junta
 17. 7:45 Planificación de la Agenda
 18. Temas Informativos
 - a. Informes Presupuestarios del LCSD
 - b. Actualización sobre Bright Start
 19. Aplazar
 20. Próxima reunión o evento:
 - a. 26 de mayo de 2026: Reunión especial a las 5:30 p. m. en la Oficina del Distrito/Zoom.
 - b. 8 de junio de 2026: Reunión ordinaria a las 5:30 p. m. en la Oficina del Distrito/Zoom.

A few welcoming notes:

The board's meeting time is dedicated to its strategic mission and top priorities. • The "consent agenda" has items which have either been discussed prior or are highly routine. By not discussing these issues, we are able to spend time on our most important priorities. • "Public participation" is an opportunity to present brief comments or pose questions to the board for consideration or follow-up. Time limits are 3 minutes for individual speakers if fewer than 20 individuals have signed up to speak; 2 minutes' limit and 5 minutes for groups of 20 signed up; and 1 minute for individual and 3 minutes for groups if more than 30 have signed up to speak. Please see Board Policy GP-14 (Governance Process) for the full policy. The boundaries are designed to help keep the strategic meeting focused and in no way limits conversations beyond the board meeting. • Your insights are needed and welcomed and the board encourages you to request a meeting with any board member, should you have something to discuss. • If you are interested in helping the district's achievement effort, please talk with any member of the leadership team or call the district office at 719-486-6800. Opportunities abound. Your participation is highly desired.



- c. 13 de junio de 2026: Los miembros de la Junta pueden asistir a la graduación de CCHS a las 8:30 a. m. en LCHS.
- d. 13 de junio de 2026: Los miembros de la Junta pueden asistir a la graduación de LCHS a las 10:30 a. m. en LCHS

La duración estimada de la reunión es de 2,5 a 3 horas ** Actualizado 5/7/26

Algunas notas de bienvenida:

El tiempo de reunión de la junta se dedica a su misión estratégica y sus principales prioridades. • La "agenda de consentimiento" tiene elementos que han sido discutidos previamente o son muy rutinarios. Al no discutir estos temas, podemos dedicar tiempo a nuestras prioridades más importantes. • La "participación pública" es una oportunidad para presentar breves comentarios o plantear preguntas a la junta para su consideración o seguimiento. Los límites de tiempo son 3 minutos para oradores individuales si menos de 20 personas se han inscrito para hablar; Límite de 2 minutos y 5 minutos para grupos de 20 inscritos; y 1 minuto para individuales y 3 minutos para grupos si más de 30 se han inscrito para hablar. Consulte la Política de la Junta GP-14 (Proceso de gobernanza) para conocer la política completa). Los límites están diseñados para ayudar a mantener la reunión estratégica enfocada y de ninguna manera limita las conversaciones más allá de la reunión de la junta. • Sus ideas son necesarias y bienvenidas y la junta le anima a solicitar una reunión con cualquier miembro de la junta, en caso de que tenga algo que discutir. • Si está interesado en ayudar en el esfuerzo de rendimiento del distrito, hable con cualquier miembro del equipo de liderazgo o llame a la oficina del distrito al 719-486-6800. Abundan las oportunidades. Su participación es muy deseada d.

A few welcoming notes:

The board's meeting time is dedicated to its strategic mission and top priorities. • The "consent agenda" has items which have either been discussed prior or are highly routine. By not discussing these issues, we are able to spend time on our most important priorities. • "Public participation" is an opportunity to present brief comments or pose questions to the board for consideration or follow-up. Time limits are 3 minutes for individual speakers if fewer than 20 individuals have signed up to speak; 2 minutes' limit and 5 minutes for groups of 20 signed up; and 1 minute for individual and 3 minutes for groups if more than 30 have signed up to speak. Please see Board Policy GP-14 (Governance Process) for the full policy). The boundaries are designed to help keep the strategic meeting focused and in no way limits conversations beyond the board meeting. • Your insights are needed and welcomed and the board encourages you to request a meeting with any board member, should you have something to discuss. • If you are interested in helping the district's achievement effort, please talk with any member of the leadership team or call the district office at 719-486-6800. Opportunities abound. Your participation is highly desired.

SCHOOL BOARD MINUTES

Regular Meeting

April 13, 2026

Meeting called to order –Director Lozano called the meeting to order.

Roll Call of Members - The regular meeting of the Board of Directors for Lake County School District R-1 was called to order on April 13, 2026 at 4:00 p.m. and was held at the District Office and via Zoom. Directors Contreras, Cooper, Earley, Lozano, Snyder and Superintendent Bartlett were present.

Pledge of Allegiance –Director Lozano led the pledge of allegiance.

Preview of agenda- No changes needed.

Public Participation- N/A

Action items- It was moved by Director Contreras to approve the consent agenda. Director Cooper seconded the motion;

	Contreras	Cooper	Earley	Lozano	Snyder
Aye	X	X	X	X	X
Nay					
Absent					
Abstain					

motion carried 5-0-0-0.

Spotlights- Brandi Lovely, LCES principal, and Cheryl Talbot, LCIS principal, were in attendance and share an update on LCES and LCIS.

Prevention and School Safety (PASS) Team update- Taylor Trelka, Colleen Nielsen and Kerri Quinlan gave an update on the work the PASS Team is working on.

Bright Start update- Megan Vinci gave an update from Bright Start.

A short break was taken and the meeting resumed.

Strategic Planning- Susan Meek and Cheri Wrench from Sparks and Compass were in attendance and spoke regarding the Strategic Plan and shared the work with the board.

Action items- It was moved by Director Earley to approve the proposed Strategic Planning.

Director Contreras seconded the motion;

	Contreras	Cooper	Earley	Lozano	Snyder
Aye	X	X	X	X	X
Nay					
Absent					
Abstain					

motion carried 5-0-0-0.

The board completed a first reading of policies, SP-1, GP-1, GP-7E, BSR-5 and BSR-5E and spoke regarding polices that will need to be repealed.

It was moved by Director Snyder to approve the second reading and adoption of policy SSG-5.

Director Contreras seconded the motion;

	Contreras	Cooper	Earley	Lozano	Snyder
Aye	X	X	X	X	X
Nay					
Absent					
Abstain					

motion carried 5-0-0-0.

It was moved by Director Cooper to approve the Head Start ERSEA policies: Eligibility Policy, Recruitment Policy, Selection Policy, Enrollment Policy and Attendance Policy. Director Earley seconded the motion;

	Contreras	Cooper	Earley	Lozano	Snyder
Aye	X	X	X	X	X
Nay					
Absent					
Abstain					

motion carried 5-0-0-0.

Superintendent Update- Superintendent Bartlett reported on planning to attend a BOCC meeting regarding the pool and the Head Start review on week of May 18th.

Board Reports- Director Contreras spoke of attending Policy Council. Director Cooper spoke of the finance committee being next week. Director Earley spoke of the DAC meeting. Director Lozano spoke of the BOCES meeting. Director Snyder had no report.

Upcoming meetings and agenda planning were discussed.

A short break was taken and the meeting resumed.

Finance Update- Jim Mulcey, CFO, shared a financial update with the board in preparation of negotiations.

Director Lozano, as the president, stated that the board has issues to discuss in Executive Session as follows: Pursuant to Section 24-6-402(4)(e)(I), C.R.S. for purposes of determining positions relative to matters that may be subject to negotiations, developing strategy for negotiations, and instructing negotiators regarding the Master Agreements with the Lake County Education Association(LCEA) and American Federation of State, County and Municipal Employees (ASFCME); pursuant to Section 24-6-402(4)(e)(III), C.R.S. for purposes of developing the strategy of the school district for negotiations relating to collective bargaining with the Lake County Education Association and AFSCME (American Federation of State, County and Municipal Employees). Superintendent Bartlett and Jim Mulcey, CFO, were invited into executive session.

It was moved by Director Contreras to convene in executive session. Director Snyder seconded the motion;

	Contreras	Cooper	Earley	Lozano	Snyder
Aye	X	X	X	X	X
Nay					
Absent					
Abstain					

motion carried 5-0-0-0.

Executive session began at 7:48 pm. In attendance: Stacey Contreras, Grayson Cooper, Melissa

Earley, Miriam Lozano, Lauren Snyder, Kate Bartlett (superintendent) and Jim Mulcey (CFO). Topics of discussion in executive session included: Pursuant to Section 24-6-402(4)(e)(I), C.R.S. for purposes of determining positions relative to matters that may be subject to negotiations, developing strategy for negotiations, and instructing negotiators regarding the Master Agreements with the Lake County Education Association(LCEA) and American Federation of State, County and Municipal Employees (ASFCME); pursuant to Section 24-6-402(4)(e)(III), C.R.S. for purposes of developing the strategy of the school district for negotiations relating to collective bargaining with the Lake County Education Association and AFSCME (American Federation of State, County and Municipal Employees).

Executive session lasted for 1 hour and 22 minutes and ended at 9:10 pm.

A short break was taken and the regular meeting resumed at 9:11 pm.

It was moved by Director Cooper to adjourn the meeting. Director Snyder seconded the motion; motion carried.

Meeting adjourned at 9:11 pm.

ATTEST:

Melissa Earley, Secretary

Miriam Lozano, President

**Lake County School District R-1
Employee Status Report**

prepared: 5/5/2026

May 11, 2026

Certified Staff

Recommended for Hire

Name	Assignment	Degree	License- Endorsement	Experience

Name	Current Assignment	Transfer Assignment	Location	Effective

Resignations/Terminations

Miller, Jennifer	English		LCHS	4.23.2026

--	--	--	--	--

_____ Miriam Lozano, President			_____ Melissa Earley , Secretary	

Lake County School District R-1

prepared: 5/5/2026

Employee Status Report

April 13, 2026

<u>Certified/Staff</u>		
Elementary Level Counselor	LCES	2026-2027
English Language Development Instructional Paraprofessional	LCHS	2026-2027
Full Time Bus Driver	District	3/16/2026
Special Education Teacher	LCES	2026-2027
Substitute- Teacher, Cook, Custodian	District	2025-2026
<u>Coaches</u>		
Assistant High School Volleyball Coach, C Team		2026-2027
Head Middle School Boys Basketball Coach		2026-2027
Head Middle School Football Coach		2026-2027
High School Boys Head Soccer Coach		2026-2027
HS Head Girls' Soccer Coach		2026-2027
MS Girls' Volleyball Assistant Coach		2026-2027
MS Head Girls' Volleyball Coach		2026-2027
Game Officials		ongoing

**Lake County School District
328 West 5th Street
Leadville, CO 80461**

RESOLUTION NO. 26-21

BE IT RESOLVED THAT, the Board of Education of Lake County School District R-1 authorizes an increase in the 2025-2026 Funds as follows:

Fund 22 Grants Fund

Title II, Part A Reallocated Grant (new aquisition)	\$7,218.00
Title IV-Part A Reallocated Grant (new aquisition)	\$3,988.00

Fund 10 General Fund

Insurance Claim revenue for generator repair (new aquisition)	\$24,234.00
--	-------------

Fund 19 Grant Fund

Increase in Grant code 3897 (increased appropriations)	\$40,000.00
Increase in Grant code 3896 (increased appropriations)	\$7,000.00

Fund 26 Grants Fund

Lake County Community Fund Donation for Early Care and Education (new aquisition)	\$15,000.00
--	-------------

Total \$97,440.00

Melissa Earley, Secretary

Miraim Lozano, President

Dated: May 11, 2026



ESEA General Assurances Form

Local Educational Agency (LEA) Name: Lake County School District **LEA Code:** 1510

Purpose:

The purpose of the form is to collect the requisite general assurances for the administration of ESEA Title programs in a single location. The ESEA General Assurances form replaces the Single Assurances form previously collected for the administration of all Federal programs. The ESEA General Assurances form includes the general assurances outlined in the Every Student Succeeds Act (ESSA), as well as the assurances required of all recipients of Federal funds.

Instructions:

Every local education agency (LEA) and board of cooperative educational services (BOCES) must submit an executed ESEA General Assurances form before the grant recipient will be granted substantial approval.

A copy of the signed form must be kept on file at your central office for review upon request by independent auditors, or State or Federal officials. Staff responsible for grants administration or fiscal management should either have a copy of the document or be informed of the location and contents of the document.

Commitments:

This assurance form shall remain in effect for the duration of the programs it covers. The State shall not require the submission or amendment of this assurance form unless required by changes in Federal or State law or by other significant change in circumstances affecting the assurances contained herein.

Compliance with these assurances constitutes a condition of continued receipt of Federal financial assistance and is binding upon the district, administrative unit, LEA, BOCES or other entity, its successors, transferees and assignees for the duration of the programs.

In the event of failure to comply with these assurances, it is understood that funds can be terminated and the right to receive further assistance can be denied.

These are statutorily required assurances for the receipt of Federal funds under the specifically designated programs. In addition, recipients are required to fulfill all statutory, regulatory and program plan requirements inherent in the application and approval process for each program.

In consideration of participating in any educational program for which Federal funds are available including, but not limited to, ESEA Title programs and any Federal competitive grant program administered by the Colorado Department of Education, and of receiving Federal funds to carry out any such program, the board of directors of (name of LEA) the Lake County School District





by action at its meeting on 4/27/2026, provides the following assurances to the Colorado Department of Education.

The LEA assures that it is, or will take action to become, in compliance with the following:

- The LEA will administer each program covered by the ESEA application in accordance with all applicable statutes, regulations, program plans, and applications (§8306(a)(1)), including but not limited to federal education program laws, the Title regulations in 34 CFR Part 200, the General Education Provisions Act (GEPA), and the Education Department Federal Administrative Regulations (EDGAR) in 34 CFR Parts 76, (except for 76.650-76.662), 77, 79, 81, and 82, 2 CFR 3485, and the Uniform Grants Guidance in 2 CFR 200 and 3474.
- The LEA will ensure that the control of funds provided to the LEA under each program, and title to property acquired with those funds, will be in a public agency or in an eligible private agency, institution, organization, or Indian tribe, if the law authorizing the program provides for assistance to those entities, and that a public agency, eligible private agency, institution, or Indian Tribe will administer those funds and property to the extent required by the authorizing statutes (§8306(a)(2)(A & B)).
- The LEA will adopt and use proper methods of administering each program, including the enforcement of any obligations imposed by law on agencies, institutions, organizations, and other recipients responsible for carrying out each program and the correction of deficiencies in program operations that are identified through audits, monitoring, or evaluation. (§306(a)(3)(A&B)).
- The LEA will cooperate in carrying out any evaluation of each such program conducted by or for the SEA, the Secretary, or other Federal officials (§8306(a)(4)).
- The LEA will use fiscal control and fund accounting procedures that will ensure proper disbursement of, and accounting for, Federal funds paid to that agency under each program (§8306(a)(5)).
- The LEA will submit such reports to the State educational agency (which shall make the reports available to the Governor) and the Secretary as the State educational agency and Secretary may require to enable the State educational agency and the Secretary to perform their duties under each such program (§8306(a)(6)(A)).
- The LEA will maintain such records, provide such information, and afford such access to the records as the State educational agency (after consultation with the Governor) or the Secretary may reasonably require to carry out the State educational agency's or the Secretary's duties (§8306(a)(6)(B)).
- The LEA afforded a reasonable opportunity for public comment on the application and considered such comment before the application was submitted (§8306(a)(7)).
- The LEA will provide, on a request made by military recruiters or an institution of higher education, access to the name, address, and telephone listing of each secondary school student served by the LEA, unless the parent of each student has submitted the prior consent request which, upon receiving, prohibits the LEA from releasing such information without the prior written consent of the parent (§8528).





- The LEA will ensure that a student who is attending a persistently dangerous public elementary or secondary school, or who becomes a victim of a violent criminal offense while in or on the grounds of a public elementary or secondary school, will be allowed to attend a safe public elementary or secondary school within the local educational agency, including a public charter school (§8532).
- The LEA will ensure that all funds received under ESEA will be used to supplement and not supplant those from other sources otherwise available to continue current or past efforts.
- Title VI of the Civil Rights Act of 1964 (42 U.S.C. § 2000d through 2000d-4) to the end that no person in the United States shall; on the ground of race, color, or national origin, be excluded from participation in, be denied the benefits of, or be otherwise subjected to discrimination under any program or activity receiving Federal financial assistance from the Department of Education. (34 C.F.R. Part 100)
- To the extent applicable, the LEA will include in its local application a description of how the LEA will comply with the requirements of section 427 of GEPA (20 U.S.C. 1228a). The description must include information on the steps the LEA proposes to take to permit students, teachers, and other program beneficiaries to overcome barriers (including barriers based on gender, race, color, national origin, disability, and age) that impede equal access to, or participation in, the program.
- A student shall not be admitted to, or excluded from, any federally assisted education program on the basis of a surname or language-minority status. Section 1112(e)(3)(A-D)
- The LEA certifies that no policy of the LEA prevents, or otherwise denies participation in, constitutionally protected prayer in public elementary schools and secondary schools (§ 8524(b)).
- Section 504 of the Rehabilitation Act of 1973 (29 U.S.C. §794), no qualified handicapped person shall, on the basis of handicap, be excluded from participation in, be denied the benefits of, or otherwise be subjected to discrimination under any program or activity which receives Federal financial assistance. (34 C.F.R. Part 104)
- Title II of the Americans With Disabilities Act (42 U.S.C. §§ 12131-34) and its implementing regulations which prohibit discrimination on the basis of disability by public entities ((28 C.F.R. Part 35), or with Title III of the Americans with Disabilities Act (42 U.S.C. §§12181-89) and its implementing regulations which prohibit discrimination on the basis of disability by covered public accommodations and requires places of public accommodation and commercial facilities to be designed, constructed, and altered in compliance with the accessibility standards established in the implementing regulations (28 C.F.R. Part 36) whichever is applicable.
- Title IX of the Education Amendments of 1972 (20 U.S.C. §1681-1683), as amended by Pub. L. 93–568, 88 Stat. 1855 (except §904 and §906 of those Amendments) which is designed to eliminate (with certain exceptions) discrimination on the basis of sex in any education program or activity receiving Federal financial assistance, whether or not such program or activity is offered or sponsored by an educational institution as defined in this part (34 C.F.R. Part 106).
- Age Discrimination Act of 1975 (42 U.S.C. §6101 et seq.), as amended, and its implementing regulations, prohibits discrimination on the basis of age in programs or activities receiving Federal financial assistance. The Act permits federally assisted programs or activities, and





recipients of Federal funds, to continue to use age distinctions and factors other than age that meet the requirements of the Act (34 C.F.R. Part 110).

- The LEA will provide reasonable opportunities for the participation by teachers, parents, and other interested agencies, organizations, and individuals in the planning for and operation of each program (20 USC §1232e(b)(5)).
- The LEA will ensure that any application, evaluation, periodic program plan or report relating to each program will be made readily available to parents and other members of the general public (20 USC §1232e(b)(6)).
- The LEA has adopted effective procedures for acquiring and disseminating to teachers and administrators participating in each program significant information from educational research, demonstrations, and similar projects, and for adopting, where appropriate, promising educational practices developed through such projects (20 USC §1232e(b)(8)).
- The LEA will ensure that no ESEA funds will be used to acquire equipment (including computer software) in any instance in which such acquisition results in a direct financial benefit to any organization representing the interests of the purchasing entity or its employees or any affiliate of such an organization (20 USC §1232e(b)(9)).
- The LEA has adopted appropriate procedures to implement the terms of the Family Educational Rights and Privacy Act of 1974 (20 U.S.C. §1232g) and its regulations (34 C.F.R. Part 99)
- The LEA will ensure that the pupil rights delineated in 20 U.S.C. §1232h are protected.
- The LEA must comply with the requirements under the Gun-Free Schools Act (ESEA §8561), and the Nonsmoking Policy for Children’s Services (ESEA §8573).
- To the extent authorized by law, the LEA shall indemnify, save and hold harmless the State, its employees and agents, against any and all claims, damages, liability and court awards including costs, expenses and attorney(s)’ fees incurred as a result of any act or omission by it, or its employees, agents, subcontractors or assignees in its operation of the programs.
- The LEA will comply with all applicable assurances in OMB Standard Forms 424B and D (Assurances for Non-Construction and Construction Programs), including the assurances relating to the legal authority to apply for assistance; access to records; conflict of interest; merit systems; nondiscrimination; Hatch Act provisions; labor standards; flood hazards; historic preservation; protection of human subjects; animal welfare; lead-based paint; Single Audit Act; and the general agreement to comply with all applicable Federal laws, executive orders and regulations.
- With respect to the certification regarding lobbying in Department Form 80-0013, no Federal appropriated funds have been paid or will be paid to any person for influencing or attempting to influence an officer or employee of any agency, a Member of Congress, an officer or employee of Congress, or an employee of a Member of Congress in connection with the making or renewal of Federal grants under this program; the SEA will complete and submit Standard Form-LLL, “Disclosure Form to Report Lobbying,” when required (34 C.F.R. Part 82, Appendix B); and the SEA will require the full certification, as set forth in 34 C.F.R. Part 82, Appendix A, in the award documents for all subawards at all tiers.





COLORADO
Department of Education

Signature of LEA Board President

Name of LEA Board President

Date



May 11, 2026

Dear Jaren Peters ,

On behalf of the entire Lake County School District Board of Education, we wish to extend our most heartfelt congratulations to you on receiving the Daniels Scholarship. This achievement is a true reflection of your exceptional character, leadership potential, and academic excellence.

Your selection as a Daniels Scholar highlights the admirable qualities you have consistently demonstrated-integrity, a commitment to community service, emotional maturity, and a well-rounded approach to your education and personal development. These qualities distinguish you as a leader among your peers and serve as an inspiration to all within our district.

We look forward to all that the future holds for you, as this scholarship presents exceptional opportunities for personal growth, academic achievement, and continued leadership. The Lake County School District Board of Education is proud of your accomplishments and confident that you will continue to make a meaningful impact in the years ahead.

Sincerely,

Lake County School District Board of Education

Miriam Lozano, President

Grayson Cooper, Vice President

Lauren Snyder, Treasurer

Melissa Earley, Secretary

Stacy Contreras, Director

Lake County School Board Proclamation 26-01

In recognition of exemplary service and community partnership in response to an outbreak of measles in Lake County

WHEREAS, the health and safety of our students, staff, and the community are of the utmost importance to the Lake County School District; and

WHEREAS, a recent measles case involving a student in the District presented a potential risk to the child and our community; and

WHEREAS, the coordinated response between Lake County School District staff and the county public health agency demonstrated exceptional professionalism, clear communication, and a shared commitment to public wellbeing; and

WHEREAS, school personnel and local public health officials worked collaboratively and efficiently to provide timely, accurate information to students and families, ensuring a well-organized and effective response; and

WHEREAS, this strong partnership and dedication helped prevent further spread of the virus, resulting in no additional cases beyond the initial household and avoiding widespread disruption to our schools; and

WHEREAS, the efforts of these teams have been recognized by the State of Colorado as setting a high standard for community response and interagency collaboration;

NOW, THEREFORE, BE IT PROCLAIMED that the Lake County School District Board of Education hereby recognizes and commends School Nurse Colleen Nielson and the staff of the Lake County Public Health Agency for their outstanding service, professionalism, and unwavering commitment to the health and safety of Lake County.

BE IT FURTHER PROCLAIMED that we extend our sincere appreciation for their dedication and their exemplary demonstration of teamwork in service to our community.

Recognized this 11th day of May, 2026, by the Lake County School District Board of Education.

May 11, 2026

On behalf of the Lake County School Board, we would like to extend our sincere gratitude and recognition to our school nurse, Colleen Nielson, and the dedicated staff of the Lake County Public Health Agency for their outstanding response to the recent measles case in our community.

From the very beginning, the level of collaboration, professionalism, and shared commitment to our community's wellbeing was evident. School and public health staff worked side by side, demonstrating clear communication, strong coordination, and a unified approach during a rapidly evolving situation.

The teamwork displayed throughout this response was exceptional. Accurate information was quickly shared with students and families, and plans were implemented efficiently to ensure access to necessary resources. The ability of these teams to work seamlessly together helped create a calm, organized, and effective response during what could have been a far more disruptive event.

Despite the potential for widespread exposure, there have been no additional cases beyond the initial household and no need for broad quarantines. We understand from the state health department that our community's response has set a high standard for other counties across Colorado.

This experience highlights the strength of partnership between our school district and public health agency, and the dedication of individuals who put the health and safety of Lake County first. We are deeply grateful for the professionalism, cooperation, and care shown by everyone involved.

Sincerely,
Lake County School Board

Thinking About Classroom Technology

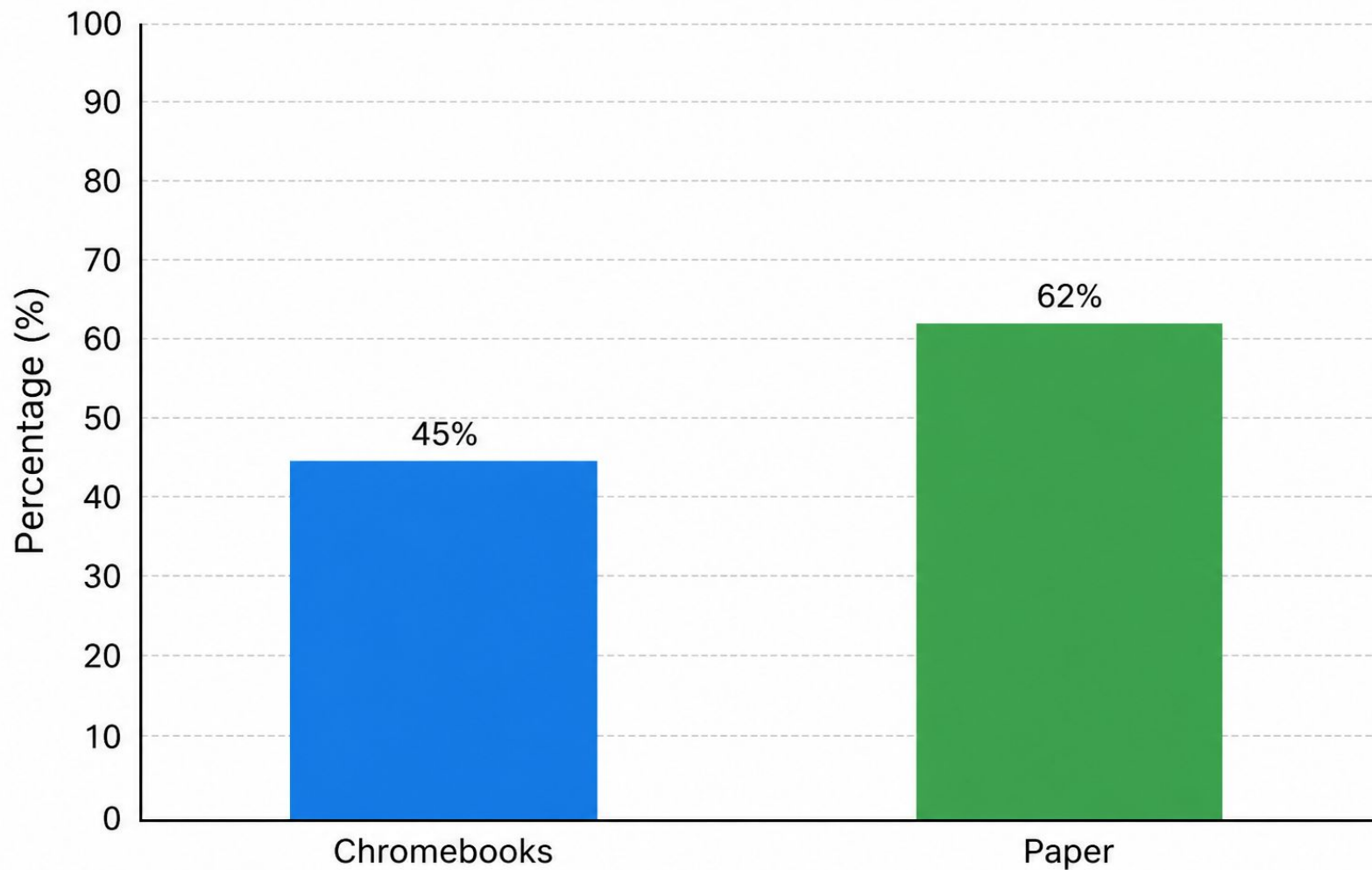
Thinking -> Learning

What I Did Before

- About 20% of class time on screens
- Loaner Chromebooks and chargers
- Power strips everywhere
- Limited web use to a “whitelist”

Some Drawbacks of Technology

- It doesn't work
- The gravity of screens
- Videogamification
- Making learning too easy
- Effort
- Accountability
- Human connection



Bold Italics = Observable

∨ Level 1 Practices

THE TEACHER:

- Plans lessons incorporating available technology.
- Assesses available technology to use with instruction.

∨ Level 2 Practices

...and THE TEACHER:

uses available technology to:

- facilitate classroom instruction.*
- Develop students' knowledge and skills based on lesson outcomes.*
- Models responsible and ethical use of technology and applications.*

∨ Level 3 Practices

...and THE TEACHER:

integrates available technology to enhance:

- Creativity.*
- Use of information.*
- Collaboration.*

∨ Level 4 Practices

...and STUDENTS:

- Demonstrate responsible and ethical digital citizenship.*
- Use available technology to apply team-building skills.*

∨ Level 5 Practices

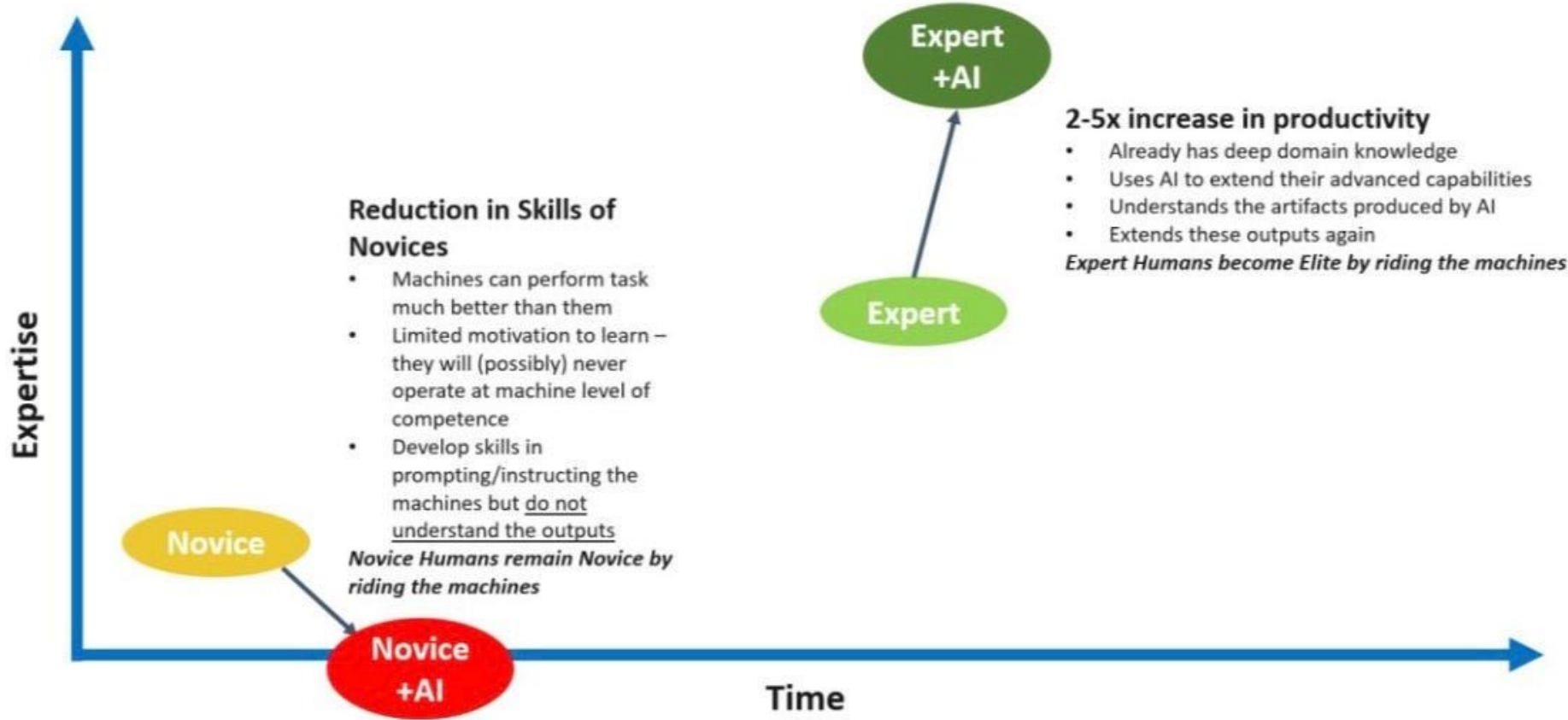
...and STUDENTS:

- Self-select appropriate technology tools based on lesson outcomes.*
- Create artifacts and design tools to solve authentic problems.*

The Unrealized Promises of Technology

- Immediate feedback
- Data
- Saving time
- The future

Figure 7: Experts vs Novices in the World of AI



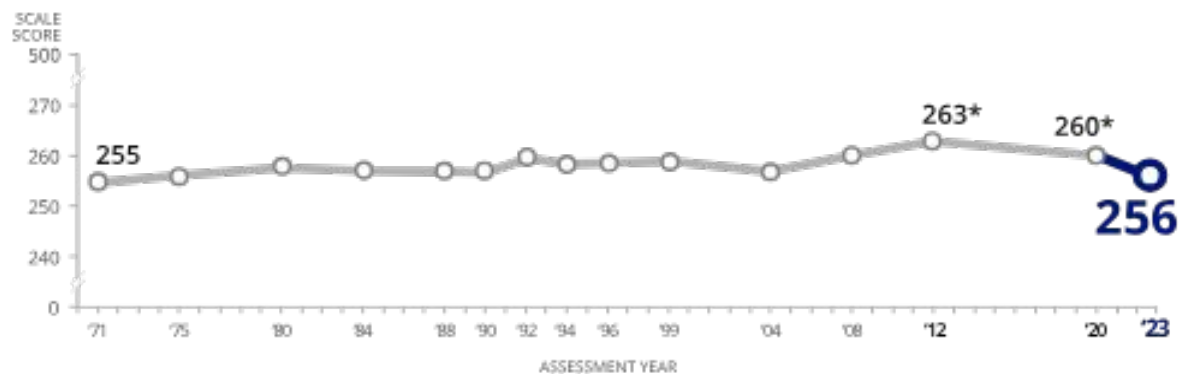
Should We Teach Technology Skills?

- Teaching, not exposure

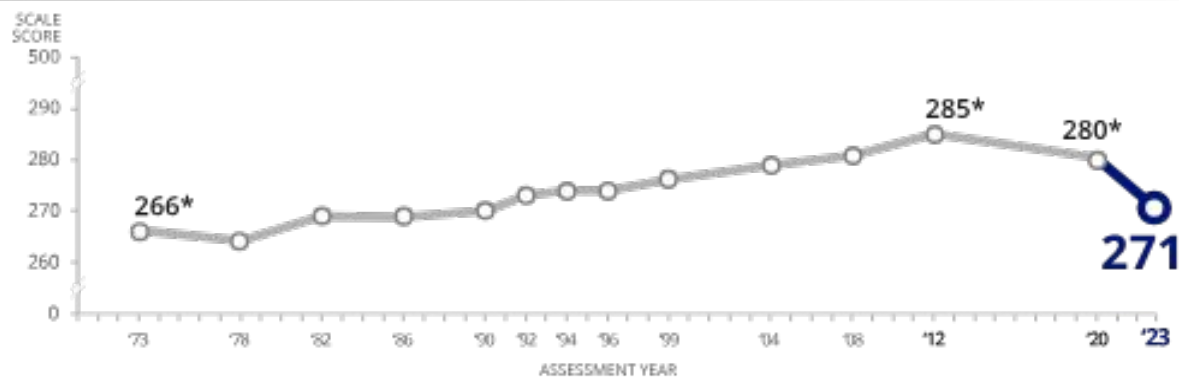
Where to From Here?

- Teaching without technology is more work
- There's no silver bullet
- Change is hard
- Wants vs needs

READING



MATHEMATICS





LCSD Facilities Planning

May 2026



Agenda

- Purpose
- Facilities
- Programs
- Assets
- Discussion



Purpose

- Strategic Plan calls for the development of a five-year facilities plan by the end of 2026-27
 - Think of this as another “Dust Off” of the Facilities Master Plan
- This plan will guide future decisions and spending
- This initial discussion will help us plan the right sequencing in order to develop this plan



Facilities

- Lake County High School
- Lake County Elementary School
- Lake County Intermediate School
- Pitts Elementary School
- Transportation Building
- Admin/Maintenance Building
- Federico Field and Track
- Other Buildings



Lake County High School

- Built in 1955; Renovated in 2014;
121,000 sqft
- Gymnasium/locker rooms;
auditorium/stage
- Starting in 2026-27 school year LCHS
will host grades 6-12





Lake County Elementary School

- Built in 2022; 64,505 sqft
- Small artificial turf soccer field; gymnasium
- Construction in 2026 converted the library into 2 classrooms
- Starting in 2026-27 school year LCHS will host grades PK-5





Lake County Intermediate School

- Built in 1976; 109,000 sqft
- Gymnasium
- Asbestos
- End-of-life systems concerns
 - HVAC, Doors, Sanitation and Water Pipes, Electrical
- Masonry issues in places
 - Repairs to the brickwork and structure near the library
- Stairs connecting the upper and lower lot were removed due to safety
- Parking lot is end-of-life
- Lake County Aquatic Center has been closed since 2020
 - PB Swims is trying to raise funds to renovate and reopen the pool
 - Direction from BOE and other government entities is needed if renovation is viewed as a viable path forward





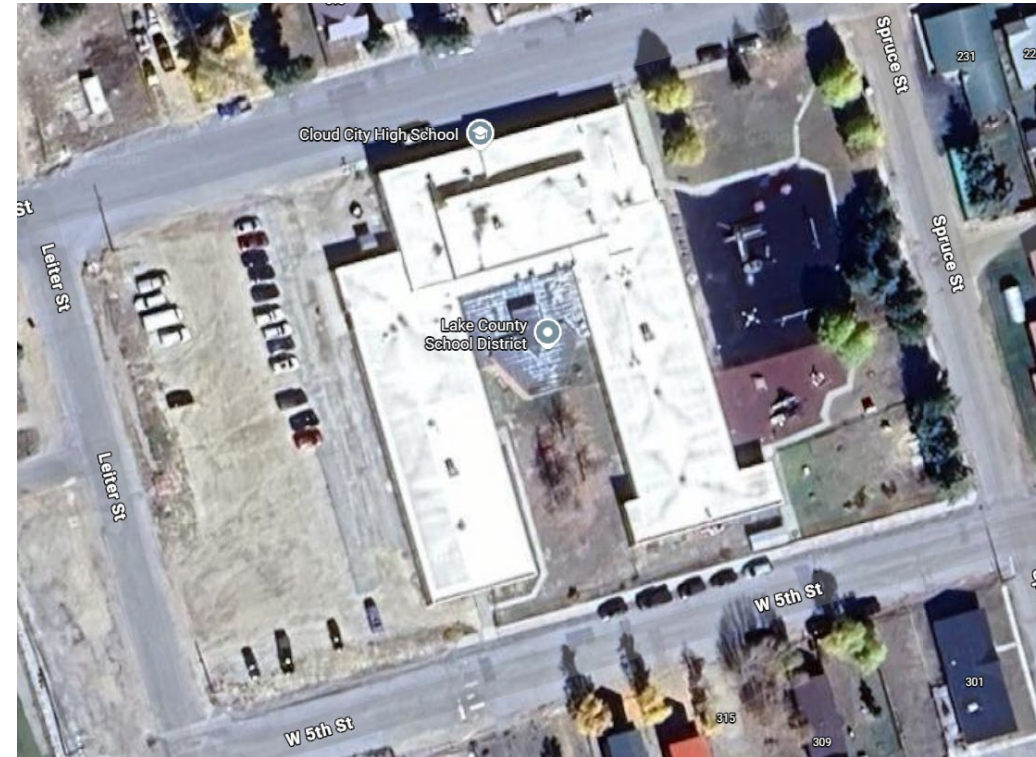
Pool Task Force / BOE Key Questions

- There are currently four entities that are a part of the Pool Task Force: Lake County, City of Leadville, Pb Swims and LCSD. The original purpose of the task force was to explore a variety of options for an affordable aquatic center.
- The Task Force is currently at a bit of a crossroads.
 - IF, as they have indicated clearly, Pb Swims will currently only consider renovating the LCIS pool as an option for an affordable aquatic center, and
 - IF such a renovation will cost \$20M-40M including addressing major infrastructure in the building, and
 - IF raising \$20-40M requires passing a bond because (1) it cannot be done grant by grant, and (2) because the Board has established that it will not consider incremental renovation, and
 - IF no entity has the bonding capacity or will to run a bond,
 - THEN what purpose does a task force that includes Pb Swims (as it should) serve?
- ...AND what does all of this mean for the Board's parameters for future conversations about the LCIS pool?



Pitts Elementary School

- Built in 1955; 34,231 sqft
- Hosts CCHS, District Offices, Bright Start, and LC Wraparound
- Asbestos, failing room heaters, roof leaks, no fire sprinklers, water is not potable
- Appraised value = \$2.1M
- Full renovation cost estimate = \$17M
- Have currently told Bright Start no change in their occupancy until end of CY2027 at the earliest





Transportation Building

- Built in 1968; 8,200 sqft
- Houses our school bus fleet, vehicle maintenance, and transportation office
- Roof leaks, not wide enough to house larger buses
- Located in a residential area





Admin/Maintenance Building

- Built in 1968; 9,000 sqft
- Houses our maintenance fleet and stores supplies
- The old District office side of the building is used only for storage
- Significant foundation and roofing issues on the south side of the building
- Located in a residential area





Federico Field and Track

- Field is in poor condition with significant prairie dog infestation
- Track is not safe for use
- Spectator stands were removed





Other Buildings

- Malta Schoolhouse
 - Built in 1902
- Twin Lakes Schoolhouse
 - Built in 1895
 - Leased to the Friends of Twin Lakes



Programs Needs

- Potential LCES Building Extension
- CCHS
- Project Dream
- Athletics
- District Office
- School Based Health Center
- Bus Parking
- Maintenance & Storage
- External Organizations



LCES Building Extension

- Proposed addition
 - 1-story structure connected to the main LCES building
 - 6 classrooms & restrooms
 - \$4-8M cost to LCSD (depending on BEST matching funds)
- With declining enrollment, will grades go to 2 Rounds?
 - Two grades near enrollment of 50





Cloud City High School

- Estimate of 15-20 students
 - Learning spaces
 - Staff
 - SEL support
 - SPED support
 - Cafeteria
 - For FY27, CCHS will be at Pitts



Project Dream

- Spaces for activities
- Gym & Outdoor Space
- Staff workspace
- Storage
- For FY27, Project Dream will be at LCIS



Athletics

- Outdoor fields
 - Soccer & Football
- Indoor & Outdoor Track & Field
- Indoor Courts
 - Basketball & Volleyball
- Current reliance on LCHS gym, LCIS gym and LCES gym to run our athletic programs



School Based Health Center

- Dental Chair & Workspace
- Office spaces at LCHS
- For FY27, SBHC will be at LCHS and will maintain operations as is at LCES



District Office

- Office Spaces
- Board Meeting Room
- Records Storage
- For FY27, the District Office will be at Pitts



Bus Parking

- Covered, Heated Spaces for 12 buses



Maintenance & Storage

- Room for 8 vehicles
 - Forklift, ATV, Loader, Trucks
- Custodial Supplies, Paper Storage, Maintenance Supplies
- Maintenance Workspace



External Organizations

- Bright Start Childcare leases spaces in Pitts but currently pays no rent or utilities
- Lake County Wraparound uses 1 room in Pitts and currently pays no rent or utilities
- Lake County Recreation uses several facilities intermittently
 - LCIS Gym
 - LCES Gym & Soccer Field
 - Some storage in the Pool
- Lake County Emergency Management can activate LCES & LCHS as an emergency shelter
- Pb Swims is seeking funding to Renovate & Reopen the Pool



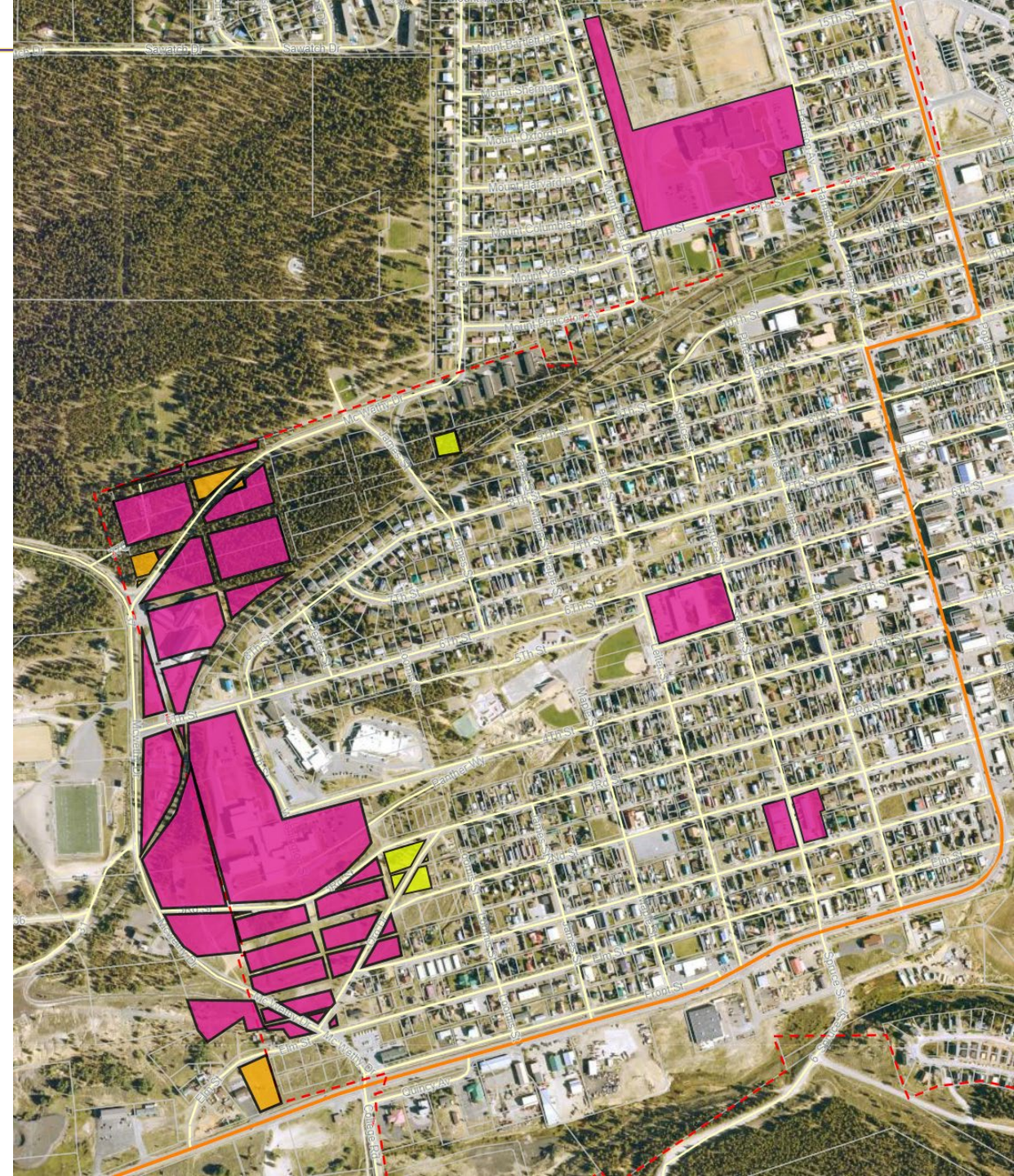
Assets to Leverage for Facilities Needs

- Sell Vacant Land (TBD) / Pitts (Max \$2M)
- Potential Bond Extension (Max \$8M)
- Potential BEST Matching (Depends)



Vacant Land

- District Land 
- Land For Sale 
- Uncertain Ownership 





Potential Bond Extension Ballot Issue

- This is not a new tax.
- Board of Education can run a No-Tax Increase Bond Extension Option
 - Can be run in any election prior to 2031 (related to expiration of 2013 bond)
 - No Increase in the Mill Levy -- Extension of the Existing Bond Mill Levies
 - May provide for a Bond of \$6-8M
 - Must list specific projects, but can also say “Included but not limited to...”
- Requires explaining to the voters why we are choosing this path
 - Basically, the "why" is that our strategy of selling assets to raise funds for capital needs simply has not worked
 - It is slow, and it is very challenging, particularly when selling vacant land
 - We had a \$950K contract in place to sell land to the county—the county backed out
 - Capital needs are not going away, need to pivot strategy
- Will require a volunteer campaign committee of some sort, though likely less intense than MLO campaign
 - Who can lead?



Potential Bond Extension: Timing Options

2026	2027	2028	Never
<p>Pros:</p> <ul style="list-style-type: none">• Likely high voter turnout• Provides certainty sooner• Provides funding sooner if successful• Takes pressure off selling assets (land, Pitts) and potentially off of Bright Start• Best timing if an LCES extension is needed (won't know until fall 2026)• Could dovetail with childcare efforts if adds certainty for Bright Start <p>Cons:</p> <ul style="list-style-type: none">• Fast timeline (now!)• Little time to plan• Requires going back to the voters and explaining why• Fatigue after multiple initiatives (staff, voters, others)--MLO, consolidation, strategic plan...	<p>Pros:</p> <ul style="list-style-type: none">• Provides certainty on a moderate timeline• Provides funding on a moderate timeline if successful• Takes pressure off selling assets (land, Pitts) and potentially off of Bright Start• More time to plan• Could dovetail with childcare efforts if adds certainty for Bright Start <p>Cons:</p> <ul style="list-style-type: none">• Likely lowest turnout (off year election)• Timeline may be difficult for Bright Start; very late for EOY2027 deadline• Timeline may be slow if an LCES extension is needed• Requires going back to the voters and explaining why	<p>Pros:</p> <ul style="list-style-type: none">• Likely high voter turnout• More time to plan <p>Cons:</p> <ul style="list-style-type: none">• Likely can't wait this long to do <i>something</i>; puts pressure on selling assets (land, Pitts) sooner• Worst timing if an LCES extension is needed• Timeline too late for Bright Start due to pressure to divest from Pitts and EOY2027 deadline• More deterioration of facilities• Requires going back to the voters and explaining why	<p>Pros:</p> <ul style="list-style-type: none">• Don't have to go back to the voters and explain why we are doing this <p>Cons:</p> <ul style="list-style-type: none">• Very unlikely to sell enough assets to meet capital needs without this funding stream• Will lead to increasing deterioration of facilities and deferred maintenance
Also on ballot: None known	Also on ballot: Childcare? other?	Also on ballot: Childcare? other?	



Potential BEST Match

- We can apply for a BEST Matching Grant for the other half of the funds required to build the LCES Extension
 - Only K-12 projects are considered
 - No standalone athletics uses, no community uses such as childcare, no standalone after-school uses
- Not guaranteed
- Legislature continually cutting allocations to BEST



Potential Construction Projects

- Build LCES Extension
- Build New Field & Track
- Build Auxiliary Gym at LCHS
- Build New Maintenance & Transportation Facility
- Renovations to LCIS and/or Pitts



Sample Questions to Explore

- General
 - What should our maintenance philosophy be?
 - Minimally keep things running (lower cost annually, systems need replacement sooner)
 - Proactively maintain (higher cost annually, but defers larger costs)
- LCES
 - Under what criteria should we proceed with building an addition?
- LCIS
 - Do we intend to use this facility long-term?
 - Should we invest in fixing known problems?
 - Tier 1 improvements priced at \$4M in 2023
 - Given infrastructure issues at LCIS, should we retain other facilities in the event of major failures there?
- Pitts
 - What are our expected uses for this facility long term?
 - How does the future use or sale of Pitts dovetail with the other facilities questions?



Sample Questions to Explore

- Capital Investment Priorities
 - What are the top 3 capital projects in the next 5 years?
 - What are we willing to defer?
 - What are BoE non-negotiables?
- Bond Extension
 - Does the BoE want to pursue a bond extension?
- Vacant Land
 - Retain for future usage or convert to funding for capital investment? (Slow)
- Risk tolerance
 - Is the board willing to run systems beyond end-of-life?
 - What level of contingency reserves does the BoE want to maintain?



Proposed Order of Operations

- 1. Short-term direction (1 month – 6/2026) needed from BOE:**
 - Participation in Pool Task Force / response to pursuit of renovation of LCIS aquatics center / intentions regarding new bond issues
 - Requirements for five-year facilities plan
 - Direction from Board regarding interest in pursuing bond extension ballot issue in 2026 or beyond (deadline for 2026: August)
- 2. Medium-term direction (6 months – 10/2026) needed from BOE:**
 - Determination of whether to pursue construction of LCES extension / BEST grant
 - Approval of location of programs for FY28 (DO, CCHS)
 - Plan to handle emergency repairs at LCIS / future uses of LCIS discussion
 - Land parcels the Board would like to list for sale, if any
- 3. Long-term direction (10 months – 2/2027) needed from BOE:**
 - Decision regarding future uses of Pitts or potential sale / touch point on Bright Start options / other community uses
- 4. Five-Year Facilities Plan complete (13 months – 6/2027)**

Lake County School District
328 West 5th Street
Leadville, Colorado 80461
www.lakecountyschools.net

AGENDA COVER MEMO

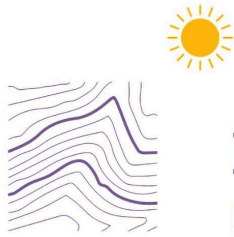
TO: Board of Education
PRESENTER(S): Kate Bartlett
MEMO PREPARED BY: Kate Bartlett
INVITED GUESTS: 0
TIME ALLOTTED ON AGENDA: 10 min
DATE OF MEETING: 5/11/2026
ATTACHMENTS: 1

RE: *Board-Superintendent Communication Norms*, Discussion

TOPIC SUMMARY

Background: The attached norms outline expectations for Board and Superintendent communication and are reviewed annually.

Topic for Presentation: Board members are invited to reflect on positive examples of communication this year and to share ideas for improvement of this document going forward.



Lake County School District

Learning Above and Beyond

Board-Superintendent Communication Norms

How the Superintendent Keeps the Board Informed

Routine Matters:

- To keep the Board abreast of district matters and to avoid surprises, a weekly message highlighting important happenings will be delivered to the entire governance team electronically (*Weekly Update*).
- All Board members have the responsibility to review the Weekly Update and to ask clarifying questions, if necessary. Observations and appreciations are always welcome but not required.

Emergencies:

- During emergencies, the superintendent will first contact the board president or vice president as soon as possible. If time allows, a follow-up message will be sent to the entire board. Alternatively, the board president or vice president will notify the rest of the board.

Heads up for issues between routine and emergency:

- Heads-up communication will be shared with the board via email or text to ensure timely awareness (*Special Update*).
- Board members are expected to review updates promptly and seek further information directly from the superintendent as needed.
- The team understands that, though the Superintendent will do their best to avoid such circumstances, occasionally social media and the press may report information about district matters before the Superintendent can notify the Board about them.

Confidentiality:

- For reasons of confidentiality, the Superintendent may share information while leaving out the names of the individuals involved.
- All legal matters requiring the strictest confidentiality will be clearly labeled and each member of the Board is expected not to discuss them with non-members of the governance team.

BOE Check Ins:

- The Superintendent and Board members strive to meet once a month outside of regular meetings and work sessions for updates. Board members may meet with the Superintendent and also the CFO, depending on topics, and may meet with the Superintendent alone or in pairs.

How Board Members Can Request Information

- If information requested is readily available, the Superintendent will provide it to all Board members within one business day.
- If an information request requires a significant amount of staff time (more than 1 hour) to produce, the Superintendent will ask all Board members if they desire it. If a majority respond in the affirmative, the Superintendent will direct staff to gather the information and distribute it to the Board as soon as it is available. The Superintendent is not required to provide information requested if a majority of the Board does not deem it necessary.
- The Superintendent is responsible for providing the team sufficient information needed to make informed decisions on action items

How the Board Handles Constituent Concerns

- When written or verbal concerns come to individual Board members, each will refer them to the Superintendent.
- An individual Board member will not venture to solve a constituent concern without the matter coming to the attention of the full Board.
- Should a concern of great significance be reported to the Superintendent, s/he will investigate, then report findings and actions taken to the entire Board.
- If a Board member becomes aware of a significant concern or issue that is not on a meeting agenda, the rest of the Board shall be made aware of the concern prior to the actual meeting. This will be done by first notifying the Superintendent and having the Superintendent notify the rest of the Board.

Who Speaks on Behalf of the District?

- Whenever inquiries related to district operations come from the media, the Superintendent, or whomever they designate, will address them.
- If a public message on behalf of the Board must be delivered, the Board President will first confer with the entire team, then deliver the agreed upon message.
- It is understood individual Board members may be approached by the media to explain their vote on matters of business. Board members are welcome to respond but are expected to support the democratically made decisions on behalf of the district no matter their individual opinions.

How We Plan for and Conduct Meetings

- The Board will discuss the next meeting agenda during Agenda Planning at the current meeting. The Superintendent and Board Secretary will collaboratively create each

meeting agenda based on the Board's input with a goal being to limit it to no more than three hours in duration.

- Individual Board members must inform the Board President of a request to place an item on a meeting agenda a minimum of six days prior to a meeting. Such items will be added at the discretion of the Board President.
- A final agenda with supporting documents will be delivered electronically to each Board member a minimum of three days prior to each meeting.
- If individual Board members have questions about an agenda item, they must notify the Board President and Superintendent by noon on the business day prior to the Board meeting, allowing the Superintendent and their staff adequate time to provide information before the meeting.
- If there are emergency agenda items the Board must address at an upcoming meeting, the Superintendent will notify the Board President of their desire to make the addition. A motion by the Board President to amend the agenda, followed by an affirmative vote by a majority of the Board, is required to add emergency items.
- Individual Board members who stand to profit personally from a decision of the Board must declare a Conflict of Interest then recuse themselves from discussing and voting on the item in question.
- After a split vote, board members will respect the outcome and support the majority's decision publicly. Disagreement will be handled with civility and professionalism, ensuring the team remains united in implementing decisions.
- Board members will not undermine board decisions but are encouraged to express their perspectives respectfully during the decision-making process.
- The board will engage in annual self-evaluation to reflect on its performance and make improvements aligned with strategic priorities. This process will include feedback from community members and district stakeholders.

**Lake County School District
328 West 5th Street
Leadville, CO 80461**

RESOLUTION NO. 26-20

WHEREAS, the Board of Education of Lake County School District has reviewed the status of Luciano Galvan and has duly considered the matter of reemployment of said teacher for the 2026-2027 school year.

NOW, THEREFORE, BE IT RESOLVED that Luciano Galvan will not be offered a contract for the 2026-2027 school year; and

BE IT FURTHER RESOLVED that the Superintendent of Schools or his/her designee is hereby directed to give timely written notice of said nonrenewal to the teacher.

Melissa Earley, Secretary

Miraim Lozano, President

Dated: May 11, 2026

Lake County School District
328 West 5th Street
Leadville, Colorado 80461
www.lakecountyschools.net

AGENDA COVER MEMO

TO: Board of Education
PRESENTER(S): Kate Bartlett
MEMO PREPARED BY: Kate Bartlett
INVITED GUESTS: 0
TIME ALLOTTED ON AGENDA: 10 min
DATE OF MEETING: 5/11/2026
ATTACHMENTS: 10

RE: *Revised Policies*, Action Item

TOPIC SUMMARY

Background: The Board is updating several policies in the context of the development of the Strategic Plan. Tonight will be the second reading and adoption of these new policies.

Topic for Presentation: Based on the Board discussion from the February 23, 2026 work session, the following revisions to the LCSD Board Policies are recommended for consideration in accordance with GP-13, Development of New Board Policy.

The Board had a first reading of these policies in April, and a second reading followed by repeal and adoption votes tonight.

The following summarizes the changes as well as staff's recommended repeal and adoption actions for Board discussion and consideration. Both redline and clean versions of all of the revised policies are attached (SP-1, GP-1, GP-7E, BSR-5, BSR-5E).

Strategic Priorities Policies

- **Repeal all current SP policies** (SP-1, SP-2, SP-3, SP-4, SP-4C1, and SP-5) in order to adopt the following policies that align with the monitoring process.
- **Adopt new SP-1, Strategic Direction**
- SP-4C-1 is changed to GP-7E to align with the GP-7E Agenda Planning policy that speaks to the annual planning cycle.
- Move the content (Mission and Core Commitments) from SP-2 to GP-1 for the following reasons:

- *Elevates Mission & Core Commitments above monitored Results Policies; Clarifies monitoring vs. belief statements; Strengthens Results-Based Governance clarity*

Governance Process Policies

- **Adopt new GP-1** to update its content to include the Foundational Direction (mission and core commitments) elements
- **Adopt new GP-7E, Oversight Calendar (used to be SP-4C-1)**, updates include:
 - Rename the policy exhibit to align with agenda planning policy (GP-7)
 - Repeal and Adopt SP policies by August 2026
 - Revise GP-1 by August 2026
 - Revise BSR-5 and Adopt BSR-5E by August 2026
 - Dec - Monitor SP-1: Pursuing Educational Excellence
 - May - Monitor SP-1: Enhancing Student Experience and Expanding Family and Community Collaboration

Board/Superintendent Relationship Policies

- **Adopt new BSR-5, Monitoring Superintendent Performance**, updates include:
 - New policy reference to Oversight Calendar (GP-7E)
 - Formal summative evaluation of Superintendent changed to June
 - Reference to new BSR-5E
 - Updated “end” to “Strategic Policy”
- **Adopt new BSR-5E, Annual Summative Evaluation of the Superintendent**, updates include:
 - SP policies updated to reflect changes made
- **Repeal BSR-5E-2, Monitoring Superintendent Performance-Interim Superintendent Evaluation Tool for 2024-25 School year**
 - No longer applicable.

TABLE OF CONTENTS

Strategic Policies ~~TRATEGIC POLICIES~~

- ~~SP-1~~ ~~Board Policy Introduction ---Repeal~~
- ~~SP-2~~ ~~Mission ---Repeal~~
- ~~SP-3~~ ~~Results-Based Governance Policy ---Repeal~~
- ~~SP-4~~ ~~Management Oversight Policy ---Repeal~~
- ~~SP-4C-1~~ ~~Management Oversight Calendar ---Repeal~~
- ~~SP-5~~ ~~District Instruction and Learning Policy ---Repeal~~
- SP-1 Strategic Direction ---New

Formatted: Centered

TABLE OF CONTENTS

Strategic Policies

SP-1 Strategic Direction

Policy Type: Strategic Policies

Strategic Direction

Policy Statement

For the period 2026–2031, the Board directs the Superintendent to implement the District’s Strategic Plan in alignment with the 2026-2031 Strategic Plan.

During this cycle, the District shall focus on the following Strategic Directions:

- Pursuing Educational Excellence
- Enhancing Student Experience
- Expanding Family and Community Collaboration

These Strategic Directions define the Board’s results expectations for the duration of the strategic planning cycle.

Accountability

The Superintendent shall present to the Board, in accordance with the Oversight Calendar, clearly defined metrics demonstrating system-level progress over time toward these outcomes. Metrics shall include measures of student academic performance, instructional coherence, workforce stability, and organizational effectiveness.

Review

This policy shall be reviewed annually in alignment with the Oversight Calendar.

[Adopted January 2018]

[Revised May 2026]

LAKE COUNTY SCHOOL DISTRICT R-1, LEADVILLE, COLORADO

TABLE OF CONTENTS

Governance Process

GP-1	Governance Commitment <u>& Foundational Direction</u>
GP-2	Governing Style
GP-3	Board Job Description
GP-4	Monitoring Board Governance Process and Board/Superintendent Relationship Policies
GP-5	President's Role
GP-6	Board Committee Principals
GP-7	Agenda Planning
<u>GP-7E</u>	<u>Agenda Planning Exhibit</u>
GP-8	Board Member's Code of Conduct
GP-9	Board Member Covenants
GP-10	Board Member Conflict of Interest
GP-11	School Board Member Financial Disclosure
GP-12	Process for Addressing Board Member Violations
GP-13	Development of New Board Policy
GP-14	Public Participation at School Board Meetings

TABLE OF CONTENTS

Governance Process

GP-1	Governance Commitment & Foundational Direction
GP-2	Governing Style
GP-3	Board Job Description
GP-4	Monitoring Board Governance Process and Board/Superintendent Relationship Policies
GP-5	President's Role
GP-6	Board Committee Principals
GP-7	Agenda Planning
GP-7E	Agenda Planning Exhibit
GP-8	Board Member's Code of Conduct
GP-9	Board Member Covenants
GP-10	Board Member Conflict of Interest
GP-11	School Board Member Financial Disclosure
GP-12	Process for Addressing Board Member Violations
GP-13	Development of New Board Policy
GP-14	Public Participation at School Board Meetings

Policy Type: Governance Process

Governance Commitment & Foundational Direction

The Board, on behalf of students, staff, parents and the community, holds itself accountable to the district by ensuring that all action it takes is consistent with the values and beliefs of the district as stated in the Board's *Mission, Core Commitments, Strategic Policies and other Board Policies*.

The Board's focus on students will always override all other considerations.

In the fulfillment of this charge, the Board is committed to continuous improvement in its capacity to define district values, articulate clear expectations for results, and ensure alignment among policy, strategy, resource allocation, and accountability.

Foundational Direction: Mission and Core Commitments

The Board adopts and affirms the following as the enduring foundation for all district work:

Mission

Lake County School District creates safe and inclusive learning environments where students belong and are empowered to develop the knowledge, skills, and character to thrive and contribute in a changing world.

Core Commitments

The Board affirms the following Core Commitments as guiding beliefs for the district:

- Equip all students to be life-long problem-solvers who persist, adapt, and grow through challenges.
- Create a culture of academic achievement.
- Build on the strengths of every individual.
- Foster a safe and supportive environment where students and staff are encouraged to engage in challenge, take risks, learn from mistakes, and grow.
- Respect the whole person: physical, mental, and emotional.
- Honor, value and include and value the diverse cultures and identities within our community.
- Partner with families and community members as active, engaged participants in our schools.

Adopted: January 2016

Revised: April 2026

LAKE COUNTY SCHOOL DISTRICT R-1, LEADVILLE, COLORADO

Agenda Planning Exhibit

Month	Policy Review / Monitoring Review = review policies for language changes, general awareness Revise = annual updates required Monitor = review actual practices against policy expectations Even Years = School years when the June date ends in an even number (e.g., SY25-26)	Statutory Approval Items	Spotlight (10 min update: Celebrations & Key focus areas)	Reports & Discussions	Activities
August				District Preparedness Overview (Supt) <i>Facilities, Transportation, Hiring, Safety</i>	
August Work Session	<u>Monitor</u> Odd Years: SSG-9 Communication & Counsel to the Board (Supt) <u>Review</u> Even Years: SSG-9 Communication & Counsel to the Board (Supt)	Ballot Language, if applicable	Facilities (CFO) Transportation (Transportation Director)		
September				District Performance (Supt) <i>State Assessments, School and District Performance Frameworks, Data Wall: BOY</i>	

Month	Policy Review / Monitoring Review = review policies for language changes, general awareness Revise = annual updates required Monitor = review actual practices against policy expectations Even Years = School years when the June date ends in an even number (e.g., SY25-26)	Statutory Approval Items	Spotlight (10 min update: Celebrations & Key focus areas)	Reports & Discussions	Activities
September Work Session	<u>Monitor/Self-Evaluation</u> Odd Years: GP-8 Board Members' Code of Conduct (BOE), GP-9 Board Member Covenants (BOE) Even Years: GP-6 Board Committee Principles (BOE), GP-5 President's Role (BOE) Review Odd Years: GP-6 Board Committee Principles (BOE), GP-5 President's Role (BOE) Even Years: GP-8 Board Members' Code of Conduct (BOE), GP-9 Board Member Covenants (BOE)	Accreditation of Schools	Safety and Security (Safety Director)		

Month	Policy Review / Monitoring Review = review policies for language changes, general awareness Revise = annual updates required Monitor = review actual practices against policy expectations Even Years = School years when the June date ends in an even number (e.g., SY25-26)	Statutory Approval Items	Spotlight (10 min update: Celebrations & Key focus areas)	Reports & Discussions	Activities
October				District Improvement Planning (Supt) UIPs	
October Work session	Monitor Odd Years: SSG-7 Financial Administration (Supt), SSG-8 Asset Protection (Supt.) Even Years: SSG-2 – Treatment of Students, Parents & Community (Supt.), SSG 3 – Staff Treatment (Supt.) Review Odd Years: SSG-2 – Treatment of Students, Parents & Community (Supt.), SSG 3 – Staff Treatment (Supt.) Even Years: SSG-7 Financial Administration (Supt), SSG-8 Asset		College and Career Readiness (School Teams)		

Month	Policy Review / Monitoring Review = review policies for language changes, general awareness Revise = annual updates required Monitor = review actual practices against policy expectations Even Years = School years when the June date ends in an even number (e.g., SY25-26)	Statutory Approval Items	Spotlight (10 min update: Celebrations & Key focus areas)	Reports & Discussions	Activities
	Protection (Supt.)				
November		Superintendent Contract, if applicable	Technology (IT Director)	Strategic Plan Review (Supt) <i>Present proposed annual goals</i> Draft Audit (CFO) Enrollment (Supt)	BOE Walk Schools
November Work session					
December	Monitor <u>Annual: SP-1, Strategic Direction 1 (Supt)</u>	Audit Certify Mill Levy / CDE Form	Athletics & Extracurricular Activities (Athletic Director)		
December Work session					

Month	Policy Review / Monitoring Review = review policies for language changes, general awareness Revise = annual updates required Monitor = review actual practices against policy expectations Even Years = School years when the June date ends in an even number (e.g., SY25-26)	Statutory Approval Items	Spotlight (10 min update: Celebrations & Key focus areas)	Reports & Discussions	Activities
January		Agenda Posting	Finance Committee	Superintendent Evaluation (BOE & Supt) Superintendent Contract discussions, if applicable (Exec Session) Revised Budget (CFO)	
January Work session	<u>Monitor/Self-Evaluation</u> Odd Years: GP-1 Governance Commitment (BOE), GP-2 Governing Style (BOE) Even Years: GP-3 Board Job Description (BOE), GP-4 Monitoring Board Governance Process & Board Supt Process (BOE) <u>Review</u>	Revised Budget	Food Service (Food Service Director)		

Month	Policy Review / Monitoring Review = review policies for language changes, general awareness Revise = annual updates required Monitor = review actual practices against policy expectations Even Years = School years when the June date ends in an even number (e.g., SY25-26)	Statutory Approval Items	Spotlight (10 min update: Celebrations & Key focus areas)	Reports & Discussions	Activities
	Odd Years: GP-3 Board Job Description (BOE), GP-4 Monitoring Board Governance Process & Board Supt Process (BOE) Even Years: GP-1 Governance Commitment (BOE), GP-2 Governing Style (BOE)				
February			Staffing, Recruitment, Retention (HR Director) District Accountability Committee	Enrollment: Choice in/out (Supt)	BOE Walk Schools
February Work session	Monitor Odd Years: SSG-1 Global Staff-Superintendent Guideline (Supt) Even Years: SSG-5 Emergency Supt			Capital Plan Overview; Master Plan (CFO) Non-Renewal Overview (Supt, CASB)	

Month	Policy Review / Monitoring Review = review policies for language changes, general awareness Revise = annual updates required Monitor = review actual practices against policy expectations Even Years = School years when the June date ends in an even number (e.g., SY25-26)	Statutory Approval Items	Spotlight (10 min update: Celebrations & Key focus areas)	Reports & Discussions	Activities
	Succession (Supt) <u>Review</u> Odd Years: SSG-5 Emergency Supt Succession (Supt) Even Years: SSG-1 Global Staff-Superintendent Guideline (Supt)			District Performance (Supt) <i>District Data Wall: MOY</i> Direction for Collective Bargaining Agreement Negotiations, if applicable (Exec Session)	
March		District Calendar	LCHS Update (Principal) CCHS Update (Principal)		
March Work session	<u>Review & Revise</u> GP-7E Management Oversight Calendar (BOE)				

Month	Policy Review / Monitoring Review = review policies for language changes, general awareness Revise = annual updates required Monitor = review actual practices against policy expectations Even Years = School years when the June date ends in an even number (e.g., SY25-26)	Statutory Approval Items	Spotlight (10 min update: Celebrations & Key focus areas)	Reports & Discussions	Activities
April			LCES Update (Principal)		
April Work session	<u>Monitor/Self-Evaluation</u> Odd Years: GP-7 Agenda Planning (BOE), GP-10 (BOE) Board Members Conflict of Interest Even Years: GP-11 (BOE) School Board Member Financial Disclosure, GP-12 (BOE) Board Member Violations <u>Review</u> Odd Years: GP-11 (BOE) School Board Member Financial Disclosure, GP-12		School Culture Overview; Diversity and Inclusion (Supt) Staff Culture Overview (Supt)		

Month	Policy Review / Monitoring Review = review policies for language changes, general awareness Revise = annual updates required Monitor = review actual practices against policy expectations Even Years = School years when the June date ends in an even number (e.g., SY25-26)	Statutory Approval Items	Spotlight (10 min update: Celebrations & Key focus areas)	Reports & Discussions	Activities
	(BOE) Board Member Violations Even Years: GP-7 Agenda Planning (BOE), GP-10 (BOE) Board Members Conflict of Interest				
May	<u>Monitor</u> Annual: SP-1, Strategic Direction 2 & 3 (Supt)			Revisit Communication Norms (BOE & Supt) Graduation Expectations (Supt and Board President) District Performance (Supt) <i>District Data Wall: EOY</i>	Post draft Budget information
May Work session	<u>Monitor/Self-Evaluation</u> Odd Years: GP-13 Development of New Board Policy (BOE) Even Years: GP-14 Public Participation at			Draft Budget (CFO) Hiring & Retention Update (HR)	

Month	Policy Review / Monitoring Review = review policies for language changes, general awareness Revise = annual updates required Monitor = review actual practices against policy expectations Even Years = School years when the June date ends in an even number (e.g., SY25-26)	Statutory Approval Items	Spotlight (10 min update: Celebrations & Key focus areas)	Reports & Discussions	Activities
	School Board Meetings (BOE) <u>Review</u> Odd Years: GP-14 Public Participation at School Board Meetings (BOE) Even Years: GP-13 Development of New Board Policy (BOE)				
June	<u>Monitor</u> Odd Years: SSG-4 Staff Compensation (Supt) Even Years: SSG-6 Budgeting (Supt) All Years: BSR-5E (Supt) <u>Review</u> Odd Years: SSG-6 Budgeting (Supt)	Budget Interest-Free Loan Program Application Ratify Collective Bargaining Agreements Superintendent Evaluation (BSR-5E)	Celebrations (Supt)	Master Plan Update (CFO)	Graduation

Month	Policy Review / Monitoring Review = review policies for language changes, general awareness Revise = annual updates required Monitor = review actual practices against policy expectations Even Years = School years when the June date ends in an even number (e.g., SY25-26)	Statutory Approval Items	Spotlight (10 min update: Celebrations & Key focus areas)	Reports & Discussions	Activities
	Even Years: SSG-4 Staff Compensation (Supt)				
June Work session					
July					
July Work session					

Adopted: January 2016
 Revised: October 2022
 Revised: November 2024
 Revised: April 2025
 Revised: April 2026
 LAKE COUNTY SCHOOL DISTRICT R-1, LEADVILLE, COLORADO

TABLE OF CONTENTS

Board/Superintendent Relationship

BSR-1	Global Governance-Management Connection
BSR-2	Unity of Control
BSR-3	Accountability of the Superintendent
BSR-4	Delegation to the Superintendent
BSR-5	Monitoring Superintendent Performance
BRS-5E	Monitoring Superintendent Performance-Exhibit
BRS-5E-2	Monitoring Superintendent Performance-Exhibit Interim Superintendent Evaluation Tool for 2024-2025 School Year

TABLE OF CONTENTS

Board/Superintendent Relationship

BSR-1	Global Governance-Management Connection
BSR-2	Unity of Control
BSR-3	Accountability of the Superintendent
BSR-4	Delegation to the Superintendent
BSR-5	Monitoring Superintendent Performance
BRS-5E	Monitoring Superintendent Performance-Exhibit

Policy Type: Board/Superintendent Relationship

Annual Summative Evaluation of the Superintendent

The Board’s Policy BSR-5 provides that:

In conjunction with the conclusion of the Board’s annual planning cycle, each June the Board will conduct a formal summative evaluation of the Superintendent. The summative evaluation will be based upon data derived during the year from monitoring Board policies on Strategic Policies and Superintendent/Staff Guideline.

The purpose of the annual evaluation of the Superintendent is to summarize the actions previously taken by the Board as it monitored *Results* and *Operational Expectations* policies during the year, and to draw conclusions on that basis.

Policy	Date Monitored	Board Disposition (Exceeded, Satisfactory, Deficient)
SP-1, Strategic Direction 1: Pursuing Educational Excellence		
SP-1, Strategic Direction 2: Enhancing Student Experience		
SP-1, Strategic Direction 3: Expanding Family and Community Collaboration		
SSG-1 Global Staff/Superintendent Guideline		
SSG-2 Treatment of Students, Parents and Community		
SSG-3 Staff Treatment		
SSG-4 Staff Compensation		

SSG-5 Emergency Superintendent Succession		
SSG-6 Budgeting		
SSG-7 Financial Administration		
SSG-8 Asset Protection		
SSG-9 Communication and Counsel to the Board		

Based upon the Board’s prior monitoring of these policies and the on-going monitoring of the district’s and the Superintendent’s performance during the preceding year, the Board reaches the following summary conclusions relative to Superintendent performance:

Following is a summary of the Superintendent's strengths and weaknesses relative to the Superintendent’s operation within the boundaries established by the **Staff/Superintendent Guidelines** policies and the Superintendent’s progress toward achieving the **Strategic Policies**:

Based upon the foregoing conclusions, the Board establishes the following priorities for the coming year:

Signed: _____
President of the Board

Date: _____

Signed: _____
Superintendent

Date: _____



The Center at Lake County Elementary School

130 West 12 St Leadville Co. 80461
719-486-6920

Head Start, Early Head Start, Universal Preschool Program, Tuition-Based Preschool, and Services for Children with Special Needs

Head Start Action Items for Governing Board

Items:

1. Incident Reporting, Child Care Licensing and the Office of Head Start Policy

There are recommended changes for the policy language to provide clarity on the purpose. The procedure outlines what types of incidents must be reported and the appropriate pathways, including an internal report to be completed. The other updates were made to match the latest information release from the Office of Head Start and the updated Colorado Childcare Rules and Regulations (Feb 2026).

2. Staff Qualifications - All roles

This outlines the required qualification outlined for Head Start and Colorado Childcare licensing across all roles in preschool. The notes in red are the updates to this with regard to our program's determined pathway and equivalency between a Child Development Credential (CDA) and a Colorado Credential Level II. This includes Pathway C which is having a current Colorado Credential Level II plus the required work experience hours and the required 120 hours within the same component areas as a CDA. The development of this pathway and equivalency supports our staff with utilizing the Colorado Credential system for Early Childhood while also addressing Head Start requirements for assistant teachers.

3. In -Kind Policy

There are no recommended changes, we are in the process of ensuring our program policies are current, up to date, and the appropriate review and approvals are occurring.



The Center at Lake County Elementary School

Lake County School District

Colorado Childcare and Head Start Incident Reporting

POLICY:

To ensure incidents affecting the health, safety, and well-being of children are promptly documented, reported, and reviewed in accordance with Colorado childcare licensing requirements and Head Start Performance standards.

Process of how to report to child care licensing when an incident/accident happens in the program. Outline of the reporting timeframe, who to report to, what is a reportable incident, and consequences of not reporting according to Head Start Performance Standards.

Colorado Childcare Licensing: **8 CCR 1402- Section 2.124**

Head Start Performance Standards: 45 CFR 1302.102 (d) and related guidance

Procedure:

Incident: Any injury, illness, unusual event, or behavior that occurs during program operations

1. Within twenty-four(24) hours, excluding weekends or holidays, the occurrence of a critical incident at the facility or within twenty- four (24) hours of a child returning to the facility the **following must be reported in writing** to Colorado Department of Early Childhood Division of Early Learning, Licensing and Administration.
 - Any fatality including the death of a child, staff member or volunteer as a result of an accident, suicide, assault, sudden unexpected infant death or any natural cause
 - Injury to a child that requires emergency medical attention or hospitalization
 - **Reportable communicable disease**
 - **Any fire that is responded to by a local fire department**
 - **Any major threats to the security of the facility**
 - **Any damage to the facility as result of severe weather**
 - **Any police or sheriff contact with the facility**
 - **Mandated reports involving program staff or volunteers**
 - **Drug or alcohol related incident involving staff that requires outside medical or emergency response**
 - **Serious harm or injury requiring professional medical attention of a child**

Revised: April 2026

2. If an incident at work isn't required to be reported, it is best practice to inform our licensing specialist. This helps if a complaint is called in. Create a letter that includes our license number, contact information, address, phone number. Provide a statement regarding occurrence.

3. Significant health and safety incidents must be reported by the Director through the Head Start Enterprise System using the Incidents tab ~~to the Head Start Program Specialist~~ as immediately as possible, but no later than 7 days after the program becomes aware of the incident, regardless of other investigations taking place. Information shared should have all Personally Identifiable Information removed. Grant recipients are required to report all significant incidents that affect the health and safety of a child that occur in a Head Start setting where services are provided (e.g., playground, program-approved transportation, learning setting, bathroom, program-approved excursion, facility parking lot), **and** involve either 1) a child who participates in a setting that receives Head Start funds **or** 2) a staff, contractor, or volunteer who participates in a setting that receives Head Start funds. Reportable incidents include:
 - Mandated reports involving program staff or volunteers
 - Suspected or known maltreatment of a child by staff, contractors, or volunteers
 - Serious harm or injury requiring professional medical attention of a child from lack of preventative maintenance
 - Serious harm, injury or endangerment of a child from lack of supervision, this includes:
 - Children with access to dangerous chemicals or toxins
 - Exposure and risk to extreme temperatures, leaving the facility alone, vehicular traffic, and risks like drowning
 - Leaving children alone with unauthorized adults
 - Lack of supervision resulting in a child's basic needs not being met
 - Knowingly failing to protect a child from maltreatment
 - Any unauthorized release of a child

4. All incidents are documented on an [Incident Report Form](#). Incident forms are uploaded and kept on the Center's google drive and are also stored in a child's file as appropriate. The following information is included:
 - Child's name and date/time of the incident (removed if sharing report in HSES)
 - Incident type and description
 - Staff and witnesses involved

- Parent/Guardian notification
 - Actions taken and follow up action needed
 - Reporting needs and completions
5. After any significant incident, the program will conduct an internal review and determine needed follow up action to systems, schedules, policies or program structure and the appropriate follow up action with staff as necessary.
 6. Other types incidents that should be reported to the Office of Head Start through the Program Specialist include:
 - Legal proceedings directly related to program operations
 - Disqualification from the Child and Adult Care and Food Program (CACFP) and license revocation
 - Closure of the center, classroom, or facility for threats, emergencies, or as a result of an event
 - Circumstances affecting the financial viability of the program
 - Breaches of personally identifiable information
 7. The Director will communicate any licensing incident reports to the building principal and the superintendent, any type of Office of Head Start incident reports will be shared with the Board President as well.
 8. Annual training will occur on Incident Reporting guidelines and upon policy revisions or updates.



The Center at Lake County Elementary School

Lake County School District

Staff Qualifications - All Roles

Lead Teacher Waivers and Assistant Teacher CDA Equivalencies

Policy: To ensure all program and teaching staff meet or exceed qualification requirements established by the Head Start Program Performance Standards and Colorado childcare licensing regulations, and to support high-quality early childhood education services.

Head Start Performance Standards: 1302.91

Colorado Childcare Licensing: 2.214-2.216

Qualification requirements:

1. The program follows the qualifications requirements for both Colorado Child Care Licensing and Head Start Performance Standards. These are as follows by position:
 - Head Start Director, serves as Education Manager - BA in Early Childhood Education or related field
 - Assistant Director, serves as program Childcare Director and Transportation Manager - AA in Early Childhood Education or related field, large center Director's License
 - Family Engagement and Community Partnerships
 - If manager - BA in related field
 - If service provider - Family Service Credential (within 18 months of hire)
 - Classroom Lead Teacher - BA or AA degree in Early Childhood Education or related field (Head Start waiver option if actively enrolled in a degree program)
 - Classroom Assistant Teacher - High School or GED and a CDA or state issued equivalent credential (within 24 months of hire)
 - Support Staff (classroom or program) - High School or GED
 - Early Head Start Home Visitor - Home Visitor CDA credential or equivalent coursework as part of an AA or BA degree
2. All positions in the program must all obtain Assistant Early Childhood Teacher or Early Childhood Teacher per Colorado Childcare guidelines within the first 18 months of hire.
3. All positions in the program must obtain and keep current a First Aid and CPR certification. The program will cover all costs and fees and will coordinate an annual training opportunity.
4. Classroom lead and assistant teachers must obtain and keep current a TS GOLD Inter-Rater Reliability certification. Lead Teachers must obtain within the first 3 months of hire, assistant teachers must obtain within the first 12 months of hire.
5. All positions are encouraged to also obtain and maintain a Colorado Early Childhood Professional Credential through the Colorado Professional Development Information System (PDIS).

Procedures:

1. The application process through the Lake County School District includes information regarding a prospective employee's education levels and obtained qualifications. Education degree, credentials, and certifications are included on the job description for each position and are posted with the position opening through the Lake County School District.
2. Candidates share information regarding their education levels with the application process and these are reviewed when screening applications for employment. If hiring occurs outside of the necessary qualifications, the prospective employee is informed of the needed qualifications and the timeline in which this must be obtained at the time of the position offer.

Resources: [PDIS Credential Pathway Information](#)

Revised April 2026

3. The Director and the employee create a Professional Development plan that is focused on obtaining all necessary qualifications and certifications for the position within the stated timeline. This is reviewed on an ongoing basis and includes needed support for completion.
4. The program may have the opportunity to provide assistance to employees with tuition, costs and fees. This opportunity includes a specified work agreement and timeline as part of the financial support provided.
5. The Center utilizes a wage scale that supports increases in hourly wages specific credential and degree obtainment.
6. The program maintains personnel files for all Center staff to include degrees and transcripts (if applicable), credentials, certificate, and ongoing training certificates and records. Each staff member must have an annual 15 hours of training in the areas of:
 - a. Child growth and development, and learning
 - b. Child observation and assessment
 - c. Family and community partnerships
 - d. Social-emotional health and development
 - e. Health, Safety and nutrition
 - f. Professional practices or
 - g. Teaching Practices
7. The program tracks staff qualifications and expiring credentials or certificates. Expiring credentials or certifications will be included on an employee's professional goal or development plan for renewal.
8. Failure to meet qualification requirements within established timelines may result in reassignment or removal of classroom duties in accordance with program and district policy.

Head Start Lead Teacher Waivers

1. The program makes every effort to hire teachers with the necessary qualifications. The Center may hire a teacher in a Lead Teacher position without an Associate Degree in Early Childhood Education if the following factors apply:
 - The candidate has a current CDA or Colorado Credential Equivalent (see below)
 - The candidate is enrolled in a degree program at an accredited college or university
 - The candidate will complete their degree program within a 3 year timeline
2. The Center must apply for a waiver through the Office of Head Start through the Head Start Enterprise System for a Lead Teacher that meets that guidelines stated above. This is through the correspondence tab and must include "Lead Teacher Waiver" in the subject line.
3. To submit for a Lead Teacher waiver, the program must submit the following documents along with the waiver request:
 - A letter requesting waiver - address challenges with hiring within qualifications and rationale for waiver request
 - Current professional development plan
 - Degree and Graduation Plan to be completed within the 3 year timeframe
 - Evidence of current enrollment (grade report, course enrollment, transcripts)

Assistant Teacher CDA and Colorado Credential Equivalency

1. Staff may qualify for an assistant teacher through one of the following pathways.
 - Pathway A - CDA Credential: current valid CDA credential
 - Pathway B - CDA Enrollment
 - Active enrollment in a CDA program to be completed within 24 months of hire
 - Pathway C - Colorado Early Childhood Credential Level II Competency Alignment
 - Current Colorado Credential Level II, 480+ hours of work experience hours and an education review for content alignment of 120 training hours in the following CDA content areas: Child Growth and Development, Learning Environment and

Resources: [PDIS Credential Pathway Information](#)

Revised April 2026

Curriculum, Health, Safety and Nutrition, Family and Community Partnerships, and Professionalism

- The CDA Equivalency Form is utilized to track this pathway.
- The following will count toward the 120 training hour requirement: 12 ECE credit hours or 120 hours of verified training (see CDA Equivalency form)
- Colorado Early Childhood Credential Levels III, IV, V, and VI are considered a higher level of qualification than a CDA due to the requirements needed to obtain these levels and therefore meet the assistant teacher qualification requirement.

Policy Council Approval: 5/4/2026

The Center

Early Childhood Programs
Lake County School District R-1

NON-FEDERAL SHARE
IN-KIND
2025-2026 Program Year

In-kind donations are documented throughout the year. Matching contributions meet the following criteria:

- ❖ Are documented
- ❖ Are not used as match for any other Federal funds
- ❖ Are necessary and reasonable for Head Start operations
- ❖ Are allowable as a cost

The Management staff is responsible for facilitating the process of obtaining and calculating all in-kind. The process is as follows:

- ❖ Employees who receive the donation are responsible to have the in-kind form completed. Teachers have in-kind forms in each classroom.
- ❖ In-kind is separated into the following categories – Donated items and time, meetings, and classroom in-kind.
- ❖ In-kind contributions of time from parents is calculated to the nearest ¼ hour. The time is multiplied by \$21.87. This amount equals the minimum wage for a Head Start teacher (\$18.00), plus fringe benefits (21.5%).
- ❖ School Board, Policy Council, and professional rates are calculated at \$30 per hour. This rate based on executive level decision making responsibilities was determined by previous Policy Councils and is being updated due to rising market rates.
- ❖ When times and rates are calculated, they are then recorded onto the monthly in-kind sheet. This amount is later added to the Y.T.D. in-kind form.
- ❖ Any agency or individual who donates to the Head Start program completes a form and signs their name. Individual volunteer hours are tracked on Excel. Reports can be calculated by day, month, community involvement, male involvement etc.
- ❖ Lake County School District employees who are providing in-kind services to Head Start complete a monthly personnel activity report. At year end,

the Business Manager reviews and approves all personnel in-kind from the District.

Monthly and Y.T.D in-kind reports are calculated by the Business Manager and given to the Accountant. Totals are monitored to ensure the program receives adequate non-federal share.

Approved by Policy Council 5/4/26

Approved by governing board xx.xx.xx

Bidding Procedures

All contractual services and purchases of supplies, materials and equipment in the amount of \$25,000 or more except professional services, will be put to bid. This does not apply, however, to contracts for instructional services or materials. Other purchases may be made in the open market but will, when possible, be based on competitive quotations or prices.

Competitive selection

All contracts and all open market orders will be awarded to the lowest responsible qualified supplier, taking into consideration the quality of materials (services) desired and their contribution to program goals.

The district reserves the right to reject any or all bids and to accept that bid which appears to be in the best interest of the district.

Response receipt and opening

All bids must be submitted to the district designee following the RFP (Request for Proposal) process. Bids may be opened in public by appropriate district officials or employees at the time specified, and all bidders shall be invited to be present.

Awarding a bid

The bidder to whom an award is made will be required to submit to the district proof of liability insurance and when appropriate, proof of workers' compensation insurance, and may be required to enter into a written contract with the district. Any written contract will include a provision requiring a criminal background check for any person providing direct services to students under the contract, including but not limited to transportation, instruction or food services as required by law. The contracting entity shall be responsible for any costs associated with the background check.

Requirements for Written Contract

Any contract must include a provision that states that any of the district's obligations for the construction and design of public works projects that are payable after the current fiscal year are contingent on money to pay the obligations being appropriated, budgeted, and otherwise made available to the district, subject to the requirements of C.R.S. 24-91-103.6.

Any written contract shall not include any of the below conditions or terms. If any of the below conditions are included in a written contract, that condition or term is considered null and void.

- Any requirement that the district hold harmless another person or entity;
- Any requirement that the district or contracting entity participate in binding arbitration or other extra-judicial process for dispute resolution;
- Any requirement that the district agree to limit liability of another person or entity

- for bodily injury, death, or property damage;
- Any waiver, alteration, or limitation of the application of the “Student Data Transparency and Security Act” or the “Colorado Privacy Act”;
 - Any conflict with Colorado law or associated rules under state statute.

LEGAL REFS.: C.R.S. 22-1-135 (terms and conditions in public school contracts definitions)
C.R.S. 22-32-109 (1)(b) (board required to adopt bidding procedures)

C.R.S. 22-32-109 (1)(b) (*Board required to adopt bidding procedures*)
C.R.S. 22-32-109.7 (*board duties regarding the employment of personnel*)
C.R.S. 22-32-122 (4) (*background check provision required in service contracts*)
C.R.S. 24-18-201 (*public official’s interest in contract*)

CROSS REFS.:

Board policy:

SSG-8, Asset Protection

Administrative policy:

DJB, Federal Procurement

Adopted: Prior to 2017
Revised: February 2017
Revised: September 2020
Revised: July 2023
Revised: May 2026
Lake County School District, Leadville, Colorado

ACCOUNT REFERENCE SHEET BY OBJECT

01's	All salaries
02's	Health, dental, life, vision insurances, PERA and Medicare benefits
03's	Legal, audit and consulting services
04's	Disposal, snow removal and repairs and maintenance services
05's	Student transportation, all insurances, telephone, postage, advertising, printing and binding, tuition, and travel and registration
06's	General supplies, natural gas and heating expenses, fuel, food, books and periodicals
07's	Equipment
08's	Dues and fees, interest and indirect costs, reserves
52-58	Transfers, allocations and leases

Expenditure Summary

MONTHLY BUDGET STATUS REPORT

Lake County School District R1

Report Description: BUDGET STATUS(Copy)

Account Year: 26

Account Periods: 09 - 09

Dates: 03/01/2026 - 03/31/2026

Account Account Description	Original Budget	Adjusted Budget	YTD Encumbrance	Period Expended	YTD Expended	Available Balance	Percent
10 GENERAL FUND							
01 SALARIES	\$8,495,599.00	\$8,279,288.00	\$0.00	\$654,712.41	\$5,754,079.23	\$2,525,208.77	69.50
02 BENEFITS	\$3,306,581.00	\$3,282,396.00	\$0.00	\$258,649.89	\$2,118,665.20	\$1,163,730.80	64.55
03 PROF/TECH SERVICES	\$793,723.00	\$879,272.00	\$65,158.82	\$41,577.40	\$537,365.79	\$276,747.39	68.53
04 PURCHASED SERVICES	\$198,300.00	\$213,300.00	\$310.39	\$12,162.06	\$170,651.16	\$42,338.45	80.15
05 OTHER SERVICES	\$1,035,455.00	\$900,258.00	\$500.00	\$46,474.87	\$644,538.82	\$255,219.18	71.65
06 SUPPLIES	\$875,647.00	\$916,154.00	\$35,634.25	\$61,860.33	\$663,935.45	\$216,584.30	76.36
07 EQUIPMENT	\$9,300.00	\$10,300.00	\$0.00	\$0.00	\$15,540.29	-\$5,240.29	150.88
08 OTHER OBJECTS	\$2,665,292.00	\$2,945,975.00	\$0.00	\$1,119.61	\$55,396.85	\$2,890,578.15	1.88
09 OTHER USES OF FUNDS	\$0.00	\$35,023.00	\$0.00	\$0.00	\$0.00	\$35,023.00	0.00
10 GENERAL FUND	\$17,379,897.00	\$17,461,966.00	\$101,603.46	\$1,076,556.57	\$9,960,172.79	\$7,400,189.75	57.62
19 COLO. PRESCHOOL PROGRAM							
01 SALARIES	\$268,732.00	\$219,806.00	\$0.00	\$19,048.28	\$142,401.41	\$77,404.59	64.79
02 BENEFITS	\$101,540.00	\$80,345.00	\$0.00	\$7,272.23	\$54,365.15	\$25,979.85	67.66
03 PROF/TECH SERVICES	\$3,000.00	\$3,000.00	\$0.00	\$132.34	\$1,700.62	\$1,299.38	56.69
04 PURCHASED SERVICES	\$9,901.00	\$7,500.00	\$0.00	\$1,168.87	\$4,455.83	\$3,044.17	59.41
05 OTHER SERVICES	\$200.00	\$200.00	\$0.00	\$32.06	\$54.74	\$145.26	27.37
06 SUPPLIES	\$11,627.00	\$21,149.00	\$980.61	\$813.03	\$2,269.34	\$17,899.05	15.37
19 COLO. PRESCHOOL PROGRAM	\$395,000.00	\$332,000.00	\$980.61	\$28,466.81	\$205,247.09	\$125,772.30	62.12
21 FOOD SERVICE FUND							
01 SALARIES	\$420,100.00	\$442,641.00	\$0.00	\$36,292.72	\$308,091.53	\$134,549.47	69.60
02 BENEFITS	\$168,276.00	\$173,532.00	\$0.00	\$15,388.80	\$129,096.28	\$44,435.72	74.39
05 OTHER SERVICES	\$1,800.00	\$3,000.00	\$45.00	\$33.82	\$2,145.64	\$809.36	73.02
06 SUPPLIES	\$414,000.00	\$423,148.00	\$0.00	\$33,898.37	\$272,366.96	\$150,781.04	64.37
08 OTHER OBJECTS	\$25,000.00	\$30,270.00	\$0.00	\$0.00	\$0.00	\$30,270.00	0.00
21 FOOD SERVICE FUND	\$1,029,176.00	\$1,072,591.00	\$45.00	\$85,613.71	\$711,700.41	\$360,845.59	66.36
22 DESIGNATED PURPOSE GRANTS							
01 SALARIES	\$824,109.00	\$875,609.00	\$0.00	\$65,832.67	\$593,353.45	\$282,255.55	67.76
02 BENEFITS	\$309,919.00	\$304,209.00	\$0.00	\$23,324.66	\$208,797.62	\$95,411.38	68.64
03 PROF/TECH SERVICES	\$163,119.00	\$392,077.00	\$114,372.00	\$27,235.50	\$173,042.41	\$104,662.59	73.31
04 PURCHASED SERVICES	\$4,000.00	\$4,000.00	\$0.00	\$0.00	\$0.00	\$4,000.00	0.00
05 OTHER SERVICES	\$41,586.00	\$42,828.00	\$0.00	\$1,173.66	\$12,120.85	\$30,707.15	28.30
06 SUPPLIES	\$70,828.00	\$112,983.00	\$4,892.15	\$2,699.24	\$86,116.01	\$21,974.84	80.55
07 EQUIPMENT	\$14,400.00	\$22,040.00	\$0.00	\$0.00	\$0.00	\$22,040.00	0.00
08 OTHER OBJECTS	\$0.00	\$17,776.00	\$93.52	\$0.00	\$0.00	\$17,682.48	0.53
22 DESIGNATED PURPOSE GRANTS	\$1,427,961.00	\$1,771,522.00	\$119,357.67	\$120,265.73	\$1,073,430.34	\$578,733.99	67.33

Expenditure Summary

MONTHLY BUDGET STATUS REPORT

Lake County School District R1

Report Description: BUDGET STATUS(Copy)

Account Year: 26

Account Periods: 09 - 09

Dates: 03/01/2026 - 03/31/2026

Account Account Description	Original Budget	Adjusted Budget	YTD Encumbrance	Period Expended	YTD Expended	Available Balance	Percent
23 ATHLETIC/ACTIVITY FUND							
08 OTHER OBJECTS	\$615,590.00	\$649,392.00	\$0.00	\$0.00	\$0.00	\$649,392.00	0.00
23 ATHLETIC/ACTIVITY FUND	\$615,590.00	\$649,392.00	\$0.00	\$0.00	\$0.00	\$649,392.00	0.00
26 THE CENTER - CHILD CARE							
01 SALARIES	\$183,741.00	\$188,868.00	\$0.00	\$18,472.77	\$117,166.96	\$71,701.04	62.04
02 BENEFITS	\$68,765.00	\$68,765.00	\$0.00	\$7,117.91	\$45,133.61	\$23,631.39	65.63
03 PROF/TECH SERVICES	\$3,000.00	\$3,000.00	\$0.00	\$105.87	\$1,360.48	\$1,639.52	45.35
05 OTHER SERVICES	\$0.00	\$10,500.00	\$0.00	\$0.00	\$0.00	\$10,500.00	0.00
06 SUPPLIES	\$42,000.00	\$25,000.00	\$763.40	\$1,266.27	\$10,713.04	\$13,523.56	45.91
08 OTHER OBJECTS	\$149,445.00	\$330,494.00	\$0.00	\$454.43	\$3,807.38	\$326,686.62	1.15
26 THE CENTER - CHILD CARE	\$446,951.00	\$626,627.00	\$763.40	\$27,417.25	\$178,181.47	\$447,682.13	28.56
27 HEAD START PROGRAM							
01 SALARIES	\$468,438.00	\$468,438.00	\$0.00	\$32,796.53	\$319,274.87	\$149,163.13	68.16
02 BENEFITS	\$172,907.00	\$172,907.00	\$0.00	\$12,753.46	\$126,031.61	\$46,875.39	72.89
03 PROF/TECH SERVICES	\$85,385.00	\$85,385.00	\$0.00	\$790.18	\$34,402.18	\$50,982.82	40.29
05 OTHER SERVICES	\$6,550.00	\$6,550.00	\$0.00	\$483.97	\$6,440.73	\$109.27	98.33
06 SUPPLIES	\$29,140.00	\$36,640.00	\$3,241.07	\$7,318.96	\$44,758.87	-\$11,359.94	131.00
08 OTHER OBJECTS	\$192,105.00	\$192,105.00	\$0.00	\$0.00	\$305.19	\$191,799.81	0.16
27 HEAD START PROGRAM	\$954,525.00	\$962,025.00	\$3,241.07	\$54,143.10	\$531,213.45	\$427,570.48	55.56
31 BOND REDEMPTION FUND							
08 OTHER OBJECTS	\$3,663,055.00	\$4,164,356.00	\$0.00	\$0.00	\$244,877.74	\$3,919,478.26	5.88
09 OTHER USES OF FUNDS	\$1,204,291.00	\$1,204,291.00	\$0.00	\$0.00	\$1,204,290.94	\$0.06	100.00
31 BOND REDEMPTION FUND	\$4,867,346.00	\$5,368,647.00	\$0.00	\$0.00	\$1,449,168.68	\$3,919,478.32	26.99
43 CAPITAL PROJECTS FUND							
03 PROF/TECH SERVICES	\$0.00	\$48,000.00	\$0.00	\$0.00	\$0.00	\$48,000.00	0.00
07 EQUIPMENT	\$526,000.00	\$1,984,578.00	\$179,763.63	\$141,006.88	\$672,402.37	\$1,132,412.00	42.94
08 OTHER OBJECTS	\$544,631.00	\$641,841.00	\$0.00	\$0.00	\$0.00	\$641,841.00	0.00
43 CAPITAL PROJECTS FUND	\$1,070,631.00	\$2,674,419.00	\$179,763.63	\$141,006.88	\$672,402.37	\$1,822,253.00	31.86
64 HEALTH INSURANCE RESERVE							
05 OTHER SERVICES	\$2,364,073.00	\$2,074,779.00	\$0.00	\$196,689.87	\$1,497,020.48	\$577,758.52	72.15
08 OTHER OBJECTS	\$37,589.00	\$371,365.00	\$0.00	\$0.00	\$0.00	\$371,365.00	0.00
64 HEALTH INSURANCE RESERVE	\$2,401,662.00	\$2,446,144.00	\$0.00	\$196,689.87	\$1,497,020.48	\$949,123.52	61.20

Report Description: BUDGET STATUS(Copy)

Account Year: 26

Account Periods: 09 - 09

Dates: 03/01/2026 - 03/31/2026

FJEXS06A

(build 26.3.5.1)

Selection Criteria

Account Year	26
Account Period Range	09 - 09
Accounts	All Accounts
Report ID	39708
Report Title	MONTHLY BUDGET STATUS REPORT
Report Description	BUDGET STATUS(Copy)
Role ID	ADMIN

Report Specification Sort / Totals

FUND	Sequence: 1	Heading: Y	Total: Y	Page Break: N
OBJECT 1	Sequence: 2	Heading: N	Total: Y	Page Break: N

Display Options

Show Zero Accounts	No
Summary/Detail	Summary

Report Specification Selection Ranges

FUND	10 - 64
------	---------

FINANCIAL REPORT AS OF 3/31/26

GENERAL FUND 10															
EXPENDITURES						BUDGET			REVENUE						
TOTAL ALLOCATION	TABOR	UNALLOCATED/ OTHER RESERVES	% UNALLOCATED	BUDGETED EXPENDITURE	YTD ACTIVITY	BALANCE	%	BUDGET AMOUNT	BFB	BUDGETED REVENUE	MONTHLY REVENUE RECEIVED	YTD REVENUE	% RECEIVED		
Jul-2025	\$ 17,379,897.00	\$ 373,000.00	\$ 2,251,492.00	13.0%	\$ 14,755,405.00	\$ 505,228.65	14,250,176.35	3.42%	Jul-2025	\$ 17,379,897.00	\$ 2,917,400.00	\$ 14,462,497.00	\$ 35,510.91	\$ 35,510.91	0.25%
Aug-2025	\$ 17,386,897.00	\$ 373,000.00	\$ 2,251,492.00	12.9%	\$ 14,762,405.00	\$ 1,847,574.69	\$ 12,914,830.31	12.52%	Aug-2025	\$ 17,386,897.00	\$ 2,917,400.00	\$ 14,469,497.00	\$ 168,169.84	\$ 203,680.75	1.41%
Sep-2025	\$ 17,386,897.00	\$ 373,000.00	\$ 2,251,492.00	12.9%	\$ 14,762,405.00	\$ 3,298,319.19	\$ 11,464,085.81	22.34%	Sep-2025	\$ 17,386,897.00	\$ 2,917,400.00	\$ 14,469,497.00	\$ 271,026.07	\$ 474,706.82	3.28%
Oct-2025	\$ 17,386,897.00	\$ 373,000.00	\$ 2,251,492.00	12.9%	\$ 14,762,405.00	\$ 4,461,644.64	\$ 10,300,760.36	30.22%	Oct-2025	\$ 17,386,897.00	\$ 2,917,400.00	\$ 14,469,497.00	\$ 867,606.91	\$ 1,342,313.73	9.29%
Nov-2025	\$ 17,386,897.00	\$ 373,000.00	\$ 2,251,492.00	12.9%	\$ 14,762,405.00	\$ 5,546,244.56	\$ 9,216,160.44	37.57%	Nov-2025	\$ 17,386,897.00	\$ 2,917,400.00	\$ 14,469,497.00	\$ 252,597.56	\$ 1,594,921.29	11.02%
Dec-2025	\$ 17,386,897.00	\$ 373,000.00	\$ 2,251,492.00	12.9%	\$ 14,762,405.00	\$ 6,691,721.99	\$ 8,080,683.01	45.26%	Dec-2025	\$ 17,386,897.00	\$ 2,917,400.00	\$ 14,462,497.00	\$ 370,636.95	\$ 1,965,457.24	13.59%
Jan-2026	\$ 17,461,966.00	\$ 491,024.00	\$ 2,176,271.00	12.5%	\$ 14,794,671.00	\$ 7,854,651.82	\$ 6,940,019.18	53.09%	Jan-2026	\$ 17,461,966.00	\$ 3,614,207.00	\$ 13,847,759.00	\$ 191,751.52	\$ 2,157,208.76	15.58%
Feb-2026	\$ 17,461,966.00	\$ 491,024.00	\$ 2,176,271.00	12.5%	\$ 14,794,671.00	\$ 8,983,842.57	\$ 5,810,828.43	60.72%	Feb-2026	\$ 17,461,966.00	\$ 3,614,207.00	\$ 13,847,759.00	\$ 309,116.69	\$ 2,466,325.45	17.81%
Mar-2026	\$ 17,461,966.00	\$ 491,024.00	\$ 2,176,271.00	12.5%	\$ 14,794,671.00	\$ 10,061,776.25	\$ 4,732,894.75	68.01%	Mar-2026	\$ 17,461,966.00	\$ 3,614,207.00	\$ 13,847,759.00	\$ 2,367,352.75	\$ 4,833,678.20	34.91%
Apr-2026									Apr-2026						
May-2026									May-2026						
Jun-2026									Jun-2026						
(1,703,544.36)															
CPP/UPK FUND 19															
EXPENDITURES						BUDGET			REVENUE						
TOTAL ALLOCATION	TABOR	UNALLOCATED	% UNALLOCATED	BUDGETED EXPENDITURE	YTD ACTIVITY	BALANCE	%	BUDGET AMOUNT	BFB	BUDGETED REVENUE	MONTHLY REVENUE RECEIVED	YTD REVENUE	%		
Jul-2025	\$ 395,000.00			\$ 395,000.00	\$ 2,912.20	\$ 392,087.80	0.74%	Jul-2025	\$ 395,000.00	\$ -	\$ 395,000.00	\$ -	\$ -	0.00%	
Aug-2025	\$ 395,000.00			\$ 395,000.00	\$ 38,565.36	\$ 356,434.64	9.76%	Aug-2025	\$ 395,000.00	\$ -	\$ 395,000.00	\$ -	\$ -	0.00%	
Sep-2025	\$ 395,000.00			\$ 395,000.00	\$ 73,960.67	\$ 321,039.33	18.72%	Sep-2025	\$ 395,000.00	\$ -	\$ 395,000.00	\$ 31,084.55	\$ 31,084.55	7.87%	
Oct-2025	\$ 395,000.00			\$ 395,000.00	\$ 111,862.10	\$ 283,137.90	28.32%	Oct-2025	\$ 395,000.00	\$ -	\$ 395,000.00	\$ 69,904.55	\$ 69,909.10	16.71%	
Nov-2025	\$ 395,000.00			\$ 395,000.00	\$ 142,192.93	\$ 252,807.07	36.00%	Nov-2025	\$ 395,000.00	\$ -	\$ 395,000.00	\$ 34,271.51	\$ 100,260.61	25.38%	
Dec-2025	\$ 395,000.00			\$ 395,000.00	\$ 169,351.61	\$ 225,648.39	42.87%	Dec-2025	\$ 395,000.00	\$ -	\$ 395,000.00	\$ 43,570.55	\$ 143,831.16	36.41%	
Jan-2026	\$ 332,000.00			\$ 332,000.00	\$ 149,925.17	\$ 182,074.83	45.16%	Jan-2026	\$ 332,000.00	\$ -	\$ 332,000.00	\$ 30,385.92	\$ 174,217.08	52.48%	
Feb-2026	\$ 332,000.00			\$ 332,000.00	\$ 178,196.31	\$ 153,803.69	53.67%	Feb-2026	\$ 332,000.00	\$ -	\$ 332,000.00	\$ 48,285.74	\$ 222,502.82	67.02%	
Mar-2026	\$ 332,000.00			\$ 332,000.00	\$ 206,227.10	\$ 125,772.90	62.12%	Mar-2026	\$ 332,000.00	\$ -	\$ 332,000.00	\$ 44,400.15	\$ 266,902.97	80.39%	
Apr-2026								Apr-2026							
May-2026								May-2026							
Jun-2026								Jun-2026							
FOOD SERVICE FUND 21															
EXPENDITURES						BUDGET			REVENUE						
TOTAL ALLOCATION	TABOR	UNALLOCATED	% UNALLOCATED	BUDGETED EXPENDITURE	YTD ACTIVITY	BALANCE	%	BUDGET AMOUNT	BFB	BUDGETED REVENUE	MONTHLY REVENUE RECEIVED	YTD REVENUE	%		
Jul-2025	\$ 1,029,176.00			\$ 1,029,176.00	\$ 25,691.54	\$ 1,003,484.46	2.50%	Jul-2025	\$ 1,029,176.00	\$ -	\$ 1,029,176.00	\$ 25,806.38	\$ 25,806.38	2.51%	
Aug-2025	\$ 1,029,176.00			\$ 1,029,176.00	\$ 82,816.00	\$ 946,359.40	8.05%	Aug-2025	\$ 1,029,176.00	\$ -	\$ 1,029,176.00	\$ 30,132.18	\$ 55,938.56	5.44%	
Sep-2025	\$ 1,029,176.00			\$ 1,029,176.00	\$ 187,690.43	\$ 841,465.57	18.24%	Sep-2025	\$ 1,029,176.00	\$ -	\$ 1,029,176.00	\$ 46,542.41	\$ 102,480.97	9.96%	
Oct-2025	\$ 1,029,176.00			\$ 1,029,176.00	\$ 292,233.84	\$ 736,942.16	28.39%	Oct-2025	\$ 1,029,176.00	\$ -	\$ 1,029,176.00	\$ 72,617.27	\$ 175,098.24	17.01%	
Nov-2025	\$ 1,029,176.00			\$ 1,029,176.00	\$ 365,111.92	\$ 661,060.08	35.77%	Nov-2025	\$ 1,029,176.00	\$ -	\$ 1,029,176.00	\$ 96,456.35	\$ 271,556.59	26.39%	
Dec-2025	\$ 1,029,176.00			\$ 1,029,176.00	\$ 456,703.21	\$ 572,472.79	44.38%	Dec-2025	\$ 1,029,176.00	\$ -	\$ 1,029,176.00	\$ 106,032.35	\$ 377,608.94	36.69%	
Jan-2026	\$ 1,072,591.00			\$ 1,072,591.00	\$ 548,813.37	\$ 523,777.63	50.79%	Jan-2026	\$ 1,072,591.00	\$ 49,297.00	\$ 1,023,294.00	\$ 91,588.33	\$ 469,197.27	45.85%	
Feb-2026	\$ 1,072,591.00			\$ 1,072,591.00	\$ 626,131.70	\$ 446,459.30	58.38%	Feb-2026	\$ 1,072,591.00	\$ 49,297.00	\$ 1,023,294.00	\$ 78,895.28	\$ 548,092.55	53.56%	
Mar-2026	\$ 1,072,591.00			\$ 1,072,591.00	\$ 711,745.41	\$ 360,845.59	66.36%	Mar-2026	\$ 1,072,591.00	\$ 49,297.00	\$ 1,023,294.00	\$ 147,624.00	\$ 695,716.55	67.99%	
Apr-2026								Apr-2026							
May-2026								May-2026							
Jun-2026								Jun-2026							
GRANT FUND 22															
EXPENDITURES						BUDGET			REVENUE						
TOTAL ALLOCATION	TABOR	UNALLOCATED	% UNALLOCATED	BUDGETED EXPENDITURE	YTD ACTIVITY	BALANCE	%	BUDGET AMOUNT	BFB	BUDGETED REVENUE	MONTHLY REVENUE RECEIVED	YTD REVENUE	%		
Jul-2025	\$ 1,427,961.00			\$ 1,427,961.00	\$ 32,455.13	\$ 1,395,505.87	2.27%	Jul-2025	\$ 1,427,961.00	\$ -	\$ 1,427,961.00	\$ 4,500.00	\$ 4,500.00	0.32%	
Aug-2025	\$ 1,511,133.00			\$ 1,511,133.00	\$ 370,703.15	\$ 1,140,429.85	24.53%	Aug-2025	\$ 1,511,133.00	\$ -	\$ 1,511,133.00	\$ 385,734.64	\$ 390,234.64	25.82%	
Sep-2025	\$ 1,511,133.00			\$ 1,511,133.00	\$ 457,800.64	\$ 1,053,332.36	30.30%	Sep-2025	\$ 1,511,133.00	\$ -	\$ 1,511,133.00	\$ 208,554.15	\$ 598,788.79	39.63%	
Oct-2025	\$ 1,511,133.00			\$ 1,511,133.00	\$ 575,367.27	\$ 935,765.73	38.08%	Oct-2025	\$ 1,511,133.00	\$ -	\$ 1,511,133.00	\$ 71,005.92	\$ 669,794.71	44.32%	
Nov-2025	\$ 1,511,133.00			\$ 1,511,133.00	\$ 689,921.73	\$ 821,211.27	45.66%	Nov-2025	\$ 1,511,133.00	\$ -	\$ 1,511,133.00	\$ 106,293.02	\$ 776,087.71	51.36%	
Dec-2025	\$ 1,511,133.00			\$ 1,511,133.00	\$ 840,910.54	\$ 670,222.46	55.65%	Dec-2025	\$ 1,511,133.00	\$ -	\$ 1,511,133.00	\$ 47,100.13	\$ 823,187.84	54.47%	
Jan-2026	\$ 1,770,097.00			\$ 1,770,097.00	\$ 938,159.47	\$ 831,937.53	53.00%	Jan-2026	\$ 1,770,097.00	\$ -	\$ 1,770,097.00	\$ 208,814.30	\$ 1,030,002.14	58.19%	
Feb-2026	\$ 1,771,522.00			\$ 1,771,522.00	\$ 1,093,425.11	\$ 678,096.89	61.72%	Feb-2026	\$ 1,771,522.00	\$ -	\$ 1,771,522.00	\$ 74,489.41	\$ 1,104,491.55	62.35%	
Mar-2026	\$ 1,771,522.00			\$ 1,771,522.00	\$ 1,192,788.01	\$ 578,733.99	67.33%	Mar-2026	\$ 1,771,522.00	\$ -	\$ 1,771,522.00	\$ 118,108.49	\$ 1,222,600.04	69.01%	
Apr-2026								Apr-2026							
May-2026								May-2026							
Jun-2026								Jun-2026							
CENTER FUND 26															
EXPENDITURES						BUDGET			REVENUE						
TOTAL ALLOCATION	TABOR	UNALLOCATED	% UNALLOCATED	BUDGETED EXPENDITURE	YTD ACTIVITY	BALANCE	%	BUDGET AMOUNT	BFB	BUDGETED REVENUE	MONTHLY REVENUE RECEIVED	YTD REVENUE	%		
Jul-2025	\$ 446,951.00			\$ 446,951.00	\$ 1,388.85	\$ 445,562.15	0.31%	Jul-2025	\$ 446,951.00	\$ 110,000.00	\$ 336,951.00	\$ -	\$ -	0.00%	
Aug-2025	\$ 446,951.00			\$ 446,951.00	\$ 18,403.89	\$ 428,547.11	4.12%	Aug-2025	\$ 446,951.00	\$ 110,000.00	\$ 336,951.00	\$ -	\$ -	0.00%	
Sep-2025	\$ 446,951.00			\$ 446,951.00	\$ 35,962.76	\$ 410,988.24	8.05%	Sep-2025	\$ 446,951.00	\$ 110,000.00	\$ 336,951.00	\$ 13,804.70	\$ 13,804.70	4.10%	
Oct-2025	\$ 446,951.00			\$ 446,951.00	\$ 53,609.89	\$ 391,341.11	12.44%	Oct-2025	\$ 446,951.00	\$ 110,000.00	\$ 336,951.00	\$ 8,718.97	\$ 22,523.67	6.88%	
Nov-2025	\$ 446,951.00			\$ 446,951.00	\$ 80,969.42	\$ 365,981.58	18.12%	Nov-2025	\$ 446,951.00	\$ 110,000.00	\$ 336,951.00	\$ 12,764.70	\$ 35,288.37	10.47%	
Dec-2025	\$ 446,951.00			\$ 446,951.00	\$ 102,952.65	\$ 343,998.35	23.03%	Dec-2025	\$ 446,951.00	\$ 110,000.00	\$ 336,951.00	\$ 9,141.40	\$ 44,429.77	13.19%	
Jan-2026	\$ 626,627.00			\$ 626,627.00	\$ 124,282.55	\$ 502,344.45	19.83%	Jan-2026	\$ 626,627.00	\$ 461,000.00	\$ 165,627.00	\$ 54,102.60	\$ 98,532.37	59.49%	
Feb-2026	\$ 626,627.00			\$ 626,627.00	\$ 151,708.24	\$ 474,918.76	24.21%	Feb-2026	\$ 626,627.00	\$ 461,000.00	\$ 165,627.00	\$ 12,894.40	\$ 111,228.77	67.15%	
Mar-2026	\$ 626,627.00			\$ 626,627.00	\$ 178,944.87	\$ 447,682.13	28.56%	Mar-2026	\$ 626,627.00	\$ 461,000.00	\$ 165,627.00	\$ 16,582.29	\$ 127,809.06	77.17%	
Apr-2026								Apr-2026							
May-2026								May-2026							
Jun-2026								Jun-2026							
HEADSTART FUND 27															
EXPENDITURES						BUDGET			REVENUE						
TOTAL ALLOCATION	TABOR	UNALLOCATED	% UNALLOCATED	BUDGETED EXPENDITURE	YTD ACTIVITY	BALANCE	%	BUDGET AMOUNT	BFB	BUDGETED REVENUE	MONTHLY REVENUE RECEIVED	YTD REVENUE	%		
Jul-2025	\$ 954,525.00			\$ 954,525.00	\$ 10,176.85	\$ 944,348.15	1.07%	Jul-2025	\$ 954,525.00	\$ -	\$ 954,525.00	\$ -	\$ -	0.00%	
Aug-2025	\$ 954,525.00			\$ 954,525.00	\$ 62,420.69	\$ 892,104.31	6.54%	Aug-2025	\$ 954,525.00	\$ -	\$ 954,525.00	\$ 44,785.00	\$ 44,765.00	4.69%	
Sep-2025	\$ 954,525.00			\$ 954,525.00	\$ 119,4										

Lake County Intermediate School					
LCIS Activity Fund 8299	July	\$ 76,996.39	\$ 70.00	\$ 3.27	\$ 76,929.66
	August	\$ 76,929.66	\$ 495.92	\$ 3.26	\$ 76,437.00
	September	\$ 76,437.00	\$ 491.73	\$ 1,927.02	\$ 77,872.29
	October	\$ 77,872.29	\$ 5,583.90	\$ 3,309.35	\$ 75,597.74
	November	\$ 75,597.74	\$ 1,451.49	\$ 1,997.01	\$ 76,143.26
	December	\$ 76,143.26	\$ 3,506.74	\$ 2,997.64	\$ 75,634.16
	January	\$ 75,634.16	\$ 2,328.31	\$ 266.20	\$ 73,572.05
	February	\$ 73,572.05	\$ 1,561.55	\$ 2.78	\$ 72,013.28
	March	\$ 72,013.28	\$ 260.50	\$ 3.05	\$ 71,755.83
	April		\$ -	\$ -	\$ -
	May		\$ -	\$ -	\$ -
	June		\$ -	\$ -	\$ -
Lake County High School					
LCHS Activity Fund 2102	July	\$ 155,906.11	\$ 9,712.07	\$ 381.36	\$ 146,575.40
	August	\$ 146,575.40	\$ 339.37	\$ 7,483.30	\$ 153,719.33
	September	\$ 153,719.33	\$ 3,541.44	\$ 13,096.73	\$ 163,274.62
	October	\$ 163,274.62	\$ 3,411.21	\$ 8,667.84	\$ 168,531.25
	November	\$ 168,531.25	\$ 1,145.68	\$ 3,028.97	\$ 170,414.54
	December	\$ 170,414.54	\$ 10,405.38	\$ 5,390.26	\$ 165,399.42
	January	\$ 165,399.42	\$ 6,400.44	\$ 6.94	\$ 159,005.92
	February	\$ 159,005.92	\$ 8,438.87	\$ 16,805.93	\$ 167,372.98
	March	\$ 167,372.98	\$ 7,627.99	\$ 12,038.14	\$ 171,783.13
	April		\$ -	\$ -	\$ -
	May		\$ -	\$ -	\$ -
	June		\$ -	\$ -	\$ -
Lake County Athletics					
LCSD Athletic Activity Fund 2591636986	July	\$ 125,645.33	\$ 1,522.32	\$ 1,568.32	\$ 125,691.33
	August	\$ 125,691.33	\$ -	\$ 5.34	\$ 125,696.67
	September	\$ 125,696.67	\$ 2,536.79	\$ 12,031.37	\$ 135,191.25
	October	\$ 135,191.25	\$ 1,228.12	\$ 794.91	\$ 134,758.04
	November	\$ 134,758.04	\$ 1,252.64	\$ 6,779.48	\$ 140,284.88
	December	\$ 140,284.88	\$ 1,463.99	\$ 1,059.60	\$ 139,880.49
	January	\$ 139,880.49	\$ 417.58	\$ 4,925.91	\$ 144,388.82
	February	\$ 144,388.82	\$ 585.44	\$ 5,896.31	\$ 149,699.69
	March	\$ 149,699.69	\$ 1,784.32	\$ 5,195.06	\$ 153,110.43
	April		\$ -	\$ -	\$ -
	May		\$ -	\$ -	\$ -
	June		\$ -	\$ -	\$ -
Cloud City High School					
CCHS 2578400962	July	\$ 10,115.60	\$ 296.84	\$ 0.43	\$ 9,819.19
	August	\$ 9,819.19	\$ -	\$ 20.41	\$ 9,839.60
	September	\$ 9,839.60	\$ -	\$ 500.41	\$ 10,340.01
	October	\$ 10,340.01	\$ 25.38	\$ 485.43	\$ 10,800.06
	November	\$ 10,800.06	\$ 466.28	\$ 69.93	\$ 10,403.71
	December	\$ 10,403.71	\$ 329.52	\$ 0.44	\$ 10,074.63
	January	\$ 10,074.63	\$ 416.53	\$ 0.42	\$ 9,658.52
	February	\$ 9,658.52	\$ 868.70	\$ 3,015.64	\$ 11,805.46
	March	\$ 11,805.46	\$ 2,476.76	\$ 1,403.77	\$ 10,732.47
	April		\$ -	\$ -	\$ -
	May		\$ -	\$ -	\$ -
	June		\$ -	\$ -	\$ -



CONSOLIDATED BILLING CONTROL ACCOUNT STATEMENT

Prepared For	LAKE COUNTY SCHOOL RENA SANCHEZ
Account Number	
Statement Closing Date	04/03/26
Days in Billing Cycle	31
Next Statement Date	05/03/26

For Customer Service Call:
800-231-5511

Inquiries or Questions:
SBCS-Account Servicing Team
PO Box 40310
Mesa, AZ 85274

Credit Line	\$50,000
Available Credit	\$42,387

Payments:
Payment Remittance Center PO Box 77066
Minneapolis, MN 55480-7766

Payment Information

New Balance	\$6,904.51
Current Payment Due (Minimum Payment)	\$500.00
Current Payment Due Date	04/28/26

Thank you for using our Automatic Payment service. See the **Important Information** section below for your next scheduled payment.

If you wish to pay off your balance in full: The balance noted on your statement is not the payoff amount. Please call 800-231-5511 for payoff information.

Account Summary

Previous Balance		\$8,890.31
Credits	-	\$217.40
Payments	-	\$8,867.91
Purchases & Other Charges	+	\$7,099.51
Cash Advances	+	\$0.00
Finance Charges	+	\$0.00
New Balance	=	\$6,904.51

Wells Fargo Business Card Elite Rewards

Rewards ID:	06241203
Previous Balance	515,503
Points Earned this Month	6,882
Points From Other Company Cards	0
Bonus Points Earned	0
Adjustments	0
Redeemed	0
Total Available	= 522,385

Rewards Notice

Check your point balance and redeem your points at wellsfargo.com/businessrewards. You can also call our Rewards Service Center at 1-800-213-3365.

See reverse side for important information.

5596 0017 YTG 1 7 2 260403 0 PAGE 1 of 6 10 8914 9900 ELAC 01DR5596 38080

DETACH HERE

Detach and mail with check payable to "Wells Fargo" to arrive by Current Payment Due Date.

Make checks payable to: Wells Fargo

Account Number	
New Balance	\$6,904.51
Total Amount Due (Minimum Payment)	\$500.00
Current Payment Due Date	04/28/26

Amount Enclosed: \$

PAYMENT REMITTANCE CENTER YTG 816
 PO BOX 77066
 MINNEAPOLIS MN 55480-7766

LAKE COUNTY SCHOOL
 RENA SANCHEZ
 328 W 5TH ST
 LEADVILLE CO 80461-3547

38080
Q302



Rate Information

Your rate may vary according to the terms of your agreement.

TYPE OF BALANCE	ANNUAL INTEREST RATE	DAILY FINANCE CHARGE RATE	AVERAGE DAILY BALANCE	PERIODIC FINANCE CHARGES	TRANSACTION FINANCE CHARGES	TOTAL FINANCE CHARGES
PURCHASES	14.740%	.04038%	\$0.00	\$0.00	\$0.00	\$0.00
CASH ADVANCES	25.490%	.06983%	\$0.00	\$0.00	\$0.00	\$0.00
TOTAL				\$0.00	\$0.00	\$0.00

Important Information

\$0 - \$6,904.51 WILL BE DEDUCTED FROM YOUR ACCOUNT AND CREDITED AS YOUR AUTOMATIC PAYMENT ON 04/28/26. THE AUTOMATIC PAYMENT AMOUNT WILL BE REDUCED BY ALL PAYMENTS POSTED ON OR BEFORE THIS DATE.

Summary of Sub Account Usage

Name	Sub Account Number Ending In	Monthly Spending Cap	Spend This Period
FREDERICK HALL		5,000	\$0.00
BRANDI LOVELY		5,000	\$68.55
MICHAEL ADLER		5,000	\$554.18
TANYA LENHARD		5,000	\$369.23
JAMES MULCEY		5,000	\$0.00
SEAN FAY		5,000	\$57.00
KATHARINE BARTLETT		5,000	\$21.66
BUNNY TAYLOR		10,000	\$362.90
SCOTT CARROLL		5,000	\$1,621.81
KATHERINE KERRIGAN		5,000	\$660.75
TIMOTHY POWELL		5,000	\$108.80
AMY PETERS		6,000	\$2,464.68
KATHLEEN FITZSIMMONS		5,000	\$169.00
RENA SANCHEZ		10,000	\$175.00
CHERYL TALBOT		5,000	\$248.55

Transaction Details

The transactions detailed on this Consolidated Billing Control Account Statement contain transactions made directly to this Control Account plus all transactions made on Sub Accounts. If there were no transactions made by a Sub Account that Sub Account will not appear.

Trans Post	Reference Number	Description	Credits	Charges
03/27	03/27 F891400F600CHGDDA	AUTOMATIC PAYMENT - THANK YOU TOTAL 5569399005214091 \$8,867.91-	8,867.91	

Transaction Summary For **BRANDI LOVELY**
Sub Account Number Ending In

03/03	03/04 5531020EFB9S0J52W	CHIPOTLE 3192 DENVER CO		25.97
03/17	03/17 5526352EXKX7E3WHQ	SAFEWAY #2824 LEADVILLE CO		21.29
03/30	03/30 5526352FALB4DDN1X	SAFEWAY #2824 LEADVILLE CO		21.29
		TOTAL \$68.55		
BRANDI LOVELY / Sub Acct Ending In				

Transaction Summary For **MICHAEL ADLER**
Sub Account Number Ending In

03/04	03/04 8702130EGEHM5HXEY	FH* DOWNTOWN AQUARIUM DENVER CO		82.68
03/20	03/20 8702130F0EHN2ZLFJ	FH* DOWNTOWN AQUARIUM DENVER CO		
03/27	03/27 0543684F68PLXH5X1	VSI*TOS REC CENTER SILVERTHORNE CO	13.00	
03/27	03/27 2524780F704SBB1PB	BRECKENRIDGE REC DEPT BRECKENRIDGE CO		175.00
		TOTAL \$554.18		309.50
MICHAEL ADLER / Sub Acct Ending In				

Transaction Summary For **TANYA LENHARD**
Sub Account Number Ending In

03/03	03/04 5520739EFEV68MW9J	BOUNDLESSAT.COM LAKE OSWEGO OR		54.32
03/17	03/17 5548872EX3DENBDNT	CO GOVT SERVICES DENVER CO		31.44
03/19	03/19 1230202EY01HDWRES	ADOBE SAN JOSE CA		29.99

Transaction Details

Trans	Post	Reference Number	Description	Credits	Charges
04/01	04/01	5543687FQ3TXXP22R	PLAK SMAKER ALGONQUIN IL		43.48
04/02	04/02	5543286FQ5V2Z23GG	AMERICAN RED CROSS WASHINGTON DC		168.00
04/02	04/02	5543286FQ5V2Z23H9	AMERICAN RED CROSS WASHINGTON DC		42.00
			TOTAL \$369.23		
			TANYA LENHARD / Sub Acct Ending In		

Transaction Summary For **SEAN FAY**
Sub Account Number Ending In

03/05	03/05	0531461EH00QHMX6S	HIGH MOUNTAIN PIES LEADVILLE CO		57.00
			TOTAL \$57.00		
			SEAN FAY / Sub Acct Ending In		

Transaction Summary For **KATHARINE BARTLETT**
Sub Account Number Ending In

03/12	03/12	1230202EP00F1ENPF	FACEBK *KKW2YGDJJ2 WILMINGTON DE		1.67
03/21	03/21	1230202F000R1K6GZ	ADOBE SAN JOSE CA		19.99
			TOTAL \$21.66		
			KATHARINE BARTLETT / Sub Acct Ending In		

Transaction Summary For **BUNNY TAYLOR**
Sub Account Number Ending In

03/16	03/16	7545491EVS66QNLL5	COLUMBINE INN LEADVILLE CO FOLIO #xxxxxxxx		109.00
03/23	03/23	8230509F2EHNVP01A	ZOOM.COM 888-799-9666 SAN JOSE CA		169.90
04/02	04/02	5543286FQ5V2Z23G8	AMERICAN RED CROSS WASHINGTON DC		84.00
			TOTAL \$362.90		
			BUNNY TAYLOR / Sub Acct Ending In		

Transaction Summary For **SCOTT CARROLL**
Sub Account Number Ending In

03/03	03/04	0230537EF00KJKHR4	USPS PO 0755080403 LEADVILLE CO		6.08
03/05	03/05	0531461EH00QHMXET	HIGH MOUNTAIN PIES LEADVILLE CO		112.70
03/17	03/17	0531461EX00D7Y9W2	HIGH MOUNTAIN PIES LEADVILLE CO		222.00
03/18	03/18	0531461EY00DDSS9J	HIGH MOUNTAIN PIES LEADVILLE CO		222.00
03/19	03/19	5543286EY5ZKN52P2	SQ *FREIGHT LEADVILLE CO		500.00
03/20	03/20	0230537F000LX0644	USPS PO 0755080403 LEADVILLE CO		36.48
03/24	03/24	5526352F4L4P4FFDK	SAFEWAY #2824 LEADVILLE CO		65.60
03/26	03/26	0531461F600DZY8R7	HIGH MOUNTAIN PIES LEADVILLE CO		456.95
			TOTAL \$1,621.81		
			SCOTT CARROLL / Sub Acct Ending In		

Transaction Summary For **KATHERINE KERRIGAN**
Sub Account Number Ending In

03/04	03/04	5270715EG09G4EHK6	THE HOME DEPOT #1546 BOULDER CO		29.17
03/04	03/04	5754024EFMMH53FRD	EB *ANNUAL COLORADO AE 8014137200 CA		40.00
03/06	03/06	5270487EJBBKSKZ9T	PIZZA HUT 034984 MONTE VISTA CO		119.00
03/11	03/11	0558745EN0000NR80	RBT PIZZA HUT 034984 EASYSAVINGS NY	4.76	
03/13	03/13	5543286ER5XTJDAPZ	AMERICAN RED CROSS WASHINGTON DC		294.00
03/16	03/16	5526352EWKW5MKBBY	SAFEWAY #2824 LEADVILLE CO		25.00
03/18	03/18	5526352EYKY9VJ4FK	SAFEWAY #2824 LEADVILLE CO		52.34
03/26	03/26	0531461F600DZY8S9	HIGH MOUNTAIN PIES LEADVILLE CO		106.00
			TOTAL \$660.75		
			KATHERINE KERRIGAN / Sub Acct Ending In		

Transaction Summary For **TIMOTHY POWELL**
Sub Account Number Ending In

03/25	03/25	8211755F4EHMRZKKL	EASYKEYS.COM CHARLOTTE NC		20.08
04/02	04/02	5543286FQ5SW8H95L	GE APPLIANCES LOUISVILLE KY		88.72
			TOTAL \$108.80		
			TIMOTHY POWELL / Sub Acct Ending In		

Transaction Summary For **AMY PETERS**
Sub Account Number Ending In

02/07	03/04	5543687F94Z37B5SB	EMBASSY SUITES DENVER CO FOLIO #981281	195.00	
03/02	03/04	7534551EFS66HAPNV	YMCA SNOW MOUNTAIN LOD GRANBY CO FOLIO #R01957		900.50
03/03	03/04	5543286EE5SFMMPKS	AIRBNB * HMNYKQZXYC SAN FRANCISCO CA		1,041.91
03/14	03/14	5550036ETKTBOA57S	WALMART.COM WALMART.COM AR		198.13
03/17	03/17	5543286EW5Z0BA5YD	AMAZON MKTPL*B52W66GW2 SEATTLE WA		75.76
03/20	03/20	5531020EZBJVDWPDWF	BSN SPORTS LLC FARMERS BRANC TX		167.74
03/25	03/25	0522702F5EHX36BHN	VSATHLETICSCOM TORRANCE CA		135.35
03/25	03/25	5265384F4LV6A3JM2	MFAC, LLC 4019429363 RI		71.94
03/25	03/25	5265384F4LX2AL5TM	MFAC, LLC 4019429363 RI	4.64	
03/26	03/26	8517927F6LQ5BWVAF	BIG HORN ACE HARDWARE LEADVILLE CO		12.99
03/29	03/29	5544641F84XX82GQP	RIBBONS GALORE ROSEVILLE CA		60.00
			TOTAL \$2,464.68		
			AMY PETERS / Sub Acct Ending In		



Transaction Details

Trans	Post	Reference Number	Description	Credits	Charges
-------	------	------------------	-------------	---------	---------

Transaction Summary For **KATHLEEN FITZSIMMONS**
Sub Account Number Ending In

03/04	03/04	5545885EG2037GGKY	CBI ONLINE DENVER CO		6.00
03/04	03/04	5545885EG2037GGLE	CBI ONLINE DENVER CO		6.00
03/04	03/04	5545885EG2037GGM8	CBI ONLINE DENVER CO		6.00
03/05	03/05	5545885EH2070L8AA	CBI ONLINE DENVER CO		6.00
03/05	03/05	5545885EH2070L8BB	CBI ONLINE DENVER CO		6.00
03/05	03/05	5545885EH2070L8FR	CBI ONLINE DENVER CO		6.00
03/05	03/05	5543286EG5V5MK2J9	IN *AMERICAN BIOIDENTI DENVER CO		6.00
03/16	03/16	5545885EW21QH9WA4	CBI ONLINE DENVER CO		115.00
03/16	03/16	5545885EW21QH9W82	CBI ONLINE DENVER CO		6.00
03/18	03/18	5545885EY21L984LH	CBI ONLINE DENVER CO		6.00
TOTAL				\$169.00	6.00

KATHLEEN FITZSIMMONS / Sub Acct Ending In

Transaction Summary For **RENA SANCHEZ**
Sub Account Number Ending In

03/04	03/04	2524780EF00PN6Q5T	NTLREST SERVS SAFE CHICAGO IL		45.00
03/05	03/05	5550036EGKFB1EFNM	STATEFOODSAFETYCOM ORLANDO FL		130.00
TOTAL				\$175.00	130.00

RENA SANCHEZ / Sub Acct Ending In

Transaction Summary For **CHERYL TALBOT**
Sub Account Number Ending In

03/26	03/26	0543684F58PL0AGAX	PY *SOULED OUT T-SHIRT BUENA VISTA CO		106.93
03/26	03/26	8271116F6EHMBF6GE	WWW.SPEECHMUSINGS.COM PAYSON UT		38.00
03/27	03/27	5550036F6L74RWWEF	WALMART.COM WALMART.COM AR		39.95
04/02	04/02	5550036FQLDD4WMK0	WALMART.COM WALMART.COM AR		63.67
TOTAL				\$248.55	63.67

CHERYL TALBOT / Sub Acct Ending In

0-1-0

YTG

Vendor Detail

Batch Year: 26

Batch Range: 000001 - 009999

Check Date Range: 03/01/2026 - 03/31/2026

Vendor Name	Check	Check Date	Vendor Invoice	PO	Description	Account	Amount
401 (K) VOL. INVESTMENT PLAN			175				
	0102756878	03/26/2026	03-26-2026_3		3/401K	6-10-000-00-0000-7477-000-000000	5,199.43
	Total Check: 0102756878						\$5,199.43
Total Vendor: 175							\$5,199.43
ACORN PETROLEUM, INC.			270				
	0100105426	03/04/2026	CL25846		2/1-2/15 / FUEL BUS 2 50%	6-22-100-00-2100-0510-000-008287	53.40
	0100105426	03/04/2026	CL25846		2/1-2/15 / FUEL BUS 2 50%	6-22-101-01-2100-0510-000-007287	53.40
	0100105426	03/04/2026	CL25846		2/1-2/15 / FUEL	6-10-720-27-2700-0626-000-000000	2,168.96
	0100105426	03/04/2026	CL25846		2/1-2/15 / FUEL	6-10-710-26-2600-0626-000-000000	174.30
	0100105426	03/04/2026	CL26164		2/15-2/28 / FUEL BUS 2 50%	6-22-100-00-2100-0510-000-008287	43.27
	0100105426	03/04/2026	CL26164		2/15-2/28 / FUEL	6-10-710-26-2600-0626-000-000000	289.37
	0100105426	03/04/2026	CL26164		2/15-2/28 / FUEL	6-10-720-27-2700-0626-000-000000	1,873.74
	0100105426	03/04/2026	CL26164		2/15-2/28 / FUEL EARLY PAY DISCOUNT	6-10-720-27-2700-0626-000-000000	-13.30
	0100105426	03/04/2026	CL26164		2/15-2/28 / FUEL BUS 2 50%	6-22-101-01-2100-0510-000-007287	43.27
	Total Check: 0100105426						\$4,686.41
	0100105472	03/25/2026	CL26483		3/1-3/15 FUEL	6-10-710-26-2600-0626-000-000000	129.85
	0100105472	03/25/2026	CL26483		3/1-3/15 FUEL	6-10-720-27-2700-0626-000-000000	1,239.61
	0100105472	03/25/2026	CL26483		EARLY PAY DISCOUNT	6-10-720-27-2700-0626-000-000000	-4.18
	0100105472	03/25/2026	CL26483		3/1-3/15 FUEL	6-22-101-01-2100-0510-000-007287	54.94
	0100105472	03/25/2026	CL26483		3/1-3/15 FUEL	6-22-100-00-2100-0510-000-008287	54.94
	Total Check: 0100105472						\$1,475.16
	0100105523	03/31/2026	0040256-IN		FUEL BUS 23	6-10-720-27-2700-0626-000-000000	178.04
	Total Check: 0100105523						\$178.04
Total Vendor: 270							\$6,339.61
ACT			427				
	0100105427	03/04/2026	1355632		WORKKEYS	6-10-602-10-0090-0340-000-000000	135.00
	Total Check: 0100105427						\$135.00
Total Vendor: 427							\$135.00
AFSCME COUNCIL 976			257				
	0100105516	03/26/2026	26-MAR-26		PAYROLL LIABILITIES	6-21-000-00-0000-7421-000-000000	326.55
	0100105516	03/26/2026	26-MAR-26		PAYROLL LIABILITIES	6-10-000-00-0000-7421-000-000000	361.50
	Total Check: 0100105516						\$688.05
Total Vendor: 257							\$688.05
AIDEN WIGGINS			43907				
	0100105473	03/25/2026	03-25-2026_48		COOKING CLUB SUPPLY REIM	6-22-602-00-0090-0610-000-001207	32.17
	Total Check: 0100105473						\$32.17
Total Vendor: 43907							\$32.17

Vendor Detail

Batch Year: 26

Batch Range: 000001 - 009999

Check Date Range: 03/01/2026 - 03/31/2026

Vendor Name	Check	Check Date	Vendor Invoice	PO	Description	Account	Amount
AISI CERAMICS, LLC			43630				
	0100105454	03/24/2026	12569	260407	RAKU WORKSHOP- COST OF ONE DAY RAKU WORK	6-10-301-10-0200-0610-000-000000	462.00
	0100105454	03/24/2026	12569	260407	SHORT TRIP FEE- TRIP FEE FOR TRAVEL WITH	6-10-602-01-0090-0610-000-001228	800.00
Total Check: 0100105454							\$1,262.00
Total Vendor: 43630							\$1,262.00
ALAMOSA HIGH SCHOOL			214				
	0100105524	03/31/2026	03-26-2026_28		4/24 HS TRACK ENTRY FEE	6-10-301-14-1800-0584-000-000000	350.00
Total Check: 0100105524							\$350.00
Total Vendor: 214							\$350.00
AMAZON.COM			4304				
	0100105428	03/04/2026	1D3Q-N4QW-LKVW	260431	FLIPSIDE PRODUCTS DRY ERASE BOARD, MINIM	6-10-301-10-1310-0610-000-000000	136.40
	0100105428	03/04/2026	13YX-6XRD-6QJ9	260455	EXPO DRY ERASE MARKERS, LOW ODOR INK, BL	6-10-301-24-2410-0610-000-000000	159.09
	0100105428	03/04/2026	1RT9-PKJ4-Q4GC	260475	IT SUPPLY	6-43-602-00-4000-0734-000-000000	2,335.14
	0100105428	03/04/2026	1K1M-CVRK-K9JG	260444	EQUIPEMENT FOR SECURITY CAMERA OVERHAUL	6-43-602-00-4000-0734-000-000000	490.16
	0100105428	03/04/2026	1X1M-V1R9-6R13	260444	EQUIPEMENT FOR SECURITY CAMERA OVERHAUL	6-43-602-00-4000-0734-000-000000	1,298.17
	0100105428	03/04/2026	1DF9-QHT3-JJLT	260473	PLEASE SEE ONLINE ORDER #111-9873409-067	6-10-101-10-0010-0610-000-000000	70.06
	0100105428	03/04/2026	1KCF-FV6P-43TH	260468	PLEASE SEE ONLINE ORDER #111-1319601-609	6-10-101-10-0010-0640-000-000000	27.42
	0100105428	03/04/2026	19FV-NK6C-9JFJ	260471	ZOZEN MEASURING WHEEL IN METERS, FOLDABL	6-10-301-14-1890-0610-000-000000	36.99
	0100105428	03/04/2026	1WH1-XCQT-YH4G	260419	PJD SUPPLY	6-22-602-00-0090-0610-000-001207	10.48
	0100105428	03/04/2026	13DV-9YGC-Q4JQ	260419	PJD SUPPLY	6-22-602-00-0090-0610-000-001207	84.00
Total Check: 0100105428							\$4,647.91

Vendor Detail

Batch Year: 26

Batch Range: 000001 - 009999

Check Date Range: 03/01/2026 - 03/31/2026

Vendor Name	Check	Check Date	Vendor Invoice	PO	Description	Account	Amount
AMAZON.COM			4304				
	0100105455	03/24/2026	17KC-6PFV-K3MV	260400	PLEASE SEE ONLINE ORDER #111-6166075-232	6-10-101-10-0200-0610-000-000000	15.11
	0100105455	03/24/2026	1L4R-D7DJ-NXDY	260400	PLEASE SEE ONLINE ORDER #111-6166075-232	6-10-101-10-0200-0610-000-000000	45.33
	0100105455	03/24/2026	1RRM-FQWG-KVMK	260400	PLEASE SEE ONLINE ORDER #111-6166075-232	6-10-101-10-0200-0610-000-000000	207.42
	0100105455	03/24/2026	1W9G-TTLL-VTF4	260402	EHS SUPPLY	6-27-971-02-3330-0610-000-008600	136.69
	0100105455	03/24/2026	1VKL-VF34-M6K1	260402	EHS SUPPLY	6-27-971-02-3330-0610-000-008600	201.20
	0100105455	03/24/2026	1Y4H-MJP7-GXVW	260402	EHS SUPPLY	6-27-971-02-3330-0610-000-008600	980.32
	0100105455	03/24/2026	1GCV-X7JD-9FGL	260402	EHS SUPPLY	6-27-971-02-3330-0610-000-008600	12.79
	0100105455	03/24/2026	1XNJ-CVXC-44YP	260454	PLEASE SEE ONLINE ORDER #111-2260980-822	6-10-101-10-0200-0610-000-000000	169.55
	0100105455	03/24/2026	1FR4-3XWN-9QYL	260454	PLEASE SEE ONLINE ORDER #111-2260980-822	6-10-101-10-0200-0610-000-000000	564.25
	0100105455	03/24/2026	1FLK-7P1F-FGPD	260459	WINTER CLOTHES PART 3	6-10-100-10-0010-0610-000-000000	111.97
	0100105455	03/24/2026	16JJ-DJNR-4WQX	260459	WINTER CLOTHES PART 3	6-10-100-10-0010-0610-000-000000	338.86
	0100105455	03/24/2026	1LJV-CXTG-MKLJ	260461	VANGOA PIANO BENCH, ADJUSTABLE MUSIC KEY	6-10-201-10-1250-0610-000-000000	52.34
	0100105455	03/24/2026	131N-MTG3-NTHN	260462	EXPO DRY ERASE MARKERS CHISEL TIP LOW OD	6-10-201-10-0020-0610-000-000000	74.90
	0100105455	03/24/2026	1J41-7649-FTCM	260464	LOVELY REQUEST	6-10-100-10-0010-0610-000-000000	224.78
	0100105455	03/24/2026	1DF9-QHT3-LCDF	260469	PLEASE SEE ONLINE ORDER # 111-4221079-75	6-10-101-10-0200-0610-000-000000	199.43
	0100105455	03/24/2026	1MG1-JYWX-JMVW	260472	ALLIANCE WIDE FORMAT PAPER 24"X150' CAD	6-10-602-20-2290-0610-000-000000	98.96
	0100105455	03/24/2026	19QG-D4LH-R6CM	260474	PLEASE SEE ONLINE ORDER #111-8776003-596	6-10-101-10-0010-0550-000-000000	91.65
	0100105455	03/24/2026	1XCY-GP4P-QHLG	260474	PLEASE SEE ONLINE ORDER #111-8776003-596	6-10-101-10-0010-0550-000-000000	14.13
	0100105455	03/24/2026	16J1-YG6T-KC1D	260474	PLEASE SEE ONLINE ORDER #111-8776003-596	6-10-101-10-0010-0550-000-000000	7.94
	0100105455	03/24/2026	1JQQ-7NRN-TGCR	260478	PLEASE SEE ONLINE ORDER #1110601301-9954	6-10-101-10-0010-0610-000-000000	46.57
	0100105455	03/24/2026	1JQQ-7NRN-TGCR	260478		6-10-101-10-1200-0610-000-000000	40.79
	0100105455	03/24/2026	1WW4-KM6N-DLJQ	260481	PLEASE SEE ONLINE ORDER #111-2775570-471	6-10-101-10-1200-0610-000-000000	98.30
	0100105455	03/24/2026	1L9Y-41L4-6Y3H	260479	TRANSPORTATION SUPPLY	6-10-602-10-0090-0531-000-000000	16.53
	0100105455	03/24/2026	1L9Y-41L4-6Y3H	260479		6-10-720-27-2700-0610-000-000000	55.78
	0100105455	03/24/2026	1WW6-KM6N-F7DF	260482	PLEASE SEE ONLINE ORDER #111-4965318-160	6-10-101-10-0010-0610-000-000000	259.50
	0100105455	03/24/2026	1GL1-DQG9-F4LG	260483	PJD INSTRUCTIONAL SUPPLY	6-22-602-00-0090-0610-000-001207	599.87
					Total Check: 0100105455		\$4,664.96
	0100105474	03/25/2026	1DLX-X9YP-NG1D	260496	VANGOA PIANO BENCH, ADJUSTABLE MUSIC KEY	6-10-301-10-1250-0610-000-000000	49.95
	0100105474	03/25/2026	1QML-JNFK-D9K1	260495	LORD OF THE FLIES BY WILLIAM GOLDING	6-10-301-10-0030-0640-000-000000	230.65
	0100105474	03/25/2026	1LQ6-HR3J-4HTL	260487	PJD INSTRUCTIONAL SUPPLY	6-22-602-00-0090-0610-000-001207	108.35
					Total Check: 0100105474		\$388.95

Vendor Detail

Batch Year: 26

Batch Range: 000001 - 009999

Check Date Range: 03/01/2026 - 03/31/2026

Vendor Name	Check	Check Date	Vendor Invoice	PO	Description	Account	Amount
AMAZON.COM			4304				
	0100105525	03/31/2026	1VY1-L16Q-N1H1	260489	16 PACK GOLD W/PURPLE GRADUATION HONOR R	6-10-302-10-0060-0610-000-000000	107.83
	0100105525	03/31/2026	1VY1-L16Q-N1H1	260489	CHIPS AHOY CHUNKY FUDGY CHOCOLATE CHIP C	6-10-302-24-2410-0610-000-000000	22.99
						Total Check: 0100105525	\$130.82
						Total Vendor: 4304	\$9,832.64
AMERICAN FIDELITY ASSURANCE			3685				
	0100105517	03/26/2026	26-MAR-26		PAYROLL LIABILITIES	6-27-000-00-0000-7421-000-000000	250.88
	0100105517	03/26/2026	26-MAR-26		PAYROLL LIABILITIES	6-19-000-00-0000-7421-000-000000	169.02
	0100105517	03/26/2026	26-MAR-26		PAYROLL LIABILITIES	6-21-000-00-0000-7421-000-000000	71.22
	0100105517	03/26/2026	26-MAR-26		PAYROLL LIABILITIES	6-22-000-00-0000-7421-000-000000	48.27
	0100105517	03/26/2026	26-MAR-26		PAYROLL LIABILITIES	6-10-000-00-0000-7421-000-000000	4,078.42
	0100105517	03/26/2026	26-MAR-26		PAYROLL LIABILITIES	6-22-000-00-0000-7421-000-000000	99.96
	0100105517	03/26/2026	26-MAR-26		PAYROLL LIABILITIES	6-26-000-00-0000-7421-000-000000	167.10
	0100105517	03/26/2026	26-MAR-26		PAYROLL LIABILITIES	6-21-000-00-0000-7421-000-000000	442.17
	0100105517	03/26/2026	26-MAR-26		PAYROLL LIABILITIES	6-10-000-00-0000-7421-000-000000	591.65
						Total Check: 0100105517	\$5,918.69
						Total Vendor: 3685	\$5,918.69
ANTHEM LIFE INSURANCE CO.			398				
	0100105518	03/26/2026	26-MAR-26		PAYROLL LIABILITIES	6-10-000-00-0000-7421-000-000000	182.14
						Total Check: 0100105518	\$182.14
						Total Vendor: 398	\$182.14
ARIZONA HAGER			42293				
	0100105475	03/25/2026	03-25-2026_2		CLASSROOM SUPPLY REIM	6-10-201-10-0500-0610-000-000000	77.53
	0100105475	03/25/2026	03-25-2026_2		CLASSROOM SUPPLY REIM	6-10-201-10-0020-0610-000-000000	100.00
						Total Check: 0100105475	\$177.53
						Total Vendor: 42293	\$177.53
ASAP SNOW PLOWING			41483				
	0100105456	03/24/2026	03-15-2026_1		2/17 SNOW REMOVAL	6-10-710-26-2600-0300-000-000000	675.00
						Total Check: 0100105456	\$675.00
						Total Vendor: 41483	\$675.00
BATTLE MOUNTAIN HIGH SCHOOL			1128				
	0100105429	03/04/2026	03-02-2026_18		NORDIC STATE FEES	6-10-301-14-1800-0580-000-000000	625.00
						Total Check: 0100105429	\$625.00
	0100105526	03/31/2026	03-26-2026_27		4/14 HS TRACK ENTRY FEE	6-10-301-14-1800-0584-000-000000	275.00
						Total Check: 0100105526	\$275.00
						Total Vendor: 1128	\$900.00
BC INTERIORS, LLC			37460				
	0100105476	03/25/2026	2296	260412	PROPOSAL #77231 - EHS CHAIRS	6-27-971-02-3330-0610-000-008600	1,591.86
						Total Check: 0100105476	\$1,591.86
						Total Vendor: 37460	\$1,591.86

Vendor Detail

Batch Year: 26

Batch Range: 000001 - 009999

Check Date Range: 03/01/2026 - 03/31/2026

Vendor Name	Check	Check Date	Vendor Invoice	PO	Description	Account	Amount
BIGHORN HARDWARE			93				
	0100105430	03/04/2026	03-02-2026_20		2/CHARGES ACCT 30030	6-10-720-27-2700-0430-000-000000	14.99
	0100105430	03/04/2026	03-02-2026_20		2/CHARGES ACCT 30030	6-10-720-27-2700-0431-000-000000	12.99
	0100105430	03/04/2026	03-02-2026_20		2/CHARGES ACCT 30030	6-10-710-26-2600-0610-000-000000	154.94
	0100105430	03/04/2026	03-02-2026_20		2/CHARGES ACCT 30030	6-10-710-26-2600-0430-000-000000	108.62
	0100105430	03/04/2026	03-02-2026_20		2/CHARGES ACCT 30030	6-10-720-27-2700-0610-000-000000	85.75
	Total Check: 0100105430						\$377.29
	0100105457	03/24/2026	03-15-2026_8		2/CHARGES ACCT 30026	6-10-301-10-1000-0610-000-000000	198.47
	Total Check: 0100105457						\$198.47
	Total Vendor: 93						\$575.76
BOB MARKEN			6346				
	0100105431	03/04/2026	03-02-2026_17		FY26 HS BASKETBALL OFFICIALS	6-10-301-14-1815-0391-000-000000	60.00
	0100105431	03/04/2026	03-02-2026_17		FY26 HS BASKETBALL OFFICIALS	6-10-301-14-1845-0391-000-000000	60.00
	Total Check: 0100105431						\$120.00
	Total Vendor: 6346						\$120.00
BOB ROGERS TRAVEL INC.			43826				
	0100105458	03/24/2026	03-15-2026_12		MUSIC TRIP EXPENSE-BUTTER BRAIDS CREDITS	6-10-301-10-1240-0610-000-000000	7,350.00
	Total Check: 0100105458						\$7,350.00
	Total Vendor: 43826						\$7,350.00
BUNNY TAYLOR			2902				
	0100105477	03/25/2026	03-25-2026_50		STAFF SYMPATHY PLANTS	6-10-601-23-2310-0610-000-000000	35.76
	Total Check: 0100105477						\$35.76
	Total Vendor: 2902						\$35.76
BYERS HIGH SCHOOL			38750				
	0100105527	03/31/2026	03-26-2026_25		4/10 MS TRACK ENTRY FEE	6-10-201-14-1800-0584-000-000000	200.00
	Total Check: 0100105527						\$200.00
	Total Vendor: 38750						\$200.00
CAMERON SHAVER			43893				
	0100105478	03/25/2026	03-25-2026_46		COOKING CLUB SUPPLY REIM	6-22-602-00-0090-0610-000-001207	9.74
	Total Check: 0100105478						\$9.74
	Total Vendor: 43893						\$9.74
CAPLAN & EARNEST, LLC.			3779				
	0100105479	03/25/2026	51498		2/CHARGES MATTER 11842-06	6-10-602-10-0090-0300-000-000000	870.00
	Total Check: 0100105479						\$870.00
	Total Vendor: 3779						\$870.00

Vendor Detail

Batch Year: 26

Batch Range: 000001 - 009999

Check Date Range: 03/01/2026 - 03/31/2026

Vendor Name	Check	Check Date	Vendor Invoice	PO	Description	Account	Amount
CCHS			38733				
	0100105480	03/25/2026	03-25-2026_9		2/19 POWERSCHOOL DEP ACCT CORR	6-10-600-00-0000-1990-000-000000	50.00
						Total Check: 0100105480	\$50.00
	0100105481	03/25/2026	03-25-2026_10		HEALTHY KIDS SURVEY CCHS ALLOCATION	6-10-600-00-0000-1990-000-000000	350.00
						Total Check: 0100105481	\$350.00
						Total Vendor: 38733	\$400.00
CENTURYLINK			2139				
	0100105482	03/25/2026	03-25-2026_7		3/CHARGES ACCT334153508	6-10-602-10-0090-0531-000-000000	99.96
	0100105482	03/25/2026	03-25-2026_6		3/CHARGES ACCT 333591424	6-10-602-10-0090-0531-000-000000	94.07
	0100105482	03/25/2026	03-25-2026_8		3/CHARGES ACCT 333667499	6-10-602-10-0090-0531-000-000000	1,156.73
	0100105482	03/25/2026	03-25-2026_5		3/CHARGES ACCT 334086972	6-10-602-10-0090-0531-000-000000	291.40
	0100105482	03/25/2026	03-25-2026_4		3/CHARGES ACCT 333927546	6-10-602-10-0090-0531-000-000000	97.74
						Total Check: 0100105482	\$1,739.90
						Total Vendor: 2139	\$1,739.90
COLO. DEPT. OF REVENUE			100				
	0102756879	03/26/2026	03-26-2026_4		3/SIT	6-10-000-00-0000-7471-000-000000	25,726.00
						Total Check: 0102756879	\$25,726.00
						Total Vendor: 100	\$25,726.00
COLORADO DIGITAL LEARNING SERVICES			38601				
	0100105432	03/04/2026	43809		LCHS/CCHS VIRTUAL LEARNING TUITION	6-10-301-10-0050-0560-000-000000	675.00
	0100105432	03/04/2026	53931		LCHS/CCHS VIRTUAL LEARNING TUITION	6-10-301-10-0050-0560-000-000000	1,800.00
						Total Check: 0100105432	\$2,475.00
	0100105528	03/31/2026	44264		SPRING 2026 STU TUITION	6-10-301-10-0050-0560-000-000000	5,000.00
						Total Check: 0100105528	\$5,000.00
						Total Vendor: 38601	\$7,475.00
COLORADO FBLA			1604				
	0100105452	03/20/2026	REG #99556	260497		6-10-301-14-1800-0580-000-000000	3,600.00
	0100105452	03/20/2026	REG #99556	260497	STATE FBLA REG 4/2-4/4	6-10-301-10-0030-0580-000-000000	2,400.00
	0100105452	03/20/2026	REG #99556	260497		6-10-301-10-1000-0580-000-000000	1,500.00
						Total Check: 0100105452	\$7,500.00
						Total Vendor: 1604	\$7,500.00
COLORADO KNOWLEDGE BOWL ASSOCIATION			43842				
	0100105433	03/04/2026	03-02-2026_16		LAKE CO ST KNOWL BOWL TOURN- JAMIE PETERS	6-10-301-14-1800-0580-000-000000	175.00
						Total Check: 0100105433	\$175.00
						Total Vendor: 43842	\$175.00

Vendor Detail

Batch Year: 26

Batch Range: 000001 - 009999

Check Date Range: 03/01/2026 - 03/31/2026

Vendor Name	Check	Check Date	Vendor Invoice	PO	Description	Account	Amount
COLORADO SPORTS OFFICIALS			24562				
	0100105529	03/31/2026	2025-15		FY26 MS BOYS BASKETBALL OFFICIALS	6-10-201-14-1845-0391-000-000000	1,460.00
						Total Check: 0100105529	\$1,460.00
						Total Vendor: 24562	\$1,460.00
COMMUNITY BANKS OF COLORADO			110				
	0102756876	03/26/2026	03-26-2026_1		3/PAYROLL	6-10-000-00-0000-8102-000-000000	604,000.00
						Total Check: 0102756876	\$604,000.00
						Total Vendor: 110	\$604,000.00
CORPORATE TRANSLATION SERVICES, INC			32441				
	0100105483	03/25/2026	325625		2/PHONE TRANSLATION ACCT 25016	6-10-602-10-0090-0300-000-000000	86.24
						Total Check: 0100105483	\$86.24
						Total Vendor: 32441	\$86.24
CUMMINS SALES AND SERVICE			43567				
	0100105530	03/31/2026	42-260376757	260416	EST REF 334945 - LCES GENERATOR REPAIR/S	6-10-710-26-2600-0300-000-000000	7,909.68
						Total Check: 0100105530	\$7,909.68
						Total Vendor: 43567	\$7,909.68
DEPENDABLE AUTO GLASS			23388				
	0100105531	03/31/2026	15144		BUS WINDOW REPAIR	6-10-720-27-2700-0430-000-000000	150.00
						Total Check: 0100105531	\$150.00
						Total Vendor: 23388	\$150.00
DYNAMIC PROGRAM MANAGEMENT LLC			39390				
	0100105484	03/25/2026	2402		2/SUMMER 2026 PROJECT CHARGES	6-10-602-10-0090-0300-000-000000	4,902.50
						Total Check: 0100105484	\$4,902.50
						Total Vendor: 39390	\$4,902.50
EAGLE VALLEY HIGH SCHOOL			1144				
	0100105532	03/31/2026	03-26-2026_1		4/4 HS TRACK ENTRY FEE	6-10-301-14-1800-0584-000-000000	275.00
						Total Check: 0100105532	\$275.00
						Total Vendor: 1144	\$275.00
EVALYN ELLA PARKS			43877				
	0100105453	03/20/2026	03-20-2026_1		FAY CDL SCHOOL BUS TRAINING	6-10-720-27-2700-0300-000-000000	1,200.00
						Total Check: 0100105453	\$1,200.00
						Total Vendor: 43877	\$1,200.00

Vendor Detail

Batch Year: 26

Batch Range: 000001 - 009999

Check Date Range: 03/01/2026 - 03/31/2026

Vendor Name		Vendor					
Check	Check Date	Invoice	PO	Description	Account		Amount
FIRELIGHT SUPERVISION		43222					
0100105434	03/04/2026	1405	260203	CLINICAL SUPERVISION	6-22-101-00-2100-0300-000-004451		325.00
						Total Check: 0100105434	\$325.00
						Total Vendor: 43222	\$325.00
FLESHER HINTON MUSIC CO.		171					
0100105533	03/31/2026	312173		MUSIC SUPPLY	6-10-101-10-1200-0610-000-000000		50.39
						Total Check: 0100105533	\$50.39
						Total Vendor: 171	\$50.39
FLEX ACCOUNT ADMINISTRATION AMERICAN FID		3686					
0100105519	03/26/2026	26-MAR-26		PAYROLL LIABILITIES	6-26-000-00-0000-7421-000-000000		3.75
0100105519	03/26/2026	26-MAR-26		PAYROLL LIABILITIES	6-21-000-00-0000-7421-000-000000		20.84
0100105519	03/26/2026	26-MAR-26		PAYROLL LIABILITIES	6-19-000-00-0000-7421-000-000000		5.00
0100105519	03/26/2026	26-MAR-26		PAYROLL LIABILITIES	6-22-000-00-0000-7421-000-000000		23.08
0100105519	03/26/2026	26-MAR-26		PAYROLL LIABILITIES	6-10-000-00-0000-7421-000-000000		2,529.22
0100105519	03/26/2026	26-MAR-26		PAYROLL LIABILITIES	6-27-000-00-0000-7421-000-000000		16.25
						Total Check: 0100105519	\$2,598.14
						Total Vendor: 3686	\$2,598.14
GHL PROPERTY SERVICES LLC		42048					
0100105485	03/25/2026	23336		3/15 LCHS AND LCE TRANSLATION	6-10-602-10-0090-0300-000-000000		394.25
0100105485	03/25/2026	23293-REISSUE		6/14/25 CELL PHONE TRANS REISSUE	6-10-600-00-0000-1990-000-000000		200.40
0100105485	03/25/2026	23292-REISSUE		6/14/25 GRAD/PROM TRANS REISSUE	6-10-600-00-0000-1990-000-000000		550.80
						Total Check: 0100105485	\$1,145.45
						Total Vendor: 42048	\$1,145.45
GOLD SUPPLY GROUP, INC		43834					
0100105459	03/24/2026	00105177	260484		6-27-971-26-3330-0610-000-008600		306.12
0100105459	03/24/2026	00105177	260484	QUOTE W-060552 PK TOOTHBRUSH SANITIZERS	6-26-971-33-3310-0610-000-000000		183.66
0100105459	03/24/2026	00105177	260484		6-19-971-00-0040-0610-000-003897		122.45
						Total Check: 0100105459	\$612.23
						Total Vendor: 43834	\$612.23
GRAINGER		3709					
0100105460	03/24/2026	9821744621		MAINTANENCE REPAIR	6-10-710-26-2600-0430-000-000000		261.12
						Total Check: 0100105460	\$261.12
0100105486	03/25/2026	9836445941		MAINT REPAIR	6-10-710-26-2600-0430-000-000000		64.40
0100105486	03/25/2026	9836942061		MAINT REPAIR	6-10-710-26-2600-0430-000-000000		321.15
						Total Check: 0100105486	\$385.55
						Total Vendor: 3709	\$646.67
GRAND JUNCTION HIGH SCHOOL		2459					
0100105435	03/04/2026	03-02-2026_3		2/14 KNOWLEDGE BOWL	6-10-301-14-1800-0584-000-000000		35.00
						Total Check: 0100105435	\$35.00
						Total Vendor: 2459	\$35.00

Vendor Detail

Batch Year: 26

Batch Range: 000001 - 009999

Check Date Range: 03/01/2026 - 03/31/2026

Vendor Name	Check	Check Date	Vendor Invoice	PO	Description	Account	Amount
GRIZ 2 AUTO PARTS			10871				
	0100105436	03/04/2026	03-02-2026_22		2/CHARGES ACCT 6802	6-10-720-27-2700-0430-000-000000	50.97
	0100105436	03/04/2026	03-02-2026_22		2/CHARGES ACCT 6802	6-10-720-27-2700-0431-000-000000	497.89
	0100105436	03/04/2026	03-02-2026_22		2/CHARGES ACCT 6802	6-10-720-27-2700-0610-000-000000	462.53
						Total Check: 0100105436	\$1,011.39
						Total Vendor: 10871	\$1,011.39
HERALD DEMOCRAT			60				
	0100105437	03/04/2026	426146		12/15/25 charges acct 38171	6-10-601-23-2391-0540-000-000000	110.00
						Total Check: 0100105437	\$110.00
						Total Vendor: 60	\$110.00
HORACE MANN LIFE INSURANCE CO.			211				
	0100105520	03/26/2026	26-MAR-26		PAYROLL LIABILITIES	6-10-000-00-0000-7421-000-000000	324.94
						Total Check: 0100105520	\$324.94
						Total Vendor: 211	\$324.94
INTERNAL REVENUE SERVICE			838				
	0102756880	03/26/2026	03-26-2026_5		3/FIT	6-10-000-00-0000-7428-000-000000	22,921.64
	0102756880	03/26/2026	03-26-2026_5		3/FIT	6-10-000-00-0000-7472-000-000000	45,370.45
						Total Check: 0102756880	\$68,292.09
						Total Vendor: 838	\$68,292.09
JAMES MULCEY			42862				
	0100105438	03/04/2026	03-02-2026_21		2/27 TRAVEL EXP REIMB GRND JUNCT BBALL	6-10-601-25-2510-0580-000-000000	59.86
	0100105438	03/04/2026	03-02-2026_21		2/27 MILEAGE REIMB G.J. BBALL	6-10-601-25-2510-0580-000-000000	223.75
						Total Check: 0100105438	\$283.61
						Total Vendor: 42862	\$283.61
JAZMIN GARCIA PEREA			43931				
	0100105487	03/25/2026	03-25-2026_49		3/21 MILEAGE REIM MS G SOCCER	6-10-201-14-1826-0510-000-000000	84.37
						Total Check: 0100105487	\$84.37
						Total Vendor: 43931	\$84.37
JOYCE LACOME			5738				
	0100105534	03/31/2026	03-26-2026_13		2/13-2/27 FOOD REIMBURSEMENT	6-10-720-27-2700-0690-000-000000	158.79
						Total Check: 0100105534	\$158.79
						Total Vendor: 5738	\$158.79
KATHY FITZSIMMONS			2323				
	0100105439	03/04/2026	03-02-2026_14		REIMB STAFF PARTY SUPPLY	6-10-601-23-2310-0610-000-000000	192.35
						Total Check: 0100105439	\$192.35
						Total Vendor: 2323	\$192.35

Vendor Detail

Batch Year: 26

Batch Range: 000001 - 009999

Check Date Range: 03/01/2026 - 03/31/2026

Vendor Name	Check	Check Date	Vendor Invoice	PO	Description	Account	Amount
KELLY HORNING			27030				
	0100105461	03/24/2026	03-15-2026_6		REIMB TRAVEL EXP 2/26 PK SPED CONF	6-26-971-33-3310-0610-000-000000	48.09
	0100105461	03/24/2026	03-15-2026_6		REIMB TRAVEL EXP 2/26 PK SPED CONF	6-19-971-00-0040-0580-000-003897	32.06
	0100105461	03/24/2026	03-15-2026_6		REIMB TRAVEL EXP 2/26 PK SPED CONF	6-27-971-26-3330-0580-000-008600	80.16
Total Check: 0100105461							\$160.31
Total Vendor: 27030							\$160.31
KIM KORTKAMP			9466				
	0100105535	03/31/2026	03-26-2026_24		1/22-1/24 AT RISK CONF EXP REIM	6-10-602-20-2213-0350-000-000000	234.71
Total Check: 0100105535							\$234.71
Total Vendor: 9466							\$234.71
KINDLING COLLABORATIVE, LLC			42161				
	0100105440	03/04/2026	03022026_13	260457		6-22-602-00-2100-0300-000-003231	378.00
	0100105440	03/04/2026	03022026_13	260457	2/1/26-6/30/26 GRANT CONSULTANT	6-22-602-00-2100-0300-000-003192	393.75
	0100105440	03/04/2026	03022026_13	260457		6-22-602-00-0090-0300-000-003202	2,961.00
	0100105440	03/04/2026	03022026_13	260457		6-22-101-00-2100-0300-000-004451	267.75
Total Check: 0100105440							\$4,000.50
Total Vendor: 42161							\$4,000.50
KONICA MINOLTA			2292				
	0100105488	03/25/2026	48772308		2/DISTRICT COPIERS	6-26-971-33-3330-0330-000-000000	105.87
	0100105488	03/25/2026	48772308		2/DISTRICT COPIERS	6-27-971-01-3330-0330-000-008600	26.49
	0100105488	03/25/2026	48772308		2/DISTRICT COPIERS	6-27-971-26-3330-0330-000-008600	264.69
	0100105488	03/25/2026	48772308		2/DISTRICT COPIERS	6-10-602-10-0090-0330-000-000000	5,919.81
	0100105488	03/25/2026	48772307		2/DISTRICT COPIERS	6-10-602-10-0090-0330-000-000000	60.82
	0100105488	03/25/2026	48772308		2/DISTRICT COPIERS	6-19-971-00-0040-0330-000-003897	132.34
Total Check: 0100105488							\$6,510.02
Total Vendor: 2292							\$6,510.02
LAKE COUNTY BUILD A GENERATION			31259				
	0100105441	03/04/2026	03-02-2026_13		6 OF 12 / FAMILY ENGAGEMENT	6-22-602-00-2100-0300-000-001214	1,250.00
Total Check: 0100105441							\$1,250.00
Total Vendor: 31259							\$1,250.00
LAKE COUNTY HIGH SCHOOL			91042				
	0100105489	03/25/2026	03-25-2026_15		HEALTHY KIDS SURVEY-JR HIGH ALLOCATION	6-10-600-00-0000-1990-000-000000	350.00
Total Check: 0100105489							\$350.00
	0100105490	03/25/2026	03-25-2026_16		HEALTHY KIDS SURVEY-LCHS ALLOCATION	6-10-600-00-0000-1990-000-000000	350.00
Total Check: 0100105490							\$350.00
Total Vendor: 91042							\$700.00

Vendor Detail

Batch Year: 26

Batch Range: 000001 - 009999

Check Date Range: 03/01/2026 - 03/31/2026

Vendor Name	Check	Check Date	Vendor Invoice	PO	Description	Account	Amount
LAKE COUNTY LANDFILL			370				
	0100105536	03/31/2026	03-26-2026_22		2/DISPOSAL SERVICES	ACCT L0029 6-10-710-26-2600-0421-000-000000	270.07
	Total Check: 0100105536						\$270.07
Total Vendor: 370							\$270.07
LAKESHORE LEARNING MATERIALS			4237				
	0100105462	03/24/2026	93384969	260417		6-27-971-25-3330-0610-000-008600	945.01
	0100105462	03/24/2026	93384969	260417	QUOTE b129291 OUTDOOR CLASSROOM SUPPLY	6-26-971-33-3310-0610-000-000000	378.00
	0100105462	03/24/2026	93384969	260417		6-19-971-00-0040-0610-000-003897	567.00
	Total Check: 0100105462						\$1,890.01
Total Vendor: 4237							\$1,890.01
LAUREN BISSONETTE			10197				
	0100105463	03/24/2026	03-15-2026_9		REIMB HS SPED CLASSROOM SUPPLY	6-10-301-12-1700-0610-000-003130	141.87
	Total Check: 0100105463						\$141.87
Total Vendor: 10197							\$141.87
LCEA			20214				
	0100105521	03/26/2026	26-MAR-26		PAYROLL LIABILITIES	6-22-000-00-0000-7421-000-000000	279.80
	0100105521	03/26/2026	26-MAR-26		PAYROLL LIABILITIES	6-10-000-00-0000-7421-000-000000	3,851.47
	0100105521	03/26/2026	26-MAR-26		PAYROLL LIABILITIES	6-27-000-00-0000-7421-000-000000	239.68
	0100105521	03/26/2026	26-MAR-26		PAYROLL LIABILITIES	6-19-000-00-0000-7421-000-000000	147.43
	0100105521	03/26/2026	26-MAR-26		PAYROLL LIABILITIES	6-26-000-00-0000-7421-000-000000	147.80
	Total Check: 0100105521						\$4,666.18
Total Vendor: 20214							\$4,666.18
LCHS ACTIVITY			3683				
	0100105537	03/31/2026	03-26-2026_6		POWERSCHOOL HUB DEPOSIT - SEP, OCT, DEC	6-10-600-00-0000-1990-000-000000	2,455.00
	Total Check: 0100105537						\$2,455.00
Total Vendor: 3683							\$2,455.00
LIONS CLUB			3360				
	0100105464	03/24/2026	03-15-2026_2		FOOD CARD FOR LCES COOKING CLUB	6-22-602-00-0090-0610-000-001207	100.00
	Total Check: 0100105464						\$100.00
	0100105465	03/24/2026	03-15-2026_3		FOOD CARD FOR LCIS COOKING CLUB	6-22-602-00-0090-0610-000-001207	100.00
	Total Check: 0100105465						\$100.00
	0100105466	03/24/2026	03-15-2026_4		FOOD CARD FOR LCHS COOKING CLUB	6-22-602-00-0090-0610-000-001207	100.00
	Total Check: 0100105466						\$100.00
Total Vendor: 3360							\$300.00

Vendor Detail

Batch Year: 26

Batch Range: 000001 - 009999

Check Date Range: 03/01/2026 - 03/31/2026

Vendor Name	Check	Check Date	Vendor Invoice	PO	Description	Account	Amount
LUCIA DEBORD			43915				
	0100105491	03/25/2026	03-25-2026_47		COOKING CLUB SUPPLY REIM	6-22-602-00-0090-0610-000-001207	25.45
	Total Check: 0100105491						\$25.45
Total Vendor: 43915							\$25.45
LYONS GADDIS,P.C.			39039				
	0100105492	03/25/2026	STATEMENT #6		2/CHARGES ACCT 19221.0000	6-10-602-10-0090-0300-000-000000	745.50
	Total Check: 0100105492						\$745.50
Total Vendor: 39039							\$745.50
MARCIN ENGINEERING			43281				
	0100105493	03/25/2026	15097	260224	LAND SURVEY SERVICES	6-10-602-00-2518-0300-000-000000	1,169.50
	Total Check: 0100105493						\$1,169.50
Total Vendor: 43281							\$1,169.50
MARIA ANTONIETA LIZARDO			17922				
	0100105494	03/25/2026	03-25-2026_18		2/11-3/10 MILEAGE REIM	6-21-740-31-3100-0580-000-000000	33.82
	0100105494	03/25/2026	03-25-2026_18		2/11-3/10 MILEAGE REIM	6-10-710-26-2600-0580-000-000000	33.83
	Total Check: 0100105494						\$67.65
Total Vendor: 17922							\$67.65
MCI			2960				
	0100105442	03/04/2026	03-02-2026_5		2/ACCT 6P603161	6-10-602-10-0090-0531-000-000000	38.88
	Total Check: 0100105442						\$38.88
	0100105495	03/25/2026	03-25-2026_20		2/LONG DISTANCE FAX 08660958314	6-10-602-10-0090-0531-000-000000	88.77
	Total Check: 0100105495						\$88.77
	0100105496	03/25/2026	03-25-2026_19		3/ACCT 6P603161 FAX	6-10-602-10-0090-0531-000-000000	38.88
	Total Check: 0100105496						\$38.88
Total Vendor: 2960							\$166.53
MEADOW GOLD DAIRIES			1343				
	0100105443	03/04/2026	03-02-2026_19		2/MEADOWGOLD MILK ACCT 1052668	6-21-740-31-3100-0631-000-000000	3,619.20
	Total Check: 0100105443						\$3,619.20
Total Vendor: 1343							\$3,619.20
MELISSA VILLARREAL			42706				
	0100105467	03/24/2026	03-15-2026_11		FY26 SHOE REIMBURSEMENT	6-10-720-27-2700-0610-000-000000	100.00
	Total Check: 0100105467						\$100.00
Total Vendor: 42706							\$100.00

Vendor Detail

Batch Year: 26

Batch Range: 000001 - 009999

Check Date Range: 03/01/2026 - 03/31/2026

Vendor Name	Check	Check Date	Vendor Invoice	PO	Description	Account	Amount
MICHELE DEWINE			24058				
	0100105468	03/24/2026	03-15-2026_7		REIMB JR HI SCI CLASSROOM SUPPLY	6-10-201-10-1310-0610-000-000000	301.76
						Total Check: 0100105468	\$301.76
	0100105538	03/31/2026	03-26-2026_3		REIMBURSE JR HI SCIENCE CLASSROOM SUPPLY	6-10-201-10-1310-0610-000-000000	224.06
						Total Check: 0100105538	\$224.06
						Total Vendor: 24058	\$525.82
MILLIG, LLC			43508				
	0100105497	03/25/2026	03252026_2	260309	ENERGY LIGHTING PROJECT #24012	6-43-602-00-4000-0723-000-001209	135,572.41
						Total Check: 0100105497	\$135,572.41
						Total Vendor: 43508	\$135,572.41
MOUNTAIN MAGIC DRAIN CLEANING			33731				
	0100105469	03/24/2026	03152026_26	260445	LCIS DRAIN SCOPE & JET	6-10-710-26-2600-0300-000-000000	731.25
						Total Check: 0100105469	\$731.25
						Total Vendor: 33731	\$731.25
OLIVIA REISER			43885				
	0100105470	03/24/2026	03-15-2026_13		REIMB LCIS SPEECH SUPPLY	6-10-101-12-1771-0610-000-003130	77.45
						Total Check: 0100105470	\$77.45
						Total Vendor: 43885	\$77.45
PARKVILLE WATER DISTRICT			334				
	0100105539	03/31/2026	03-26-2026_15		3/WATER ACCT 1264	6-10-710-26-2600-0411-000-000000	77.75
	0100105539	03/31/2026	03-26-2026_21		3/WATER ACCT 1151	6-19-971-00-2600-0410-000-003897	37.68
	0100105539	03/31/2026	03-26-2026_21		3/WATER ACCT 1151	6-26-971-33-3310-0810-000-000000	32.97
	0100105539	03/31/2026	03-26-2026_21		3/WATER ACCT 1151	6-27-971-01-3330-0620-000-008600	14.15
	0100105539	03/31/2026	03-26-2026_21		3/WATER ACCT 1151	6-27-971-26-3330-0620-000-008600	80.08
	0100105539	03/31/2026	03-26-2026_14		3/WATER ACCT 1265	6-10-710-26-2600-0411-000-000000	74.76
	0100105539	03/31/2026	03-26-2026_21		3/WATER ACCT 1151	6-10-710-26-2600-0411-000-000000	306.19
	0100105539	03/31/2026	03-26-2026_16		3/WATER ACCT 1219	6-10-710-26-2600-0411-000-000000	88.87
	0100105539	03/31/2026	03-26-2026_17		3/WATER ACCT 1218	6-10-710-26-2600-0411-000-000000	180.16
	0100105539	03/31/2026	03-26-2026_18		3/WATER ACCT 1217	6-10-710-26-2600-0411-000-000000	287.76
	0100105539	03/31/2026	03-26-2026_19		3/WATER ACCT 1216	6-10-710-26-2600-0411-000-000000	741.94
	0100105539	03/31/2026	03-26-2026_20		3/WATER ACCT 1206	6-10-710-26-2600-0411-000-000000	290.75
						Total Check: 0100105539	\$2,213.06
						Total Vendor: 334	\$2,213.06
PEAK TO PEAK MOVERS			43800				
	0100105444	03/04/2026	04733	260485	INVOICE 04733 CONSOLIDAITON MOVING SERVI	6-43-602-00-4000-0720-000-000000	1,311.00
						Total Check: 0100105444	\$1,311.00
						Total Vendor: 43800	\$1,311.00

Vendor Detail

Batch Year: 26

Batch Range: 000001 - 009999

Check Date Range: 03/01/2026 - 03/31/2026

Vendor Name	Check	Check Date	Vendor Invoice	PO	Description	Account	Amount
PERA			340				
	0102756877	03/26/2026	03-26-2026_2		3/PERA	6-10-000-00-0000-7473-000-000000	258,673.89
Total Check: 0102756877							\$258,673.89
Total Vendor: 340							\$258,673.89
PHEBE NICOLE CONDON			34649				
	0100105540	03/31/2026	03-26-2026_4		REIMBURSE SCIENCE CLASSROOM SUPPLY	6-10-301-10-1310-0610-000-000000	164.75
	0100105540	03/31/2026	03-26-2026_5		REIMBURSE SCIENCE CLASSROOM SUPPLY	6-10-301-10-0030-0610-000-000000	36.07
	0100105540	03/31/2026	03-26-2026_5		REIMBURSE SCIENCE CLASSROOM SUPPLY	6-10-301-10-1310-0610-000-000000	38.10
Total Check: 0100105540							\$238.92
Total Vendor: 34649							\$238.92
PHONEWARE			40070				
	0100105498	03/25/2026	IN-8000832938734		3/LOCAL AND LONG DISTANCE CARRIER	6-10-602-10-0090-0531-000-000000	724.80
Total Check: 0100105498							\$724.80
Total Vendor: 40070							\$724.80
PINNACOL ASSURANCE			454				
	0100105499	03/25/2026	INV-2334416		9 OF 9/WORKERS COMP PREMIUM	6-10-602-28-2850-0521-000-000000	10,153.00
	0100105499	03/25/2026	INV-2334416		9 OF 9/DEDUCTIBLE	6-10-602-28-2850-0521-000-000000	2,885.70
Total Check: 0100105499							\$13,038.70
Total Vendor: 454							\$13,038.70
PONDEROSA HIGH SCHOOL			41793				
	0100105541	03/31/2026	03-26-2026_26		4/8 HS TRACK ENTRY FEE	6-10-301-14-1800-0584-000-000000	300.00
Total Check: 0100105541							\$300.00
Total Vendor: 41793							\$300.00
PROCARE THERAPY			41041				
	0100105542	03/31/2026	21416021		W/E 3/18 / SCHOOL COUNSELOR	6-22-101-00-0010-0300-000-004451	1,760.00
Total Check: 0100105542							\$1,760.00
Total Vendor: 41041							\$1,760.00
PUEBLO CENTENNIAL HIGH SCHOOL			3158				
	0100105543	03/31/2026	03-26-2026_29		5/1 HS TRACK ENTRY FEE	6-10-301-14-1800-0584-000-000000	325.00
Total Check: 0100105543							\$325.00
Total Vendor: 3158							\$325.00

Vendor Detail

Batch Year: 26

Batch Range: 000001 - 009999

Check Date Range: 03/01/2026 - 03/31/2026

Vendor Name	Check	Check Date	Vendor Invoice	PO	Description	Account	Amount
PYE-BARKER FIRE & SAFETY, LLC			37060				
	0100105445	03/04/2026	IV00992071	260486	KITCHEN FIRE SUPPRESSION SYSTEM 6-10-710-26-2600-0300-000-000000		665.40
	0100105445	03/04/2026	IV00992083	260486	INSPECTIO KITCHEN FIRE SUPPRESSION SYSTEM 6-10-710-26-2600-0300-000-000000		549.40
	0100105445	03/04/2026	IV00992064	260486	INSPECTIO KITCHEN FIRE SUPPRESSION SYSTEM 6-10-710-26-2600-0300-000-000000		851.50
	0100105445	03/04/2026	IV00992090	260486	INSPECTIO KITCHEN FIRE SUPPRESSION SYSTEM 6-10-710-26-2600-0300-000-000000		958.10
						Total Check: 0100105445	\$3,024.40
						Total Vendor: 37060	\$3,024.40
QUIZ EQUIPMENT LLC			43796				
	0100105471	03/24/2026	0222726-2	260465	KNOWLEDGE BOWL QUIZBOX WITH TAPE MEASURE	6-10-301-14-1800-0610-000-000000	580.00
						Total Check: 0100105471	\$580.00
						Total Vendor: 43796	\$580.00
RIVERSIDE TROPHIES			5079				
	0100105500	03/25/2026	13676		SPORT PLAQUE AWARDS	6-10-301-14-1815-0610-000-000000	29.95
	0100105500	03/25/2026	13677		SPORT PLAQUE AWARDS	6-10-301-14-1800-0613-000-000000	130.00
	0100105500	03/25/2026	13676		SPORT PLAQUE AWARDS	6-10-301-14-1800-0613-000-000000	359.40
	0100105500	03/25/2026	13676		SPORT PLAQUE AWARDS	6-10-301-14-1845-0610-000-000000	29.95
						Total Check: 0100105500	\$549.30
						Total Vendor: 5079	\$549.30
SAFEWAY INC.			376				
	0100105515	03/25/2026	03-25-2026_1		3/CHARGES ACCT 52324	6-27-971-01-3330-0610-000-008600	32.47
	0100105515	03/25/2026	03-25-2026_1		3/CHARGES ACCT 52324	6-21-740-31-3100-0630-000-000000	401.28
	0100105515	03/25/2026	03-25-2026_1		3/CHARGES ACCT 52324	6-10-720-27-2700-0610-000-000000	21.49
						Total Check: 0100105515	\$455.24
						Total Vendor: 376	\$455.24
SALIDA HIGH SCHOOL			379				
	0100105446	03/04/2026	2526019		12/13/25 HS WRESTLING FEE	6-10-301-14-1800-0584-000-000000	280.00
						Total Check: 0100105446	\$280.00
	0100105544	03/31/2026	03-26-2026_23		4/22 MS TRACK ENTRY FEE	6-10-201-14-1800-0584-000-000000	200.00
						Total Check: 0100105544	\$200.00
						Total Vendor: 379	\$480.00
SANGRE DE CRISTO ELECTRIC			382				
	0100105501	03/25/2026	03-25-2026_25		2/TWIN LAKES SCHOOLHOUSE ACCT 13090000	6-10-710-26-2600-0620-000-000000	54.86
						Total Check: 0100105501	\$54.86
						Total Vendor: 382	\$54.86
SARA LOPEZ			43940				
	0100105502	03/25/2026	03-25-2026_52		LCHS AP INTERVIEW MILEAGE REIM	6-10-602-10-0090-0580-000-000000	309.55
						Total Check: 0100105502	\$309.55
						Total Vendor: 43940	\$309.55

Vendor Detail

Batch Year: 26

Batch Range: 000001 - 009999

Check Date Range: 03/01/2026 - 03/31/2026

Vendor Name	Check	Check Date	Vendor Invoice	PO	Description	Account	Amount	
SCANGA MEAT CO			35572					
	0100105503	03/25/2026	14:38		MEAT PRODUCTS	6-21-740-31-3100-0630-000-000000	788.67	
							Total Check: 0100105503	\$788.67
							Total Vendor: 35572	\$788.67
SEAN FAY			43575					
	0100105545	03/31/2026	03-26-2026_10		3/13-3/27 FOOD REIMBURSEMENT	6-10-720-27-2700-0690-000-000000	59.21	
	0100105545	03/31/2026	03-26-2026_10		3/27 FUEL REIMBURSEMENT	6-10-720-27-2700-0626-000-000000	25.11	
	0100105545	03/31/2026	03-26-2026_10		CDL TRAINING	6-10-720-27-2700-0300-000-000000	156.19	
							Total Check: 0100105545	\$240.51
							Total Vendor: 43575	\$240.51
SPARK AND COMPASS CONSULTING			42870					
	0100105447	03/04/2026	I-030226		1/19-2/23 MTG SUPPLY REIMB	6-22-602-00-2100-0610-000-001213	1,002.51	
							Total Check: 0100105447	\$1,002.51
							Total Vendor: 42870	\$1,002.51
SPRAGUE PEST SOLUTIONS			42455					
	0100105504	03/25/2026	6126401		3/PEST CONTROL ACCT 101905698	6-10-710-26-2600-0300-000-000000	75.00	
	0100105504	03/25/2026	6126400		3/PEST CONTROL ACCT 101905698	6-10-710-26-2600-0300-000-000000	90.00	
	0100105504	03/25/2026	6126403		3/PEST CONTROL ACCT 101905698	6-10-710-26-2600-0300-000-000000	75.00	
	0100105504	03/25/2026	6126402		3/PEST CONTROL ACCT 101905698	6-10-710-26-2600-0300-000-000000	75.00	
	0100105504	03/25/2026	6126399		3/PEST CONTROL ACCT 101905698	6-10-710-26-2600-0300-000-000000	130.00	
	0100105504	03/25/2026	6126398		3/PEST CONTROL ACCT 101905698	6-10-710-26-2600-0300-000-000000	130.00	
							Total Check: 0100105504	\$575.00
							Total Vendor: 42455	\$575.00
STECK INSIGHTS LLC			36161					
	0100105505	03/25/2026	3813		3/MONTHLY WEBSITE SERVICE	6-10-602-10-0090-0300-000-000000	259.00	
							Total Check: 0100105505	\$259.00
							Total Vendor: 36161	\$259.00
STERLING LITERACY CONSULTING			38318					
	0100105506	03/25/2026	LC22026	260098	FY26 MONTHLY COACHING	6-22-602-00-2210-0300-000-003246	16,000.00	
							Total Check: 0100105506	\$16,000.00
							Total Vendor: 38318	\$16,000.00
SUNWARD FEDERAL CREDIT UNION			43559					
	0100105522	03/26/2026	26-MAR-26		PAYROLL LIABILITIES	6-10-000-00-0000-7421-000-000000	286.61	
							Total Check: 0100105522	\$286.61
							Total Vendor: 43559	\$286.61
TAYLOR TRELKA			27359					
	0100105507	03/25/2026	03-25-2026_34		2/23 QTR 3 PASS MTG FOOD REIM	6-22-602-00-0090-0610-000-003202	237.81	
							Total Check: 0100105507	\$237.81
							Total Vendor: 27359	\$237.81

Vendor Detail

Batch Year: 26

Batch Range: 000001 - 009999

Check Date Range: 03/01/2026 - 03/31/2026

Vendor Name	Check	Check Date	Vendor Invoice	PO	Description	Account	Amount
TAYLOR TRELKA CONSULTING LLC			42838				
	0100105508	03/25/2026	007 PO250691	250691		6-22-602-00-2100-0300-000-004010	60.00
	0100105508	03/25/2026	007 PO250691	250691		6-22-302-00-0060-0300-000-004010	3,000.00
	Total Check: 0100105508						\$3,060.00
	0100105509	03/25/2026	008-PO260466	260466	2/12-6/30/26 PASS FACILITATION AND C	6-22-602-01-2100-0300-000-007839	540.00
	Total Check: 0100105509						\$540.00
	Total Vendor: 42838						\$3,600.00
THRIVE THERAPY GLOBAL PLLC			43150				
	0100105448	03/04/2026	82		2/PSYCHOLOGY SERVICES	6-10-602-12-1700-0300-000-003130	66.00
	Total Check: 0100105448						\$66.00
	0100105510	03/25/2026	85		3/19/PSYCHOLOGY SERVICE	6-10-602-12-1700-0300-000-003130	50.00
	0100105510	03/25/2026	84		3/7/PSYCHOLOGY SERVICE	6-10-602-12-1700-0300-000-003130	3,700.00
	Total Check: 0100105510						\$3,750.00
	Total Vendor: 43150						\$3,816.00
TIGER, INC			29874				
	0100105511	03/25/2026	0226585972		2/UTILITIES CUST 01627-02	6-10-710-26-2600-0620-000-000000	2,916.74
	0100105511	03/25/2026	0226585973		2/UTILITIES CUST 01627-04	6-10-710-26-2600-0620-000-000000	5,279.57
	0100105511	03/25/2026	0226586055		2/UTILITIES CUST 01627-07	6-19-971-00-2600-0410-000-003897	641.33
	0100105511	03/25/2026	0226585975		2/UTILITIES CUST 01627-06	6-10-710-26-2600-0620-000-000000	1,144.61
	0100105511	03/25/2026	0226586055		2/UTILITIES CUST 01627-07	6-26-971-33-3310-0610-000-000000	561.16
	0100105511	03/25/2026	0226586055		2/UTILITIES CUST 01627-07	6-27-971-01-3330-0620-000-008600	240.52
	0100105511	03/25/2026	0226586055		2/UTILITIES CUST 01627-07	6-27-971-26-3330-0620-000-008600	1,362.82
	0100105511	03/25/2026	0226586055		2/UTILITIES CUST 01627-07	6-10-710-26-2600-0620-000-000000	5,210.80
	0100105511	03/25/2026	0226585974		2/UTILITIES CUST 01627-05	6-10-710-26-2600-0620-000-000000	974.41
	0100105511	03/25/2026	0226585971		2/UTILITIES CUST 01627-01	6-10-710-26-2600-0620-000-000000	5,357.48
	Total Check: 0100105511						\$23,689.44
	Total Vendor: 29874						\$23,689.44
VALLEY HIGH SCHOOL			248				
	0100105546	03/31/2026	03-26-2026_2		4/11 HS TRACK ENTRY FEE	6-10-301-14-1800-0584-000-000000	300.00
	Total Check: 0100105546						\$300.00
	Total Vendor: 248						\$300.00
VERIZON WIRELESS			3373				
	0100105512	03/25/2026	6137757689		2/CHARGES ACCT 970483601-00001	6-27-971-26-3330-0531-000-008600	168.76
	0100105512	03/25/2026	6137757689		2/CHARGES ACCT 970483601-00001	6-27-971-01-3330-0531-000-008600	51.05
	0100105512	03/25/2026	6137757689		2/CHARGES ACCT 970483601-00001-BUS PHONE	6-10-602-10-0090-0531-000-000000	61.05
	0100105512	03/25/2026	6137757689		2/CHARGES ACCT 970483601-00001	6-10-602-10-0090-0531-000-000000	2,887.29
	Total Check: 0100105512						\$3,168.15
	Total Vendor: 3373						\$3,168.15
WASTE MANAGEMENT OF CO INC			39934				
	0100105449	03/04/2026	0746031-2520-9		2/MONTHLY TRASH ACCT 27-15308-13008	6-10-710-26-2600-0421-000-000000	4,068.56
	Total Check: 0100105449						\$4,068.56
	Total Vendor: 39934						\$4,068.56

Vendor Detail

Batch Year: 26

Batch Range: 000001 - 009999

Check Date Range: 03/01/2026 - 03/31/2026

Vendor Name		Vendor					
Check	Check Date	Invoice	PO	Description	Account		Amount
WEST GRAND HIGH SCHOOL		1834					
0100105547	03/31/2026	03-26-2026_30		5/8 HS TRACK ENTRY FEE	6-10-301-14-1800-0584-000-000000		250.00
						Total Check: 0100105547	\$250.00
						Total Vendor: 1834	\$250.00
WESTERN SLOPE BAR SUPPLIES		3682					
0100105513	03/25/2026	03-25-2026_45		3/WATER ACCT 34150000	6-10-720-27-2700-0610-000-000000		139.30
0100105513	03/25/2026	03-25-2026_45		3/WATER ACCT 34150000	6-10-602-10-0090-0610-000-000000		137.20
						Total Check: 0100105513	\$276.50
						Total Vendor: 3682	\$276.50
WJ VISIONS, LLC		34444					
0100105450	03/04/2026	226	260178	SOCIAL WORK SUPERVISION STUDENT RE-ENGAG	6-22-602-00-2100-0300-000-003231		300.00
						Total Check: 0100105450	\$300.00
						Total Vendor: 34444	\$300.00
XCEL ENERGY		3732					
0100105451	03/04/2026	966548870		2/UTILITIES ACCT 53-0013027313-0	6-26-971-33-3310-0810-000-000000		345.02
0100105451	03/04/2026	966548870		2/UTILITIES ACCT 53-0013027313-0	6-27-971-01-3330-0620-000-008600		147.88
0100105451	03/04/2026	966548870		2/UTILITIES ACCT 53-0013027313-0	6-27-971-26-3330-0620-000-008600		837.90
0100105451	03/04/2026	966548870		2/UTILITIES ACCT 53-0013027313-0	6-10-710-26-2600-0620-000-000000		3,203.77
0100105451	03/04/2026	966548870		2/UTILITIES ACCT 53-0013027313-0	6-19-971-00-2600-0410-000-003897		394.31
						Total Check: 0100105451	\$4,928.88
0100105514	03/25/2026	967218105		2/UTILITIES ACCT 53-2359658-5	6-10-710-26-2600-0620-000-000000		14,953.16
						Total Check: 0100105514	\$14,953.16
						Total Vendor: 3732	\$19,882.04
						Grand Total:	\$1,309,474.07

Vendor Detail

Lake County School District R1

Batch Year: 26

Batch Range: 000001 - 009999

Check Date Range: 03/01/2026 - 03/31/2026

FMVEN10A

(build 26.3.5.1)

Selection Criteria

Batch Year	26
Begin Batch	000001
End Batch	009999
Begin Check Date	03/01/2026
End Check Date	03/31/2026
Vendors	All - All Vendors
Role ID	ADMIN

Cash Flow Financial Report
FY 2025-2026

		Beginning Balance	Activity	Deposits	State Loan Deposits	Ending Balance	
Lake County School District							
Operating Account	July	\$ 2,956,837.24	\$ 1,476,565.75	\$ 298,783.69	\$ -	\$ 1,779,055.18	
	August	\$ 1,779,055.18	\$ 1,682,783.77	\$ 782,113.48		\$ 878,384.89	
	September	\$ 878,384.89	\$ 1,838,999.89	\$ 1,645,637.87		\$ 685,022.87	
	October	\$ 685,022.87	\$ 1,555,253.08	\$ 1,735,410.63		\$ 865,180.42	
	November	\$ 865,180.42	\$ 1,498,215.61	\$ 1,148,621.02		\$ 515,585.83	
	December	\$ 515,585.83	\$ 1,667,576.90	\$ 752,277.76	\$ 826,108.00	\$ 426,394.69	\$ 1,578,385.76
	January	\$ 426,394.69	\$ 1,544,848.98	\$ 821,575.98	\$ 759,123.00	\$ 462,244.69	\$ 1,580,698.98
	February	\$ 462,244.69	\$ 1,629,686.61	\$ 876,967.95	\$ 876,061.00	\$ 585,587.03	\$ 1,753,028.95
	March	\$ 585,587.03	\$ 3,868,353.68	\$ 3,010,317.19	\$ 1,239,190.00	\$ 966,740.54	\$ 4,249,507.19
	April					\$ -	
	May					\$ -	
	June					\$ -	
Colotrust Account	July	\$ 2,357,158.38	\$ -	\$ 189,564.43		\$ 2,546,722.81	
	August	\$ 2,546,722.81	\$ 250,000.00	\$ 461,271.81		\$ 2,757,994.62	
	September	\$ 2,757,994.62	\$ 1,300,000.00	\$ 337,138.46		\$ 1,795,133.08	
	October	\$ 1,795,133.08	\$ 775,000.00	\$ 207,442.24		\$ 1,227,575.32	
	November	\$ 1,227,575.32	\$ 800,000.00	\$ 361,482.08		\$ 789,057.40	
	December	\$ 789,057.40	\$ 320,000.00	\$ 338,876.15		\$ 807,933.55	
	January	\$ 807,933.55	\$ 500,000.00	\$ 520,336.75		\$ 828,270.30	
	February	\$ 828,270.30	\$ 300,000.00	\$ 347,087.62		\$ 875,357.92	
	March	\$ 875,357.92	\$ -	\$ 238,576.33		\$ 1,113,934.25	
	April					\$ -	
	May					\$ -	
	June					\$ -	
Payroll Account	July	\$ 11,553.14	\$ 512,026.37	\$ 506,000.00		\$ 5,526.77	
	August	\$ 5,526.77	\$ 571,027.94	\$ 576,165.56		\$ 10,664.39	
	September	\$ 10,664.39	\$ 895,395.41	\$ 896,009.00		\$ 11,277.98	
	October	\$ 11,277.98	\$ 633,050.19	\$ 640,000.00		\$ 18,227.79	
	November	\$ 18,227.79	\$ 619,281.31	\$ 611,000.00		\$ 9,946.48	
	December	\$ 9,946.48	\$ 633,842.39	\$ 634,000.00		\$ 10,104.09	
	January	\$ 10,104.09	\$ 598,687.94	\$ 599,000.00		\$ 10,416.15	
	February	\$ 10,416.15	\$ 645,664.08	\$ 646,000.00		\$ 10,752.07	
	March	\$ 10,752.07	\$ 603,995.05	\$ 604,000.00		\$ 10,757.02	
	April					\$ -	
	May					\$ -	
	June					\$ -	



LCSD Financial Update May 2026

Monthly Highlights

- Tuition increase communications were rolled out with no significant pushback from families.
- Executive Director coaching and operational support with Stacy Petty through the Rocky Mountain Early Childhood Council continues to be actively utilized and is already helping strengthen operational systems and administrative processes.
- Bright Start implemented a new family supply request feature through the Brightwheel app. Parent participation exceeded expectations and helped reduce supply costs while increasing family engagement.
- Staff successfully completed Early Childhood Education coursework, supporting continued professional development and licensing quality goals.

Operations & Financial Sustainability

Financial Runway

Month	Cash on Hand	Program Income	Grant/ Donation Income	Monthly Revenue	Monthly Expenses	FMV Rent Estimate	Adjusted Expenses
8/1/2025	\$ 100,077.00	\$ 20,886.90	\$ 2,955.63	\$ 23,842.53	\$ 54,602.26	\$ 7,500.00	\$ 62,102.26
9/1/2025	\$ 104,596.43	\$ 24,587.57	\$ 14,400.00	\$ 38,987.57	\$ 34,872.39	\$ 7,500.00	\$ 42,372.39
10/1/2025	\$ 136,777.39	\$ 41,239.99	\$ 25,300.00	\$ 66,539.99	\$ 34,254.35	\$ 7,500.00	\$ 41,754.35
11/1/2025	\$ 128,579.68	\$ 17,461.32	\$ 6,480.95	\$ 23,942.27	\$ 35,184.00	\$ 7,500.00	\$ 42,684.00
12/1/2025	\$ 143,637.39	\$ 26,858.33	\$ 23,209.50	\$ 50,067.83	\$ 37,307.20	\$ 7,500.00	\$ 44,807.20
1/1/2026	\$ 134,566.84	\$ 27,222.69	\$ 20,000.00	\$ 47,222.69	\$ 56,780.75	\$ 7,500.00	\$ 64,280.75
2/1/2026	\$ 134,239.18	\$ 29,549.99	\$ 812.00	\$ 30,361.99	\$ 42,428.32	\$ 7,500.00	\$ 49,928.32
3/1/2026	\$ 131,344.57	\$ 35,268.47	\$ 962.00	\$ 36,230.47	\$ 45,479.80	\$ 7,500.00	\$ 52,979.80
4/1/2026	\$ 137,015.14	\$ 33,253.95	\$ 21,561.70	\$ 54,815.65	\$ 41,584.52	\$ 7,500.00	\$ 49,084.52

Net Operating Surplus (Deficit)	Cash Runway (Cash on Hand / Monthly Net Burn)	3-Mo Avg Burn	3 Mo Ave Cash Runway (Cash on Hand / 3 Mo Ave Burn)	6-Mo Avg Burn	6 Mo Ave Cash Runway (Cash on Hand / 6 Mo Ave Burn)
\$ (38,259.73)	2.62	\$ (27,614.46)	3.62		
\$ (3,384.82)	30.90	\$ (21,527.55)	4.86		
\$ 24,785.64	Positive Cash Flow	\$ (5,729.73)	23.87		
\$ (18,741.73)	6.86	\$ 886.36	Positive Cash Flow		
\$ 5,260.63	Positive Cash Flow	\$ 3,768.18	Positive Cash Flow		
\$ (17,058.06)	7.89	\$ (10,179.72)	13.22	\$ (7,899.68)	17.03
\$ (19,566.33)	6.86	\$ (10,454.59)	12.84	\$ (4,784.11)	28.06
\$ (16,749.33)	7.84	\$ (17,791.24)	7.38	\$ (7,011.53)	18.73
\$ 5,731.13	Positive Cash Flow	\$ (10,194.84)	13.44	\$ (10,187.28)	13.45

- Bright Start continues to closely monitor operational performance, staffing alignment, and cash flow management.
- Administrative coaching support with Stacy Petty remains focused on strengthening staffing structures, budgeting processes, reporting systems, and overall operational sustainability.
- The organization continues working toward improving operating margins through enrollment growth, tuition adjustments, and operational efficiencies.
- Enrollment remains strong heading into summer programming.

Tuition & Family Support

- The phased tuition increase plan remains on track for implementation beginning June 2026.
- LCECE scholarship launched, 10 families applied for scholarships and award letters will go out by May 15th.
- Family response to the tuition strategy has been positive overall, with limited concerns raised during rollout, at this point we do not anticipate any families will drop due to this increase.

Grant & Strategic Support

LCECE Grant Income

Bright Start received payment from the LCECE grant, which remains a critical component in supporting family affordability.

Community Support & Engagement

- The Spring Fundraiser showed measurable improvement over the Fall event and demonstrated continued community investment in Bright Start's mission.
- The Brightwheel family supply request initiative created additional opportunities for parent involvement and community contribution.

DOLA Facility Cohort

- Several members of the Bright Start Board and Lake County Childcare Coalition have been participating in the DOLA Facility Cohort sessions through an educational grant awarded this year.
- The cohort has been extremely valuable in supporting Bright Start's long-term facility planning efforts and connecting the organization with Early Childhood Education resources, technical assistance, and statewide expertise.
- The program is facilitated by Epic Impact and has already provided meaningful guidance and support as Bright Start evaluates future facility options and sustainability planning.

Capital & Facility Planning

Overall Facility Planning

Bright Start continues to actively explore multiple pathways toward securing a future permanent home for the center. At this time, no final site has been selected, but several opportunities remain under active evaluation:

1. County Land Opportunities

Lake County recently presented Bright Start with seven potential lot options for consideration. Based on some initial research, our top three sites could require approximately \$500,000 in site preparation costs before construction could even begin. At this time, we also do not know what the County's expectations would be regarding purchase price or partnership structure. Bright Start has submitted a request for a work session with the County Commissioners to discuss these opportunities further, but we have not yet received a response.

2. City-Owned Lot East of the Community Center

The City is currently helping evaluate the feasibility of the lot east of the Community Center. Laurie has hired a surveyor to identify the exact property lines and determine whether the site is large enough to support a childcare facility and the required outdoor space. The surveyor is expected to be on-site the week of May 11.

3. Community Housing Trust formally known as Chaffee Housing Trust Discussions

Bright Start has had early conversations with the CHT regarding potential partnership opportunities. Discussions have included creative approaches to long-term sustainability, including the possibility of helping acquire or preserve Pitts.

4. Private Land & Commercial Opportunities

Bright Start has also connected with a local realtor who is keeping an eye out for potential private land opportunities and commercial spaces that may align with the center's long-term needs.

5. 210 E. 10th Property Evaluation

Bright Start also completed additional due diligence on the potential purchase of the 210 E. 10th property. After further evaluation with a local contractor, the Board has officially determined that the property is not a financially or operationally viable option for a licensed childcare center and will no longer be pursued as part of our facility planning efforts.

6. Modular Building Exploration

Bright Start is also continuing to explore modular construction options as part of the overall site evaluation process. We have received one preliminary bid from a modular company and are currently working with a company in Buena Vista to obtain a second bid.